

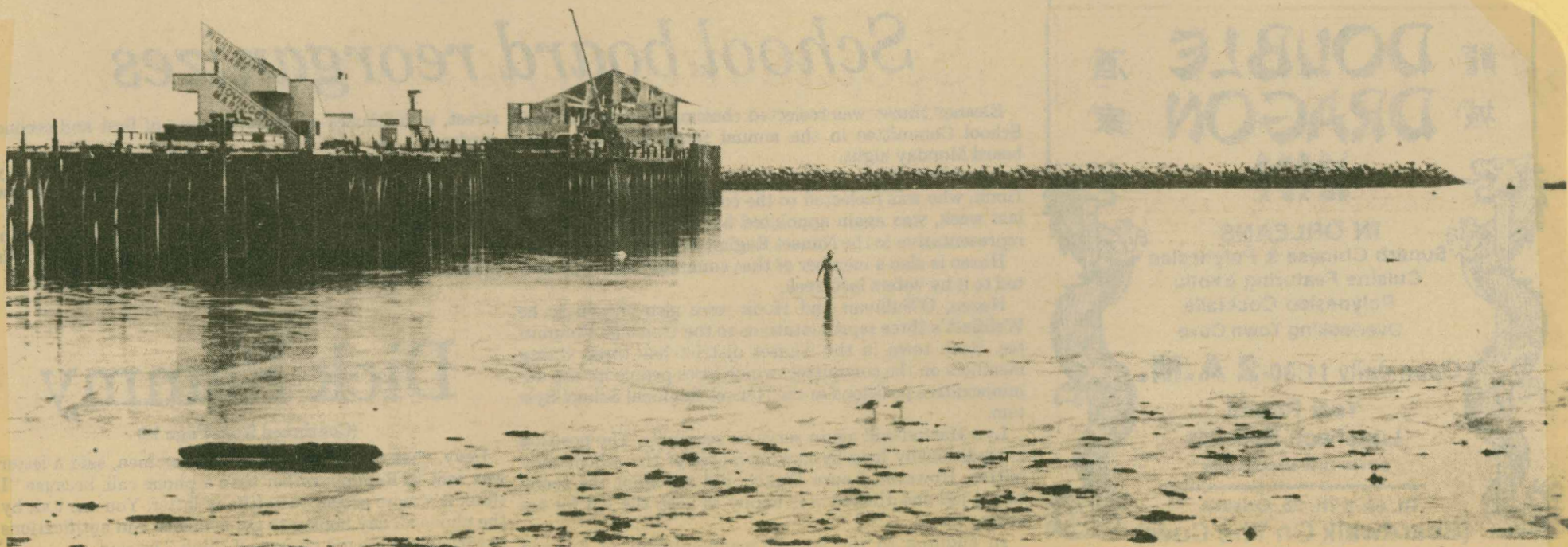


Railroad, or MacMillan Wharf, left, and the now repaired Fisherman's Wharf, right 1980



Fisherman's Wharf facing West, now with the new buildings on it. - 1981

The Advocate, Thursday, May 13, 1982



Early season swimmers

View of new Fisherman's Wharf from the West

Advocate photo by Margaret Ryan