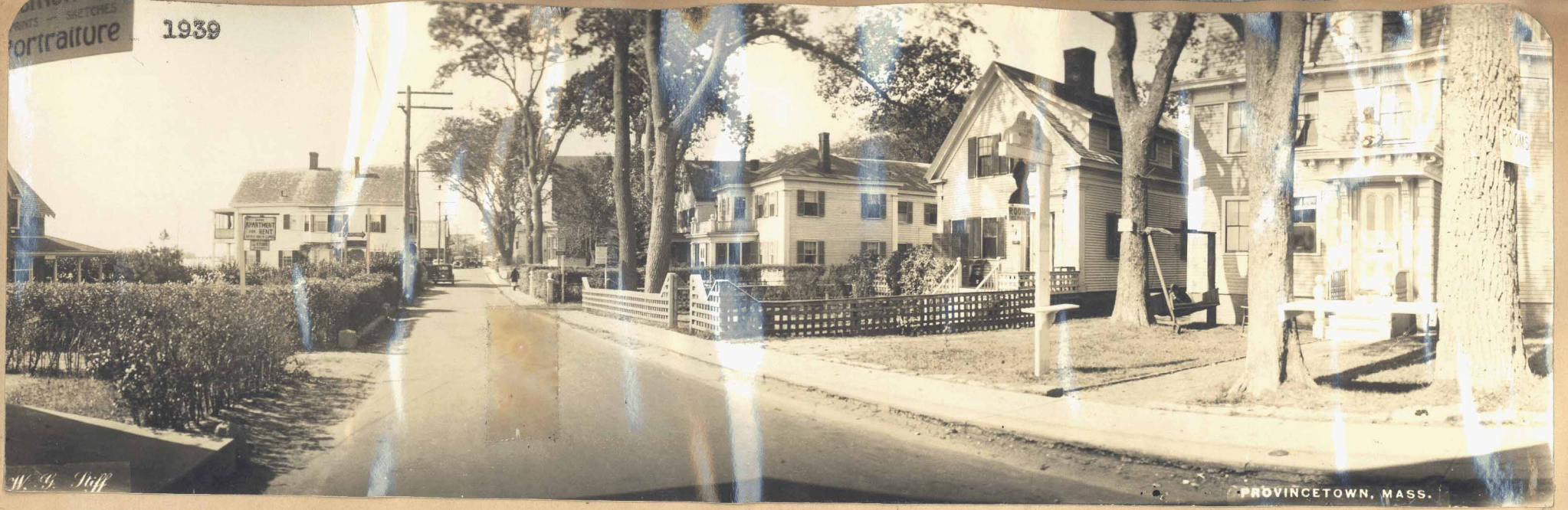


324

PRINTS - SKETCHES  
PORTRAITURE

1939



W. G. Jeff

PROVINCETOWN, MASS.

Big white house on left, Mother's birthplace, now owned by the explorer, Donald MacMillan. His picture is a few pages ahead. Cook Street first street on right. The Figurehead House, right.

New Beacon

July 5, \* 1961

Probably the most unusual use anyone has thought up so far for a golf cart was evident this week, as the knife grinder made his annual appearance in town. Formerly he carried his wheel in a sling arrangement on his back. Now when he's ready to move on he puts his grinding wheel on his golf cart and goes rolling along.

1900



888 - 2 B Commercial St East End, Provincetown, Mass.

1939



The Figurehead House