

"Ye Olde Pilgrim's Hostelrie,"

313 Commercial Street.



Ye original Uncle Sam, ye Olde Boniface, still gives personal attention to y^r wayfarers.

Pilgrim House.

First-Class with good situation, near Depot and Business Centres, offers every convenience and comfort to Tourists, Business Men and Families.

TERMS REASONABLE.

NICKERSON'S MONUMENTAL STUDIO

No. 272 Commercial Street, two doors West of Knowles' Livery Stable.

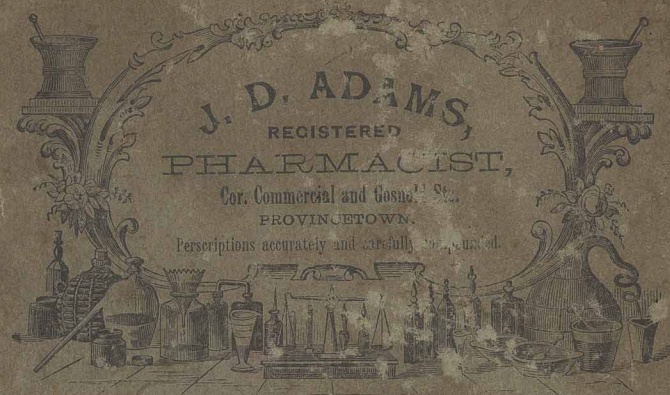


As we do our own work we can easily convince those who give us a call that our promise to furnish work at prices that cannot be duplicated, not merely to catch the unwary.

The best way to convince those who, on seeing the superior work sent out from our place, cry "such nice work could not have been done out of the city," is to let them to come in freely and see it done, for seeing is believing.

GRANITE WORK OF ALL KINDS FURNISHED.

R. NICKERSON, Proprietor.



Always in stock a full line of
PURE DRUGS AND MEDICINES.

Also a choice assortment of
TOILET ARTICLES, SPONGES, TRUSSES, Etc., PATENT MEDICINE of all kinds.

PROVINCETOWN DIRECTORY

A. F. SMALL, MERCHANT * TAILOR.



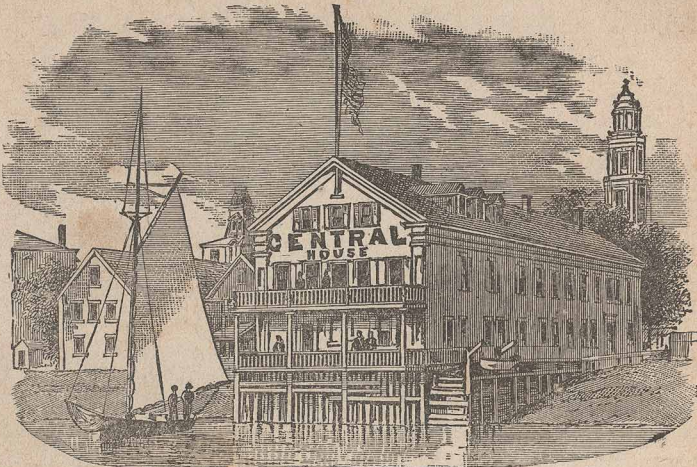
Dealer in Gents' Furnishings, Foreign and Domestic Woolens and Trimmings

of every description.

301 Commercial St., nearly opposite Post Office,

PROVINCETOWN, MASS.

Frank A. Putnam



CENTRAL HOUSE,

234 Commercial Street, - - - Provincetown, Mass.

Is about an equal distance from the Depot and Steamboat Landing. It is the largest, most centrally located, and the only Hotel in Provincetown situated upon the Beach. **J. A. REED, Manager.**

C. B. SNOW,

DEALER IN

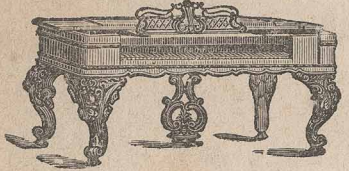
CARPETS, CROCKERY, PAPER HANGINGS AND TABLE CUTLERY.

CABINET ORGANS,

PIANOS and

SEWING MACHINES

For Sale and to Let.



Examine the HELPMATE SEWING MACHINE.
BEST IN THE WORLD.

Salesroom opposite the Universalist Church,
232 Commercial St.,

1st Door West of Central House, PROVINCETOWN.



PROPERTY OF



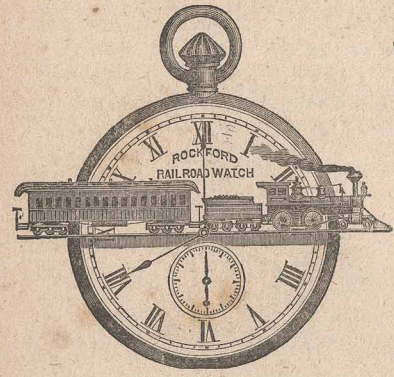
ARTICLE NO. 90
DATE ACQUIRED 10/24/76
SHEET 39
OF File B

Frank Putnam

A. L. PUTNAM & CO.,

DEALERS IN

Watches, Clocks,
Jewelry,
Fancy Goods,
Nautical Instruments,
Musical Instruments,
Sewing Machines,
Books, Stationery,
Patent Medicines,
Perfumes,
Papers and Periodicals.



Watches, Clocks and Jewelry Repaired.

N. B. — We are the sole agents in Provincetown for the celebrated ROCKFORD WATCH, which we recommend as the best watch in the market for the money.

Masonic Building, Provincetown, Mass.

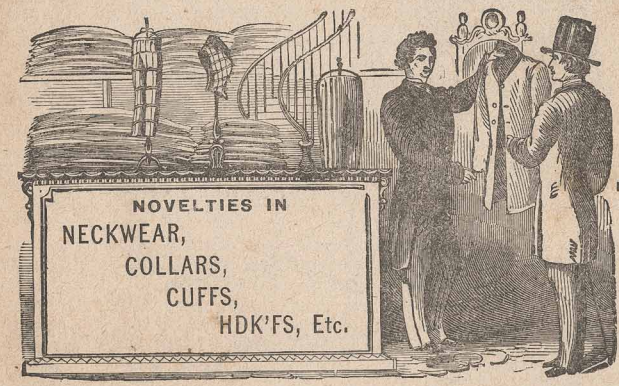
A. LOUIS PUTNAM.

AUG. MITCHELL.

AMASA SMITH,

DEALER IN

Ready-Made Clothing, Gents' Furnishings,



Hats, Caps,
Underwear,
Trunks,
Traveling Bags,
Umbrellas,
Gloves,
Hosiery, &c.

Opposite the Bank, and near the Post Office.

J. L. RICH,
196 COMMERCIAL STREET,



Has the largest and most varied stock of

MEN'S, WOMEN'S AND CHILDRENS'

Fine, Medium & Heavy Boots, Shoes & Rubbers

In Provincetown, to which he invites the attention of close buyers.

Also a full line of all grades of

READY-MADE CLOTHING,



Gents' Furnishings, Hats, Caps, Trunks, Bags, Etc.

*To The Heritage Museum
From Neil & Garry Dickerson*
THE FIRST

RESIDENT DIRECTORY

OF

PROVINCETOWN, MASS.

CONTAINING ALSO A COMPLETE BUSINESS DIRECTORY, CHURCHES,
SCHOOLS, SOCIETIES, TOWN OFFICERS, ETC.

Compiled and arranged by J. H. HOGAN.

W. F. RICHARDSON & CO.

SOUTH FRAMINGHAM, MASS.

Lakeview Press:

J. C. CLARK PRINTING COMPANY, SOUTH FRAMINGHAM, MASS.

1886.

PROPER
OF



E. J. KILBURN,

DEALER IN

Foreign and Domestic Fruits,**PURE CONFECTIONERY,****Choice Cigars and Tobacco,****STATIONERY, FANCY GOODS, SMALL WARES,
JEWELRY, PERIODICALS, &c.**

Agent for the Boston Daily Herald.

187 Commercial Street, opposite Steamboat Wharf.

CLOTHING,

Hats, Caps, Gents' Furnishing Goods and Seaman's Outfits.

**J. M. BURCH, - - 268 Commercial Street.****CONTENTS.**

Abbreviations used,	45
Business Directory,	91
Census of Massachusetts,	106
Churches,	31
Fire Department,	43
Index to Advertisers,	109
Post Office and Mails,	44
Provincetown, the town of,	21
Publisher's Card,	44
Resident Directory,	45
Schools and Teachers,	41
Societies,	37
Street Directory,	9
Town Officers,	42

WM. S. BIRGE, M. D.,**PHYSICIAN AND SURGEON.**

OFFICE AND RESIDENCE, COMMERCIAL ST.

Office Hours: 1 to 2 and 6 to 7, P.M.

Dr. E. N. ATKINS,**DENTIST.**

Practical Experience over 1-4 Century.

OFFICE: 242 COMMERCIAL STREET.

OFFICE HOURS: 8 to 12 A.M.; 1 to 5 P.M.



Miss L. A. PAINE,
Fashionable Milliner,

AND DEALER IN MILLINERY GOODS.

Fresh, seasonable goods, artistic work, reasonable prices.

256 COMMERCIAL STREET.

M. & J. MATHESON,

DEALERS IN

DRY & FANCY GOODS,

Feltings, Fancy Silks, Flosses, Chenille, Etc.

Head of Steamboat Wharf, - - Provincetown, Mass.

Mrs. L. J. DYER,

OPPOSITE NATIONAL BANK,

272 Commercial Street, . . . Provincetown, Mass.

DINING ROOMS. Hot Meals at all hours. Board by the day, week or month, at reasonable rates.

BAKER. Fresh Bread, Cake, Doughnuts, Pies, etc., always in stock. Also Fine Cigars and Tobacco, Pure Confectionery, etc.



L. J. DYER,

97 Commercial Street,

GROCER.

Our stock is complete, of best quality, and furnished at lowest prices.

MRS. J. M. CHAMBERLAIN,
FASHIONABLE MILLINERY ROOMS,

No. 228 Commercial Street,

Where you will find Fresh Goods, Reliable Styles, Nice Work and Reasonable Prices.

STREETS, AVENUES, ETC.

Alden, from Bradford near Winslow to the Cemetery
 Atkins, from Commercial opp. Engine No. 1 to Bradford
 Atwood, from 47 Commercial to Tremont
 Bangs, from 417 Commercial to Bradford
 Bradford, from East to West End parallel to Commercial
 Carver, from 198 Commercial to 31 Court
 Center, from 325 Commercial to R. R.
 Central, from Commercial to Bradford
 Commercial, from Truro line to "West End"
 Conant, from 139 Commercial across Bradford
 Cook, 435 Commercial to Bradford
 Cornell, from 341 Commercial to R. R.
 Cottage, from 79 Commercial to Creek Road
 Court, from 187 Commercial to Old Cemetery
 Creek Road, from 35 Franklin
 Cross, from 153 Commercial to Bradford
 Cudworth, from Prince to Court
 Dyer, from 375 Commercial to Bradford
 Elm, from 471 Commercial to Bradford
 Franklin, from 105 Commercial to Creek Road
 Freeman, from Commercial to the depot
 Freeman Ave., off 118 Commercial
 Gosnold, from Commercial to Bradford
 Grove, from 499 Commercial across Bradford

Howland, from Commercial to Bradford by E. School
 John, from 525 Commercial to 534 Bradford
 Johnson, from 339 Commercial to the R. R.
 Kilburn, from 363 Commercial to Bradford
 Kiley, off 403 Commercial
 Law, from 499 Commercial to Bradford
 Lovett, from 399 Commercial across Bradford
 Masonic Place, off 223 Commercial
 Mechanic, from 83 Commercial to Creek Road
 Montello, from 137 Commercial across Bradford
 Nickerson, from 499 Commercial across Bradford
 Nickerson Place, off 175 Commercial
 Pearl, from Commercial to the R. R.
 Pleasant, from 133 Commercial across Bradford
 Prince, from Bradford by Catholic Church
 School, off 5 Tremont
 Soper, from 65 Commercial to Tremont
 Sparrow, from 13 Commercial
 Standish, from the depot to Alden near the Cemetery
 Tremont, from 105 Commercial to West End
 Turner, from 25 Pearl to Bradford
 Vine, from 57 Commercial to Tremont
 Webster Place, off Bradford near *Advocate* Office
 Winslow, from Bradford to Bradford across Town Hall
 Hill
 Winthrop, from Commercial to the Old Cemetery
 Young's Court, off 381 Commercial

A. GAYLAND, BUILDING MOVER AND WHARF BUILDER.

Estimates promptly furnished on Contracts for Moving all kinds of Buildings, or for the Construction of Wharfs of any description.

ALSO MANUFACTURER OF

Lumber for Carriage and Boatbuilders' use.

300 COMMERCIAL STREET, P. O. BOX 183, PROVINCETOWN, MASS.

F. C. MILLER,

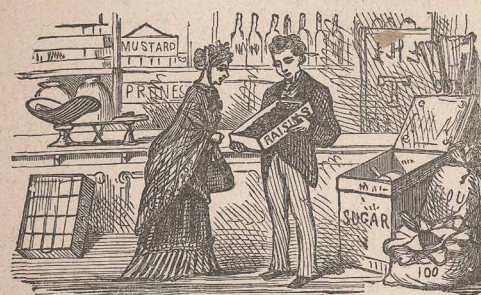
DEALER IN

Choice Family

GROCERIES

All the popular brands of

FLOUR



Pure Sugars, Teas, Coffee and Spices; Butter, Cheese, Lard,
 Canned Goods, Cigars and Tobacco,

ALSO

Choice Meats, Poultry, Tripe, Ham, Sausages, Fresh Vegetables and Fruits.

76 COMMERCIAL ST., PROVINCETOWN, MASS.

ISAIAH TURNER,

DEALER IN

Ladies', Men's and Childrens'

BOOTS, SHOES AND RUBBERS.



— FINE REPAIRING A SPECIALTY. —

Full Stock. Lowest Prices.

413 COMMERCIAL ST., PROVINCETOWN.

P. R. HOWES,

DEALER IN

Small Wares & Fancy Goods,

GLASS, TIN AND CROCKERY WARE, TOYS, &c.

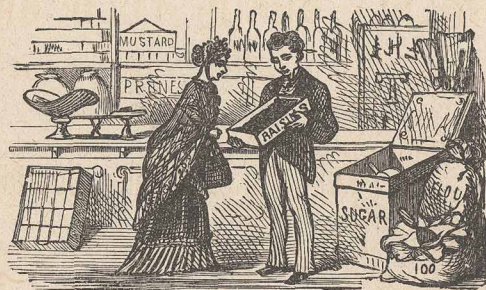
Cloaks and Dry Goods of every description sold from sample.

254 COMMERCIAL ST., PROVINCETOWN.

IRA K. SMALL,

DEALER IN

=GROCERIES,=



FRUITS, PROVISIONS and COMMISSION GOODS.

201 COMMERCIAL STREET,

PROVINCETOWN, MASS.

J. PAINE, JR.,

LUMBER DEALER AND CONTRACTOR.

Long and Short Lumber, Doors, Windows, Blinds,

Mouldings, Window Frames, Etc.

Fish Box Shooks and Manufacture of Boxes, a Specialty.

Corner of Commercial and Franklin Streets.

SAMUEL KNOWLES,

DEALER IN

FLOUR, MEAL, GRAIN, FEED AND HAY.

I have facilities that enable me to offer BEST GOODS at LOWEST PRICES.

Also Proprietor



Knowles' Livery and Boarding Stables.

My Carriages meet all Trains and Steamers.

PARTIES taken to any point at short notice, and at reasonable rates. Careful Drivers.

Also Agent for New York & Boston Despatch Express Co.

Old Stand, 276 Commercial Street, Provincetown, Mass.

S. G. COOK,

DEALER IN

CHOICE FAMILY GROCERIES,

TEA, COFFEE
and SPICES,
CANNED FRUITS
and VEGETABLES,
CONFECTIONERY,
TOBACCO,
CIGARS, etc.

All the Most Popular Brands of Flour.

FRESH AND SALT MEATS AND PROVISIONS.

424 Commercial St., Provincetown.

H. & S. COOK & CO.,

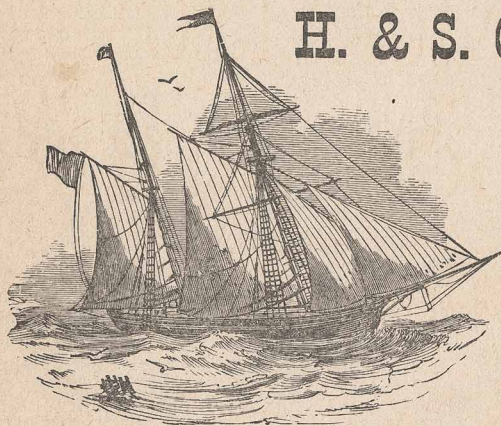
Owners & Outfitters

OF

Fishing Vessels,

AND WHOLESALE DEALERS IN

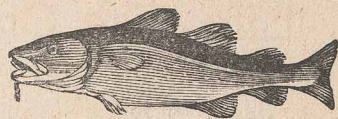
Dry, Pickled, Boneless and Pre-
pared Codfish, and Fish Oils.



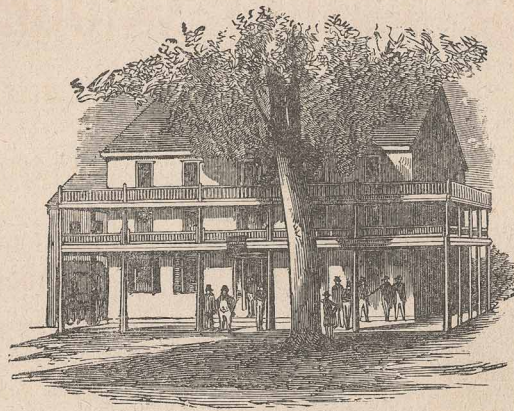
COOK'S WHARF,

438 Commercial Street,

PROVINCETOWN, - - MASS.

**ATLANTIC HOUSE,**

Masonic Place, rear Masonic Hall, **PROVINCETOWN, MASS.**



FRANCIS P. SMITH, Proprietor.

Quiet, Shady Location, Good Rooms, Table d' Hote unsurpassed and moderate charges.

G. H. NICKERSON,**PHOTOGRAPHER,**

FIRST DOOR EAST OF POST OFFICE.

Life Size Crayons a Specialty.

HEADQUARTERS FOR CAPE COD VIEWS.

R. E. MAYO,

DEALER IN

FINE BOOTS, SHOES AND RUBBERS

For Men, Women and Children.

REPAIRING A SPECIALTY.

ALSO

TEAMING

AND



JOBGING

EXPRESS.

Furniture Promptly Moved by Experienced Men.

PIANO MOVING A SPECIALTY.

BAGGAGE TRANSFERRED AT SHORT NOTICE.

Our Carriages meet all Trains and Steamers. Parties taken to any point. Prices Reasonable.

141 COMMERCIAL STREET, PROVINCETOWN.

J. WHITCOMB'S**Undertaker's Warerooms**

ARE AT

318 COMMERCIAL STREET.

Special attention given to the laying out of bodies. All bodies preserved with the embalming fluid which is preferable to the use of ice.

Special arrangements for Flowers and Floral Decorations for Funerals, Weddings, Parties, etc.

JOSEPH WHITCOMB.

R. W. SWIFT,**Conveyancer, Notary Public AND Justice of the Peace.**

Titles to Property carefully examined; Deeds, Wills, etc., prepared.
Probate Business carefully and promptly attended to.

AGENTS FOR THE

Home Fire Insurance Co., N. Y.

Lancashire Fire Insurance Co.

Springfield Fire and Marine Ins. Co.

Citizens' Mutual Ins. Co., Boston.

PROVINCETOWN, MASS.

FIRST NATIONAL BANK,

275 COMMERCIAL STREET.

Organized as a State Bank in 1854. Re-organized as a National Bank in 1865.

CAPITAL STOCK, \$200,000. SURPLUS PROFITS, \$66,000.

Officers Hours: from 9 to 12 A. M., and 1 to 3 P. M.

STEPHEN COOK, Prest. MOSES N. GIFFORD, Cashier. REUBEN W. SWIFT, Asst. Cashier.

DIRECTORS:

Stephen Cook, Henry Cook, Joseph P. Johnson, William A. Atkins, Isaiah Gifford, Joshua Paine, Nathan D. Freeman, N. P. Holmes, and James Swett.

INVEST IN THE SECURITIES OF**The Lombard Investment Co.**

Capital Stock, \$850,000. Surplus, \$175,000.

This Company loans money on improved Farms in the West on First Mortgages. These mortgages pay six per cent. interest, payable in Boston, and are guaranteed by the Lombard Investment Company.

Having acted as agent for ten years for the Lombards I can recommend their Loans as among the safest securities offered in the market.

MOSES N. GIFFORD.

W. M. SMITH, PHOTOGRAPHER.

Copying and Enlarging Pictures from Old Tintypes, etc.,

TO ANY DESIRED SIZE.

Crayon Work, and all kinds of large work, a specialty.

VIEWS OF PROVINCETOWN AND VICINITY MAY BE FOUND AT OUR
STUDIO, IN GREAT VARIETY.

NEARLY OPPOSITE NATIONAL BANK.

A. G. SMALL,

DEALER IN

FLOUR, MEAL, CHOICE FAMILY GROCERIES,

Teas,

Coffees

and Spices,

Canned Meats,

Fruits and

Vegetables,

Tobacco,



Cigars,

Confectionery,

Flavoring Extracts,

Patent Medicines,

Stationery,

Toilet Soaps,

Perfumery, etc.

CHOICE MEATS, FRESH VEGETABLES and FRUITS.

BEST QUALITY—LOWEST PRICES.

66 Commercial Street—West End.

DR. A. H. NEWTON & SONS' PHARMACY,

227 COMMERCIAL ST., PROVINCETOWN.

W. M. NEWTON, Registered Pharmacist.

A. H. NEWTON, M. D.

F. L. NEWTON, M. D.

PHYSICIANS AND SURGEONS.

Prof. ADIN H. NEWTON, Jr., and Miss NETTIE NEWTON,

TEACHERS OF

VOCAL AND INSTRUMENTAL MUSIC,

227 Commercial Street, Provincetown.

CROCKER'S

Dry and Fancy Goods Store,

156 COMMERCIAL STREET, PROVINCETOWN.

Constantly on Hand a choice selection of

DRY AND FANCY GOODS AND LADIES' FURNISHINGS.

MEDICINES, DRUGS, FLAVORING EXTRACTS AND PERFUMERY.

Agent for Lewando's French Dye House, goods received Mondays and Thursdays.
No Express charges.

MRS. R. N. CROCKER,

AGENT FOR DOMESTIC PAPER FASHIONS

In Stock and for Sale. Latest and most Approved Styles. Call for Catalogues and Styles.

STAMPING OF ALL KINDS NEATLY EXECUTED.

We Solicit your Patronage.

H. P. HUGHES,

Staple and Fancy Dry Goods.

LADIES' AND CHILDREN'S

HOSIERY AND UNDERWEAR.

Gents' Furnishing Goods.

Foster, Paul & Co.'s Lace Kid Gloves,

McCall Glove Fitting Patterns,

Cashmere and Woolen Shawls.

Agent for the

FALL RIVER LAUNDRY.

Lowest Prices, First Class Goods.

MASONIC BUILDING, COMMERCIAL ST.

PROVINCETOWN, MASS.

PROVINCETOWN,

The largest town of Barnstable County, situated at the extremity of Cape Cod — one can easily imagine it lovingly sheltered in the open palm of this “bare and bended arm of Massachusetts” — is interesting to every American; not so much for its insular position which gives it all the advantages of an island without its isolation, as for its many reminders of “ye olden time” to be met with among its people, buildings and wrecks; but rather because of its close connection with our earliest history; with the planting of that germ — a mustard seed it indeed appeared — which has grown to be so great among the giants of earth.

There can be no doubt that these shores were visited by Europeans long before the time of Columbus. May we not imagine, from the many pre-historic, yea pre-traditional, architectural and engineering remains found, that this world which is called the new, is, in reality, the old. But this cannot interest us as does the fortune of that small band of Pilgrims, our fathers, strong, true men inspired by a firm belief in the direct, active and ceaseless interest of God in their daily lives, to exchange home, friends, the comforts of a well ordered and established society, for the discomforts of an inhospitable wilderness. One cannot do better to show the connection of this place with their advent here than to quote from Sylvester's “Provincetown.”

“It was at Provincetown that the Pilgrims first landed, Nov. 11, 1620. Here the storm-tossed, weather-worn Mayflower, with her precious freight found her first safe anchorage. Here those sturdy saints first trod New England soil — here they kept their first Sabbath — here those devoted women, so long confined in a crowded vessel, first refreshed themselves, and began the performance of housewifely duties — here those men, who believed in work, did their first work in the new world, as they cut the wood and sawed the timbers for their new shallop — here the re-

doubtable Miles Standish assumed command of the first armed band of citizen soldiery—here they caught their first glimpse of the Indians—here the first child was born—here the disease that was so soon to make sad havoc among them, began its fatal work; and here Mrs. Bradford met her untimely end—here the colony itself was formed into a body politic and here the first election was held. Nay more, on that memorable 11th day of November, as that compact—the first written constitution of which history bears record—was signed, the foundations of our liberties were laid. Then and there, in that little cabin, the idea of a ‘government of the people, by the people, for the people’ first sprang into being and began its beneficent work.” May the God they worshiped enable us to know always the difference between liberty and license.

The first permanent settlement on this site was made about 1680. The first recorded social event is said to be the birth of Ephraim Doane, Apr. 1st, 1696. The settlement was made a district in 1714 and incorporated as a town June 14th, 1727. It flourished for a time, being exempt from taxes and military duty, then its pulse became weak and uncertain, to be followed by improvement and relapse until was reached the healthy manhood of today. This can be best shown by the following table of population. Whatever the number of inhabitants when incorporated in 1727, it had dwindled in 1748 to 2 or 3 families. In 1755 there were 10 or 15 families. In 1764 it was not mentioned in the general census. In 1776 there were 36 families, about 205 people. In 1800 the population was 812. In 1855 it had increased to 3096. In 1880 to 4341, and in 1885 to 4480, showing a steady and at times a rapid increase. The present population is made up of three, I had almost said distinct elements. The descendants of the early settlers; people from the Western Islands who are numerous; and many from Eastern Nova Scotia, who are of Scottish descent. These peoples are all engaged in the hardy business of “going down to the sea in ships” and in the trade resulting. They are generous in thought, hospitable and large hearted. How could they be otherwise, associated so closely with the sea? That boundless

sea which mocks so at the petty littlenesses that cumber human souls.

There could be given many interesting extracts from the scanty records preserved. These records, as in all old New England towns, show that the first settlers were fairly educated men; that the standard of education rapidly fell to a very low ebb, to be followed, as prosperity was attained, by our present proud position.

1750—An ordinance was passed regulating the picking of berries and the attendance of dogs at church.

1774—Feb. 20. The first church edifice was dedicated.

1777—There is said to have been no wharf. The house of Nathan Atwood occupied the present site of the National Bank, besides this, there was no house from the dwelling of the late Jesse Cook to Truro.

1798—The town resolved to petition the general government for a Post to come down the Cape.

1841—Three schoolhouses built at a cost of \$10,000.

1847—Universalist church erected.

1853—Town Hall built on the hill at a cost of \$14,300.

1873—O. C. R. R. opened to Boston, 120 miles.

1874—Roman Catholic church consecrated Oct. 12.

1877—Town Hall burned.

1886—The present beautiful Town Hall, built and dedicated with much pomp and rejoicing Aug. 25th. May the future which it anticipates be fully realized by its enterprising builders.

These dates of interest might be cited almost indefinitely, but the reader is referred to Jenning’s “Chequocket” and Freeman’s history of Cape Cod, to both of which the writer is indebted.

To be brief, the Provincetown of today is thrifty, prosperous, enterprising and with situation and surroundings that are unique. That it is a pleasant summer resort for those who wish for perfect rest from business cares or the restraints of fashionable society, is proved by the increasing number who spend the summer here and whose universal answer is “I am pleased.”

J. H. H.

MRS. M. J. ELLIS,

DEALER IN

GROCERIES, PURE TEAS, COFFEE & SPICES,

Provisions, Dry and Fancy Goods, Patent Medicines,

Cigars and Tobacco, Crockery Ware, Etc.

511 Commercial St., Provincetown.

S. BANGS,

PROPRIETOR

BANGS' WEIR

AND DEALER IN



Fresh Mackerel, Shad, Cod, Herring, Flounders, Salmon, Etc.

Retail dealers can save money by dealing with **FIRST HANDS.**

PLEASE WRITE US. P. O. BOX 312.

424 COMMERCIAL ST., PROVINCETOWN, MASS.

W. H. HERBOLT,

SHIPSMITH, HORSESHOER AND BLACKSMITH.

All kinds of Forging, Jobbing and Repairing promptly done.

ANCHOR REPAIRING A SPECIALTY.

ALSO

Steam Fitting, Piping, Pumps, &c. Wells driven and repaired at short notice.

Head Steamboat Wharf, - Provincetown.

J. T. SUMNER,

DEALER IN

FOREIGN AND DOMESTIC FRUITS,

FINE CIGARS AND TOBACCO, PURE CONFECTIONERY, ETC.

BOATS TO LET.

COMMERCIAL ST., TWO DOORS EAST OF P. O. PROVINCETOWN.

W. C. HEALEY,

DEALER IN

Watches, Clocks, Jewelry, Silver Ware, Eye Glasses, &c.

Special Attention Given to Repairing.

Adams' Block, 200 Commercial Street, - - - Provincetown, Mass.

LEWIS NICKERSON,

FIRE INSURANCE AGENT,

Provincetown, Mass.

Dwellings, Stores, Furniture, Merchandise, Etc.,

INSURED IN STOCK OR MUTUAL COMPANIES ON THE MOST FAVORABLE TERMS.

S. D. FISH,

RESTAURANT

Opposite Town Hall.

FIRST CLASS IN EVERY RESPECT.

ICE CREAM and PASTRY.

OYSTERS IN EVERY FORM.

CIGARS and CONFECTIONERY.

GIFFORD'S SUMMER HOTEL,

Carver, corner Bradford Street,

PROVINCETOWN, MASS.

JAMES GIFFORD, - - Proprietor.

This House overlooks Provincetown Harbor and Barnstable Bay, and has a Bath House attached to the premises.

MRS. J. S. HATCH,

DEALER IN

Dry and Fancy Goods,

402 COMMERCIAL ST., PROVINCETOWN.

J. HIGGINS,
ATTORNEY,

ORLEANS, - - - MASS.

Harwich, Monday. Provincetown, Thursday P. M. and Friday A. M. of each week. Office near Town Hall, Provincetown.

PROBATE BUSINESS A SPECIALTY.

J. D. HILLIARD,

Hilliard's Wharf,

312 COMMERCIAL STREET, PROVINCETOWN,

WHOLESALE DEALER IN

Dry, Pickled and Boneless Codfish, and Sperm and Cod Oil,

ALSO
GENERAL STORE, COAL, WOOD, PAINTS AND OILS.

M. PERRY,

CUSTOM SHOEMAKER,

Fine and Heavy Boots and Shoes for Men, Women and Children made to measure from best of stock.

REPAIRING A SPECIALTY.

ALSO DEALER IN

FRUIT, CONFECTIONERY, CIGARS, TOBACCO, TONICS, &c.

300 Commercial St., near P. O., Provincetown.

MISS BERTHA DYER,

DEALER IN

FANCY GOODS, SMALL WARES,

Embroidery Materials, Ribbons, Macrame Twine, Toilet Soaps, Stationery, etc.

STAMPING DONE TO ORDER.

374 COMMERCIAL STREET, PROVINCETOWN.

—BAKERY.—

A good assortment of

FRESH PIES, CAKES & BREAD,

Constantly on hand.

I also have for sale the famous "COMING FLOUR," which contains more gluten than any other flour in the market.

PAPER BAGS, WRAPPING PAPER AND TWINE

Sold at wholesale at my shop.

J. T. SMALL.

DAVID SMITH,

GROCER,

Commission Merchant.

WHOLESALE AND RETAIL DEALER IN

FRUIT, FLOUR, CORN, COARSE AND FINE MEAL,

Oats, Fine Feed, Shorts, Wheat, Screenings, Fine Middlings, Cracked Corn, Hay, &c.

ALSO DEALER IN

FRESH, DRY and PICKLED FISH.

136 COMMERCIAL ST., PROVINCETOWN.

ESTABLISHED 1869.

THE PROVINCETOWN ADVOCATE,

A Four-page, Thirty-two Column Weekly, devoted to the interests of Provincetown, Truro and Wellfleet. It gives all the Local News, Short Stories, and the General News of the Day.

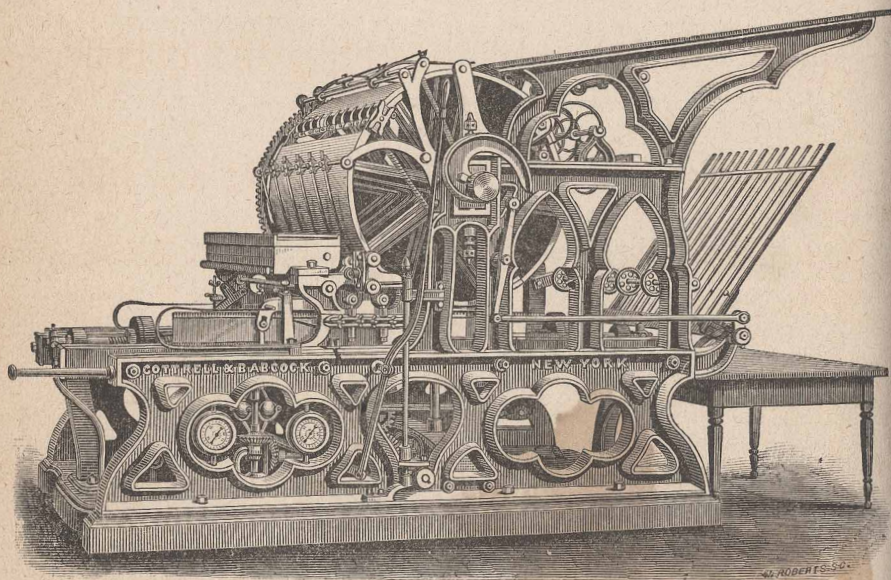
Printed every Thursday, at Marine Hall Building,

BY

N. T. FREEMAN, - - - Editor and Proprietor.

The Only Local Paper in Town.

TERMS: - - - \$2.00 PER YEAR, IN ADVANCE.



A FINELY EQUIPPED

JOB PRINTING OFFICE

Attached, capable of doing work of all descriptions.

GOOD WORKMEN.

FAST PRESSES.

LOW PRICES.

JAMES H. HOPKINS, Counselloer at Law.

Office, Gifford's Block,

PROVINCETOWN, MASS.

"THE OLD CURIOSITY SHOP,"

344 Commercial Street, near foot of Pearl Street.

For sale a large variety of

Shells, Whale's Teeth, Coral, Whalebone,

AND MANY MARINE CURIOSITIES.

Old Books and other Old Relics bought and sold.

ALSO DEALER IN

PAPER STOCK, METALS AND SECOND-HAND MATERIALS.

THE ONLY SHOP IN TOWN MAKING A SPECIALTY OF BRIC-A-BRAC.

HEMAN S. COOK, Proprietor and Auctioneer.

J. A. WEST,

DEALER IN

Furniture of Every Description,

Bedding, Window Shades and Fixtures,

Pictures and Frames,

Shelf, Builders' and Cabinetmakers' Hardware,

Clothes Wringers, Bird Cages, etc., etc.

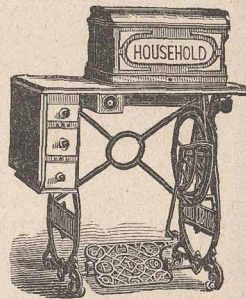
UPHOLSTERING AND REPAIRING.

248 COMMERCIAL STREET.

OBADIAH SNOW & SON,

DEALERS IN

Pianos,
Organs,
Sewing
Machines,



Carpets, Room Papers, Silverplated, Crockery and Glass Ware, Fancy Goods, Lamps, etc.

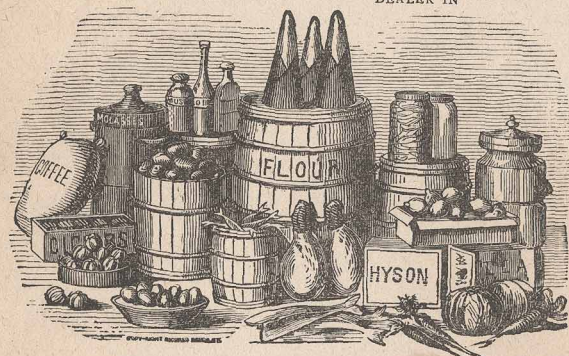
VELVET PICTURE FRAMES A SPECIALTY.

250 COMMERCIAL STREET, PROVINCETOWN, MASS.

Mrs. R. B. DYER,

370 COMMERCIAL STREET,

DEALER IN



FLOUR, MEAL,
GROCERIES,
PROVISIONS,

Patent Medicines,
Cigars and Tobacco,
Confectionery,
Stationery, &c.

C. H. DYER,
SAILMAKER.

Estimates Furnished on New Work. Repairing a Specialty.

S. G. COOK'S WHARF.

CHURCHES.

CENTER M. E. CHURCH.

Commercial, corner of Center street. Church organized in 1795; first pastor, Rev. Geo. Cannon. Second church built in 1817, near present residence of Henry Shortle; Rev. Epaphras Kibby, pastor. Third church erected on present site of skating rink 1837; Rev. Ira M. Bidwell, pastor. The present edifice erected 1860; Rev. E. H. Hatfield, pastor; cost, \$22,000; height, 162 feet.

PRESENT PASTOR. — Rev. W. W. Colburn.

PARISH COMMITTEE. — H. Shortle, chairman; R. W. Swift, clerk and treas.; Jos. Whitcomb, S. S. Swift, E. Lothrop, J. G. Whitcomb.

TRUSTEES. — David Conwell, Henry Shortle and R. W. Swift.

STEWARDS. — David Conwell, Chas. Taylor, John Swift, S. J. Rich, Stephen Mott, E. O. Snow, Reuben S. Snow, L. D. Mayo, H. C. Holmes, E. W. Swift, D. M. McKay, R. W. Swift, recording steward.

CLASS LEADERS. — O. Snow, R. Swift, H. Shortle, Z. Rich and J. Snow.

Organist, E. O. Snow; chorister, O. Snow; sexton, J. H. Smith.

SUNDAY SCHOOL. — Supt., R. W. Swift; asst. supt., J. G. Whitcomb; librarian, E. W. Swift; sec. and treas., H. C. Holmes.

HOURS OF SERVICE. — Sunday: Sunday School, 10.30 A. M.; preaching, 2 P. M.; prayer and praise service, 7 P. M. Prayer meetings, Tuesday evenings. Class meetings, Thursday and Saturday evenings. Sacraments, first Sabbath afternoon of each month.

Membership, 319.

YOUNG PEOPLE'S LITERARY AND SOCIAL UNION. — Pres., Henry Shortle; treas., Lottie B. Frellick; sec., Emma B. Adams. Meets Wednesday evenings in vestry of church.

CENTER M. E. SEWING SOCIETY. — Pres., Mrs. X. S. Rich; vice pres., Mrs. Hannah Morris; sec. and treas., Mrs. Clara L. Dyer.

CENTENARY METHODIST EPISCOPAL CHURCH.

Church established, 1848; present edifice built, 1866.

PASTOR. — Rev. George C. King.

PARISH COMMITTEE. — Nathan Young; H. Merrill Smith, Fred'k A. H. Gifford.

CHURCH TREASURER. — Myrick C. Atwood.

TRUSTEES. — Joshua Paine, Lysander N. Paine, B. O. Gross, B. H. Dyer, Nathan Young, Seth Smith, Marshall L. Adams, A. T. Williams, H. Merrill Smith.

LOCAL ELDER. — Rev. A. H. Newton, M. D.

STEWARDS. — Stephen F. Atwood, Russell Atkins, Jr., B. H. Dyer, B. O. Gross, Seth Smith, Nath. W. Ayres, John Burt, A. H. Newton, M. D., Charles L. Young.

CLASS LEADERS. — Nathan Young, Daniel C. Cobb, H. Merrill Smith.

EXHORTERS. — Wallace Cutter, Daniel C. Cobb.

Chorister, B. O. Gross; asst. chorister, Charles L. Young; pianist, Mrs. Amelia O. Rich; organist, Miss Fannie H. Atwood; cornetist, Samuel H. Ghen.

SUNDAY SCHOOL. — Supt., H. Merrill Smith; 1st asst. supt., Nathan Young; 2d asst. supt., Mrs. Maria L. Crowell; sec. and treas., A. T. Williams; librarians, M. C. Atwood, Warren Fielding, Fred. E. Williams, Frank Smith; home mission work committee, Mrs. Rebecca L. Paine, Mrs. Lizzie O. Harding.

HOURS OF SERVICE. — Sunday: Sunday School, 10.30 A. M.; preaching, 2 P. M.; evening service, 7 P. M. Communion on the first Sunday of every month, following the sermon. Meeting of leaders and stewards, Monday evening preceding the communion. Weekly prayer meeting, Tuesday evening. Weekly class meetings, Thursday and Saturday evenings. Children's meeting, Thursday at 3.30 P. M.

STATISTICS OF THE CHURCH. — Members, 170; probationers, 19; scholars in Sunday School, 200; officers and teachers in Sunday School, 26.

LADIES' AID SOCIETY. — Pres., Mrs. Lizzie O. Harding; vice pres., Mrs. Emily A. Smith; sec., Mrs. Laura T. Gifford; treas., Mrs. Lizzie P. Atwood. Meets in ladies' parlor Wednesdays at 3 P. M.

WOMAN'S FOREIGN MISSIONARY SOCIETY. — Pres., Pastor's wife; vice pres., Mrs. Susan A. Newton; rec. sec. and treas., Mrs. Rebecca S. Paine; cor. sec., Mrs. Lizzie P. Atwood. Meets first Thursday afternoon of each month.

WOMAN'S HOME MISSIONARY SOCIETY. — Pres., Mrs. Laura T. Gifford; vice pres., Mrs. Mary E. Sparrow, Miss Addie S. Mitchell; rec. sec., Miss Rebecca Sparks; cor. sec., Miss Angie E. Sparks; treas., Miss Millie W. Young. Meets first Monday evening of each month.

CHURCH LYCEUM. — Pres., Myrick C. Atwood; vice pres., Miss Clara L. Smith; sec., Mrs. Maria L. Crowell; treas., Mrs. Lizzie O. Harding. Meets alternate Wednesday evenings, October to April.

FIRST CONGREGATIONAL CHURCH.

First church edifice built and dedicated Feb. 20, 1774; present church built and dedicated Sept. 17, 1843; remodeled and rededicated Feb. 20, 1874.

Pastor, Rev. Geo. W. Osgood; deacons, F. Crocker and Wm. Matheson; clerk, Miss Frances S. Crocker; treas., D. A. Matheson; Sunday School supt., Mrs. John Freeman.

PARISH COMMITTEE. — Capt. Wm. Matheson, N. Hopkins, D. F. Lewis and F. Crocker; clerk, Capt. H. Jennings.

HOURS OF SERVICE. — Sunday: Sunday School, 10.30 A. M.; preaching, 2 and 7 P. M. Prayer meetings, Thursday evenings. Lecture by pastor on Sunday School lesson, Tuesday evenings.

FIRST UNIVERSALIST CHURCH.

Organized, 1833; church erected, 1847.

Pastor, Rev. R. T. Sawyer; trustees, Edward K. Kilburn, J. F. Small and Jerome Smith; sec., John F. Snow; treas., J. T. Small; Sunday School supt., M. N. Gifford; librarian, Wm. M. Smith.

Sunday services: Preaching, 10.30 A. M. and 7 P. M. in summer, 2 and 6 P. M. in winter; Sunday School, 12 M. in summer, 10.30 A. M. in winter.

ST. PETER'S CATHOLIC CHURCH.

Prince street. Rev. T. Elliott, pastor.

Sunday services: Mass, 10.15 A. M.; Sunday School, 2 P. M.; vespers, 6.30 P. M.

ST. PETER'S AID SOCIETY. — Joseph Manta, president.

CHAS. S. HOPKINS,

Manufacturer and Wholesale and Retail Dealer in

PURE CANDIES.

FRESH STOCK EVERY DAY.

ALSO A FULL LINE OF

All the Popular Brands of Cigars.

129 Commercial Street, Provincetown.

J. P. BICKERS,**Shipwright and Spar Maker.**

SHIP WORK OF ALL KINDS

Done at Short Notice and at Reasonable Rates.

NEAR E. K. COOK'S WHARF.

J. BROWN,

DEALER IN

FLOUR, BUTTER, CHEESE, EGGS, BEANS,

Poultry,

Pork,

Lard,

Hams,



Sausage

and

Fresh Beef

Of every description.

VESSEL ORDERS PROMPTLY FILLED.

We buy Fresh Halibut at market prices.

A. T. WILLIAMS,

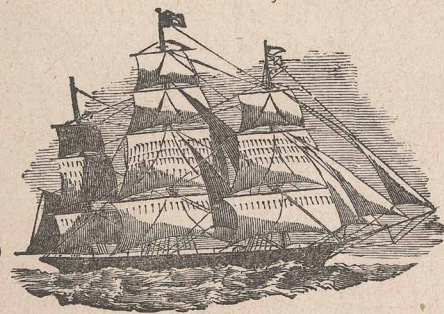
WHOLESALE AND RETAIL DEALER IN

SHIP CHANDLERY, SHIP STORES,

Coal

AND

Wood.



Flour

AND

Groceries.

SEAMEN'S OUTFITS, PAINTS, OILS, ETC.

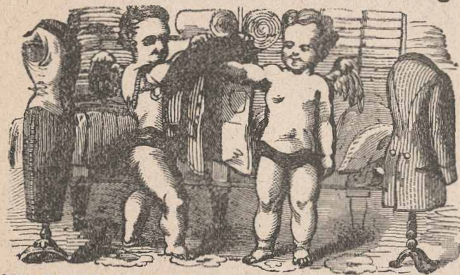
Auctioneer and General Commission Merchant,

UNION WHARF, PROVINCETOWN, MASS.

The Largest Stock, Best Assortment and Fairest Prices

MAY BE FOUND AT

D. A. MATHESON'S
Ready-Made and Custom Clothing, ^{and} Boot and Shoe Emporium



HATS, CAPS and
FURNISHING GOODS,
TRUNKS and VALISES
Cape Ann Oil Clothing and
Seamen's Outfits
A SPECIALTY.

Old Post Office Building, - - 304 Commercial Street, Provincetown, Mass.

BRANCH STORE AT WELFLEET, WHERE FULL LINES OF THE ABOVE WILL BE FOUND.

Agent for the "W. L. Douglas \$3.00 Shoe."

N. C. BROOKS & SON,
LIVERY STABLE,
DEPOT AND PLEASURE CARRIAGES.



Our Barges, "Empress" and "Myrtle," will be in waiting on the arrival of all trains and steamers, to convey passengers to the Hotels and about town.

PASSENGER'S BAGGAGE TRANSPORTED FREE.

Private Parties furnished with Teams for the Highlands, or any point, on reasonable terms. Careful Drivers. Baggage promptly transferred.



Also Jobbing Express, Heavy Teaming and
Furniture Moving.

96 Commercial Street, Provincetown, Mass.

SOCIETIES.

F. & A. M.

KING HIRAM LODGE.



Meets in Masonic Hall every Monday evening; stated meetings, first Monday of each month; yearly meeting, first Monday evening of November. Instituted March 25, 1796, at which time Paul Revere, Grand Master of the State, signed the constitution. John Young was first Grand Master. Present officers: L. H. Baker, *W. M.*; J. A. Small, *S. W.*; A. T. Williams, *F. W.*; A. L. Putnam, *Treas.*; R. W. Swift, *Sec.*; J. P. Johnson, *Chap.*; Joseph Whitcomb, *Mar.*; J. S. Smith, *S. D.*; J. W. Small, *F. D.*; S. C. Smith, *S. S.*; F. P. Cook, *F. S.*; F. L. Newton, *Organist*; J. W. Beatty, *Tyler.*

JOSEPH WARREN R. A. CHAPTER.

Meets first Friday evening of each month; annual meeting, first Friday evening in November. Harvey O. Sparrow, *M. E. H. P.*; Artemas P. Hannum, *Ex. King*; Joseph S. Atwood, *Ex. Scribe*; Joseph P. Johnson, *Treas.*; James A. Small, *Sec.*; Joseph H. Dyer, *Capt. of H.*; F. A. H. Gifford, *Prin. Soj.*; Jonathan H. Little, *R. A. Capt.*; Angus McKay, *M. of 3 V.*; John W. Small, *M. of 2 V.*; John Rozenenthal, *M. of 1 V.*; F. P. Cook, *S. S.*; John W. Beatty, *Tyler.*

G. A. R.

J. C. FREEMAN POST, No. 55.




Meets second and fourth Fridays in Library Building. G. H. Nickerson, *Com.*; G. Allen, *Sen. Vice.*; J. Cook, *Fr. Vice.*; G. Holbrook, *Adj.*; S. Smith, *Q. M.*; F. Wiggin, *O. D.*; J. H. Dearborn, *O. G.*; F. A. Smith, *Chap.*; Chas. Walker, *Sgt. Maj.*; Chas. Burkett, *Q. M. Sgt.*

LADIES' RELIEF CORPS, No. 51.

Meets first and third Mondays in G. A. R. Hall. Mrs. Mary Nickerson, *Pres.*; Mrs. Susie E. Young, *Sen. V. Pres.*; Mrs. H. Louise Lyford, *Jr. V. Pres.*; Mrs. Betsey Bickers, *Chap.*; Mrs. Mary C. Smith, *Sec.*; Miss L. T. Whorf, *Treas.*; Azubah Hammond, *Cond.*; Mrs. Mary E. Ellis, *Asst. Cond.*; Miss Sadie Walker, *Guard*; Miss Carrie Franzen, *Asst. Guard*.

I. O. O. F.

MARINE LODGE, No. 96.



Jere. A. Rich, *N. G.*; Geo. F. Miller, *V. G.*; Isaiah A. Small, *Sec.*; Heman S. Cook, *Treas.*; W. T. Burkett, *Warden*; Simeon C. Smith, *Con.*; Jas. A. Small, *Chap.*; Geo. W. Tuttle, *O. G.*; Atwood Mott, *I. G.*; N. H. Small, *R. S. N. G.*; Frank E. Hill, *L. S. N. G.*; Geo. W. Watson, *R. S. V. G.*; Geo. Cornell, *L. S. V. G.*; Silas R. Atkins, *R. S. S.*; Jonathan C. Lurten, *L. S. S.*; N. T. Freeman, *P. G.*

D. of R.

CHARITY DEGREE LODGE, No. 17.

Meets in Odd Fellows' Hall, Friday evenings. Mrs. E. T. Allen, *N. G.*; Miss B. Brooks, *V. G.*; Mrs. E. N. Sumner, *F. S.*; Mrs. A. Y. Cook, *R. S.*; Mrs. Joseph Whitcomb, *Treas.*

K. of H.

PROVINCETOWN LODGE, No. 2029.



J. Whitcomb, *D.*; J. F. Snow, *V. D.*; Parker L. Paine, *A. D.*; W. M. Smith, *R.*; A. L. Putnam, *F. R.*; P. C. Young, *Treas.*; Frank Wiggin, *Chap.*; A. F. Connell, *Guide*; A. Gayland, *Guardian*; John L. Rich, *S.*; W. S. Birge, M. D., *Med. Ex.*; G. H. Nickerson, J. G. Thompson, Duncan A. Matheson, *Trustees*; C. V. Sullivan, *Rep. to G. L.*; J. A. West, *Alternate*.

SEAMEN'S RELIEF SOCIETY.



Organized April 13, 1882. Its object, the temporary succor of shipwrecked seamen. Nathan Young, *Pres.*; Harvey S. Cook, Thomas Lewis, *Vice Pres.*; A. P. Hannum, *Sec.*; M. N. Gifford, *Treas.*; A. T. Williams, M. L. Adams, Mrs. Paron C. Young, Mrs. Xenophon Rich, David A. Small, Mrs. L. N. Paine, Mrs. Thomas N. Paine, Mrs. Geo. Hallett, S. Knowles, J. A. West, Joseph Whitcomb, *Directors*.

THE SUNDAY SCHOOL TEMPERANCE UNION.

Organized February 3, 1878. The members of the Sunday Schools of the town who have signed the temperance pledge are members of this organization. Mrs. Rebecca S. Paine, *Pres.*; Mrs. Martha A. Paine, *Sec.*; Mrs. Mary N. Lewis, *Treas.*; Miss Addie S. Mitchell, Mrs. Addie L. Putnam, Mrs. Irene P. Matheson, Mrs. Lizzie P. Atwood, Mrs. Mary C. Smith, *Managers*.

PROVINCETOWN PUBLIC LIBRARY.

Founded, A. D. 1874. William R. Mitchell, *Librarian*; Mamie E. Rich, *Asst. Librarian*. Number of books, 3513.

ARTICLE 1. The Library shall be open Mondays, Wednesdays and Saturdays, from 2.00 to 5.00 P. M. (excepting during the months of November, December and January, when it shall close at 4.30 P. M.), and from 7.00 to 9.00 P. M.

MISS ANNIE V. ORBON, Teacher of Piano and Organ.

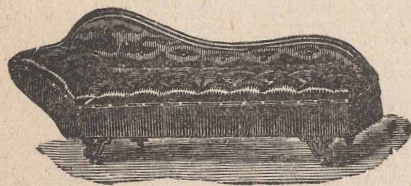
Lessons Given at Homes of Pupils.

NO. 10 COURT STREET.

ANDREW KENNEDY,

MANUFACTURER AND DEALER IN

Parlor, Chamber, Dining-Room and Kitchen Furniture,
Bedding and Feathers, Shades and Fixtures, Pictures and Frames,
Wooden and Hollow Ware, Glass and Crockery Ware.

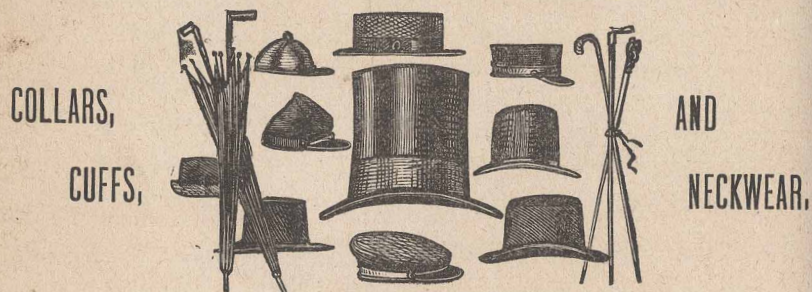


UPHOLSTERING
AND REPAIRING
A SPECIALTY.

*Our Facilities are such that we are enabled to offer Favorable
Inducements to Buyers.*

140 Commercial St., - Provincetown, Mass.

The Provincetown Hat Store.



S. C. MOTT,

DEALER IN

**HATS, CAPS, GENTS' FURNISHING GOODS,
TRUNKS, BAGS, ETC.**

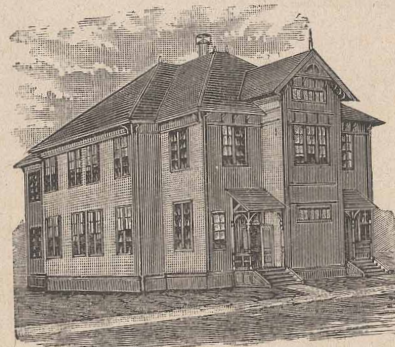
Our Stock is always Complete, of Best Quality and at Lowest Prices.

SCHOOLS.

OFFICERS AND TEACHERS.

Superintendent — Henry Shortle.

Committee — Henry Shortle, chairman ; Andrew T. Williams, A. L. Putnam.



HIGH SCHOOL BUILDING.

HIGH SCHOOL — S. H. Baker, prin.; Emma Gardner and Lucinda W. Whorf, assts.

GRAMMAR — Walter F. Sayward, prin.; Addie S. Mitchell, asst.

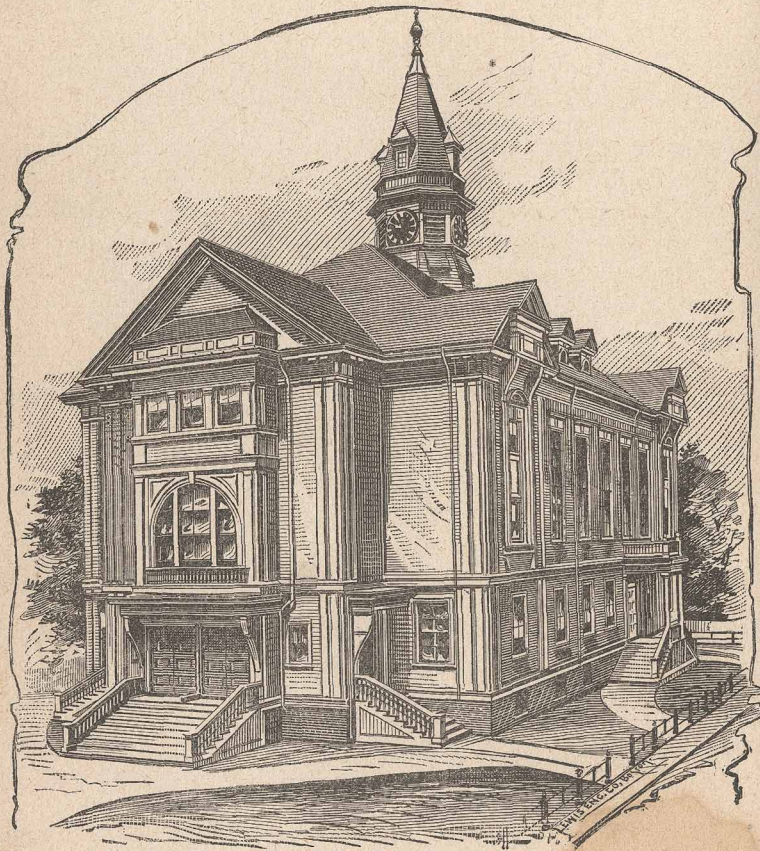
HIGHER INTERMEDIATE — *East*, Rebecca D. Sparks ; *West*, Ella A. Small ; *Center*, Sarah Cavanagh.

INTERMEDIATE — *East*, Abbie C. Sparks ; *West*, Clara L. Smith ; *Center*, Nellie B. Hilliard.

PRIMARY — *East*, Mary E. Dyer, Bessie Lyford ; *West*, Carrie A. Cowing, Angie F. Blake ; *Center*, Clara A. Ryder, Lottie D. Frellick ; *Conant St.*, Edith Small ; *Johnson St.*, Minnie Hamlin.

TOWN OFFICERS.

Selectmen, Assessors and Overseers of Poor — M. L. Adams, chairman ; Chas. H. Dyer, B. O. Gross.
Clerk and Treasurer — Seth Smith.
Road Surveyor — Ebenezer Cook.
Board of Health — F. C. Miller, W. W. Gleason, M. D., F. L. Newton, M. D.

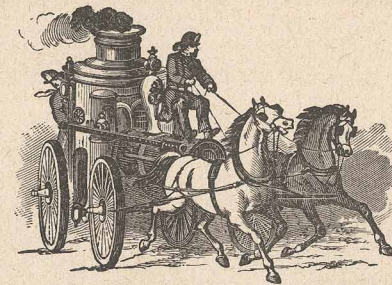


TOWN HALL.

(Photographed by G. H. Nickerson, Provincetown, Mass.)

FIRE DEPARTMENT.

Chief Engineer — J. D. Hilliard.
Assistants — L. N. Paine, Geo. O. Knowles, John G. Whitcomb, Geo. H. Holmes.
Clerk of the Board of Engineers — L. N. Paine.



RESCUE HOOK AND LADDER, No. 1.

Commercial street. *Foreman*, Jas. A. Small ; *asst.*, Jos. A. West ; *clerk*, Andrew T. Williams ; *steward*, Chas. A. Young.

ULYSSES ENGINE, No. 1.

Commercial street. *Foreman*, Joseph P. Bickers ; *assts.*, Jas. S. Dill, Thos. K. Paine ; *clerk*, Charles Gilds ; *steward*, Bangs A. Lewis.

FRANKLIN ENGINE, No. 2.

Commercial street. *Foreman*, Jas. Barnett ; *assts.*, Geo. A. Beatty, Fred E. Williams ; *clerk*, A. P. Hannum ; *steward*, Phineas S. Cutter.

MAZEPPA ENGINE, No. 3.

Commercial street. *Foreman*, Joseph W. Cook ; *assts.*, Fred Cook, Chas. P. Rogers ; *clerk*, H. Clifford Holmes ; *steward*, Walter S. Cook.

EXCELSIOR ENGINE, No. 4.

Commercial street. *Foreman*, M. Bradshaw ; *assts.*, Willard T. Burkett, John Adams ; *clerk*, Geo. F. Miller ; *steward*, Lemuel F. Nickerson.

TIGER ENGINE, No. 5.

Commercial street. *Foreman*, Joshua Paine, Jr.; *assts.*, Harry R. Cook, Leonard N. Swift; *clerk*, Wm. H. Young; *steward*, J. D. Hilliard, Jr.

Engineers' meetings at their room, Town Hall, Wednesday evening after first Tuesday of each month.

Company meetings, first Tuesday evening of each month.

PROVINCETOWN POST OFFICE.

Commercial street, head of R. R. wharf. P. C. Young, *Postmaster*; H. P. Nickerson, *Asst. Postmaster*. Office open from 7 A. M. to 12 M., and from 1 to 9 P. M.

Mails arrive: 1, 4 and 9 P. M. Mails close: 1.30 and 9 P. M. A direct mail to Wellfleet each week day, closing at 1.30 P. M.

PUBLISHERS' CARD.

The publishers desire to express their thanks to the people of Provincetown for uniform courtesy and aid extended to them and their agents in their labor of canvassing, and for the generous patronage received for the work. No pains have been spared to make the Directory full and correct, but the public are requested to bear in mind the difficulty of compiling the first edition of so large a list of names without an occasional minor error which can be better avoided in a second. The enterprising business houses of the town are largely represented, and we trust that they will receive a tenfold benefit.

W. F. RICHARDSON & CO.

Provincetown Resident Directory.

ABBREVIATIONS USED.

Agt., agent; asst., assistant; av., avenue; b., boards; bldg., building; blk., block; c., corner; ct., court; clk., clerk; emp., employee; ins., insurance; J. P., Justice of the Peace; lab., laborer; n., near; opp., opposite; pl., place; prof., professor; prop., proprietor; r., rear of; str., steamer. After the name of a street the word "street" is omitted.

Abbott Chas. W., fisherman, h. 1 Commercial.

Abbott Edwin, fisherman, h. 3 Commercial.

Abbott Mrs. Achsah, h. 3 Commercial.

Abbott John W., seaman, h. 240 Commercial.

Abbott Mrs. Melinda, h. 1 Commercial, in summer.

Adams Miss Emma V., prop. Adams' Museum, 409 Commercial, h. do.

ADAMS JOHN, groceries and provisions, 202 Commercial, h. do.

ADAMS JOHN D., apothecary and druggist, Commercial c. Gosnold, h. 78 Commercial.

Adams Marshall L., selectman, h. 202 Commercial.

Adams Solomon N., prop. Adams' Wier N. C., h. 409 Commercial.

Aiken Capt. Augustus, mariner, h. 521 Commercial.

Alexander Isaac B., h. 8 Mechanic.

Alexander John, fisherman, h. 480 Commercial.

Alexander Robert G., driven wells, h. Bradford c. Mechanic.

Allen Capt. Daniel, mariner, h. 3 Masonic pl.

Allen Daniel M., seaman, h. 3 Masonic pl.

Allen Gideon, farmer, h. Bradford opp. Conant.

Allen George, lumber, 192 Commercial, h. 165 do.

Allen John D., seaman, h. 3 Masonic pl.

Allen Capt. Wm., mariner, h. 3 Masonic pl.

Almada Amos, fisherman, h. Pleasant.

Alves Joseph, fisherman, b. 124 Commercial.

Teacher of Piano and Organ, MISS ANNIE V. ORBON, No. 10 Court Street. Lessons given at homes of pupils.

Alves Manuel, fisherman, h. Standish c. Alden.
 Amber Antone, seaman, h. 105 Commercial.
 Amber Joseph, seaman, h. 105 Commercial.
 Andrews Bernard, fisherman, h. r. 12 Court.
 Andrick Manuel, fisherman, h. r. 119 Commercial.
 Anger Edmund P., fisherman, h. 16 Alden.
 Atkins Benj. D., sailmaker, h. 421 Commercial.
 Atkins Benj. W., fisherman, h. 421 Commercial.
 Atkins Chas. C., rigger, h. 12 Pearl.
 Atkins Mrs. Ellen F., h. 557 Commercial.
ATKINS Dr. ENOS N., dentist, 242 Commercial, h. Bradford c. Winthrop.
 Atkins Mrs. Hannah, 85 years of age, h. 16 Winthrop.
 Atkins Capt. Henry, fisherman, h. 559 Commercial.
 Atkins James E., clerk J. A. West, h. 13 Central.
 Atkins James F., fisherman, h. Elm.
 Atkins Capt. James S., 13 Central.
 Atkins Capt. John, mariner, h. Commercial.
 Atkins Capt. John W., seaman, h. Bradford n. C. School.
 Atkins Joseph, wood sawyer, h. 3 Mechanic.
 Atkins Capt. Joshua, h. 4 Atkins.
 Atkins Mrs. Marian, housekeeper, 537 Commercial.
 Atkins Mrs. Mary A., h. Kilburn ct.
 Atkins Mrs. Mary N., 87 years of age, h. 267 Commercial.
 Atkins Nathaniel, fisherman, h. Elm.
 Atkins Mrs. Rachel C., h. Bradford.
 Atkins Robert S., freight agt. Str. Longfellow, h. 13 Central.
 Atkins Russell, fisherman, h. 161 Commercial.
 Atkins Russell Jr., blockmaker, h. Bradford opp. Central.
 Atkins Silas R., calker, h. Bradford n. Conant.
 Atkins Wm. A., h. 157 Commercial.
 Atkins Wm. T., prop. water boat, h. 161 Commercial.
 Atwood Daniel W., fisherman, h. 5 Commercial.
 Atwood Henry, fisherman, h. 135 Commercial.
 Atwood James W., h. 22 Court.
 Atwood Joseph S., tax collector, h. 198 Commercial.
 Atwood Myrick C., mfr. Atwood's cod liver oil, h. 6 Nickerson.

Atwood Hon. Nathaniel E., mfr. Atwood's cod liver oil, h. 6 Nickerson.
 Atwood Capt. Rodolphus, mariner, h. 53 Commercial.
 Atwood Mrs. Stephen, h. 137 Commercial.
 Atwood Stephen F. A., ice, Union Ice Co., 137 Commercial, h. do.
 Atwood Stephen F., fisherman, h. Atwood.
 Avelar Jesse M., fisherman, h. 376 Commercial.
 Avelar John F., fisherman, h. Bradford c. Law.
 Avelar Manuel F., fisherman, h. Standish n. almshouse.
 Ayer Nathaniel W., janitor town hall, h. Prince.
 Azulay Abraham, fisherman, h. 5 Pleasant.
 Bailey Ephraim, seaman, h. r. 281 Commercial.
 Bailey Manuel, fisherman, h. 416 Commercial.
 Bailey Capt. Oliver E., mariner, h. r. 281 Commercial.
 Baker Miss Allen, h. Bradford n. the depot.
 Baker Frank D., fireman O. C. R. R., h. Bradford n. the depot.
 Baker Lewis H., druggist, h. 7 Center.
 Baker Mrs. Rosa R., h. Bradford n. the depot.
 Baker Wm. C., engineer O. C. R. R., h. 280 Commercial.
 Bangs Capt. Elijah, master mariner, h. 391 Commercial.
 Bangs Frank S., mariner, h. 391 Commercial.
 Bangs James D., fisherman, h. Young's ct.
 Bangs Paul L., fisherman, h. Young's ct.
 Bangs Capt. Perez, Bangs' wier, h. 415 Commercial.
 Bangs Mrs. Rebecca, tailoress, h. Lovett.
BBANGS SOLOMON, prop. Bangs' wier and wholesale fish dealer, 424 Commercial, h. 415 do.
 Bannister Chas. F., feather renovater, h. 5 Conant.
 Bannister Capt. Chas. H., mariner, h. 5 Conant.
 Barnard James, teamster, h. r. 153 Commercial.
 Barnes Joseph, lab., h. Alden.
 Barnes Joseph, h. Standish.
 Barnes Joseph Jr., fisherman, h. Standish opp. the depot.
 Barnett Frank, emp. A. T. Williams, h. 6 School.
 Barnett Mrs. Hannah, h. School.
 Barnett Michael, lab., h. 4 Central.
 Barnett Mrs. Richard, h. 6 School.

Barnett R. Frank, teaming and jobbing, h. School.
 Battle Capt. Thomas, mariner, h. r. 181 Commercial.
 Bawdick Richard, canmaker, h. 406 Commercial.
 Baxter Mrs. Hannah D., h. 3 Tremont.
 Baxter Robert D., sailmaker, h. 203 Commercial.
 Beal Mrs. Mattie, forewoman shirt factory, b. Central House.
 Beatty Geo. A., calker, h. 9 Pleasant.
 Beatty John W., calker and graver, h. 9 Pleasant.
 Bell Capt. John, mariner, h. 18 Pearl.
 Bennett James K., b. 272 Commercial.
 Bennett Peter, rigger and cooper, h. Dyer.
 Bennett Peter, seaman, h. Dyer.
 Bennett Samuel A., ice dealer, 12 Standish, h. do.
 Bennett Stephen, ice dealer, 12 Standish, h. do.
 Bennett Mrs. —, h. r. 473 Commercial.
 Benson Capt. Benj. T., mariner, h. 10 Pleasant.
 Berry Elbridge G., mariner, h. 201 Commercial.
 Berry Joseph, fisherman, h. 14 Court.
 Berry Samuel H., shoemaker, Commercial W. end.
 Betancourt Manuel E., fisherman, h. Pleasant.
 Bickers Chas. S., fisherman, h. Howland.
 Bickers George H., fisherman, h. 28 Franklin.
BICKERS JOSEPH P., shipwright and spar-maker, h. Howland.
BIRGE WM. S., M. D., physician and surgeon, Commercial c. Gosnold, h. do.
 Blake Miss Angie F., teacher, h. Cottage.
 Blake James H., boots, shoes and rubbers, h. Cottage.
 Blundell Mrs. Mary, h. 27 Franklin.
 Boardman Antone, fisherman, h. Pleasant.
 Booth James A., foreman Picket's canning factory, h. Bradford c. Dyer.
 Borgies John, fisherman, h. Franklin.
 Bowley Freeman M., lab., h. Bradford E. end.
 Bowley Gideon, surfman U. S. L. S. Station, h. r. Pilgrim House.
 Bowley Capt. Gideon, h. Commercial c. Court.
 Bowley James V., surfman U. S. L. S. S. No. 6, h. Bradford E. end.

Bowley Wm. W., lab., b. A. F. Whorf.
 Bowling David, fisherman, h. Creek road.
 Bradshaw W. M., fish dealer (Bradshaw & Co.), 146 Commercial, h. 12 Standish.
 Bragdon Sumner, clerk Central House.
 Brazile Joseph, fisherman, h. r. 119 Commercial.
 Brazile Capt. Manuel, fisherman, h. Pleasant.
BROOKS EBEN L., livery stable, barges, teaming, etc. (N. C. Brooks & Son), 96 Commercial, h. 95 do.
 Brooks Mrs. Melissa, h. 337 Commercial.
BROOKS NEWELL C., pleasure and depot carriages, livery stable, etc. (N. C. Brooks & Son), 96 Commercial, h. 95 do.
 Brown Alfred N., carpenter, h. 29 Pearl.
 Brown Capt. Benj., master mariner, h. r. 301 Commercial.
 Brown Chas., fisherman, h. 16 Alden.
 Brown Frank, fisherman, h. 473 Commercial.
 Brown Geo., fisherman, h. 12 Court.
 Brown Geo. O., emp. O. C. R. R., h. head of Center.
 Brown Mrs. Hannah R., h. 139 Commercial.
BROWN JOHN, groceries and provisions, 139 Commercial, h. do.
 Brown Joseph, fisherman, h. 10 Franklin.
 Brown Joseph, seaman, h. 139 Commercial.
 Brown Manuel S., fisherman, h. r. 338 Commercial.
 Brown Reuben, ship carpenter, h. 8 Central.
 Brown Reuben F., carpenter, h. 8 Central.
 Burch Chas. W., seaman, h. 7 Vine.
 Burch Capt. Elisha S., fisherman, h. 7 Nickerson.
 Burch Enos S., emp. O. C. R. R., h. Bradford n. Atkins.
 Burch Geo. M., fisherman, h. r. 27 Franklin.
 Burch Geo. H., lab., h. 217 Commercial.
BURCH JOHN M., clothing, gents' furnishings, etc., 268 Commercial, h. 98 do.
 Burch Nathaniel, seaman, h. 5 Tremont.
 Burch Wallace A., clerk, h. 98 Commercial.
 Burch Mrs. Nancy H., h. 98 Commercial.
 Burden Eugene, fisherman, h. 17 Commercial.
 Burke Edward, fisherman, h. r. 136 Commercial.

Burke James, fisherman, h. r. 136 Commercial.
 Burke John, fisherman, h. r. 136 Commercial.
 Burke Mrs. Louisa, h. r. 136 Commercial.
 Burkett Wm. T., fish dealer, opp. town hall, h. Cudworth.
 Burns John, fisherman, h. Alden.
 Burt Capt. Edward C., master U. S. Str. Tourist, h. 6 Winslow.
 Burt Capt. John, h. 16 Commercial.
 Burt Capt. M. Wm., master B. & P. packet, h. 4 Carver.
 Burt Mrs. Rebecca, h. 417 Commercial.
 Cabrel Frank, fisherman, h. r. 65 Commercial.
 Cabrel Capt. Joseph, mariner, h. Bradford n. Court.
 Cabrel Manuel, fisherman, h. Franklin.
 Cadosa Joseph F., seaman, h. 38 Pearl.
 Cadosa Manuel, fisherman, h. head Tremont.
 Campbell Capt. Archibald, mariner, h. Bradford c. Bangs.
 Campbell James, teaming and jobbing, 7 Pleasant, h. do.
 Campbell Capt. John W., mariner, h. r. 271 Commercial.
 Campbell Michael, fisherman, h. Commercial W. end.
 Carr James H., lab., h. Pleasant.
 Carr Mrs. Patrick, h. head Franklin.
 Cashman Geo., mason, h. Bradford n. Conant.
 Cashman James, fisherman, h. Bradford n. Conant.
 Carrigan Capt. Thomas J., mariner, h. 414 Commercial.
 Carlos Joseph, fisherman, h. Bradford n. Howland.
 Carlos Joseph, fisherman, h. 14 Court.
 Carlow David S., ice cream mfr., h. 410 Commercial.
 Carnes Capt. John M., farmer, h. Bradford n. Pleasant.
 Cashin Edmund N., emp. J. Nickerson, b. Mrs. D. F. Dexter.
 Caton Mrs. Anna, h. 7 Alden.
 Caton Manuel, fisherman, h. Turner.
 Caton Joseph A., fisherman, h. Standish.
 Caton Joseph M., fisherman, h. Franklin.
 Caton Manuel, fisherman, h. Bangs.
 Caton Mrs. Phœbe, h. Brown.
 Caton Mrs. Sarah, laundress, h. 25 Pearl.
 Cavanagh Hugh, h. Pleasant.
 Cavanagh Capt. Michael, seaman, h. Pleasant.
 Cavanagh Miss Sarah, teacher, h. Pleasant.

Carvalho Antone, fisherman, h. Pleasant n. Bradford.
 Caville Manuel, fisherman, b. Jackson Silva.
CHAMBERLAIN Mrs. JULIA M., millinery, etc., 228 Commercial, h. do.
 Chapman Frank, asst. keeper Race Point Light.
 Chapman Capt. Samuel, mariner, h. 235 Commercial.
 Chapman Stephen F., ice cream, lobsters, etc., (D. S. C. & Co.) 110 Commercial, b. 336 do.
 Chapman Mrs. Thankful, dressmaker, 110 Commercial, h. do.
 Chapman Capt. Wm. N., boarding house, 233 Commercial.
 Chase Mrs. Catherine, h. 326 Commercial.
 Chase Frank, teaming and jobbing, 113 Commercial, h. do.
 Chase Joseph L., grocer, 328 Commercial, h. 326 do.
 Chase Capt. Josiah A., mariner, h. r. 271 Commercial.
 Chase Julius B., fireman O. C. R. R., b. 272 Commercial.
 Chase Mrs. Lucy A., h. Bradford n. C. school.
 Chase Mrs. Millie A., dressmaker, r. 271 Commercial, h. do.
 Chase Timothy T., baggage master O. C. depot, h. 200 Commercial.
 Childs Mrs. —, emp. shirt factory, h. 155 Commercial.
 Chipman Albert, fisherman, b. 8 Commercial.
 Chipman Capt. Henry T., mariner, h. 8 Commercial.
 Chisholm Murdock, seaman, h. 414 Commercial.
 Chisholm Philip D., clerk D. S. Matheson, h. 7 Atkins.
 Chisholm Capt. Roderick, mariner, h. 7 Atkins.
 Clark Albert, fisherman, h. Lovett.
 Clark Mrs. Lucinda, h. 106 Commercial.
 Clark Mrs. Sabina S., dressmaker, 150 Commercial, h. do.
 Cobb Albert, mariner, h. Soper.
 Cobb Mrs. Adelia K., h. Bradford c. R. R. sq.
 Cobb Mrs. Bertha, h. Tremont c. Nickerson.
 Cobb Mrs. Daniel C., matron almshouse, Alden.
 Cobb Capt. Daniel C., h. almshouse, Alden.
 Cobb Mrs. Eunice A., dressmaker, h. Bradford c. R. R. sq.
 Cobb Geo. W., baggage master O. C. R. R., h. 2 Gosnold.
 Cobb James, carpenter and builder, Central, h. 252 Commercial.
 Cobb John K., fisherman, h. 404 Commercial.

- Cobb Capt. Orin, mariner, h. 232 Commercial.
 Colburn Rev. Wm. W., pastor Center M. E. church, h. 4 Center.
 Cole John A., engineer Str. A. G. Nickerson, h. 10 Vine.
 Coleman James, fisherman, h. Conant.
 Collins Isaac, ship carpenter, Central wharf, h. Commercial c. Winthrop.
 Collins John E., fisherman, h. 189 Commercial.
 Collins Capt. Jonathan, Agt. Union Fish Co., h. Center n. Bradford.
 Collins Joseph, painter, h. 7 Conant.
 Collins Manuel, fisherman, h. 9 Conant.
 Collins Richard F., fisherman, h. 189 Commercial.
 Conant Mrs. Oliver, h. 6 Atkins.
 Connelly John, teamster, h. Cornell, near the R. R.
 Connelly John, h. head of Conant.
 Conwell A. Frank, clerk D. Conwell, h. 3 Pearl.
 Conwell David, wholesale fish dealer, 356 Commercial, h. 3 Pearl.
 Conwell Robert E., clerk D. Conwell, h. 353 Commercial.
 Conwell Walter L., fisherman, h. Center n. R. R.
 Cook Capt. Alfred, Boston Packet, h. 431 Commercial.
 Cook Atkins D., fisherman, b. 13 Court.
 Cook Caleb, watch oil mfr. C. C. & Son, Miller Hill, h. do.
 Cook Chas., h. 367 Commercial.
 Cook Capt. Chas. A., Grocer and Ship Chandler, 240 Commercial, h. 243 do.
 Cook Chas. A. Jr., seaman, h. 243 Commercial.
 Cook Chas. D., h. 367 Commercial.
 Cook Capt. Daniel C., ship owner and fish dealer, h. 429 Commercial.
 Cook David, mariner, b. Capt. A. M. McKennon.
COOK EBENEZER, grocer, S. G. Cook, h. 427 Commercial.
COOK E. KIBBY, grocer, S. G. Cook, 424 Commercial, h. 427 do.
 Cook Elisha H., sailmaker, h. 425 Commercial.
 Cook Mrs. Elizabeth E., h. Kilburn.
 Cook Emerson D., mariner, h. 5 Masonic pl.
 Cook E. Parker, book-keeper, h. 423 Commercial.

- Cook Capt. Ephraim, 80 years of age, h. 423 Commercial.
 Cook Francis P., rigger, Central wharf, h. Bradford, opp. town hall.
 Cook Francis W., h. r. 10 Carver.
 Cook Frank, fisherman, h. Montello.
 Cook Frank A., h. r. 10 Carver.
 Cook Frank J., fisherman, h. 12 Montello.
 Cook Fred F., sailmaker, C. Bros., Knowles' wharf, h. 356 Commercial.
 Cook Fred W., h. 369 Commercial.
 Cook Freeman, switchman, O. C. R. R., h. Dyer.
 Cook Geo. M., seaman, h. Kilburn ct.
COOK Mrs. HANNAH C., "Curiosity Shop," 344 Commercial, h. do.
 Cook Capt. Harvey A., mariner, h. 8 Pearl.
 Cook Harvey, wrecking master and marine ins., h. 8 Pearl.
 Cook Miss Harriet, h. 215 Commercial.
COOK HEMAN S., paper stock, auctioneer, etc., 344 Commercial, h. do.
COOK Capt. HENRY, ship owner and wholesale fish dealer, H. & S. C., 438 Commercial, h. 437 do.
 Cook Capt. James 2d., fish dealer, 348 Commercial, h. 347 do.
 Cook James D., fish packer and dealer, S. B. wharf, h. 8 Carver.
 Cook Capt. James M., mariner, h. 5 Winslow.
 Cook Capt. John J., h. 369 Commercial.
 Cook Jonathan Y., merchant, h. 243 Commercial.
 Cook Joseph W., painter h. 370 Commercial.
 Cook Joshua, ship carpenter, h. 8 Cottage.
 Cook Mrs. Lemuel, h. Bradford c. Carver.
 Cook Capt. Lemuel D., h. 5 Masonic pl.
 Cook Mrs. Londra, h. r. 271 Commercial.
 Cook Levi H., surfman U. S. L. S. Station No. 6, h. Tremont c. Nickerson.
 Cook Nathaniel, emp. H. & S. Cook, h. 433 Commercial.
 Cook Capt. Philip, h. 241 Commercial.
 Cook Mrs. Rebecca, h. 5 Cudworth.
 Cook Mrs. Rebecca, h. Cornell n. R. R.

- Cook Richard W., fisherman, h. 369 Commercial.
 Cook Mrs. Sarah, h. 5 Cudworth.
 Cook Capt. Stephen, Pres. First National Bank, h. 349 Commercial.
COOK Capt. SYLVANUS, ship owner and fish dealer, H. & S. C., h. 435 Commercial.
 Cook Capt. Tilton, dining rooms, 224 Commercial, h. do.
 Cook Walter, sailmaker, h. Cornell, n. R. R.
 Cook Wm. K., salesman, Boston, h. 423 Commercial.
 Cook Wm. W., surfman, U. S. L. S. Station No. 7, h. 31 Carver.
 Cook Mrs., h. 5 Central.
 Cornell Capt. Geo. H., mariner, h. 8 Winslow.
 Cornell Geo. H. Jr., house painter, h. 8 Winslow.
 Cornell Mrs. Martin W., h. Cornell n. Bradford.
 Corea Francis J., mariner, h. 20 Court.
 Corea Francis J. Jr., mariner, h. 20 Court.
 Corea Joseph K., mariner, h. 20 Court.
 Corea Wm. J., mariner, h. 20 Court.
 Costa Mrs. Enos, grocer, 108 Commercial, h. do.
 Costa Joseph, fisherman, h. r. 336 Commercial.
 Costa Manuel, fisherman, h. Pleasant.
 Costa Manuel, fisherman, h. Cornell.
 Costa Manuel, fisherman, h. 12 Court.
 Covel Chandler, h. 17 Commercial.
 Cowing Miss Carrie A., teacher, h. Soper.
 Cowing Henry W., seaman, h. Soper.
 Cowing Wm. E., fisherman, h. 555 Commercial.
 Craville Antone, seaman, h. 3 Court.
 Craville Jesse, fisherman, h. 8 Montello.
 Crawlins Frank, fisherman, h. Creek Road.
 Crawlins Joseph, fisherman, h. Creek Road.
 Critchett Chas. H., 79 years of age, h. 103 Commercial.
 Crocker Andrew, h. Prince n. C. Church.
CROCKER BENJ. T., dry and fancy goods, J. A. Crocker, 156 Commercial, h. 10 Winthrop.
 Crocker Lot, baggage master O. C. R. R., h. 6 Webster pl.
 Crocker Philander, blacksmith, Hilliard's wharf, h. Bradford c. Winslow.

- C**ROCKER Mrs. REBECCA N., patterns, stamping, etc., 156 Commercial, h. 10 Winthrop.
 Crocker Mrs. Susan, 78 years of age, h. 23 Court.
 Crocker Zenas W., fisherman, h. Prince opp. Cudworth.
 Crosby Geo. W., fisherman, h. 9 Atkins.
 Cross Joseph, mariner, h. 149 Commercial.
 Cross Wm. P., seaman, h. 149 Commercial.
 Crowell Henry O., lab., h. Bradford, n. town hall.
 Crowell J. Elwood, telegrapher O. C. depot, b. Pilgrim house.
 Crowell Joseph, fisherman, h. Turner.
 Crowell Mrs. Maria L., h. 9 Nickerson.
 Crowell Mrs. Mary E., millinery and fancy goods, 235 Commercial, h. do.
 Crowell Seth, cooper, h. Bradford, n. town hall.
 Crowley Manuel, fisherman, h. Soper, last house.
 Curran Capt. Wm., h. 343 Commercial.
 Cushman Alfred W., conductor O. C. R. R., h. Bradford opp. Prince.
 Cutter Mrs. Lucy, h. 152 Commercial.
 Cutter Phineas S., sailmaker, h. 152 Commercial.
 Cutter Mrs. Rebecca G., h. 107 Commercial.
 Cutter Wallace, clerk J. L. Rich store, h. 152 Commercial.
 Dalmedia Alves, fisherman, h. Bradford, last house W.
 Dars Francis A., gardener and milkman, h. 525 Commercial.
 Davis John, fisherman, h. Pleasant.
 Davis Capt. John H., seaman, h. 382 Commercial.
 Davis John W., fisherman, h. r. 13 Franklin.
 Davis Manuel, fisherman, h. head Tremont.
 Days Frank, fisherman, h. Bradford n. Franklin.
 Days Capt. John, mariner, b. 15 Franklin.
 Days Capt. John J., fisherman, h. Turner.
 Days Joseph M., fisherman, h. Turner.
 Days Richard J., carpenter, h. Kilburn ct.
 Dearborn Alvah E., paper hanger, h. Winslow.
 Dearborn J. Harvey, janitor high school, paper hanger and constable, h. Winslow.
 DeCosta Geo., fisherman, h. Bradford n. Franklin.
 DeCosta Mrs. Justine, h. 16 Franklin.

DeCosta John, fisherman, h. 6 Franklin.
 Denis Antone, fisherman, h. 402 Commercial.
 DeWolf Mrs. George, h. r. Gifford House.
 DeWolf Joseph R., fisherman, h. 79 Commercial.
 Dexter Mrs. Daniel F., h. Bradford opp. C. school.
 Dill James S., emp. Eastern Wier Co., h. n. Engine No. 1.
 Ditson James L., h. 127 Commercial, in summer.
 Doane Capt. James, mariner, h. 377 Commercial.
 Doane Mrs. Ruth H., h. 13 Court.
 Doggett Capt. James, mariner, h. Johnson.
 Doggett Mrs. Jennet, h. Bradford n. Howland.
 Dolan, fisherman, h. Sparrow.
 Doland Capt. Archie, mariner, h. 335 Commercial.
 Dolliver James M., Boston pilot, h. Commercial, last house W.
 Dolliver Walter S., Boston pilot, h. Commercial, last house W.
 Dowling Capt. Alexander, mariner, h. 5 Central.
 Dowling Capt. Daniel W., mariner, h. Grove.
 Downer James M., sailmaker, h. Turner.
 Doyle Thomas, fisherman, b. A. P. Lucas, Alden.
 Dunham Mrs. Abbie, h. Nickerson pl.
 Dunham James C., fisherman, h. Bradford n. Pleasant.
 Dunham James W., fisherman, h. Bradford n. Pleasant.
 Dunham Capt. John A., mariner, h. Freeman junc. Standish.
 Dunham Leonard F., engineer, h. Nickerson pl.
 Dunham Nathan, fisherman, h. Bradford c. Winthrop.
 Dunham Mrs. Olive G., boarding-house, Bradford.
 Dunlap Mrs. Almira, 4 Standish.
 Dutra John J., fisherman, h. off Pleasant.
 Dutra John S., fisherman, h. 17 Pearl.
 Dyer Miss Ada H., teacher of painting, 11 Winthrop, h. do.
 Dyer Benj. H., painter, h. 11 Winthrop.
DYER Miss BERTHINA, fancy goods and small wares, 374 Commercial, h. 407 do.
 Dyer Chas. A., clerk R. B. Dyer, h. 407 Commercial.
DYER CHAS. H., sailmaker, 424 Commercial, h. 407 do.

Dyer Edward A., clerk J. D. Hilliard, h. 11 Carver.
 Dyer Capt. Geo. W., mariner, h. Dyer.
 Dyer Henry T., seaman, h. Commercial c. Howland.
 Dyer J. Henry, treasurer savings bank, h. 277 Commercial.
 Dyer Capt. Isaac A., groceries and provisions, 344 Commercial (Sparks & Dyer), h. Dyer.
 Dyer Joseph B., fisherman, h. 389 Commercial.
DYER Mrs. L. JANE, dining rooms, bakery, confectionery, 272 Commercial, h. do.
 Dyer Miss Mamie E., teacher, h. 375 Commercial.
 Dyer Mrs. Martha, h. 8 Conant.
DYER Mrs. REBECCA, groceries and provisions, 370 Commercial, h. 407 do.
 Dyer Richard F., painter, h. 272 Commercial.
 Dyer Mrs. Sarah S., h. 342 Commercial.
 Dyer Mrs. Susan J., h. Commercial c. Howland.
DYER THOMAS W., paints, oils, varnishes, etc., 97 Commercial, h. 6 Tremont.
 Dyer Capt. Wm., h. 375 Commercial.
 Dyer Capt. Wm. H., mariner, h. 375 Commercial.
 Eaton Geo., carpenter, 83 years of age, h. 13 Franklin.
 Edmunds M. Enos, seaman, h. 23 Pearl.
 Elder Wm. A., cooper, b. Central House.
 Eldridge Mrs. Rebecca S., nurse, h. Commercial c. Kiley.
 Ellington Raymond, station agt. O. C. R. R., h. Gosnold c. Bradford.
 Elliott John T., sexton St. Peter's church, h. Prince.
 Elliott Mrs. Olive, h. 2 Gosnold.
ELLIOTT Rev. THOMAS P., pastor St. Peter's Catholic church, h. Prince.
 Ellis Geo. W., teaming and jobbing, Commercial W. end, h. do.
 Ellis Joseph, fisherman, h. 9 Alden.
 Ellis Joseph C., fisherman, h. r. 285 Commercial.
ELLIS Mrs. MARY J., groceries, dry and fancy goods, 511 Commercial, h. do.
 Ellis Mrs. Sarah E., dressmaker, 13 Commercial, h. do.
 Ellis Capt. Sylvester, fisherman, h. 13 Commercial.
 Ellis Wm. W., mariner, h. head Franklin.

Emery Alfred J., fisherman, h. 4 Nickerson.
 Emery Cushing H., fisherman, h. 4 Pleasant.
 Emery Edward E., fisherman, h. Tremont, last house.
 Emery James, h. Commercial c. Mechanic.
 Emery Joseph H., seine mender, h. 13 Franklin.
 Engles Herbert, student, h. Johnson.
 Engles James, stoves, tinware, etc., h. Johnson.
 Enos Frank, fisherman, h. head Tremont.
 Enos Frank, seaman, h. Pleasant.
 Enos Geo. F., fisherman, b. 164 Commercial.
 Enos Mrs. John, h. 11 Vine.
 Enos Joseph, fisherman, h. off Standish.
 Enos Joseph, fisherman, b. 8 Franklin.
 Enos Joseph, fisherman, h. n. cemetery.
 Enos Joseph, fisherman, h. 5 Alden.
 Enos Joseph, fisherman, h. Standish.
 Enos Joseph, fisherman, h. 442 Commercial.
 Enos Manuel, fisherman, h. Standish.
 Enos Manuel, fisherman, h. 544 Commercial.
 Enos Manuel, fisherman, h. Bangs.
 Enos Wm., fisherman, h. Bradford n. Dyer.
 Ewell Ezra D., ship carpenter, h. 112 Commercial.
 Ewell Capt. Seneca G., mariner, h. 104 Commercial.
 Facha Manuel, fisherman, h. Pleasant n. Bradford.
 Faixa Frank, fisherman, h. Alden.
 Faixa Joseph, fisherman, h. Alden.
 Fancy Mrs. Sophia, h. 63 Commercial.
 Fasha Joseph, fisherman, h. Franklin.
 Fasha Manuel T., fisherman, h. Franklin.
 Ferreira Capt. Joseph A., seaman, h. 384 Commercial.
 Ferreira Wm. H., fisherman, h. Cornell n. R. R.
 Fernandes Mrs. Anna J., h. Turner.
 Ferry Joseph, fisherman, h. Conant.
 Fielding Warren, com. trav., h. 9 Mechanic c. Tremont.
FISH SILAS D., restaurant, cigars, etc., 262
 Commercial, h. Commercial opp. town hall.
 Fish Wm. E., seaman, h. r. 227 Commercial.
 Fishburn Geo. W., fisherman, h. Turner.
 Fisher Spencer V., surfman U. S. L. S. Station, h. Bangs.
 Fisher Capt. Caleb, carpenter, h. Bangs.

Fisher Isaac G., keeper U. S. L. S. Station No. 7, h. 182
 Commercial.
 Fisher Capt. Joseph S., mariner, h. Center n. R. R.
 Fisher Capt. Samuel, fisherman, h. Cornell n. Bradford.
 Fisher Samuel O., surfman U. S. L. S. Station No. 7, h.
 Cornell n. Bradford.
 Floras Antone, fisherman, h. Prince n. Bradford.
 Floras Joseph, steward, h. Bradford c. Law.
 Floras Manuel, fisherman, h. Turner.
 Flynn James, fisherman, h. Cornell.
 Foot Joseph, fisherman, h. 387 Commercial.
 Ford Clem, night watch O. C. R. R., h. off Johnson.
 Forrest Capt. Wm. H., mariner, h. Bradford n. town hall.
 Foster Mrs. Charles, h. Brown c. Winthrop.
 Foster Capt. Chas. A., mariner, h. 54 Commercial.
 Foster Capt. Manuel, fisherman, h. Standish.
 Foster Capt. Manuel, mariner, h. r. 119 Commercial.
 Foss Frank R., seaman, h. Cornell n. R. R.
 Francis John F., hairdresser, 306 Commercial, h. r. 277 do.
 Francis John, fisherman, h. 11 Franklin.
 Francis Joseph, fisherman, h. 17 Franklin.
 Francis Joseph, fisherman, h. Pleasant.
 Francis Manuel, fisherman, h. Soper, last house.
 Francis Manuel, fisherman, h. n. No. 1 engine house.
 Francis Manuel, fisherman, h. 16 Alden.
 Francis Manuel, fisherman, h. 548 Commercial.
 Frank Joseph, fisherman, h. John.
 Frank Peter, fisherman, h. 334 Commercial.
 Franzen Eugene E., fisherman, h. 34 Pearl.
 Franzen Frederick C., seaman, h. 39 Pearl.
 Franzen Mrs. Phœbe A., h. 39 Pearl.
 Fratus Antone, h. r. 538 Bradford.
 Fratus Antone Jr., fisherman, h. 526 Commercial.
 Fratus Arson, fisherman, h. Bradford c. Franklin.
 Fratus Frank, fisherman, h. r. 538 Bradford.
 Fratus John, fisherman, h. r. 119 Commercial.
 Fratus Mrs. John, h. r. 119 Commercial.
 Fratus Joe, fisherman, h. 16 Vine.
 Fratus John, fisherman, h. 550 Commercial.
 Fratus Manuel, fisherman, h. Bradford n. Cottage.

- Fratrus Mrs. Mary, h. Montello.
 Frayer Anthony, clerk Perry's fruit store, h. Bradford n. Dyer.
 Frayer Mrs. Rita, h. Bradford n. Dyer.
 Frazier Chas., seaman, b. Mrs. M. McKay.
 Freeman Albert M., student, Yale, h. 5 Court.
 Freeman Mrs. Amelia H., dry goods and small wares, 70 Commercial, h. Nickerson.
 Freeman Mrs. Benj., dressmaker, 191 Commercial, h. do.
 Freeman H. Bradford, feather renovater, h. 5 Franklin.
 Freeman Miss Emma B., milliner, 191 Commercial, h. do.
 Freeman Geo. W., fisherman, h. 22 Commercial.
 Freeman Hatsuld, fisherman, h. 5 Franklin.
 Freeman Capt. John E., prop. yacht Arbutus, h. Tremont c. Soper.
 Freeman Mrs. Mary, dressmaker, 6 Central, h. do.
FREEMAN NATHANIEL T., editor and publisher *Provincetown Advocate*, Marine Hall, h. Cornell.
 Freeman Nathaniel R., fisherman, h. 118 Commercial.
 Freeman Capt. Nathaniel W., mariner, h. 6 Cottage.
 Freeman Philip, seaman, h. 6 Central.
 Freeman Prince, fisherman, h. 20 Commercial.
 Freeman Capt. Prince I., mariner, h. 5 Cook.
 Freeman Capt. Reuben, h. 5 Court.
 Freeman Reuben F., seaman, h. 5 Court.
 Freeman Willie L., fisherman, h. 20 Commercial.
 Frellick Mrs. Joseph, h. 15 Pearl.
 Frellick Miss Lottie, teacher, h. 15 Pearl.
 Frider Joseph, fisherman, h. Franklin.
 Fuller Albert W., cutter, tailor, h. 181 Commercial.
 Fuller Chas. A., mason, Bradford c. Carver, h. do.
 Fuller James, mason, Central wharf, h. 181 Commercial.
 Fuller James W., fisherman, h. 181 Commercial.
 Garland John, fisherman, h. Johnson.
 Gasper Antone, fisherman, h. 16 Vine.
 Gasper Manuel, fisherman, h. 4 Franklin.
GAYLAND ALEXANDER, contractor, wharf builder, building mover, etc., 300 Commercial, h. do.
 Gayland Wm. R., carpenter, h. 300 Commercial.

- Gensen Hans P., h. r. 303 Commercial.
 George Antone, fisherman, h. Bradford c. Bangs.
 Garauld Mrs. Hannah, h. 6 Center.
 Ghen Mrs. Annie, h. 29 Carver.
 Ghen Jesse, mate Str. A. B. Nickerson, h. 48 Commercial.
 Ghen Samuel H., carpenter, h. 117 Commercial.
 Gifford Fred A. H., apothecary, Gifford's blk., h. 5 Webster pl.
 Gifford Isaiah, submarine contractor, 323 Commercial, h. do.
GIFFORD JAMES, prop. Gifford House, collector customs, h. Carver c. Bradford.
GIFFORD MOSES N., cashier first national bank, agt. Lombard Investment Co., h. 12 Carver.
 Gifford Nathaniel N., submarine contractor, h. 1 Freeman.
 Gifford Simeon S., ins. agt., Gifford's blk., h. 5 Webster pl.
 Giles Chas. H., emp. J. B. Lewis, b. 541 Commercial.
 Gill Almer F., sectionman O. C. R. R., h. 23 Pearl.
 Gonsolves Mrs. Manuel, h. 15 Vine.
 Gracia Manuel, fisherman, h. Cottage n. Bradford.
 Grad John F., fisherman, h. Bradford n. Franklin.
 Grad Joseph F., fisherman, h. Bradford c. Franklin.
 Graham John M., teaming and jobbing, Young's ct., h. do.
 Graham Capt. Walter A., yacht Baraconda, h. Young's ct.
 Gross Bartholomew O., selectman, fish inspector, h. 67 Commercial.
 Gross Bartholomew O. Jr., emp. B. O. Gross, h. 67 Commercial.
 Gross Geo. T., rigger, Commercial, h. 103 do.
 Gross Mrs. Julia F., dressmaker, 103 Commercial, h. do.
 Gross Sylvanus S., cigars and confectionery.
 Groves Geo., boat builder, h. head Montello.
 Hall Alfred, fisherman, h. 14 Alden.
 Hall Mrs. Mary A., housekeeper, 85 Commercial.
 Hamilton Salathiel, farmer, h. head Pearl.
 Hamlin Alexander, mason, 123 Commercial, h. do.
 Hamlin Miss Mary E., teacher, h. 123 Commercial.
 Hamlin Mrs. Sarah A., teacher Dean Academy, h. 123 Commercial.
 Hamlin Thomas R., brakeman O. C. R. R., h. Bradford c. Pearl.

- Hammond Wm., ship carpenter, h. Winthrop pl.
 Hammond Wm. H., h. 65 Commercial.
 Hannum Artemas P., sailmaker, h. 145 Commercial.
 Hannum Chas. A., sailmaker, Union wharf, h. 145 Commercial.
 Harding Capt. Robert L., mariner, h. 89 Commercial.
 Harriman John W., 88 years of age, h. 150 Commercial.
 Hartford Mrs. Hattie M., music teacher, 365 Commercial, h. do.
 Harvender Chas., fisherman, h. 14 Alden.
 Harvender Heman, fisherman, h. 15 Alden.
 Harvender Capt. Henry, janitor C. school, h. 10 Alden.
 Harvender Henry Jr., engineer, h. 10 Alden.
 Harvender John C. P., fisherman, h. 18 Franklin.
 Harvender Capt. John P., mariner, h. 28 Franklin.
 Harvender Wm., fisherman, h. 15 Franklin.
 Hassenberg Wm., mariner, b. Capt. D. Allen, Masonic pl.
HATCH Mrs. JOSEPHINE S., dry and fancy goods, 402 Commercial, h. 400 do.
 Hatch Capt. Joseph B., wholesale fish dealer and packer, 400 Commercial.
 Hatch Capt. Luther P., mariner, h. 16 Commercial.
 Hatch Capt. Samuel T., mariner, h. 7 Winthrop.
 Hawes Capt. Thomas E., yacht Frolic, h. 402 Commercial.
 Healey Geo. W., fisherman, h. r. 127 Commercial.
 Healey Wm. H., clerk Central Wharf Co., b. E. Small, Commercial c. Soper.
HEALEY WILLIS C., watches, clocks and jewelry, Adams' block, h. 229 Commercial.
 Hedge Wm. H., carpenter and builder, h. 358 Commercial.
 Henderson Benj. S., surfman U. S. L. S. Station, h. 525 Commercial.
 Henderson James T., hair dresser, h. 321 Commercial.
HERBOLT WM. H., shipsmith and horseshoer, head Steamboat wharf, h. 11 Court.
 Higgins Capt. Benj., mariner, h. 8 Pleasant.
 Higgins Mrs. Betsey, tailoress, h. 369 Commercial.

- Higgins Chas. A., fisherman, h. 7 Center.
HIGGINS JONATHAN, counsellor at law, n. town hall, b. Pilgrim house.
 Higgins Mrs Lucy J., h. 7 Center.
 Higgins Mrs. Philena, emp. shirt factory, h. Bradford c. Montello.
 Higgins Willis, carpenter and builder, 9 Court, b. Mrs. S. P., r. nat'l. bank.
 Hildreth Arthur, teacher, h. 560 Commercial.
 Hill Clarence H., baker, h. Bradford c. Johnson.
 Hill Franklin A., lab. h. 31 Court.
 Hill Geo. C., carpenter and builder, Bradford c. Johnson, h. do.
 Hill John, fisherman, h. r. 18 Pearl.
 Hill Mrs. Susan, h. 340 Commercial.
 Hill Wm. F., fisherman and rigger, h. Hill.
HILLIARD JOHN D., grocer, ship chandler and wholesale fish dealer, Hilliard's wharf, h. 3 Freeman.
 Hilliard Miss Nellie B., teacher, h. 3 Franklin.
 Hilliard Mrs. Sarah, h. Bradford n. town hall.
 Hodgdon Capt. Chas. H., mariner, h. 543 Commercial.
 Hodgdon Mrs. Helena, dressmaker, h. r. 285 Commercial.
 Holbrook Geo. W., conductor O. C. R. R., h. 172 Commercial.
 Holmes Ellis H., painter, h. 4 Cross.
 Holmes Geo. H., pump and block maker, 203 Commercial, h. 229 do.
 Holmes H. Clifford, clerk H. Holmes, h. 13 Pearl.
 Holmes Capt. Hiram, stoves, tinware, etc., 190 Commercial, h. 13 Pearl.
 Holmes James P., fruit, etc., 267 Commercial, h. Bradford c. Winslow.
 Holmes Joseph, fisherman, h. 14 Franklin.
 Holmes Capt. Nathaniel P., h. Commercial, next library.
 Holmes Mrs. Saloma C., h. 55 Commercial.
 Holmes Mrs. Sarah G., h. Commercial, next library.
 Holmes Miss Susie P., music teacher and dressmaker, 13 Pearl, h. do.
 Holway Chas. H., carpenter, h. Prince.

Holway Miss Hannah, milliner, Court opp. Cudworth,
h. do.

Holway Mrs. Hannah G., h. head Center.

Holway John W., watch repairer, h. head Center.

Holway Mrs. Mary J., h. Court opp. Cudworth.

Hooton Joseph H., surfman U. S. L. S. Station No. 8, h.
Commercial n. No. 1 Engine.

HOPKINS CHAS. S., fruit and confectionery,
Commercial, h. Bradford c. Pleasant.

Hopkins Eleazer H., student Amherst, h. Commercial,
E. end.

HOPKINS JAMES HUGHES, counsellor at
law, Gifford's block, b. Central House.

Hopkins Joshua, h. Bradford c. Pleasant.

Hopkins Joshua A., fisherman, h. 5 Conant.

Hopkins Nathaniel, ship R. W. and carpenter, Union
wharf, h. 15 Tremont.

Hopkins Capt. Thos. S., h. Johnson.

Howard Joseph W., h. 9 Central.

HOWES PHILIP R., crockery, fancy goods,
dry goods, etc., 254 Commercial, h. do.

Hudson Nathan S., h. 12 Winthrop.

Hudson Wm. P., dentist, h. Commercial.

HUGHES, HEZEKIAH P., dry and fancy
goods, small wares, etc., Masonic building, h. Brad-
ford c. Winslow.

Hughes Capt. Sylvanus N., mariner, h. Bradford c. Cook.

Hunt C. W., manager Provincetown Boot and Shoe Co.,
356 Commercial, h.

Hurlbert Geo. H., ship carpenter, h. 52 Commercial.

Hutchins Wm., fisherman, h. Bradford c. Montello.

Jacintha Miss Amelia, h. Tailor's ct.

Jacintha Mrs. Joanna, button-hole maker, h. 25 Pearl.

Jacintha John, fisherman, h. 4 Franklin.

Jacintha Manuel, fisherman, h. 9 Conant.

Jacintha Manuel, fisherman, h. 4 Franklin.

Jacobs Mrs. Abbie, 72 years of age, h. 168 Commercial.

Jacinto Estulando, fisherman, h. 442 Commercial.

Jason Antone, fisherman, h. Pleasant.

Jason Mrs. Mary, dressmaker, h. 385 Commercial.

Jenkinson Geo. O., house painter, h. Kiley.

Jennings Chas. A., seaman, h. 399 Commercial.

Jennings Frank, seaman, h. Court junc. Carver.

Jennings Herman A., prop. Gothic Marble Works, corre-
spondent *Cape Cod Item*, h. 399 Commercial.

Johnson Mrs. Betsey, h. 341 Commercial.

Johnson Capt. Chas. E., mariner, h. Bangs.

Johnson Geo. F., mason, R. R. wharf, h. Bradford c.
Masonic pl.

Johnson Capt. Geo. S., whaler, h. Atwood.

Johnson Capt. John, mariner, h. Commercial.

JOHNSON Hon. JOSEPH P., auctioneer,
8 Masonic pl., h. do.

Johnson Mrs. Sadie N., music teacher, Bradford c. Mason-
ic pl., h. do.

Jones Frank, fisherman, h. Kiley.

Jones Manuel, seaman, h. r. 119 Commercial.

Jones Stephen S., fisherman, h. Pleasant c. Montello.

Jordan Mrs. James, h. Pleasant.

Jordan James T., fisherman, h. Pleasant.

Joseph Emelé, fisherman, h. 13 Vine.

Joseph Estline, seaman, h. 119 Commercial.

Joseph Frank, fisherman, h. 4 Franklin.

Joseph Capt. Francis, wholesale fish dealer, h. Bradford,
n. C. school.

Joseph George, shoemaker, Commercial, h. do.

Joseph Mrs. Mary, seamstress, h. Bradford, E. end.

Joseph Mrs. Mary, h. n. the depot.

Joseph William, fisherman, h. 527 Commercial.

Joy Frank A., cutter shirt factory, b. Central house.

Junio Manuel T., fisherman, h. Bradford n. depot.

Kaste Jacob, rigger, h. Soper.

Kelley Benj., fisherman, h. 3 Mechanic.

Kelley Benj. R., fisherman, h. 3 Mechanic.

Kelley Chas. P., keeper U. S. L. S. Station, High Head,
h. Bradford n. Howland.

Kelley Daniel S., grocer, 111 Commercial, h. do.

Kelley James E., fisherman, h. Cornell n. Bradford.

Kelley Levi A., surfman U. S. L. S. Station No. 7, h.
Cornell c. Bradford.

Kelley Levi B., fisherman, h. Cornell c. Bradford.
 Kelley Capt. Reuben O., fisherman, h. 76 Commercial.
 Kempt Capt. Daniel, mariner, h. 445 Commercial.
 Kempt Capt. Murdock, fisherman, h. 325 Commercial.
 Kendall Jessie I., h. 495 Commercial.
 Kendrick Wm. R., emp. S. Knowles' stable, h. 285 Commercial.

KENNEDY ANDREW, mfr. and dealer in furniture, etc., 140 Commercial, h. 119 do.

Kenny Mrs. Tamsey, h. 133 Commercial.

Kenny Wm. H., fisherman, h. 404 Commercial.

KILBURN EDWARD J., fruit, fancy goods, jewelry, etc., 187 Commercial, h. do.

Kilburn Mrs. Harriet P., h. 365 Commercial.

Kiley John, carpenter, h. 403 Commercial.

Kiley John Jr., ship carpenter, h. Kiley.

King Antone, h. Standish.

KING Rev. GEO. C., pastor Centenary M. E. Church, h. 9 Winthrop.

King John, fisherman, h. 16 Alden.

King Joseph, fisherman, h. Prince opp. the church.

King Joseph, fisherman, h. Pleasant.

King Mrs. Mary, h. head Standish.

Kinyon Mrs. Mary, housekeeper S. Mott, Bradford.

Knowles Geo. O., groceries, whaling, etc., 350 Commercial, h. 271 do.

Knowles Mrs. Joseph P., h. 9 Pearl.

Knowles Otis M., clerk Union Fish Co., h. 322 Commercial.

Knowles Mrs. Rachel, h. 7 Vine.

Knowles Mrs. Robert, h. r. 321 Commercial.

KNOWLES SAMUEL, flour, grain, hay, livery, coaches, etc., 276 Commercial, h. r. 285 do.

Laing John W., organ builder and tuner, h. r. 10 Carver.

Lancy Benj., lumber, h. 225 Commercial.

Lancy Henry J., sign painter, h. 146 Commercial.

Lancy Mrs. Nabby, h. 225 Commercial.

Lancy Mrs. Phebe, h. 106 Commercial.

Lavender Mrs. Clara A., dressmaker, 137 Commercial, h. do.

Lavender Capt. Robert M., mariner, h. 355 Commercial.

Lavender Capt. Stephen S., mariner, h. 355 Commercial.

Lavender Mrs. Wm., h. r. Pilgrim house.

Law Mrs. Wm. H., groceries, 361 Commercial, h. 9 Law.

Leach Mrs. Mary D., h. 4 Vine.

Lewis Antone J., fisherman, h. 536 Commercial.

Lewis Bangs A., mariner, h. Bradford n. Atkins.

Lewis Daniel F., pumps and driven wells, 448 Commercial, h. do.

Lewis Geo., fisherman, h. 450 Commercial.

Lewis Geo. H., sailmaker, S. & H. Cooks' wharf, h. 529 Commercial.

Lewis Henry J., fisherman, h. 447 Commercial.

Lewis Isaac B., fisherman, h. 541 Commercial.

Lewis Isaac W., fisherman, h. 551 Commercial.

Lewis James, fisherman, h. 418 Commercial.

Lewis James M., lab. h. n. the cemetery.

Lewis Jesse, fisherman, h. head Conant.

Lewis John, fisherman, h. Standish n. the depot.

Lewis John, fisherman, h. head Conant.

Lewis John A., fisherman, h. 517 Commercial.

Lewis John W., fisherman, h. 450 Commercial.

Lewis Joseph, fisherman, h. Franklin.

Lewis Joseph H., clerk, D. Smith, h. 12 Pleasant.

Lewis Manuel J., fisherman, h. Montello.

Lewis Mrs. Susan G., h. 447 Commercial.

Lewis Thomas, fisherman, h. 517 Commercial.

Lewis Thomas J., fisherman, h. 517 Commercial.

Lewis Willey B., mariner, h. Bradford n. Atkins.

Lima Manuel, seaman, h. r. 119 Commercial.

Lima Mrs. Mary, h. Bradford n. Dyer.

Lint Mrs. Mary, h. r. 538 Bradford.

Little Jonathan H., fisherman, h. Bradford E. end.

Livermore John H., shipsmith, Union wharf, h. 106 Commercial.

Livingston Alexander, surfman, U. S. L. S. Station, No. 8, h. Bradford n. Howland.

Lockwood Mrs. Mary B., h. Franklin.

Logan John T., cooper, h. Winthrop r. Bradford.

Long Mrs. Betsy, h. 144 Commercial.

Long Capt. Chas. H., mariner, h. 5 Mechanic.
 Long Samuel T., fisherman, h. 25 Pleasant.
 Lopes James, emp. str. Longfellow, h. Cornell n. R. R.
 Lopes Thomas J., lab., h. Cornell n. R. R.
 Lorenzo Francisco, fisherman, h. off Standish.
 Loring Chas., ship carpenter, h. 4 Atkins.
 Loring Capt. Edward G., h. 475 Commercial.
 Loring Frank, fisherman, h. Standish.
 Loring Joseph, fisherman, h. 418 Commercial.
 Loring Wm. G., lobsterman, h. 40 Pleasant.
 Lothrop Eben, sailmaker, Central wharf, h. Bradford c.
 Webster pl.
 Lothrop Howard B., freight conductor O. C. R. R., h. 9
 Carver.
 Lothrop Mrs. Rebecca, h. Prince c. Bradford.
 Lovett Amos L., seaman, h. 105 Commercial.
 Lovett John E., fisherman, h. Lovett.
 Low Thomas, keeper Wood End Light.
 Lucus Antone J., seaman, h. Alden last house.
 Lucus Antone P., hairdresser, h. 31 Alden.
 Lucus Mrs. Joanna, h. 31 Alden.
 Lucus John, hairdresser, Commercial c. Carver, h. do.
 Lucus Joseph, fisherman, h. 12 Court.
 Lucus Wm. M., fisherman, h. 11 Pleasant.
 Lurton Jonathan C., calker, h. 8 Conant.
 Lyford Miss Bessie H., teacher, h. 6 Cook.
 Lyford Byley, carpenter and builder, h. 6 Cook.
 Macool Adam, cooper, 192 Commercial, h. Bradford c.
 Masonic pl.
 Macool Mrs. Mary, h. Bradford c. Masonic pl.
 Maddock Lawrence, surfman U. S. L. S. Station, Race
 Point, h. r. national bank.
 Maguil Geo., fisherman, h. 5 Pleasant.
 Maker Chas. W., fisherman, h. 440 Commercial.
 Mandly Capt. Antone J., mariner, h. 226 Commercial.
 Mandly Mrs. Isabelle F., h. 226 Commercial.
 Mandly Miss Annie C., dressmaker, 226 Commercial h. do.
 Manta Joseph, fish maker and wholesale dealer, 180 Com-
 mercial, h. do.
 Manuel Francis, fisherman, h. Prince n. Carver.

Manuel W. Otis, can maker, h. Bradford c. Cook.
 Marcial Alexander C., ship steward, h. r. 319 Commercial.
 Marks Antone, fisherman, h. r. 123 Commercial.
 Marks Joseph, fisherman, h. r. Center school.
 Marks Capt. Manuel, mariner, h. Bradford n. E. school.
 Marshall Albin, fisherman, h. 8 Montello.
 Marshall Antone, fisherman, h. Bradford c. Bangs.
 Marshall Capt. Chas. H., mariner, h. 44 Commercial.
 Marshall Capt. Geo. A., mariner, h. 11 Central.
 Marshall John, fisherman, h. 402 Commercial.
 Marshall John, fisherman, h. Pleasant.
 Marshall Joseph, fisherman, h. head Pleasant.
 Marston Henry W., mariner, h. 13 Central.
 Marston Mrs. Julia, h. 13 Central.
 Marston Leander B., conductor O. C. R. R., h. r. 285 Com-
 mercial.
 Martin Frank, fisherman, b. 15 Central.
 Martin Henry, fisherman, l. Raymos.
 Martin John L., painter, h. 339 Commercial.
 Martin Mrs. Rosa, h. Pleasant.
 Martin Capt. Wm., h. 339 Commercial.
 Mary Joseph, fisherman, h. Pleasant.
 Matheson Alexander J., fisherman, h. 27 Court.
 Matheson Capt. Duncan, mariner, h. Commercial n. Ryder.
MMATHESON DUNCAN A., clothing, boots,
 shoes, furnishings, etc., 304 Commercial, h. 417 do.
 Matheson Duncan S., mariner, h. Commercial n. Ryder.
MMATHESON Miss JESSIE T., dry and
 fancy goods, M. & J. M. 186 Commercial, h. 10
 Conant.
 Matheson Capt. John, mariner, h. 401 Commercial.
 Matheson John A., freight agent, str. Longfellow, h. 10
 Conant.
 Matheson Capt. John A., mariner, Bradford h. r. Univer-
 salist church.
MMATHESON Miss MARY S., music
 teacher, dry goods, etc., M. & J. M. h. 10 Conant.
 Matheson Murdock, emp., Wm. Matheson, h. 10 Conant.
 Matheson Roderick, clerk, b. 417 Commercial.

- Matheson Capt. Wm., wholesale fish dealer, 186 Commercial, h. 10 Conant.
- Matheson Capt. Wm. K., mariner, h. 343 Commercial.
- Matheson Wm. H., seaman, h. Commercial n. Ryder.
- Matthews Joseph, groceries, 124 Commercial, h. do.
- Mayo Capt. Edwin C., mariner, h. 493 Commercial.
- Mayo Mrs. Eliza L., h. 521 Commercial.
- Mayo Mrs. Elizabeth, tailoress, h. 555 Commercial.
- Mayo Herman L., fisherman, h. 521 Commercial.
- Mayo Joseph, fisherman, h. Bradford n. Dyer.
- Mayo Joseph A., fisherman, h. 521 Commercial.
- Mayo Lysander D., fish maker, h. 491 Commercial.
- MAYO Mrs. REBECCA C.**, boots, shoes and rubbers, 121 Commercial, h. 29 Pleasant.
- Mayo Reuben N., fisherman, h. 8 Atkins.
- MAYO RICHARD E.**, depot carriage, teaming, jobbing, etc., 121 Commercial, h. 29 Pleasant.
- Mayo Solomon, h. Bradford n. Dyer.
- Mayo Capt. Thomas, prop. yacht Florence, h. 10 Carver.
- McCann Stephen, seaman, h. 321 Commercial.
- McCarthy Mrs. Enos, h. 11 Mechanic.
- McCarthy James, fisherman, h. Conant.
- McCarthy Wm., fisherman, h. Conant.
- McCurdy Archibald, fisherman, h. 9 Commercial.
- McDonald Capt. Collen, mariner, h. Bradford c. Bangs.
- McDonald Mrs. John, summer boarders, h. 431 Commercial.
- McDonald Capt. Murdock, mariner, h. 432 Commercial.
- McFayden Daniel, bookkeeper, h. 481 Commercial.
- McFayden Capt. John, fisherman, h. 481 Commercial.
- McInnis John W., fisherman, h. Commercial, W. end.
- McIntosh John, teamster, h. Bradford c. Law.
- McIntosh Capt. Roderick, mariner, h. Webster pl.
- McIntire Capt. John, mariner, h. 7 Winslow.
- McIntire Miss Lizzie K., dressmaker, r. 413 Commercial, h. do.
- McKay Capt. Angus, mariner, h. 269 Commercial.
- McKay Mrs. Annie, boarding house, h. r. 227 Commercial.
- McKay Capt. Eli, mariner, h. 273 Commercial.

- McKay Daniel M., foreman D. A. Smith's tailoring rooms, b. 269 Commercial.
- McKennon Capt. Alexander, mariner, h. r. national bank.
- McKennon Annie W., music teacher, h. r. national bank.
- McKenzie Alexander, painter, h. off Bradford, opp. Gifford house.
- McKenzie Capt. John, mariner, h. 223 Commercial.
- McKenzie Capt. Norman, mariner, h. Kiley.
- McLane Alexander, mariner, h. 383 Commercial.
- McLeod Alexander, fisherman, h. 406 Commercial.
- McLeod Capt. Allen, mariner, h. Bradford c. Bangs.
- McLeod Capt. John, mariner, h. Bradford n. Bangs.
- McPhie Capt. Malcom, mariner, h. 413½ Commercial.
- McPhie Mrs. Mary, boarding house h. 345 Commercial.
- McRay Capt. Christopher, mariner, b. Mrs. Annie McKay.
- McRea Edward D. R., h. Bradford.
- McRitchie Daniel, fisherman, h. Young's ct.
- McQuillan Patrick, lab., h. Creek road c. Mechanic.
- McQuirre Alexander, ship carpenter, h. 421 Commercial.
- Mede Manuel, fisherman, h. 3 Court.
- Mediros Manuel, fisherman, h. r. 119 Commercial.
- MILLER FRANCIS C.**, groceries and provisions, 76 Commercial, h. 77 do.
- Miller Francis S., clerk J. K. Small, h. 76 Commercial.
- Miller Geo. H., clerk D. H. Dyer & Co., h. 77 Commercial.
- Mitchell Miss Addie S., teacher, h. Johnson.
- MITCHELL AUGUSTUS**, watchmaker and jeweler, fancy goods, etc., A. L. Putnam & Co., Masonic building, h. Johnson.
- Mitchell Wm. R., clerk savings bank, h. Johnson.
- Moore John B., fisherman, h. 17 Commercial.
- Morgan Lewis P., fisherman, h. Bradford opp. Atkins.
- Morgan Moses C., supt. Picket's canning factory, b. Pilgrim house.
- Morgan Mrs. Rebecca, h. Bradford opp. Atkins.
- Morrell Antone, fisherman, h. 12 Court.
- Morrell Mrs. Charles, h. Bradford c. Law.
- Morrell John E., fisherman, h. off Pleasant.
- Morrell Joseph, seaman, h. Franklin.

- Morrell Peter, lab., h. Franklin.
 Morrell Peter, Jr., seaman, h. Franklin.
 Morris Mrs. Hannah J., h. 5 Kilburn.
 Morris Joseph, fisherman, h. Bradford c. Cross.
 Morris Joseph M., seaman, h. Cornell n. R. R.
 Morris Manuel, fisherman, h. Bangs.
 Morris Peter, fisherman, h. Cornell n. R. R.
 Mott Atwood, calker, Union wharf, h. Winthrop pl.
 Mott John, fisherman, h. 485 Commercial.
 Mott Manuel, fisherman, h. 485 Commercial.
MOTT SILAS C., prop. Provincetown hat store, furnishings, etc., 319 Commercial, h. r. do.
 Mott Stephen, graver and calker, h. Bradford r. Cong. church.
 Mullen Thomas V., keeper Race Point Light.
 Mumby Robert, mariner, b. L. J. Rambos.
 Myrick John W., hairdresser, h. 406 Commercial.
 Nason Mrs. Ellen S., h. Johnson.
 Naugler Miss Ann, h. Center n. R. R.
 Nelson Frank, fisherman, b. 538 Bradford.
 Newcomb Alexander W., fisherman, h. 45 Commercial.
 Newcomb Elisha S., emp. S. T. Nickerson, h. 54 Commercial.
 Newcomb John, fisherman, h. Tremont c. Soper.
 Newcomb Jonah, fisherman, h. 31 Pleasant.
 Newcomb Mrs. Martha J., dressmaker, 1 Sparrow, h. do.
 Newcomb Moses P., seaman, h. 34 Pearl.
 Newcomb Robert M., fisherman, h. 11 Court.
 Newcomb Capt. Samuel F., fisherman, h. 2 Sparrow.
 Newcomb Capt. Thomas C., mariner, h. 4 Tremont.
 Newcomb Wm., h. 45 Commercial.
 Newcomb Wm. H., emp. S. T. & L. Nickerson, h. 1 Sparrow.
NEWTON ADIN H., M. D., M. M. M. S., physician and surgeon, 227 Commercial, h. do.
NEWTON Prof. ADIN H., Jr., musician, 227 Commercial, h. do.
NEWTON E. CAZNEAU, medical student, 227 Commercial, h. do.

- NEWTON FRANK L., M. D.**, student in Europe, h. 227 Commercial.
 Newton H. Heustis, A. B., princ. Wellfleet high school, h. 227 Commercial.
NEWTON Miss NETTIE, music teacher, 227 Commercial, h. do.
NEWTON WM. M., student Dartmouth, h. 227 Commercial.
 Nichols Joseph, lab., h. Pleasant.
 Nickerson Addison, emp. J. Paine, h. 91 Commercial.
 Nickerson Capt. Atkins, trustee S. S. bank, director E. M. Ins. Co., h. 23 Commercial.
 Nickerson Bart, fisherman, h. Bradford c. Carver.
 Nickerson Mrs. Caleb, h. 155 Commercial.
 Nickerson Chas., h. 147 Commercial.
 Nickerson Mrs. Delia A., h. Soper.
 Nickerson Edward, shoemaker, Commercial.
 Nickerson Capt. Elisha, h. 150 Commercial.
 Nickerson Miss Ellen C., dressmaker, 147 Commercial, h. do.
 Nickerson Miss Emma C., cloakmaker, 147 Commercial, h. do.
 Nickerson Miss Eunice S., small wares, 216 Commercial, h. 213 do.
 Nickerson Capt. Enoch, h. Nickerson pl.
NICKERSON GEO. H., photo. and portrait artist, n. post office, h. Johnson.
 Nickerson Henry P., clerk P. O., h. 5 Cross.
 Nickerson Jesse, mariner, h. 168 Commercial.
 Nickerson Mrs. Joshua, h. 31 Court.
 Nickerson Joshua, h. Tremont c. Vine.
 Nickerson Josiah, surfman U. S. L. S. Station, High Head, h. 47 Commercial.
 Nickerson Capt. Joshua S., str. A. B. N., h. Tremont c. Vine.
 Nickerson Lem F., milk dealer, h. Bradford c. Carver.
NICKERSON LEWIS, fire and marine ins., 83 Commercial, h. Dyer.
 Nickerson Mrs. Louisa, tailoress, h. 229 Commercial.

Nickerson Luther, fish maker and wholesale dealer (S. T. & L. N.), h. 37 Commercial.

Nickerson Luther C., agt. S. T. & L. N., h. 25 Commercial.

Nickerson Mrs. Mary S., h. 5 Cross.

Nickerson Capt. Nehemiah, h. 16 Winthrop.

NICKERSON REUBEN, prop. N.'s monumental studio, 272 Commercial, h. Cross n. wind pump.

Nickerson Seth, fisherman, h. Commercial.

Nickerson Capt. Silas, prop. yacht Henrietta, h. Commercial.

Nickerson Solomon D., carpenter, h. Soper.

Nickerson Mrs. Stephen, h. 39 Commercial.

Nickerson Stephen T., fish maker and dealer (S. T. & L. N.), h. 41 Commercial.

Nickerson Mrs. Surmentha, h. Carver c. Cudworth.

Nickerson Theodore S., marble worker, h. Cross n. wind pump.

Nickerson Thomas W., marble worker, h. Cross n. wind pump.

Nickerson Wm., engineer O. C. R. R., h. r. 321 Commercial.

Nickerson Wm. K., provisions, h. Bradford c. Carver.

Nixon Lewis, cutter shirt factory, b. Chapman house.

Nunes Antone, fisherman, h. 17 Pearl.

Nunes Mrs. Mary, h. 12 Court.

O'Connors Walter, h. 3 Court.

O'Donnell Capt. John, mariner, h. 8 School.

O'Donnell Michael, seaman, h. 8 School.

O'Donnell Wm., fisherman, h. Franklin.

O'Niel Geo. R., fisherman, h. Commercial c. Pleasant.

O'Niel John J., fisherman, h. Tremont c. Soper.

ORBON Miss ANNIE V., music teacher, 10 Court, h. do.

Osgood Rev. Geo. W., pastor Cong'l. Church, h. 19 Tremont.

Paine Edwin N., clerk, h. 120 Commercial.

Paine Mrs. Elizabeth, h. 7 Court.

Paine Francis A., sailmaker, h. 7 Cottage.

Paine Capt. James C., h. 260 Commercial.

Paine Joshua, merchant, J. & L. N. P., h. Tremont c. Cottage.

PAINE JOSHUA Jr., mfg. boxes and dealer in lumber, etc., Commercial c. Franklin, h. 17 Tremont.

Paine Mrs. Louisa C., music teacher, 260 Commercial, h. do.

PAINE Miss LUCY A., milliner, 256 Commercial, h. 260 do.

Paine Mrs. Lucy J., h. 179 Commercial.

Paine Lysander N., merchant, J. & L. N. P., h. 89 Commercial.

Paine Mrs. Sally, h. 14 Alden.

Paine Mrs. Sarah, summer boarders, h. r. national bank.

Paine Mrs. Dr. Stephen, h. 319 Commercial.

Paine Capt. Thomas, mariner, h. 148 Commercial.

Paine Thomas K., agt. Eastern Weir Co., h. 513 Commercial.

Parker Michael A., woodsawyer, h. Prince.

Pascall Mrs. Rebecca, h. Bradford c. Pearl.

Patrick Augustine, fisherman, h. off Pleasant.

Patrick John, fisherman, h. Montello.

Patrick Joseph, fisherman, h. Bradford c. Cottage.

Patterson Capt. Frederick A., mariner, h. 227 Commercial.

Peach Geo. S., fisherman, h. Commercial c. Atkins.

Peck Eugene C., physician, 19 Tremont, h. do.

Peck Mrs. Jonathan J., h. 19 Tremont.

Peirze Henry F. 2d, lab., h. Cornell n. R. R.

Peirze John, sexton cemetery, h. Cornell n. R. R.

Pennock Mrs. Sarah, nurse, h. Bradford n. Pleasant.

Pereira Antone, fisherman, h. 6 Franklin.

Pereira John, fisherman, h. 4 Franklin.

Pereira Manuel, fisherman, h. 334 Commercial.

Pereira M. C., h. r. 338 Commercial.

Pereira Sauge, fisherman, h. r. 119 Commercial.

Perkins Capt. Hollis, mariner, h. 6 Atkins.

Perrie Frank, fisherman, h. Bradford c. Cross.

Perry Antone, fisherman, h. 25 Court.

Perry Cody, fisherman, h. Creek road.

PERRY MANUEL, custom shoemaker, fruit, etc.,
300 Commercial, h. Standish.

Perry Manuel, fisherman, h. Pleasant.

Perry Manuel, fisherman, h. Bradford c. Bangs.

Perry Joseph, fisherman, h. Bradford n. East school.

Perry Joseph, fisherman, h. 509 Commercial.

Perry Joseph, fisherman, h. Bradford c. Mechanic.

Perry Joseph S., fisherman, h. 11 Vine.

Peter Enos, seaman, h. 38 Pearl.

Pettes Geo. W., sailmaker, Hilliard's wharf, h. 279 Commercial.

Pettes Samuel, h. r. 119 Commercial.

Pierce Mrs. Henry F., h. 36 Pearl.

Pierce Jeremiah, fisherman, h. 11 Pleasant.

Pierce John, h. Bradford n. Atkins.

Pierce Joshua R., seaman, h. 11 Pleasant.

Pierce Mrs. Louise, h. 21 Pearl.

Pierce Wm. H., emp. Knowles' stable, h. 11 Pleasant.

Piggeon John, ship carpenter, h. 393 Commercial.

Pinckney Mrs. Joseph, boarding house, 495 Commercial.

Pinckney Capt. Joseph, lab., h. 395 Commercial.

Pinckney Lewis, fireman O. C. R. R., h. Bradford n. Howland.

Powe Wm., seaman, h. 144 Commercial.

Powe Wm. C., seaman, h. 144 Commercial.

Powers Mrs. Julia, h. head Franklin.

Pradd Manuel, fisherman, h. 33 Court.

Pratt Mrs. Hannah B., h. 34 Pearl.

Pratt James F., fisherman, h. 34 Pearl.

PUTNAM A. LOUIS, jewelry, stationery, etc.,
A. L. P. & Co., Masonic building, h. 437 Commercial.

Quinn Jeremiah, tailor, h. 93 Commercial.

Quinn Waterman C., fisherman, h. 397 Commercial.

Rabbett Joseph, fisherman, h. Montello.

Ramos Lewis J., fisherman, h. Creek road.

Ramsey Wm. S., fisherman, b. G. S. Peach, Commercial.

Rand James G., fisherman, h. 360 Commercial.

Randal Geo., fisherman, h. Brown.

Raymand Frank, fisherman, h. 299 Commercial.

Reader Geo. W., seaman, h. n. the cemetery.

Reed Mrs. Eliza A., h. Central house.

REED JAMES A., manager Central house,
234 Commercial.

Reed Marshall L., emp. S. Bangs, h. 475 Commercial.

Rich Abner B., fish, groceries, and Central Wharf Co.,
163 Commercial.

Rich Capt. Allen W., mariner, h. Bradford opp. town hall.

Rich Arthur L., fisherman, h. Kiley.

Rich Mrs. Barbara, h. Young's ct.

Rich Capt. Caleb L., mariner, h. Bradford c. Johnson.

Rich David, fisherman, h. 337 Commercial.

Rich Capt. Elisha, mariner, h. 405 Commercial.

Rich Mrs. Hannah S., h. 399 Commercial.

Rich Isaiah T., salesman, 719 Tremont, Boston, h. 368 Commercial.

Rich James, groceries and provisions, J. R. & Co., Central blk., h. 401 Commercial.

Rich James A., groceries and provisions, J. R. & Co.,
h. 250 Commercial.

Rich Capt. James E., mariner, h. 8 Court.

Rich Jeremiah A., groceries, h. 37 Pearl.

Rich Capt. John B., mariner, h. Bradford opp. town hall.

RICH JOHN L., boots, shoes, gent's furnishings,
etc., 196 Commercial, h. 67 do.

Rich Lombard, farmer, h. 37 Pearl.

Rich Miss Mary A., asst. librarian, h. 8 Court.

Rich Mrs. Mary R., dressmaker, h. 337 Commercial.

Rich Obadiah S., lab., h. Bradford n. Pearl.

Rich Perez B., sailmaker, h. 381 Commercial.

Rich Reuben, mariner, h. head Franklin.

Rich Capt. Samuel, h. 405 Commercial.

Rich Mrs. Sophronia B., h. Commercial n. No. 1 Engine.

Rich S. James, dry goods, Central blk., h. 6 Center.

Rich Solomon B., fish, U. F. Co., R. R. wharf, h. Commercial c. Standish.

Rich Sylvanus, fisherman, h. Johnson.

Rich Capt. Xenophon, mariner, h. 7 Law.

Rich Zaccheus, house painter, h. 368 Commercial.

Rich Capt. Zephaniah, seaman, h. Lovett.

Rich Zephaniah T., seaman, h. Lovett.
 Rich Mrs. —, h. 399 Commercial.
 Richardson Mrs. Ann, h. Dyer.
 Roberts Edward, emp. Union Fish Co., h. 5 Standish.
 Roberts James C., fisherman, h. r. 123 Commercial.
 Roberts John, fisherman, h. head Conant.
 Roberts Capt. Wm., mariner, h. 5 Standish.
 Robinson Wm., seaman, h. 9 Standish.
 Roderick John, fisherman, h. Pleasant,
 Roderick Joseph, fisherman, h. Pleasant.
 Roderick L. Frank, fisherman, h. head Standish.
 Roderiques John J., fisherman, h. Cornell, last house.
 Roderiques Manuel, fisherman, h. 9 Conant.
 Rogers Augustus, seaman, h. 6 Central.
 Rogers Chas. P., emp. J. D. Hilliard, h. r. Pilgrim house.
 Rogers Frank, fisherman, h. 105 Commercial.
 Rogers Frank, fisherman, h. Cornell.
 Rogers Jackson, fisherman, h. Prince c. Cudworth.
 Rogers Jesse, fisherman, h. 12 Montello.
 Rogers Jesse, carpenter and builder, h. Prince n. Church.
 Rogers Jesse Jr., carpenter, h. Prince n. Church.
 Rogers Jesse D., fisherman, h. Bradford c. Mechanic.
 Rogers Joseph, fisherman, h. Montello.
 Rogers Joseph F., lab., h. Cornell n. R. R.
 Rogers Joseph F. Jr., fisherman, h. 316 Commercial.
 Rogers Manuel, grocer, 175 Commercial, h. do.
 Rogers Manuel, sailor, h. 336 Commercial.
 Rogers Manuel, fisherman, h. Conant c. Bradford.
 Rogers Mrs. Mary, h. Montello.
 Rogers Needham, fisherman, h. Tremont c. Mechanic.
 Rogers Wm. E., seaman, h. 175 Commercial.
 Rollins Capt. Antone J., mariner, h. Bangs.
 Rollins John, fisherman, h. 492 Commercial.
 Rosa Capt. Antone, mariner, h. 9 Standish.
 Rosa Manuel, fisherman, h. 12 Alden.
 Rosa Mrs. Ritta, h. Bradford n. Dyer.
 Rosenthal John, retired ordnance sergeant U. S. Army, h. 113 Commercial.
 Ryan Mrs. Margaret, h. 93 Commercial.
 Ryder Mrs. A. Maria, small wares, 322 Commercial, h. do.

Ryder Miss Clara A., teacher, h. 7 Center.
 Ryder Capt. David, police, agt. Province land, h. 10 Court.
 Ryder Capt. Elijah T., mariner, h. 13 Commercial.
 Ryder Capt. Ephriam, commission merchant, h. 303 Commercial.
 Ryder James N., carpenter and builder, 10 Court, h. do.
 Ryder John S., marine artist, 22 School, Boston, h. r. 78 Commercial (in summer).
 Ryder Reuben, fisherman, h. 400 Commercial.
 Ryder Capt. Richard, mariner, h. 111 Commercial.
 Ryder Thomas, h. r. 78 Commercial.
 Ryder Thomas L., seaman, h. 400 Commercial.
 Santos Antone fisherman, h. r. 65 Commercial.
 Santos Joseph, fisherman, h. Pleasant.
 Sawyer Mrs. Clara J., music teacher and artist, h. 361 Commercial.
 Sawyer Rev. Royal T., pastor Universalist Church, h. 361 Commercial.
 Sayward Walter F., teacher, b. Central house.
 Sears Edwin, fisherman, h. Kiley.
 Sears Mrs. Hannah, h. Bradford.
 Sears Joseph, seaman, h. 105 Commercial.
 Sears Joseph W., fisherman, h. 561 Commercial.
 Sears Joseph W., fisherman, h. 474 Commercial.
 Sears Manuel, fisherman, h. 561 Commercial.
 Sences Joseph, fisherman, h. 7 School.
 Sereigo Capt. Bernard, fisherman, h. 164 Commercial.
 Settes Joseph H., fisherman, h. off Pleasant.
 Settes Wm. H., lab., h. off Pleasant.
 Sherman Richard, foreman Swift's canning factory, b. 495 Commercial.
 Shortle Henry, customs officer, h. Bradford c. Ryder.
 Silva Mrs. Anna, h. 384 Commercial.
 Silva Antone, fisherman, h. Bradford, E. end.
 Silva Antone fisherman, h. r. 119 Commercial.
 Silva Antone 2d, fisherman, h. Alden n. Bradford.
 Silva Antone F., cigars, tobacco, etc., 198 Commercial, h. do.
 Silva Antone J., fisherman, h. Pleasant c. Montello.
 Silva Mrs. Antonietta, h. Pleasant c. Montello.

- Silva Boniface, fisherman, h. John.
 Silva Frank, h. Bradford, E. end.
 Silva Frank, mariner, h. 65 Commercial.
 Silva Frank, fisherman, h. Bradford c. Center.
 Silva Frank, seaman, b. 12 Court.
 Silva Frank, fisherman, h. Tremont c. Mechanic.
 Silva Frank, fisherman, h. Bradford c. Cross.
 Silva Frank M., fisherman, h. head Nickerson pl.
 Silva Jackson, fisherman, h. Cottage n. Bradford.
 Silva Jason, fisherman, h. Bradford c. Pleasant.
 Silva John, seaman, h. Cornell n. Bradford.
 Silva John C., fisherman, b. J. Cook.
 Silva Capt. John, mariner, h. head Tremont.
 Silva Joseph, fisherman, h. Conant n. Bradford.
 Silva Joseph, fisherman, h. Bradford c. Montello.
 Silva Joseph, fisherman, h. 12 Alden.
 Silva Joseph, fisherman, h. Kilburn ct.
 Silva Joseph A., fisherman, h. Turner.
 Silva Joseph F., fisherman, h. r. West school.
 Silva Joseph M., deck hand str. Longfellow, h. Prince.
 Silva Capt. Joseph S., fisherman, h. Standish.
 Silva Mrs. Luring, h. Standish n. depot.
 Silva Lysander, fisherman, h. 496 Commercial.
 Silva Manuel, fisherman, h. 490 Commercial.
 Silva Manuel, fisherman, h. 485 Commercial.
 Silva Manuel 2d, fisherman, h. 507 Commercial.
 Silva Manuel T., fisherman, h. r. 27 Franklin.
 Silva Manuel F., fisherman, h. 12 Montello.
 Silva Manuel R., fisherman, h. 25 Court.
 Silva Mrs. Margaret, emp. shirt factory, h. 5 Alden.
 Silva Martin, fisherman, h. 6 Franklin.
 Silva Mrs. Mary J., charwoman, h. Court junc. Carver.
 Simmons Joseph, fisherman, h. Kilburn ct.
S **SMALL ALEXANDER G.**, groceries and provisions, 66 Commercial, h. 61 do.
 Small Alfred, carpenter and builder, h. Bradford opp. C. school.
 Small Mrs. Augustus P., h. 51 Commercial.
S **SMALL AYLMEY F.**, merchant tailor, gent's furnishings, etc., 301 Commercial, h. do.

- Small Benj. h. 4 Vine.
 Small Daniel A., broker, h. Bradford c. Pearl.
 Small D. Frank, merchant, Boston, h. r. 285 Commercial.
 Small Miss Edith, teacher, h. 3 Gosnold.
 Small Miss Ella A., teacher, h. 51 Commercial.
 Small Everett, fisherman, h. 65 Commercial.
 Small Heman, fisherman, h. Bradford c. Conant.
S **SMALL IRA K.**, groceries and commission goods, 201 Commercial, h. Bradford n. Gifford house.
 Small Isaac, fisherman, h. Pleasant n. Brown.
 Small Isaiah A., blacksmith, Central wharf, h. 275 Commercial.
 Small James A., fish, groceries, etc., Central Wharf Co., b. P. Crocker, Bradford.
 Small James H., teamster S. S. Swift, h. Bradford n. Howland.
 Small John, h. 9 and 11 Commercial (in summer).
 Small Capt. John W., mariner, h. r. 319 Commercial.
 Small Mrs. Jonah, emp. shirt factory, h. 25 Pleasant.
S **SMALL JOSHUA T.**, baker, dealer in paper and bags, 244 Commercial, h. 275 do.
 Small Josiah F., tailor, 228 Commercial, h. 3 Gosnold.
 Small Mrs. Linnie F., h. 7 Center.
 Small Lot, h. Pleasant.
 Small Capt. Lot H., fisherman, h. 136 Commercial.
 Small Nathaniel H., house painter, h. Pleasant c. Brown.
 Small Mrs. Rachel S., h. r. 319 Commercial.
 Small Mrs. Ruth E., h. 7 Center.
 Small Capt. Samuel, mariner, h. Pleasant.
 Small Mrs. Sarah C., h. Commercial c. Standish.
 Small Mrs. Uriah, h. Bradford.
 Smith Mrs. Amanda M., h. Bradford n. *Advocate* office.
S **SMITH AMASA**, clothing and gent's furnishings, opp. Nat'l. Bank, h. 241 Commercial.
 Smith Amasa T., h. Bradford n. *Advocate* office.
 Smith Benj. F., express messenger, h. Bradford n. depot.
 Smith Miss Clara L., teacher, h. 8 Commercial.
S **SMITH DAVID**, hay, grain, flour, groceries, etc., 136 Commercial, h. 12 Pleasant.
 Smith David 2d. lab., h. 8 Pleasant.

SMITH DAVID A., tailor and draper, opposite town hall, Commercial, h. Bradford c. Court.

Smith Daniel B., mate str. Longfellow, h. Bradford c. Center.

Smith David C., lab., h. off Prince.

Smith David D., dry and fancy goods, opp. town hall, Commercial, h. Bradford c. Court.

Smith Capt. David L., fisherman, h. Bradford n. Conant.

Smith Edwin, house painter, h. Pleasant c. Brown.

Smith Capt. Edwin W., mariner, h. 5 Law.

Smith Mrs. Eliza, h. 9 Nickerson.

Smith Miss Emily F., teacher, h. Bradford c. Court.

Smith Mrs. Eunice B., h. 12 Standish.

SMITH FRANCIS P., prop. Atlantic house, Masonic pl.

Smith Franklin N., painter, h. 16 Carver.

Smith Fred W., clerk D. Smith, h. 10 Pleasant.

Smith Freeman A., sexton Centenary Church, h. 20 Central.

Smith Capt. Gamaliel, h. 527 Commercial.

Smith Geo., emp. O. C. R. R., h. Bradford.

Smith Geo. O., seaman, h. 107 Commercial.

Smith Heman, keeper Long Point Light.

Smith Capt. Heman F., mariner, Center.

Smith Herman F., keeper Long Point Light.

Smith Herman N., fisherman, h. 79 Commercial.

Smith H. Merrill, painter and dealer in paints, 136 Commercial, h. 153 do.

Smith Isadore, fisherman, h. Bradford c. Cottage.

Smith Isaac E., fisherman, h. 501 Commercial.

Smith James, gardner, h. Brown.

Smith James H., clerk D. D. Smith, h. 8 Court.

Smith Jerome S., farmer and milkman, h. Winthrop pl.

Smith Jesse, seaman, h. Pleasant c. Brown.

Smith Capt. John, master str. Longfellow, h. Bradford c. Center.

Smith John S., seaman, h. Pleasant.

Smith Jonathan D., fisherman, h. 8 Commercial.

Smith Joseph A., fisherman, h. 501 Commercial.

Smith Capt. Joseph C., mariner, h. 6 Conant.

Smith Joseph H., sexton M. E. church, h. Webster pl.

Smith Joshua, h. Bradford c. Cornell.

Smith Mrs. Louisa D., h. r. 336 Commercial.

Smith Mrs. Lydia, h. head Montello.

Smith Mrs. Lucinda, h. 4 Pleasant.

Smith Manuel E., custom shoemaker, E. end. h. head Tremont.

Smith Mrs. Mary, h. 27 Pearl.

Smith Nathan, lab., h. head Franklin.

Smith Miss Nellie F., dressmaker, 8 Commercial, h. do.

Smith Mrs. Rebecca, h. 8 Court.

Smith Richard F., fisherman, h. 4 Carver.

Smith Samuel S. Jr., baggage express, h. 27 Carver.

Smith Samuel L., mariner, h. head Center.

SMITH SAMUEL S., prop. Pilgrim house, 315 Central.

Smith Seth, town clerk and treasurer, h. 115 Commercial.

Smith Simeon C., h. 145 Commercial.

Smith Wm. A., seaman, h. 300 Commercial.

SMITH WM. M., photo. and crayon artist, opp. nat'l bank, h. 341 Commercial.

Smith Wm. W., boat builder, opp. W. M. E. Church, h. 341 Commercial.

Snow Atkins D., fisherman, h. 531 Commercial.

SNOW CHAS. B., carpets, musical instruments, crockery, etc., 232 Commercial, h. Bradford.

Snow Emanuel, mariner, h. Pleasant, last house.

SNOW E. OLIN, musical mdse., sewing machines, carpets, etc., O. S. & Son, h. 5 Kilburn ct.

Snow Hiram, depot carriage, 104 Commercial, h. do.

Snow Mrs. Jane, baker, 104 Commercial, h. do.

Snow Jonathan F., clerk str. Longfellow, h. 360 Commercial.

Snow Joseph W., carpenter, h. 527 Commercial.

Snow Josiah, carpenter and builder, b. Pilgrim house.

SNOW OBADIAH, musical mdse., sewing machines, carpets, crockery, etc., O. S. & Son, 250 Commercial, h. 5 Kilburn ct.

Snow Capt. Seth P., mariner, h. 31 Carver.

Snow Tilden A., fisherman, h. 531 Commercial.

- Snow Woodbridge C., shipsmith, h. 501 Commercial.
 Souza Antone, fisherman, h. Soper, last house.
 Souza Antone, fisherman, h. Cottage n. Bradford.
 Souza Bartaemew, fisherman, h. Cottage n. Bradford.
 Souza Joseph, fisherman, h. Creek road.
 Souza Joseph, fisherman, h. Cottage n. Bradford.
 Souza Joseph, Jr., fisherman, b. Jackson Silva.
 Souza Manuel, fisherman, h. Cornell.
 Souza Manuel, fisherman, h. Standish opp. depot.
 Souza Peter, fisherman, h. Cottage n. Bradford.
 Sparks Miss Abbie C., teacher, h. 363 Commercial.
 Sparks Miss Angie E., teacher, h. Dyer.
 Sparks Capt. Benj. F., mariner, h. Dyer.
 Sparks Mrs. Chloe, h. 363 Commercial.
 Sparks Capt. David, groceries (Sparks & Dyer), 344 Commercial, h. 351 do.
 Sparks Geo. Q., fisherman, h. Dyer.
 Sparks Heman, fisherman, h. Dyer.
 Sparks Heman C., fisherman, h. Dyer.
 Sparks Capt. James T., mariner, h. 9 Carver.
 Sparks Miss Rebecca D., teacher, h. 351 Commercial.
 Sparks Thomas, h. Dyer.
 Sparks Thomas W., groceries and provisions, 344 Commercial, h. 320 do.
 Sparrow Harvey O., stoves, tinware, etc., 167 Commercial, h. 130 do.
 Sparrow Harvey O., Jr., com. trav., h. 130 Commercial.
 Sparrow Capt. Jonathan, fisherman, h. 6 Sparrow.
 Sparrow Robert H., fisherman, h. 7 Commercial.
 Sparrow Capt. Wm. C., mariner, h. 55 Commercial.
 Sprague Chas. H., lab., h. Standish.
 Sprague Wm. H., clam digger and dealer, h. 15 Alden.
 Sprague Wm. W., teamster, h. 15 Alden.
 Soper Mrs. Evlina M., h. 55 Commercial.
 Soper Mrs. Robert C., h. Prince c. Bradford.
 Stacy M. Leland, compositor *Advocate* office, b. 272 Commercial.
 Stafford Mrs. Mehitable H., 84 years of age, b. 176 Commercial.
 Standish Geo., ship carpenter, h. Johnson.

- Starr Edward T., fisherman (Pine Tree Weir Co.), h. 42 Commercial.
 Stone John, h. Bradford, E. end.
 Strachauer Hermann, professor of harmony and musical composer, h. 2 Commercial.
 Stull David C., emp. Pickets' factory, h. Bradford c. Center.
 Stull Geo. P., sailmaker, h. Cornell n. R. R.
 Sullivan Mrs. Anna, h. Pleasant.
 Sullivan James H., seaman, h. Commercial n. E. school.
 Sullivan Mrs. Margaret, h. Pleasant.
 Sullivan Michael W., fisherman, h. Pleasant.
 Sumner Enoch N., h. Bradford n. Center school.
SUMNER JOSIAH T., fruit, confectionery, cigars, etc., n. P. O., h. 256 Commercial.
 Sweeney Edward, fisherman, h. 8 Franklin.
 Swett Antone, fisherman, h. head Tremont.
 Swett Antone, fisherman, h. Conant n. Bradford.
 Swett Jerome, fisherman, h. head Tremont.
 Swett Joseph, fisherman, h. Bradford n. Mechanic.
 Swett Manuel, fisherman, h. Bradford c. Pleasant.
 Swezer Joseph, fisherman, h. 22 Central.
 Swift Edgar W., clerk, h. Bradford c. Pearl.
 Swift Frank M., postal clerk O. C. R. R., h. 142 Commercial.
 Swift Capt. John, fisherman, h. 539 Commercial.
 Swift John N., clerk, h. 509 Commercial.
 Swift Josiah, junk, crockery, etc., h. Bradford c. Pearl.
 Swift Capt. Reuben, fisherman, h. 537 Commercial.
SWIFT REUBEN W., asst. cashier national bank, ins., J. P., Notary Public, etc., h. Bradford n. Pearl.
 Swift Samuel S., mfr. prepared fish, etc., Swift's wharf, h. Bradford c. Howland.
 Talon Patrick, fisherman, h. Bradford c. Cottage.
 Talon Victor, fisherman, h. 25 Court.
 Tarrant Richard G., seine repairer, 46 Commercial, h. 19 do.
 Taryis Frank, seaman, h. 27 Franklin.
 Taryis Jesse, fisherman, h. 15 Central.

Tarvis Joseph, fisherman, h. r. 123 Commercial.
 Tarvis Capt. Manuel, mariner, h. 20 Court.
 Tarvis Manuel, ship carpenter, h. Bradford n. Cottage.
 Tarvis John, fisherman, h. 15 Central.
 Tavares Antone, fisherman, h. 8 Franklin.
 Taves John, fisherman, h. Cottage n. Bradford.
 Taylor Abiel C., blacksmith, b. E. E. Emery.
 Taylor Albert F., seaman, h. Bradford n. depot.
 Taylor Amasa, blacksmith, r. P. O., h. Bradford n. depot.
 Taylor Capt. Chas., h. Center.
 Taylor Chas. N., seaman, h. Center c. Bradford.
 Taylor Mrs. Elisha N., h. Bradford n. depot.
 Taylor Mrs. Marietta, h. 336 Commercial.
 Taylor Samuel, h. Mechanic.
 Taylor Capt. Thomas, mariner, h. 12 Center.
 Thomas Antone, fisherman, h. Taylor's ct.
 Thomas Antone J., fisherman, h. Standish n. depot.
 Thomas Frank, fisherman, h. 338 Commercial.
 Thomas Joseph, seaman, h. 8 Carver.
 Thomas Manuel, fisherman, h. Bradford n. Dyer.
 Thomas Miss Mary, h. head Standish.
 Tillson Elisha H., painter, h. 281 Commercial.
 Tovers John, fisherman, h. 10 Montello.
 Tracy James, lab., h. r. 336 Commercial.
 Tuck Mrs. Lydia S., h. Nickerson pl.
 Tupper Mrs. Martha, h. 148 Commercial.
 Turner Barney A., town crier, h. Turner.
 Turner Mrs. Deborah P., h. 413 Commercial.
 Turner Ebenezer, lab., h. Turner.
TURNER ISAIAH, custom shoemaker and dealer in boots, shoes and rubbers, 413 Commercial, h. do.
 Turner Moses S., provisions, teaming and jobbing, 5 Cornell, h. do.
 Tuttle Geo., lab., h. Cornell n. R. R.
 Tyler Isaac, fisherman, h. Cottage.
 Valard Jacintha, fisherman, h. Standish.
 Valentine Manuel, fisherman, h. 8 Montello.
 Valentine Mrs. Mary, dressmaker, Kiley, h. do.
 Ventura Manuel F., fisherman, b. 338 Commercial.

Vicente Joseph, fisherman, h. Cottage n. Bradford.
 Vieira Antone, fisherman, h. 12 Franklin.
 Vieira Capt. John, fisherman, h. Standish.
 Vieira Joseph, fisherman, h. 525½ Commercial.
 Vieira Manuel, seaman, h. 474 Commercial.
 Vieira Manuel, fisherman, h. Bradford c. Pleasant.
 Vieira Manuel, fisherman, h. Pleasant c. Bradford.
 Vieira Manuel J., fisherman, h. 418 Commercial.
 Vise Frank, fisherman, h. Creek road.
 Wager Antone, fisherman, h. off Pleasant.
 Wager Frank, fisherman, h. 16 Franklin.
 Wager Mrs. Joseph, h. Cottage n. Bradford.
WALKER Capt. CHAS. H., prop. pleasure yacht Echo, h. 33 Alden.
 Walker Miss Sadie R., music teacher, h. 33 Alden.
 Ward Mrs. Isaiah G., h. 19 Mechanic.
 Wareham Mrs. Sarah, h. n. cemetery.
 Wareham Capt. Wm., mariner, h. Vine.
 Watson Eugene W., provisions, Commercial, h. 25 Carver.
 Watson Geo. W., paper hanger, h. 25 Carver.
 Watson Horace H., weigher, Central wharf, h. 25 Carver.
 Weeks Capt. Edward Q., maker and packer prepared fish, h. 50 Commercial.
 Weeks Miss Hattie F., teacher, h. 14 Commercial.
 Weeks John C., h. 14 Commercial.
 Weeks John C., Jr., fisherman, h. 14 Commercial.
 Weeks Joseph, fisherman, h. 515 Commercial.
 Weeks Joseph E., fisherman, h. 515 Commercial.
 Weeks Thomas A., fisherman, h. 515 Commercial.
 Welch Chas. S., fisherman, h. r. Pilgrim house.
 Welch Mrs. Ellen, h. r. 123 Commercial.
 Welch James, mariner, h. Franklin, last house.
 Welch John W., teamster, h. r. 123 Commercial.
 Welch Mrs. Mary A., h. r. Pilgrim house.
 Welch Thomas, teamster, h. head Franklin.
WEST JOSEPH A., dealer in furniture, etc., 248 Commercial, h. Bradford n. town hall.
 West Newton P., mariner, h. Webster pl.
 West Capt. Robert L., mariner, h. 13 Central.

- West Capt. Simeon L., mariner, h. 24 Court.
 Whalen Jeremiah F., fisherman, h. Bradford E. end.
 Whalen Capt. Wm., fisherman, h. Bradford E. end.
 Whelden Mrs. Ann S., h. 17 Alden.
 Whelden Edwin A., surfman, U. S. L. S. Station No. 7, h. Alden.
 Whelden John, emp. Union Fish Co., h. 283 Commercial.
 White Frank, fisherman, h. Pleasant n. Bradford.
 White Geo. W., clerk A. G. Small, h. 61 Commercial.
 White Mrs. Harriet S., h. 161 Commercial c. Central.
 Whitcomb Chas. T. C., teacher, h. Commercial.
 Whitcomb John G., ship carpenter, h. 421 Commercial.
WHITCOMB JOSEPH, deputy sheriff, furnishing undertaker, 318 Commercial, h. Freeman c. Standish.
 Whitney Mrs. Henretta, h. Johnson.
 Whorf Capt. Amos F., seaman, h. Pearl n. Bradford.
 Whorf Capt. Geo., h. Cornell n. R. R.
 Whorf Capt. Henry S., mariner, h. 402 Commercial.
 Whorf Capt. James, h. 119 Commercial.
 Whorf Josiah G., lab., h. 35 Pearl.
 Whorf Miss Lucinda W., teacher, h. 119 Commercial.
 Whorf Philip A., agt. fishing vessels, h. 489 Commercial.
 Whorf Mrs. Sarah, h. 475 Commercial.
 Whorf Thomas R., fisherman, h. 489 Commercial.
 Whorf Warren H., seaman, h. Cornell n. R. R.
 Wiggin Frank, prin. high school, h. 18 Commercial.
 Wiley Jesse, fisherman, h. 543 Commercial.
 Williams Alfred, asst. keeper Race Point Light.
WILLIAMS ANDREW T., J. P., grocer, ship chandler, Union wharf, etc., h. 55 Commercial.
 Williams Chas., fisherman, h. 10 Montello.
 Williams Chas., fisherman, h. 563 Commercial, last h. E.
 Williams Chas. Jr., fisherman, h. 563 Commercial, last h. E.
 Williams Capt. Francis, fisherman, h. 43 Commercial.
 Williams Frank, fisherman, h. 9 Conant.
 Williams Fred E., clerk A. T. Williams, h. 69 Commercial.
 Williams Jackson R., fisherman, h. Soper n. Commercial.

- Williams John, fisherman, h. Cottage n. Bradford.
 Williams John, seaman, h. 7 Conant.
 Williams Justin P., fisherman, h. 7 Nickerson.
 Williams Manuel, fisherman, h. 54 Commercial.
 Williams Manuel, fisherman, h. 563 Commercial.
 Williams Mrs. Margaret, h. 18 Commercial (in summer).
 Williams Mrs. Marion, h. head Franklin.
 Williams Mrs. Rufus, h. Turner.
 Williams Thomas, fisherman, h. off Pleasant.
 Williams Thomas C. F., seaman, h. 21 Pearl n. Bradford.
 Williams Capt. Wm., fisherman, h. 258 Commercial.
 Winn Mrs. Geo. W., h. Bradford c. Cornell.
 Winslow Harriott P., h. 12 Central.
 Winslow James, h. Commercial c. Carver.
 Winslow Capt. Joshua G. W., mariner, h. 12 Central.
 Winslow Mrs. Mary S., h. Commercial c. Carver.
 Wolf Capt. Wm., mariner, h. 10 Vine.
 Woods Augustus P., fisherman, h. 536 Bradford.
 Woods John P., fisherman, h. 538 Bradford.
 Woods Stephen M., fisherman, h. Bradford n. Dyer.
 Woods Tony, fisherman, h. Court.
 Worth James, brakeman O. C. R. R., h. r. 285 Commercial.
 Wright —, h. 4 Pearl.
 Wyer Mrs. Lydia, h. 273 Commercial.
 Wyman Chas., emp. O. C. R. R., h. 244 Commercial.
 Young Alpheus W., book keeper H. & S. Cook, h. 499 Commercial.
 Young Capt. Chas. A., house and ship painter, Central wharf, h. Bradford opp. Prince.
 Young Chas. L., teamster, h. 13 Court.
 Young Mrs. Eleazer, h. 5 Cook.
 Young Enos N., book keeper, h. Bradford opp. C. school.
 Young Isaiah, teaming and jobbing, h. off Cornell n. R. R.
 Young Mrs. James, restaurant, 246 Commercial, h. do.
 Young John W., keeper Race Point L. S. Station, h. 449 Commercial.
 Young Josiah L., teamster, h. 440 Commercial.
 Young Loring, h. Bradford n. town hall.
 Young Mrs. Maria, Bradford, opp. C. school.
 Young Mrs. Mary, h. r. 273 Commercial.

Young Mrs. Mary, h. Johnson.

Young Capt. Nathan, ship chandler, Central Wharf Co.,
h. 22 Carver.

YOUNG PARON C., postmaster, h. Bradford
opp. Prince.

Young Mrs. Sally, 83 years of age, h. 383 Commercial.

Young Mrs. Sarah L., h. Carver c. Cudworth.

Young Capt. Silas S., h. 4 Cook.

Young Mrs. Tamsen, 87 years of age, h. 22 Carver.

Young Wm. F., fisherman, h. 29 Pearl.

Youlden Mrs. Wm., nurse, 397 Commercial, h. do.

Provincetown Business Directory.

Apothecaries.

ADAMS J. D., Commercial c. Gosnold (see first cover).

Gifford F. A. H., Gifford's block.

NEWTON Dr. A. H. & SONS, 227 Commercial (see page 19).

Artists.

Dyer A. H., 11 Winthrop.

NICKERSON G. H., n. P. O. (see page 15).

Ryder J. S., 76 Commercial.

Sawyer C. J., 361 Commercial.

SMITH, opp. national bank (see page 18).

Auctioneers.

COOK H. S., 344 Commercial (see page 29).

Johnson J. P., 8 Masonic place.

Ryder E., 303 Commercial.

WILLIAMS A. T., Union wharf (see page 35).

Bakers.

DYER Mrs. L. J., 272 Commercial (see page 8).

SMALL J. T., 274 Commercial (see page 27).

Snow Mrs. J., 104 Commercial.

Bands.

Puritan Band, Library building.

Banks.

FIRST NATIONAL BANK, 275 Commercial,
M. N. Gifford, cashier, (see page 17).

Seaman's Savings Bank, 83 Commercial.

Billiard and Pool Rooms.

Carlow D. S., 310 Commercial.

CENTRAL HOUSE, 234 Commercial (see page 2).

Blacksmiths.

Crocker P., Hilliard's wharf.

HERBOLT W. H., Steamboat wharf (see page 24).

Small I. A., Central wharf.

Taylor A., r. P. O.

Block Makers.

Holmes G. H., 203 Commercial.

Boarding Houses.

Atkins E. F., 557 Commercial.

Chapman Wm. N., 233 Commercial.

Dunham O. G., Bradford.

McDonald Mrs. J., 431 Commercial.

McPhie Mrs. M., 345 Commercial.

Paine Mrs. S. B., r. national bank.

Pinckney Mrs. J., 495 Commercial.

Boat Builders.

Smith W. W., opp. West church.

Booksellers.

PUTNAM A. L. & CO., Masonic building (see page 3).

Boots, Shoes and Rubbers.

Blake J. H., 198 Commercial.

MATHESON D. A., 304 Commercial (see page 36).

MAYO R. C., 121 Commercial (see page 16).

RICH J. L., 196 Commercial (see page 4).

TURNER I., 413 Commercial (see page 11).

Boot and Shoe Makers (Custom).

Joseph Geo., 308 Commercial.

PERRY M., 300 Commercial (see page 26).

Smith M. E., W. end.

TURNER I., 413 Commercial (see page 11).

Box Manufacturers.

PAINE J. Jr., Commercial c. Franklin (see page 13).

Brokers.

GIFFORD M. N., Bank building (see page 17).

Small D. A., Bradford c. Pearl.

Building Movers.

GAYLAND A., 300 Commercial (see page 10).

Calkers and Gravers.

Atkins S., Union wharf.

Atkins S. R., Central wharf.

Beatty J. W., G. T. place.

Mott A., Union wharf.

Canned Goods Manufacturers.

Picket L., Small's wharf.

Swift S. S., 438 Commercial.

Carpenters and Builders.

Cobb J. E., Central.

Hedge Wm. B., 353 Commercial.

Hill G. C., Bradford n. Johnson.

Higgins W., 9 Court.

Lyford R., 6 Cook.

Ryder J. N., r. 10 Court.

Small A., Commercial.

Snow J., Pilgrim house.

Carpets and Paper Hangings.

SNOW CHAS. B., 232 Commercial (see page 2).

SNOW O., 250 Commercial (see page 30).

Cigars and Tobacco.

FISH S. D., 262 Commercial (see page 25).

Gross S. S., 182 Commercial.

Holmes J. P., 267 Commercial.

Hopkins C. S., 129 Commercial.

Joseph G., 308 Commercial.

KILBURN E. J., 187 Commercial (see page 6).

SUMNER J. T., n. P. O. (see page 24).

Clothing.

- BURCH J. M.**, 268 Commercial (see page 6).
MATHESON D. A., 304 Commercial (see page 36).
RICH J. L., 196 Commercial (see page 4).
 Small J. F., 228 Commercial.
SMITH AMASA, opp. national bank (see page 3).

Coal.

- HILLIARD J. D.**, Hilliard's wharf (see page 26).
 Knowles G. O., 350 Commercial.
 Lancy B., Commercial.
WILLIAMS A. T., Union wharf (see page 35).

Commission Merchants.

- Ryder E., 303 Commercial.
 Swift S. S., Commercial.
WILLIAMS A. T., Union wharf (see page 35).

Coopers.

- Crowell S., Commercial.
 Macall A., 192 Commercial.

Crockery and Glassware.

- HOWES P. R.**, 254 Commercial (see page 12).
KENNEDY A., 140 Commercial (see page 40).
SNOW CHAS. B., 232 Commercial (see page 2).
SNOW O. & SON., 250 Commercial (see page 30).

Dentists.

- ATKINS Dr. E. N.**, 242 Commercial (see page 7).
 Hudson W. P., Commercial.

Depot and Pleasure Carriages.

- BROOKS N. C. & SON**, 96 Commercial (see page 36).
KNOWLES S., 272 Commercial (see page 13).
MAYO R. E., 141 Commercial (see page 16).
 Snow H., 104 Commercial.

Deputy Sheriffs.

- WHITCOMB J.**, 318 Commercial (see page 16).

Dining Rooms and Restaurants.

- Cook T., 224 Commercial.
DYER L. J., 272 Commercial (see page 8).
FISH S. D., opp. town hall (see page 25).

Dressmakers.

- Chapman Mrs. T., 110 Commercial.
 Chase Mrs. M. A., r. 271 Commercial.
 Clark Mrs. S. S., 150 Commercial.
 Cobb Mrs. E. A., Commercial.
 Ellis Mrs. S. E., 13 Commercial.
 Fish Mrs. S. D., 262 Commercial.
 Freeman Mrs. B., 191 Commercial.
 Freeman Mrs. M., 6 Central.
 Gross Mrs. J. F., 103 Commercial.
 Holmes Miss S. P., 13 Pearl.
 Hodgdon Mrs. H., r. 285 Commercial.
 Lavender Mrs. C. A., 137 Commercial.
 Mandly Miss M. C., 226 Commercial.
 McIntire Miss L. K., 413½ Commercial.
 Newcomb Mrs. M. J., 1 Sparrow.
 Nickerson Miss E. C., 147 Commercial.
 Rich Miss M. R., 337 Commercial.
 Smith Miss N. T., 8 Commercial.
 Valentine Mrs. M., Kiley.

Dry Goods.

- CROCKER B. T.**, 156 Commercial (see page 19).
ELLIS Mrs. M. J., 511 Commercial (see page 24).
 Freeman Mrs. A. H., 70 Commercial.
HATCH Mrs. J. S., 402 Commercial (see page 26).
HOWES P. R., 254 Commercial (see page 12).
HUGHES H. P., Masonic building (see page 20).
MATHESON M. & J., 186 Commercial (see page 8).
 Rich S. T., Central block.
 Smith D. D., Commercial.

Expresses.

- N. Y. & BOSTON DISPATCH**, 276 Commercial, S. Knowles, agt. (see page 13).

BROOKS N. C. & SON, jobbing, 96 Commercial
(see page 36).

KNOWLES S., jobbing, 272 Commercial (see page 13).

MAYO R. E., jobbing, 141 Commercial (see page 16).

Fancy Goods.

ADAMS J. D., Commercial c. Gosnold (see front cover).

COOK H. C., 344 Commercial, "Old Curiosity Shop"
(see page 29).

Crowell M. E., 235 Commercial.

DYER Miss B., 374 Commercial (see page 27).

Freeman Mrs. A. H., 70 Commercial.

HOWES P. R., 254 Commercial (see page 12).

HUGHES H. P., Masonic building (see page 20).

KILBURN E. J., 187 Commercial (see page 6).

MATHESON M. & J., 186 Commercial (see page 8).

Nickerson E. & M., 216 Commercial.

PUTNAM A. L. & CO., Masonic building (see page 3).

Ryder A. M., 322 Commercial.

SNOW O. & SON, 250 Commercial (see page 30).

SNOW C. B., 232 Commercial (see page 2).

Young Mrs. J., 246 Commercial.

Fish.

BANGS S., wholesale, 424 Commercial, (see page 24).

Bradshaw & Co., wholesale and retail, 146 Commercial.

Brown J., 139 Commercial.

Burkett W. T., opp. town hall.

Carlow D. S., lobsters, 310 Commercial.

Cook Chas. A., 240 Commercial.

Cook D. C., 427 Commercial.

COOK H. & S. & CO., wholesale, 438 Commercial (see page 14).

Cook James 2d, 348 Commercial.

Cook J. D., Steamboat wharf.

Conwell D., 356 Commercial.

Central Wharf Co., Commercial.

Eastern Weir Co., 516 Commercial.

Hatch J., prepared, 400 Commercial.

HILLIARD J. D., wholesale, Hilliard's wharf (see page 26).

Joseph Capt. J., Commercial.

Lewis J. B., 541 Commercial.

Manta J., 180 Commercial.

Matheson Wm., Steamboat wharf.

Nickerson S. T. & L., Commercial.

Pine Tree Weir Co.

Swift S. S., Swift's wharf.

Union Fish Co., R. R. wharf.

Weeks E. Q., 50 Commercial.

Florist.

WHITCOMB J., 318 Commercial (see page 16).

Fruit and Confectionery.

DYER Mrs. L. J., 272 Commercial (see page 8).

Gross S. S., 182 Commercial.

Holmes J. P., 267 Commercial.

HOPKINS CHAS. S., 129 Commercial (see page 34).

KILBURN E. J., 187 Commercial (see page 6).

PERRY M., 300 Commercial (see page 26).

SUMNER J. T., n. P. O., (see page 24).

Furniture.

KENNEDY A., 140 Commercial (see page 40).

WEST J. A., 248 Commercial (see page 29).

Gents' Furnishings.

BURCH J. M., 268 Commercial (see page 6).

MATHESON D. A., 304 Commercial (see page 36).

MOTT S. C., 319 Commercial (see page 40).

RICH J. L., 196 Commercial (see page 4).

SMALL A. F., opp. Post Office (see front cover).

SMITH AMASA, opp. national bank (see page 3).

Grain and Hay.

KNOWLES SAM'L, 272 Commercial (see page 13).

SMITH D., 138 Commercial (see page 27).

Grocers.

ADAMS J., 202 Commercial (see inside back cover).

BROWN J., 139 Commercial (see page 35).

Chase J. L., 328 Commercial.

Conwell D., 356 Commercial.

Cook C. A., 240 Commercial.

COOK S. G., 424 Commercial (see page 14).

Costa Mrs. E., 108 Commercial.

DYER Mrs. L. J., 97 Commercial (see page 8).

DYER Mrs. R. B., 370 Commercial (see page 30).

ELLIS Mrs. M. J., 511 Commercial (see page 24).

HILLIARD J. D., Hilliard's wharf (see page 26).

Kelley D. S., 111 Commercial.

Knowles G. O., 350 Commercial.

Law Mrs. Wm. H., 361 Commercial.

Matthew J., 124 Commercial.

Paine J. & L. N., Commercial.

Rich J. A., 320 Commercial.

Rich J. & Co., Central block.

Rogers M., 175 Commercial.

SMITH D., 136 Commercial (see page 27).

SMALL IRA K., 201 Commercial (see page 12).

Sparks & Dyer, 344 Commercial.

Sparks T. W., 285 Commercial.

WILLIAMS A. T., Union wharf (see page 35).

Hairdressers.

Francis J. F., 306 Commercial.

Henderson J. T., Commercial.

Lucas J., Commercial c. Carver.

Lucas A. P., Commercial.

Myrick J. W., Commercial.

Hardware.

Dyer B. H. & Co., 172 Commercial.

WEST J. A., 248 Commercial (see page 29).

Hats and Caps.

BURCH J. M., 268 Commercial (see page 6).

MATHESON D. A., 304 Commercial (see page 36).

MOTT S. C., 319 Commercial (see page 40).

RICH J. L., 196 Commercial (see page 4).

SMITH AMASA, opp. national bank (see page 3).

Hotels.

ATLANTIC HOUSE, F. P. Smith, prop., Masonic place (see page 15).

CENTRAL HOUSE, J. A. Reed, manager, 234 Commercial (see page 2).

GIFFORD HOUSE, J. Gifford, prop., Bradford c. Carver (see page 25).

PILGRIM HOUSE, Samuel Smith, prop., Commercial (see back cover).

Ice.

Bennett S. A., 12 Standish.

Bennett S., 12 Standish.

Union Ice Co., 173 Commercial.

Insurance.

Cook H. S., marine, 8 Pearl.

Equitable Marine Ins. Co., 83 Commercial.

Gifford S. S., Gifford's block.

NICKERSON L., 83 Commercial (see page 25).

SWIFT R. W., Bradford n. Pearl (see page 17).

Jewelers.

HEALEY W. C., Adams' block (see page 25)

KILBURN E. J., 187 Commercial (see page 6).

MATHESON D. A., 304 Commercial (see page 36).

PUTNAM A. L. & CO., Masonic building (see page 3).

Justices of the Peace.

SWIFT R. W., Bradford n. Pearl (see page 17).

WILLIAMS A. T., Union wharf (see page 35).

Laundries.

FALL RIVER, H. P. Hughes, agt. (see page 20).

Lawyers.

HIGGINS J., opp. town hall (see page 26).
HOPKINS J. H., Gifford's block (see page 29).

Livery Stables.

BROOKS N. C. & SON, 96 Commercial (see page 36).
KNOWLES S., 276 Commercial (see page 13).

Lumber.

Allen G., Atwood's wharf.
GAYLAND A., 300 Commercial (see page 10).
 Lancy B., Commercial.
PAINE J. Jr., Commercial c. Franklin (see page 13).

Marble and Granite Workers.

Jennings H. A., Commercial.
NICKERSON R., 272 Commercial (see back cover).

Masons.

Fuller Chas. A., Bradford c. Carver.
 Fuller James, Central wharf.
 Hamlin A., 123 Commercial.
 Johnson G. F., R. R. wharf.

Milk.

Dars F. A., 525 Commercial.
 Nickerson L. F., Bradford c. Carver.
 Smith J. S., Winthrop place.

Milliners.

CHAMBERLAIN Mrs. J. M., 228 Commercial (see page 9).
 Crowell M. E., 235 Commercial.
 Freeman Miss E. B., 191 Commercial.
 Holway Miss H., Court.
PAINE Miss L. A., 256 Commercial (see page 8).

Mills.

GAYLAND A., 300 Commercial (see page 10).

Museums.

Adams Miss E. V., 409 Commercial.

Musical Merchandise.

SNOW CHAS. B., 232 Commercial (see page 2).
SNOW O. & SON, 250 Commercial (see page 30).

Music Teachers.

Hartford Mrs. H. M., 365 Commercial.
 Holmes Miss S. P., 13 Pearl.
 Johnson Mrs. S. N., Masonic place c. Bradford.
 Matheson Miss N. S., 10 Conant.
 McKennon A. W., r. national bank.
NEWTON A. H. Jr., 227 Commercial (see page 19).
NEWTON Miss N., 227 Commercial (see page 19).
ORBON Miss ANNIE V., 10 Court (see pages 39 and 45).
 Paine Miss L. C., 260 Commercial.
 Sawyer Mrs. C. J., 361 Commercial.
 Strauchauer H., 2 Commercial.
 Walker Miss S. R., Alden.

Newsdealers.

KILBURN E. J., 187 Commercial (see page 6).
PUTNAM A. L. & CO., Masonic building (see page 3).

Newspapers.

PROVINCETOWN ADVOCATE, N. T. Freeman, publisher, Marine hall, (see page 28).

Notaries Public.

HILLIARD J. D., Hilliard's wharf (see page 26).
SWIFT R. W., Bradford n. Pearl (see page 17).
WILLIAMS A. T., Union wharf (see page 35).

Nurses.

Eldridge Mrs. R. S. Commercial c. Kiley.
 Pennock Mrs. S., Bradford n. Pleasant.
 Youlden Mrs. Wm., 397 Commercial.

Oil Manufacturers.

Atwood N. E., cod liver, 70 Commercial.
 Cook C. & Son, watch, Miller hill.

Packers (Prepared Fish).**COOK H. & S.**, 438 Commercial (see page 14).

Cook J. D., S. B. wharf.

HILLIARD J. D., Hilliard's wharf (see page 26).

Hatch J. B., 400 Commercial.

Swift S. S. & Co., 438 Commercial.

Paints, Painters and Paperhangers.

Cook J. W., Commercial.

Dearborn J. H., paperhanger, Winslow.

Dyer T. W., 97 Commercial.

Dyer B. H. & Co., 172 Commercial.

HILLIARD J. D., Hilliard's wharf (see page 26).

Holmes E. H., 4 Cross.

Jenkinson G. O., Kiley.

Lancy H. J., sign, 146 Commercial.

Smith H. M., 136 Commercial.

WILLIAMS A. T., Union wharf (see page 35).**Paper Stock and Metals.****COOK H. S.**, 344 Commercial, "Old Curiosity Shop"
(see page 29).

Swift J., Commercial.

Patterns and Stamping.**CROCKER Mrs. R. N.**, 156 Commercial (see
page 19).**DYER Miss B.**, 374 Commercial (see page 27).**HATCH Mrs. J. S.**, 402 Commercial, (see page 26).**HUGHES H. P.**, Masonic building (see page 20).**Photographers.**

Gifford F. A. H., Gifford's block.

NICKERSON GEO. H., next P. O. (see page 15).**SMITH W. M.**, opp. national bank (see page 18).**Physicians.****BIRGE W. S., M. D.**, Commercial (see page 7).**NEWTON A. H., M. D.**, 227 Commercial (see
page 19).**NEWTON F. L., M. D.**, 227 Commercial (see
page 19).

Peck E. C., 19 Tremont.

Pleasure Yachts.

"Arbutus," Capt. J. E. Freeman, S. B. Wharf.

"Echo," Capt. C. H. Walker, S. B. Wharf.

"Florence," Capt. T. Mayo, S. B. Wharf.

"Henrietta," Capt. S. Nickerson, S. B. Wharf.

Printers.**FREEMAN N. T.**, *Advocate* Office (see page 28).**Provisions.****ADAMS J.**, 202 Commercial (see inside back cover).**BROWN J.**, 139 Commercial (see page 35).**COOK S. G.**, 424 Commercial (see page 14).**DYER Mrs. R. B.**, 370 Commercial (see page 30).

Nickerson W. K., Commercial.

Rich J. & Co., Central block.

Rogers M., 175 Commercial.

Sparks & Dyer, 344 Commercial.

Sparks T. W., 285 Commercial.

SMALL A. G., 66 Commercial (see page 18).**SMALL IRA K.**, 201 Commercial (see page 12).**SMITH D.**, 136 Commercial (see page 27).

Turner M. S., 5 Cornell.

Watson E. W., Commercial.

Pumps and Driven Wells.

Alexander R. G., Mechanic.

HERBOLT W. H., Steamboat wharf (see page 24).

Lewis D. F., 448 Commercial.

Sailmakers.

Cook Bros., Knowles' wharf.

DYER C. H., S. G. Cook's wharf (see page 30).

Hannum C. A., Union wharf.

Lewis G. H., H. & S. Cook's wharf.

Lothrop E., Central wharf.

Paine F. A.

Pettes G. W., Hilliard's wharf.

Rich P. B., Commercial.

Sewing Machines.

SNOW CHAS. B., 232 Commercial (see page 2).
SNOW O. & SON, 250 Commercial (see page 30).
PUTNAM A. L. & CO., Masonic building (see page 3).

Seine Repairers.

Tarrant R. G., 46 Commercial.

Ship Chandlers.

Central Wharf Co., Commercial.
 Cook C. A., 240 Commercial.
COOK H. & S. & CO., 438 Commercial (see page 14).
 Conwell D., 356 Commercial.
HILLIARD J. D., 316 Commercial (see page 26).
 Knowles G. O., 350 Commercial.
 Paine J. & L. N., Commercial.
WILLIAMS A. T., Union wharf (see page 35).

Shipsmiths.

HERBOLT W. H., Steamboat wharf (see page 24).
 Livermore J. H., Union wharf.

Shipwrights.

BICKERS J. P., n. E. K. Cook's wharf (see page 34).
 Collins Isaac, Central wharf.
 Hopkins N., Union wharf.
 Kiley J. Jr.,
 Standish Geo., Commercial.

Shirt Manufacturers.

Puritan Shirt Co., Court.

Stoves, Tinware, etc.

Engles James, 306 Commercial.
 Holmes H., 190 Commercial.
 Sparrow H. O., 167 Commercial.

Submarine Contractors.

Gifford I., 323 Commercial.
 Gifford N. N., 1 Freeman.

Tailors.

SMALL A. F., 301 Commercial (see front cover).
 Small J. F., Commercial.
SMITH D. A., opp. town hall (see inside back cover).

Teaming.

Barnett R. F., School.
BROOKS N. C. & SON, 96 Commercial (see page 36.)
 Campbell J., 7 Pleasant.
 Chase F., 113 Commercial.
 Ellis G. W., West end.
 Graham J. M., Young's ct.
MAYO R. E., 141 Commercial (see page 16).
 Turner M. S., 5 Cornell.
 Young J. M., Young's ct.

Undertakers.

WHITCOMB J., 318 Commercial (see page 16).

Watchmakers and Jewelers.

HEALEY W. C., 200 Commercial (see page 25).
PUTNAM A. L. & CO., Masonic building (see page 3).

Water Boats.

Atkins Wm. T., 161 Commercial.

Wharf Builders.

GAYLAND A., 300 Commercial (see page 10).

Wood.

HILLIARD J. D., Hilliard's wharf (see page 26).
 Knowles G. O., 350 Commercial.

Census of Massachusetts.

BARNSTABLE Co.

	1880.	1885
Barnstable	4,242	4,050
Bourne		1,363
Brewster	1,144	934
Chatham	2,252	2,028
Dennis	3,288	2,923
Eastham	692	633
Falmouth	2,422	2,520
Harwich	3,265	2,783
Mashpee	346	311
Orleans	1,294	1,176
Provincetown	4,341	4,480
Sandwich	3,543	2,124
Truro	1,017	972
Wellfleet	1,875	1,687
Yarmouth	2,173	1,856

BERKSHIRE Co.

Adams	5,591	8,282
Alford	348	341
Becket	1,123	938
Cheshire	1,537	1,448
Clarksburg	724	708
Dalton	2,052	2,113
Egremont	875	826
Florida	459	487
Great Barrington	4,653	4,279
Hancock	642	613
Hinsdale	1,595	1,656
Lanesborough	1,286	1,212
Lee	3,939	4,274
Lenox	2,043	2,154
Monterey	635	571
Mount Washington	205	160
New Ashford	203	163
New Marlborough	1,876	1,661
North Adams	10,191	12,540
Otis	785	703
Peru	403	368
Pittsfield	13,364	14,466
Richmond	1,124	854
Sandisfield	1,107	1,019
Savoy	715	691
Sheffield	2,204	2,033
Stockbridge	2,357	2,113
Tyringham	542	457
Washington	493	470
West Stockbridge	1,923	1,648
Williamstown	3,394	3,729
Windsor	644	657

BRISTOL Co.

Acushnet	1,105	1,071
Attleborough	11,111	13,175
Berkley	927	941
Dartmouth	3,430	3,448
Dighton	1,791	1,782

Easton	3,902	3,948
Fairhaven	2,875	2,880
Fall River	48,961	56,863
Freetown	1,329	1,457
Mansfield	2,765	2,939
New Bedford	26,845	33,393
Norton	1,732	1,718
Raynham	1,681	1,535
Rehoboth	1,891	1,788
Seekonk	1,227	1,295
Somerset	2,006	2,475
Swansea	1,355	1,403
Taunton	21,213	23,674
Westport	2,894	2,706

DUKES Co.

Chilmark	494	412
Cottage City	672	709
Edgartown	1,303	1,165
Gay Head	161	186
Gosnold	152	122
Tisbury	1,518	1,541

ESSEX Co.

Amesbury	3,355	4,403
Andover	5,169	5,711
Beverly	8,453	9,186
Boxford	824	840
Bradford	2,643	3,106
Danvers	6,598	7,048
Essex	1,670	2,722
Georgetown	2,231	2,299
Gloucester	19,329	21,713
Groveland	2,227	2,272
Hamilton	935	850
Haverhill	18,472	21, 95
Ipswich	3,699	4,207
Lawrence	39,151	38,845
Lynn	38,274	45,861
Lynnfield	686	766
Manchester	1,640	1,638
Marblehead	7,467	7,518
Merrimac	2,237	2,378
Methuen	4,392	4,507
Middleton	1,000	899
Nahant	808	637
Newbury	1,566	1,590
Newburyport	13,538	13,716
North Andover	3,217	3,425
Peabody	9,028	9,530
Rockport	3,912	3,888
Rowley	1,201	1,183
Salem	27,563	28,084
Salisbury	4,079	4,840
Saugus	2,625	2,855
Swampscott	2,500	2,471
Topsfield	1,165	1,141
Wenham	889	871
West Newbury	1,989	1,899

FRANKLIN Co.

Ashfield	1,066	1,097
Bernardston	934	930
Buckland	1,739	1,760
Charlemont	932	958
Colerain	1,777	1,605
Conway	1,760	1,573
Deerfield	3,543	3,042
Erving	872	873
Gill	733	860
Greenfield	3,903	4,869
Hawley	592	545
Heath	560	568
Leverett	742	779
Leyden	507	447
Monroe	166	176
Montague	4,875	5,628
New Salem	869	832
Northfield	1,603	1,705
Orange	3,169	3,650
Rowe	502	582
Shelburne	1,621	1,614
Shutesbury	529	485
Sunderland	755	700
Warwick	713	662
Wendell	465	509
Whately	1,074	999

HAMPDEN Co.

Agawam	2,216	2,357
Blandford	979	954
Brimfield	1,203	1,137
Chester	1,473	1,318
Chicopee	11,286	11,528
Granville	1,205	1,193
Hampden	958	868
Holland	302	229
Holyoke	21,915	27,894
Longmeadow	1,401	1,677
Ludlow	1,526	1,649
Monson	3,758	3,958
Montgomery	303	278
Palmer	5,504	5,923
Russell	823	847
Southwick	1,104	982
Springfield	33,340	37,577
Tolland	452	422
Wales	1,030	853
Westfield	7,587	8,961
West Springfield	4,149	4,448
Wilbraham	1,628	1,724

HAMPSHIRE Co.

Amherst	4,298	4,199
Belchertown	2,346	2,307
Chesterfield	769	698
Cummington	881	805
Easthampton	4,206	4,291
Enfield	1,043	1,010
Goshen	327	336

Granby	753	729
Greenwich	633	532
Hadley	1,938	1,747
Hatfield	1,495	1,367
Huntington	1,236	1,267
Middlefield	648	513
Northampton	12,172	12,895
Pelham	614	549
Plainfield	457	453
Prescott	460	448
South Hadley	3,538	3,949
Southampton	1,046	1,025
Ware	4,817	6,003
Westhampton	563	541
Williamsburgh	2,234	2,044
Worthington	758	763

MIDDLESEX Co.

Acton	1,797	1,785
Arlington	4,100	4,673
Ashby	914	871
Ashland	2,394	2,633
Ayer	1,881	2,190
Bedford	931	930
Belmont	1,615	1,639
Billerica	2,000	2,161
Boxborough	319	348
Burlington	711	604
Cambridge	52,699	59,660
Carlisle	478	526
Chelmsford	2,553	2,304
Concord	3,922	3,727
Dracut	1,595	1,927
Dunstable	453	431
Everett	4,159	5,375
Frammingham	6,235	8,275
Groton	1,862	1,987
Holliston	3,098	2,926
Hopkinton	4,601	3,922
Hudson	3,739	3,968
Lexington	2,460	2,718
Lincoln	907	901
Littleton	994	1,067
Lowell	59,475	64,051
Malden	12,017	16,407
Marlborough	10,127	10,941
Maynard	2,291	2,703
Medford	7,573	9,041
Melrose	4,560	6,101
Natick	8,479	8,460
Newton	16,995	19,759
North Reading	900	878
Pepperell	2,348	2,587
Reading	3,181	3,539
Sherborn	1,401	1,391
Shirley	1,365	1,242
Somerville	24,933	29,992
Stoneham	4,890	5,652
Stow	1,045	976
Sudbury	1,178	1,165

Tewksbury	2,179	2,323	Middleborough	5,237	5,173
Townsend	1,967	1,846	Pembroke	1,405	1,313
Tyngsborough	631	604	Plymouth	7,093	7,239
Wakefield	5,547	6,060	Plympton	694	600
Waltham	11,712	14,609	Rochester	1,043	1,021
Watertown	5,426	6,238	Rockland	4,553	4,784
Wayland	1,962	1,946	Scituate	2,466	2,350
Westford	2,147	2,193	South Abington	3,024	3,595
Weston	1,448	1,427	South Scituate	1,820	1,589
Wilmington	933	991	Wareham	2,896	3,254
Winchester	3,802	4,390	West Bridgewater	1,665	1,707
Woburn	10,931	11,750			

NANTUCKET Co.

Nantucket	3,727	3,143
-----------	-------	-------

NORFOLK Co.

Bellingham	1,223	1,198
Braintree	3,855	4,040
Brookline	8,057	9,195
Canton	4,516	4,380
Cohasset	2,182	2,216
Dedham	6,233	6,641
Dover	653	664
Foxborough	2,950	2,814
Franklin	4,051	3,983
Holbrook	2,130	2,334
Hyde Park	7,088	8,400
Medfield	1,371	1,594
Medway	3,956	2,777
Millis		683
Milton	3,206	3,555
Needham	5,252	2,586
Norfolk	930	825
Norwood	2,345	2,921
Quincy	10,570	12,144
Randolph	4,027	3,807
Sharon	1,492	1,328
Stoughton	4,875	5,183
Walpole	2,494	2,443
Wellesley		3,013
Weymouth	10,570	10,740
Wrentham	2,482	2,710

PLYMOUTH Co.

Abington	3,697	3,699
Bridgewater	3,620	3,827
Brockton	13,608	20,783
Carver	1,039	1,091
Duxbury	2,196	1,924
East Bridgewater	2,710	2,812
Halifax	542	530
Hanover	1,897	1,966
Hanson	1,309	1,227
Hingham	4,485	4,375
Hull	383	451
Kingston	1,524	1,570
Lakeville	1,008	980
Marion	958	965
Marshfield	1,781	1,649
Mattapoisett	1,365	1,215

Middleborough	5,237	5,173
Pembroke	1,405	1,313
Plymouth	7,093	7,239
Plympton	694	600
Rochester	1,043	1,021
Rockland	4,553	4,784
Scituate	2,466	2,350
South Abington	3,024	3,595
South Scituate	1,820	1,589
Wareham	2,896	3,254
West Bridgewater	1,665	1,707

SUFFOLK Co.

Boston	362,839	390,406
Chelsea	21,782	25,709
Revere	2,263	3,637
Winthrop	1,043	1,370

WORCESTER Co.

Ashburnham	1,666	2,058
Athol	4,307	4,758
Auburn	1,317	1,268
Barre	2,419	2,093
Berlin	977	899
Blackstone	4,907	5,435
Bolton	903	876
Boylston	854	834
Brookfield	2,820	3,013
Charlton	1,900	1,823
Clinton	8,029	8,945
Dana	736	695
Douglas	2,241	2,205
Dudley	2,803	2,742
Fitchburg	12,429	15,375
Gardner	4,988	7,283
Grafton	4,030	4,498
Hardwick	2,233	3,145
Harvard	1,253	1,184
Holden	2,499	2,470
Hubbardston	1,386	1,303
Lancaster	2,008	2,050
Leicester	2,779	2,923
Leominster	5,772	5,297
Lunenburg	1,101	1,071
Mendon	1,094	945
Milford	9,310	9,343
Millbury	4,741	4,555
New Braintree	610	558
Northborough	1,676	1,853
Northbridge	4,053	3,785
North Brookfield	4,459	4,201
Oakham	869	749
Oxford	2,604	2,355
Paxton	592	561
Petersham	1,109	1,032
Phillipston	621	530
Princeton	1,100	1,038
Royalston	1,192	1,153
Rutland	1,059	963
Shrewsbury	1,500	1,459

Southborough	2,142	2,100
Southbridge	6,464	6,501
Spencer	7,466	8,247
Sterling	1,414	1,331
Sturbridge	2,062	1,981
Sutton	3,105	3,101
Templeton	2,789	2,627
Upton	2,023	2,265
Uxbridge	3,111	2,948
Warren	3,889	4,031
Webster	5,696	6,220
Westborough	5,214	4,880
West Boylston	2,994	2,927
West Brookfield	1,917	1,747
Westminster	1,652	1,556
Winchendon	3,722	3,872
Worcester	58,291	68,383

By COUNTIES.

Barnstable	31,897	29,845
Berkshire	69,032	73,634
Bristol	139,040	158,491
Dukes	4,300	4,135
Essex	244,535	263,694
Franklin	36,001	37,448
Hampden	104,142	116,777
Hampshire	47,232	48,472
Middlesex	317,830	356,810
Nantucket	3,727	3,143
Norfolk	96,507	102,174
Plymouth	74,018	81,689
Suffolk	387,927	421,122
Worcester	226,897	244,031

Totals — 1880, 1,783,085; 1885, 1,941,465.

INDEX TO ADVERTISERS.

	PAGE.
Adams J., groceries and provisions	inside back cover
Adams J. D., pharmacist	front cover
Atkins Dr. E. N., dentist	7
Bangs S., wholesale fish dealer	24
Bank First National	17
Bickers J. P., shipwright	34
Birge Wm. S., M. D., physician	7
Burch J. M., clothing, etc.	6
Brooks N. C. & Son, livery stable, etc.	36
Brown J., flour, groceries, etc.	35
Chamberlain Mrs. J. M., milliner	9
Cook H. & S. & Co., fish makers and wholesale dealers	14
Cook H. S., "Old Curiosity Shop"	29
Cook S. G., groceries and provisions	14
Crocker S., dry and fancy goods	19
Dyer Miss B., fancy goods	27
Dyer C. H., sailmaker	30
Dyer Mrs. L. J., baker, dining rooms, etc.	8
Dyer Mrs. R. B., groceries, etc.	30
Ellis Mrs. M. J., groceries, dry goods, etc.	24
Fish S. D., restaurant	25
Freeman N. T., printer and publisher	28
Gayland A., contractor	10
Gifford James, Gifford house	25
Gifford M. N., agt. Lombard Investment Co.	17
Hatch Mrs. J. S., dry and fancy goods	26

Healey W. C., watchmaker and jeweler	25
Herbolt W. H., ship and blacksmith	24
Higgins J., lawyer,	26
Hilliard J. D., ship chandler, etc.	26
Hopkins J. H., lawyer	29
Hopkins C. S., mfg. confectioner	34
Howes P. R., dry goods, etc.	12
Hughes H. P., dry goods, etc.	20
Kennedy A., furniture, etc.	40
Kilburn E. J., fruits and fancy goods	6
Knowles Samuel, flour, grain, livery, etc.	13
Matheson D. A., clothing, boots, etc.	36
Matheson M. & J., dry and fancy goods	8
Mayo R. E., depot carriage, boots, etc.	16
Miller F. C., groceries and provisions	11
Mott S. C., Provincetown hat store	40
Newton Dr. A. H. & Sons, pharmacists and physicians	19
Newton Prof. Adin H. and Miss Nettie, teachers of vocal and instrumental music,	19
Nickerson G. H., photo. and crayon artist,	15
Nickerson L., insurance	25
Nickerson R., monumental studio	see back cover
Orbon Miss A. V., music teacher	39
Paine J. Jr., lumber, boxes, etc.	13
Paine, Miss L. A., milliner	8
Perry M., fruits, cigars, etc.	26
Putnam A. L. & Co., jewelers, booksellers, etc.	3
Reed James, Central house	2
Rich J. L., boots, shoes, furnishings	4
Small A. F., tailor and gents' furnishings	front cover
Small A. G., groceries and provisions	18
Small J. T., baker, etc.	27
Small Ira K., grocer and commissions	12
Smith Amasa, clothing, furnishings, etc.	3
Smith D. A., draper and tailor	inside back cover
Smith David, hay, grain, groceries, etc.	27
Smith Francis P., Atlantic house	15
Smith Samuel S., proprietor Pilgrim house	back cover
Smith Wm. M., photo. and crayon artist	18
Snow C. B., carpets, crockery, etc.	2
Snow Obadiah & Son, musical mdse., crockery, etc.	30
Sumner J. T., cigars, fruits, etc.	24
Swift R. W., conveyancer, insurance, etc.	17
Turner Isaiah, boots, shoes and rubbers	11
West J. A., furniture and hardware	29
Whitcomb J., undertaker	16
Williams A. T., ship chandler, etc.	35

JOHN ADAMS,

DEALER IN

GROCERIES, FLOUR, COUNTRY PRODUCE

AND

PROVISIONS.

ALSO CONSTANTLY ON HAND,

Choice Beef, Poultry, Mutton, Lamb, Veal, Pork, Bacon,
Tongues, Canned Goods, etc.

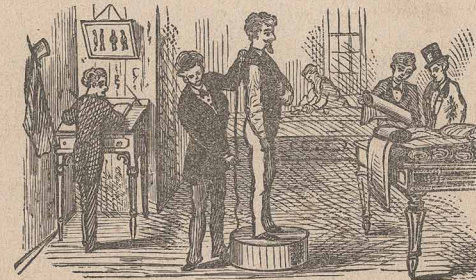
Goods promptly delivered FREE in any part of the village.

Adams' Block, 202 Commercial Street, - - - Provincetown, Mass.

D. A. SMITH,

AGENT,

Fashionable Draper and Tailor.



Opposite Town Hall, Commercial St., Provincetown.

"Ye Olde Pilgrim's Hostelrie,"

313 Commercial Street.



Ye original Uncle Sam, ye Olde Boniface, still gives personal attention to ye wayfarers.

Pilgrim House.

First-Class, with good situation, near Depot and Business Centres, offers every convenience and comfort to Tourists, Business Men and Families.

TERMS REASONABLE.

NICKERSON'S MONUMENTAL STUDIO.

No. 272 Commercial Street, two doors West of Kroegle's Livery Stable.



As we do our own work we can easily convince those who give us a call that our promise to furnish work at prices that cannot be duplicated, is not merely to catch the unwary.

The best way to convince those who, on seeing the superior work sent out from our place cry "such nice work could not have been done out of the city," is to let them to come in freely and see it done, for seeing is believing.

GRANITE WORK OF ALL KINDS FURNISHED.

E. NICKERSON, Proprietor.