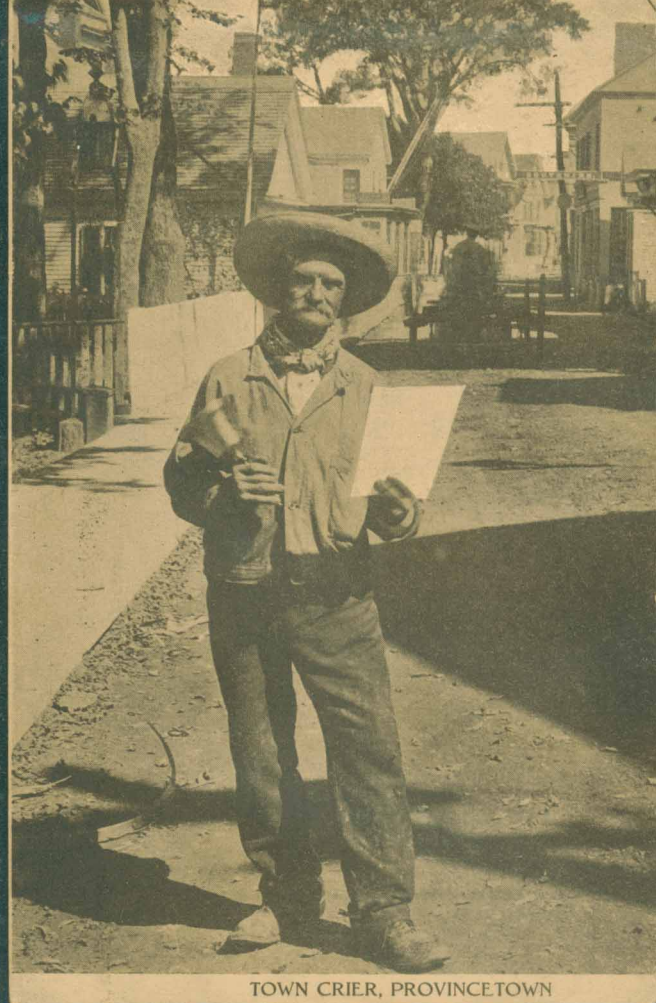




Town Crier, Commercial Street,
Provincetown, Mass.



TOWN CRIER, PROVINCETOWN





The Town Crier
(On Road to The
Monument),
Provincetown,
Mass.



Town Crier, Provincetown, Mass.



180—Ye Old Town Crier, Provincetown, Cape Cod, Mass.

971 The Town Crier (On Bradford Street) Provincetown, Mass.



The Town Crier (On Road to The Monument) Provincetown, Mass.



The Town Crier [on Bradford St.] Provincetown, Mass.



WALTER SMITH, TOWN CRIER, PROVINCETOWN, MASS.

Provincetown, Mass., Looking from Railroad Wharf.



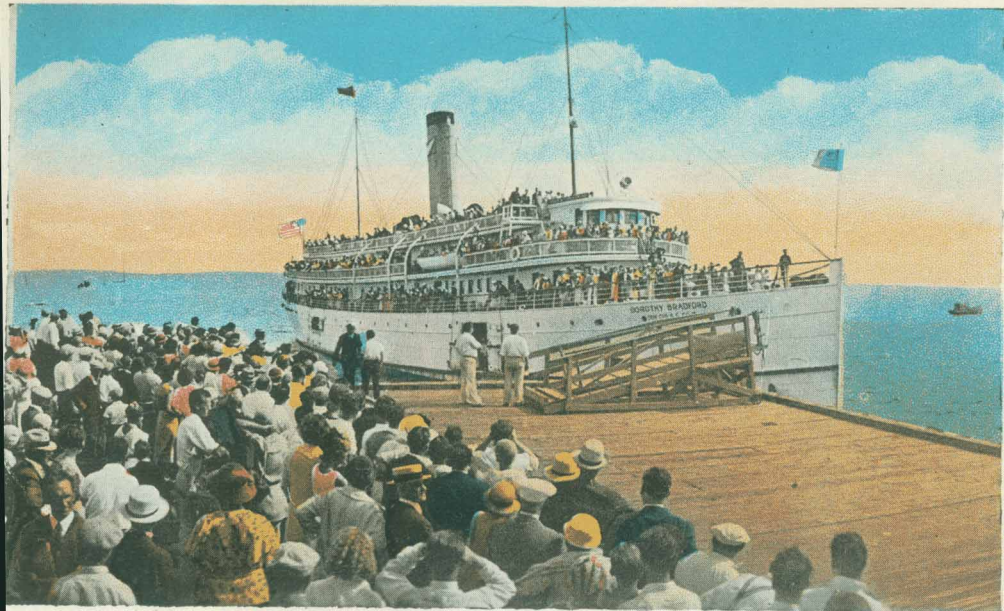
Steamer Dorothy Bradford,
Provincetown, Mass.



Steamer Dorothy Bradford Docking,
Provincetown, Mass.



S. S. DOROTHY BRADFORD ARRIVING AT PROVINCETOWN PIER, MASS.

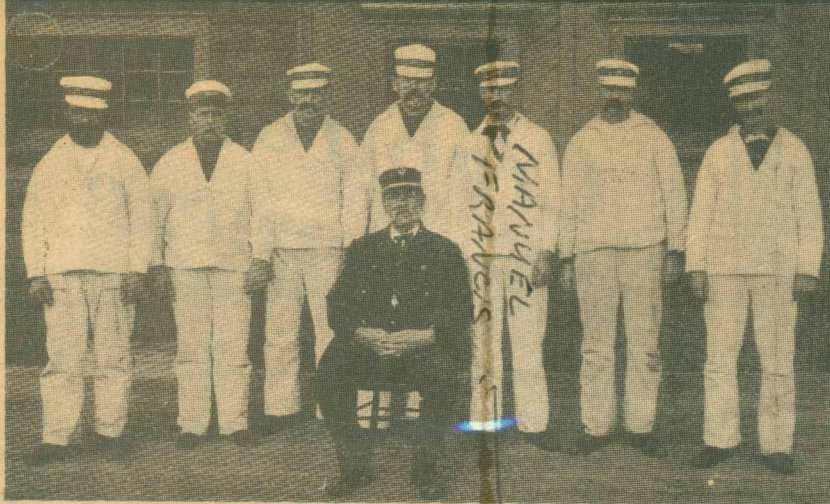


Steamer Dorothy Bradford leaving Boston for Provincetown, Mass.



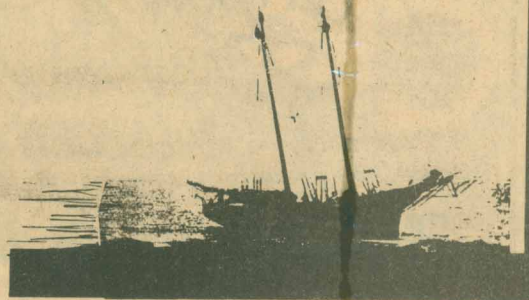


STEAMBOAT LANDING, PROVINCETOWN



Captain Edwin P. Worthen (center) and the crew of the Highland Lifesavers Satation

Life Savers of Cape Cod



By Jim Hildreth

Many a ship's been wrecked on the shoals off Cape Cod and many a life's been lost. Long before the United States Coast Guard took on sole responsibility for patrolling the shore line, the Life Savers prevented many deaths with heroic rescues of shipwreck victims. Until 1915, this group of brave individuals battled frigid weather and stormy seas, often putting their own lives on the line, to rescue the crews of ill-fated ships.

In 1872, nine lifesaving stations were erected on the Cape. The Outer Cape stations were located at Cahoon Hollow, Wellfleet, the Pamet River, Truro, Highland in

swept the coast of Cape Cod."

On Christmas Eve, 1872, Worthen and the Highland crew rescued the entire crew of the German bark *Francis* during a northeaster. Shortly after the rescue, the ship was pounded by the waves until it broke apart. Later that evening another vessel, *Peruvian*, wrecked on the shoals a mile south of the lifesaving station. Although the Highland crew gave their best effort to rescue the crew members, all 28 people drowned in the freezing water.

The only original lifesaving station that still exists is at Race Point in Provincetown. The "Old Harbor" was

North Truro, and Race Point and Peaked Hill Bars in Provincetown. All were built on the backside of the Cape, facing the ocean.

The buildings were two-story structures and each had an observatory that allowed the life savers to look out on clear days and keep a careful watch on shipping along the coast. The stations were painted red to make them highly visible from the sea and they were marked by a 60-foot high flagstaff.

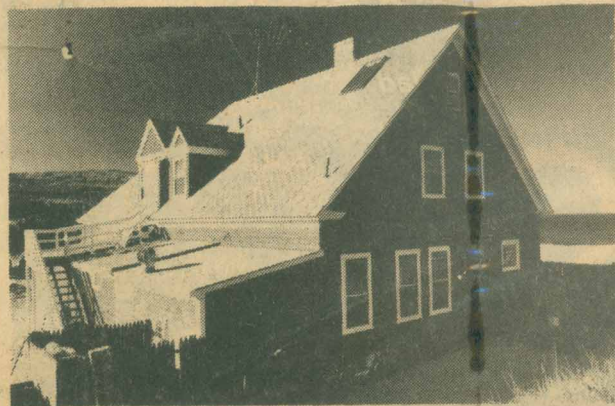
By night and during bad weather the life savers patrolled the beaches. The distance between each station was approximately 5 miles and halfway between each station was a small hut appropriately called a halfway house. Life savers from each station would walk to the hut, keeping a watchful eye out for shipwrecks, and report to each other what was seen during the patrol.

The life savers utilized several pieces of rescue equipment and when needed, they skillfully put their machines and experience to good use. One means of rescuing shipwreck victims was to launch a lifeboat directly into the surf. It was the most hazardous rescue method because most shipwrecks occurred during winter storms when the northeast winds blew with gale force and the water was icy cold.

Captain Edwin P. Worthen was the keeper of the Highland Life-Saving Station for 30 years. He served as keeper of the station longer than any other person in the United States. Captain Worthen was a warrior of the sea, "a triumphant fighter of the storms that

brought to Provincetown in 1977 and was opened to the public in 1978. In previous years the Cape Cod National Seashore sponsored tours and lectures at the station. This year, however, the station is closed while an access boardwalk to the station is being repaired. The National Seashore will give evening lectures concerning the Life Savers at the Visitor's Center beginning Thursday, June 27.

The station at Cahoon Hollow, Wellfleet is not the original which was destroyed by fire, but it is the structure that replaced the original in 1893. When visiting Wellfleet stop at the Beachcomber on Cahoon Hollow Road and catch a glimpse of the building that housed the Wellfleet Life-Savers and imagine them crashing the surf every time a shipwreck was sighted.



the Beachcomber was Wellfleet's Life-Savers Station

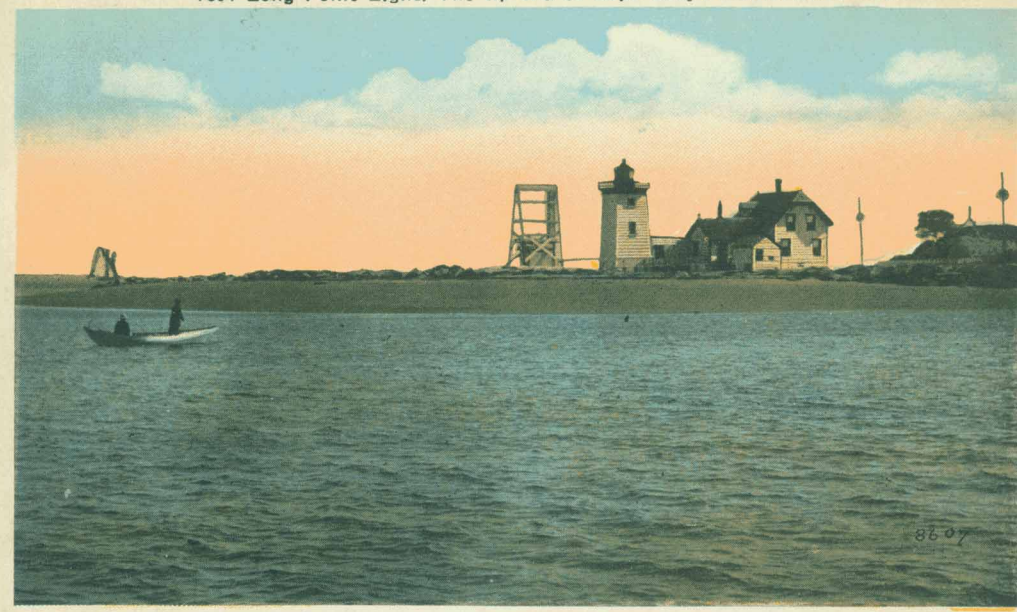
PROVINCETOWN IN BACKGROUND BEFORE MONUMENT



FORT

Long Point Light, Provincetown, Mass.

7004 Long Point Light. The tip end of Cape Cod, Provincetown, Mass.



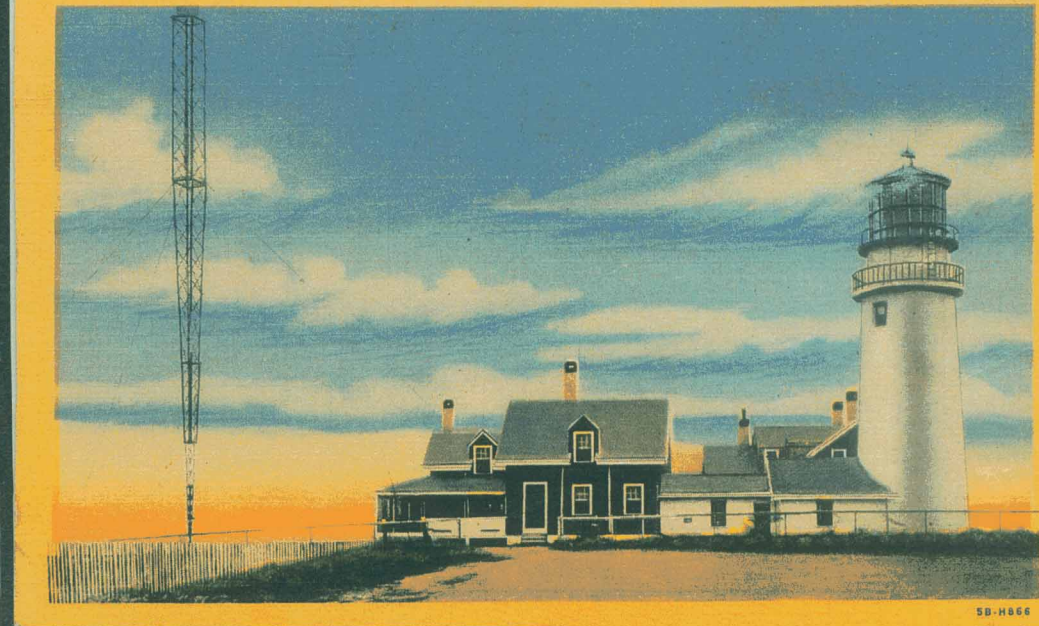
3607

LONG POINT LIGHT

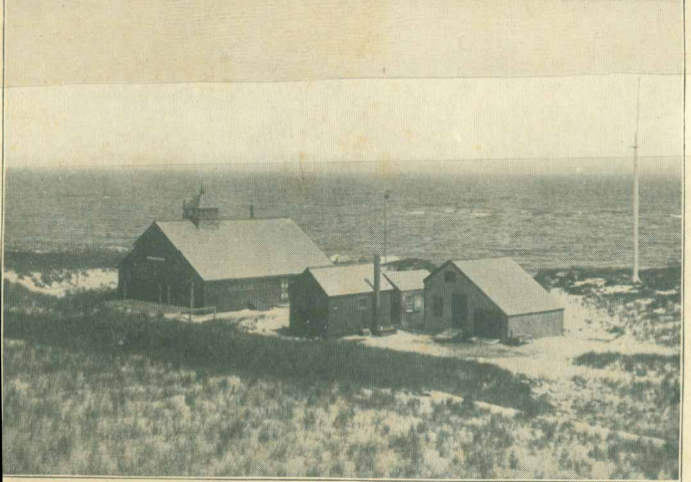
End of Cape Cod, Provincetown, Mass.



161 Highland Light and Radio Beacon, North Truro, Cape Cod, Mass.

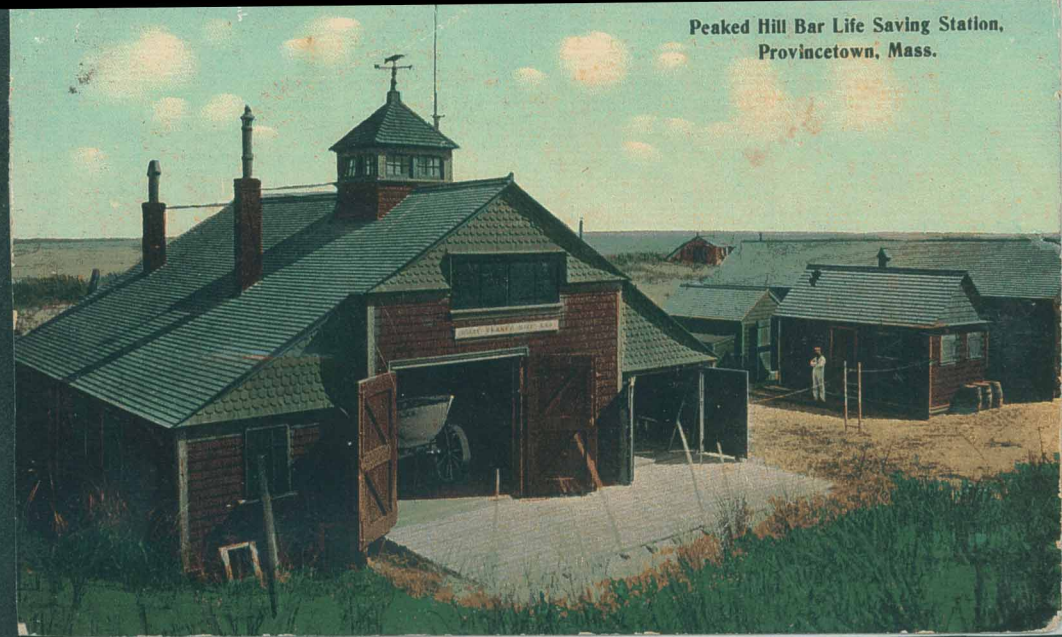


5B-H866





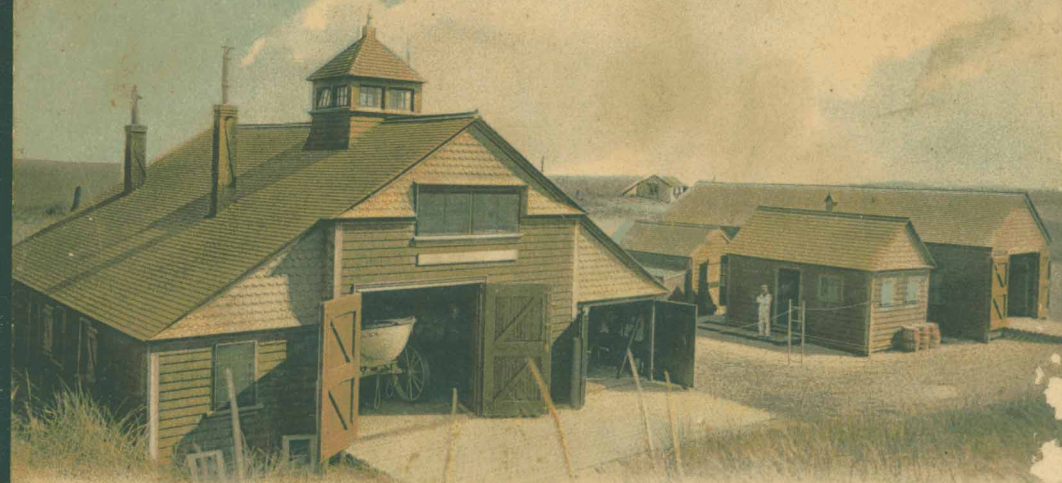
Peaked Hill Coast Guard Station, Provincetown, Mass.



Peaked Hill Bar Life Saving Station,
Provincetown, Mass.



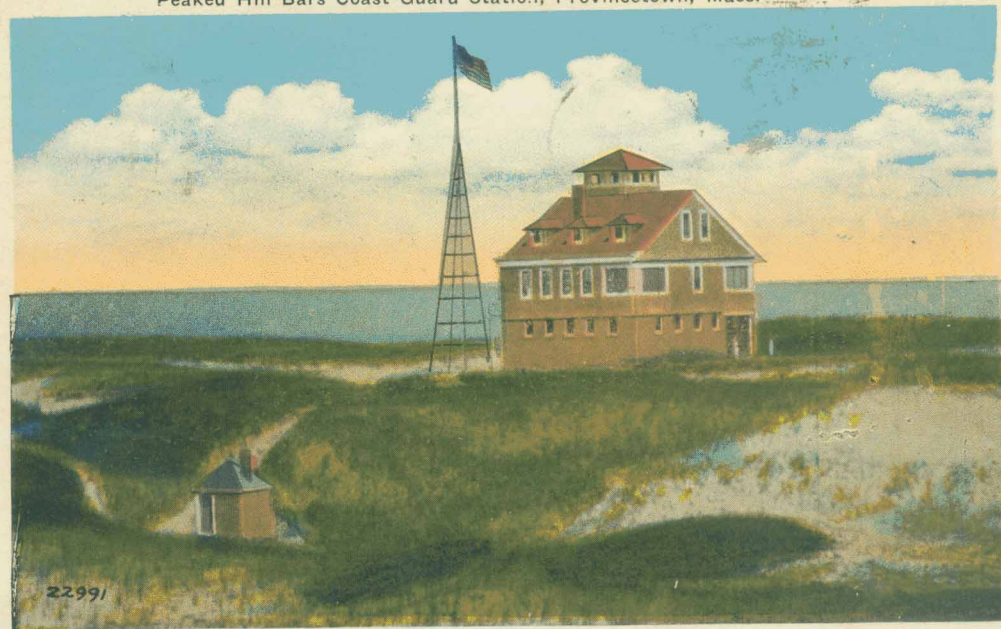
Peaked Hill Life Saving Station, Provincetown, Mass.



G 22025 Peaked Hill Bar Life Saving Station, Cape Cod, Mass



Peaked Hill Bars Coast Guard Station, Provincetown, Mass.



22991



Copyright 1906 by the Rotograph Co.

A 6819 U. S. Life Saving Station, Race Point, Provincetown, Mass.

Pub by the Provincetown Advocate.

Wood End Light, Provincetown, Mass.



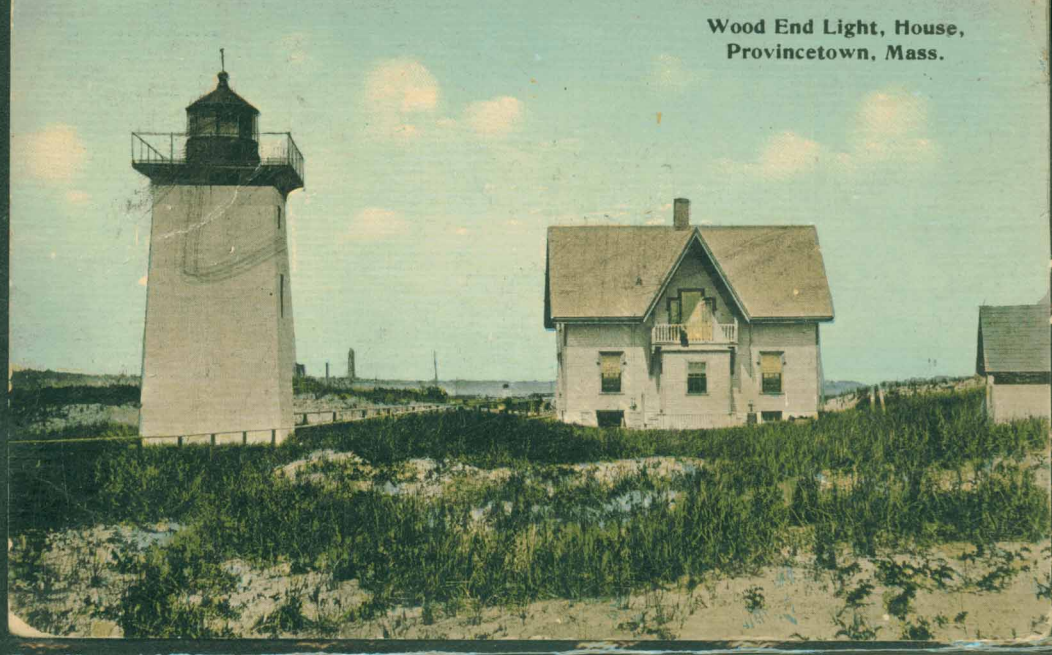
Wood End Life Saving Station,
Provincetown, Mass.



Wood End Light, Provincetown, Mass.



Wood End Light, House,
Provincetown, Mass.

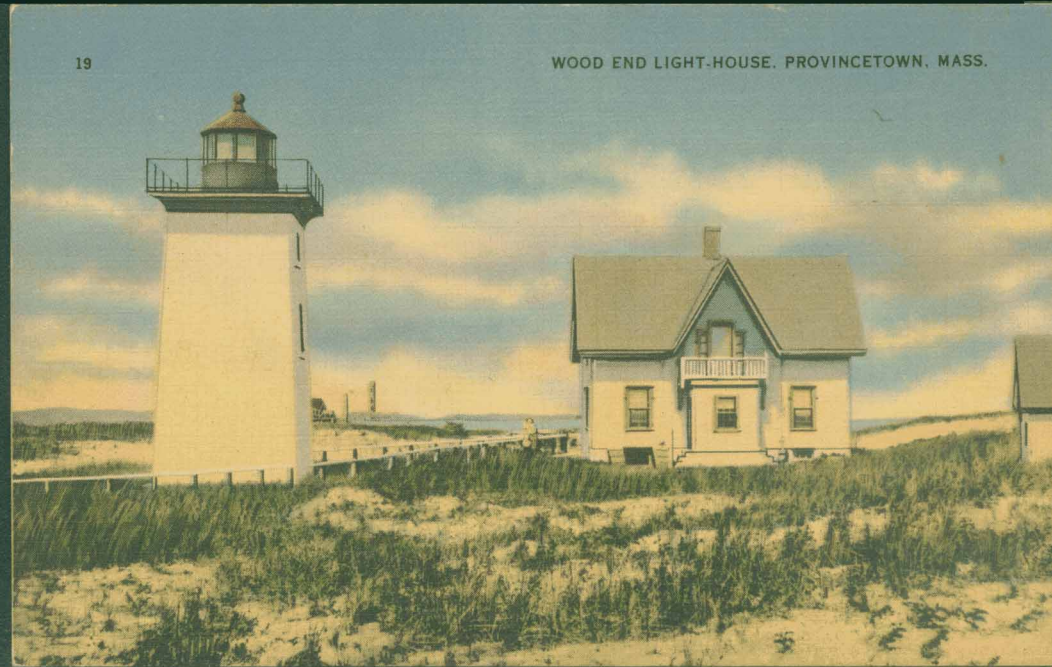


39. WOOD END LIGHT AND COAST GUARD STATION, PROVINCETOWN, MASS.

66503

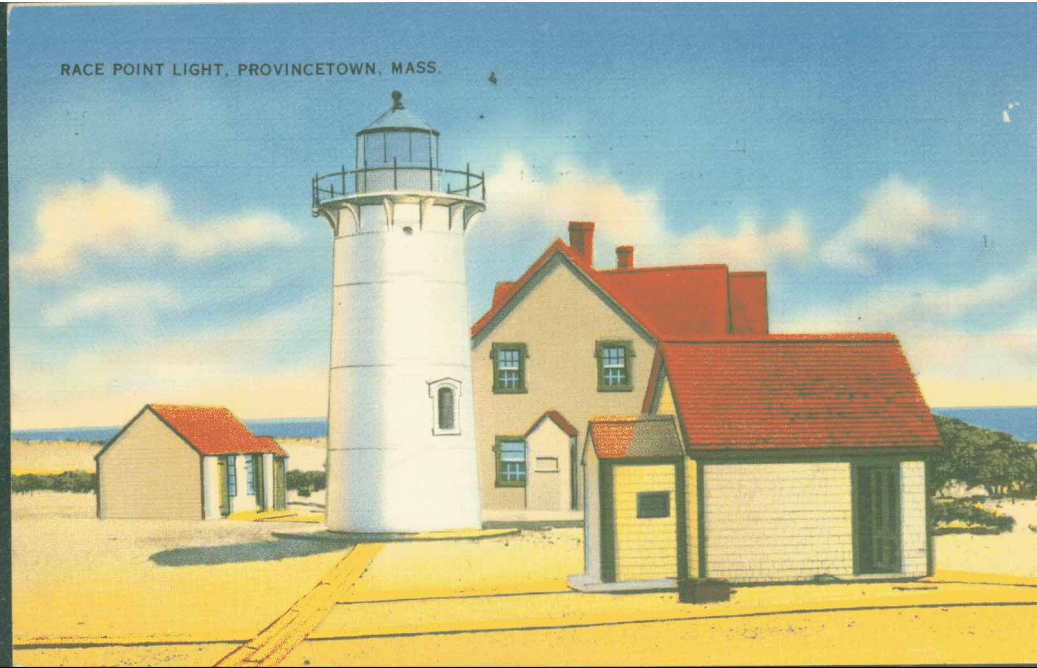
19

WOOD END LIGHT-HOUSE. PROVINCETOWN, MASS.

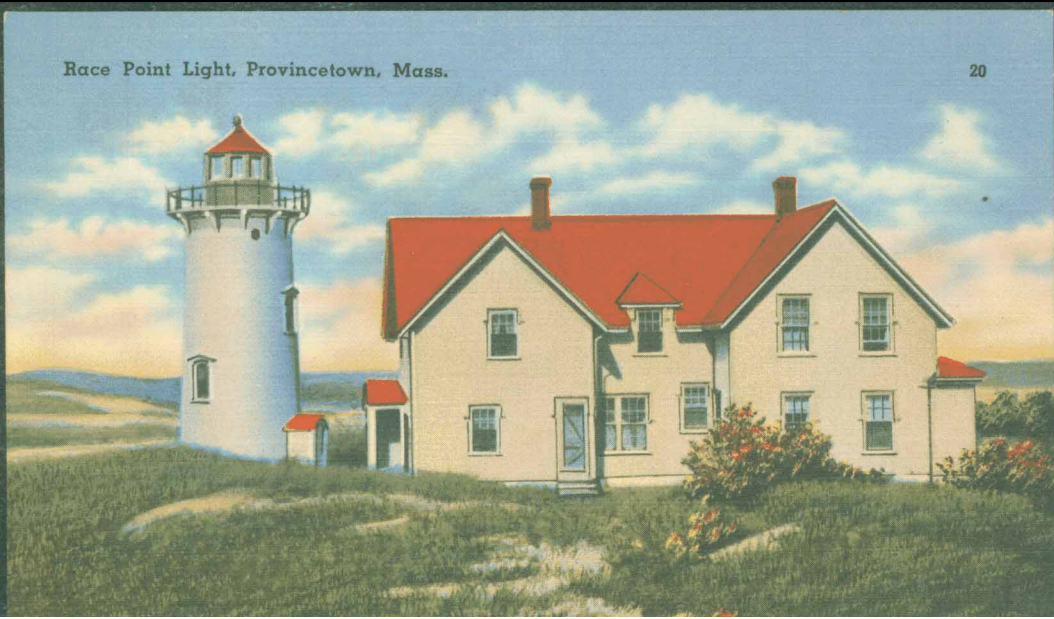




Race Point Light, Provincetown, Mass.

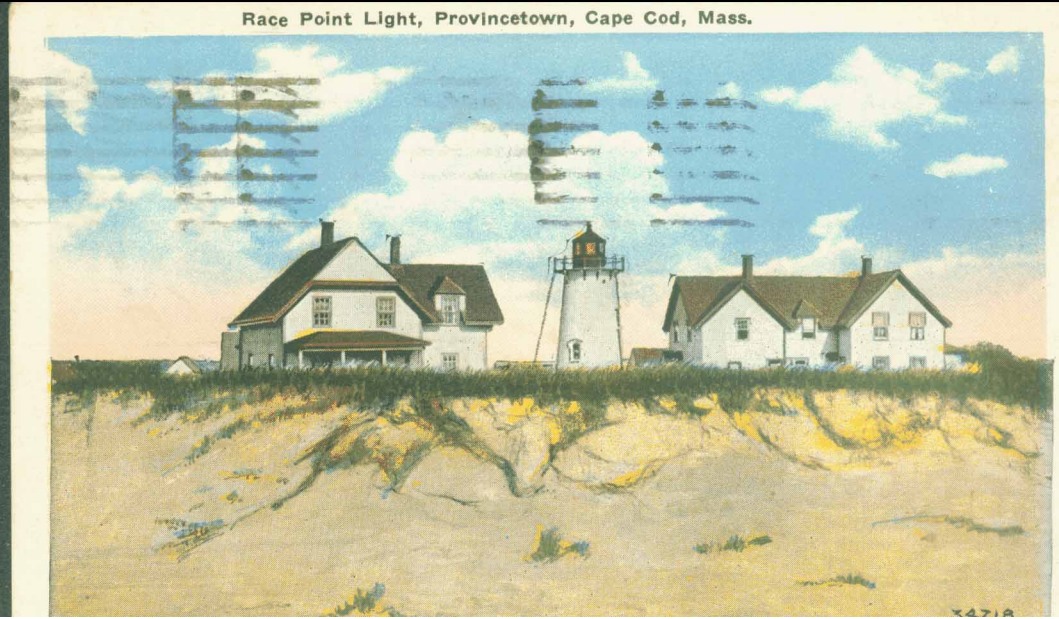


RACE POINT LIGHT, PROVINCETOWN, MASS.



Race Point Light, Provincetown, Mass.

20



Race Point Light, Provincetown, Cape Cod, Mass.

X4718



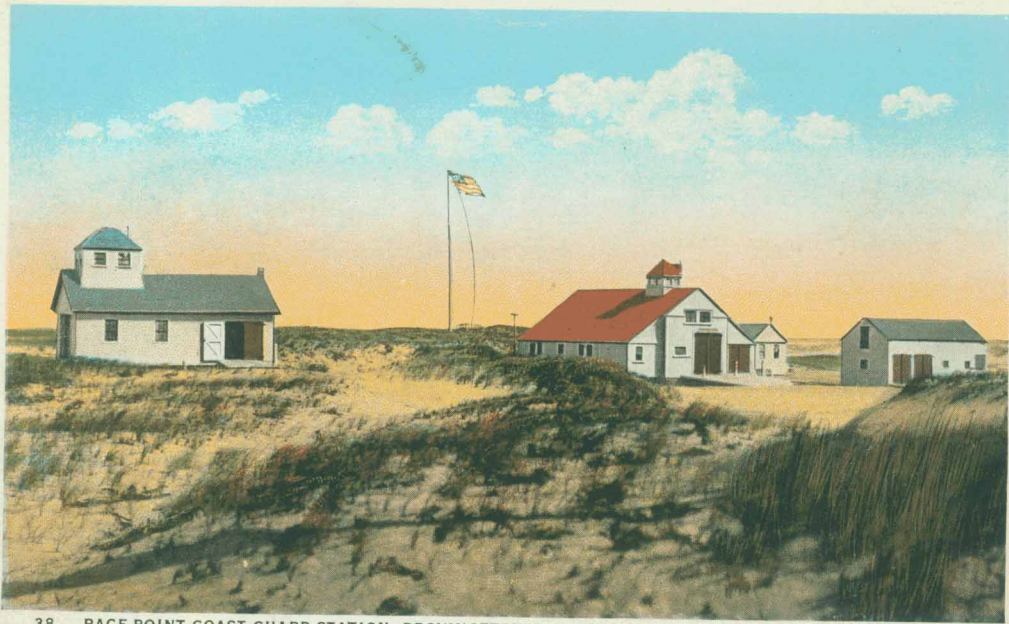
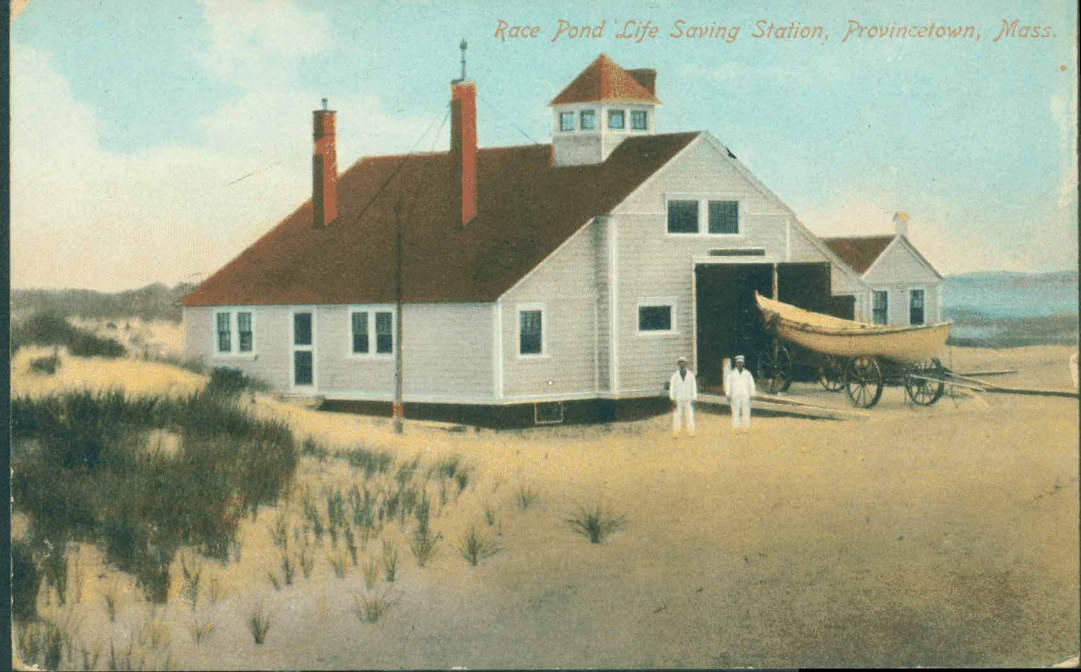
Race Point Light, Provincetown, Mass.

Vacationing in this town. A. B. Anthony

Race Point Life Saving Station. Boat House & Main Building, Provincetown, Mass.



Race Pond Life Saving Station, Provincetown, Mass.



38. RACE POINT COAST GUARD STATION, PROVINCETOWN, CAPE COD, MASS.

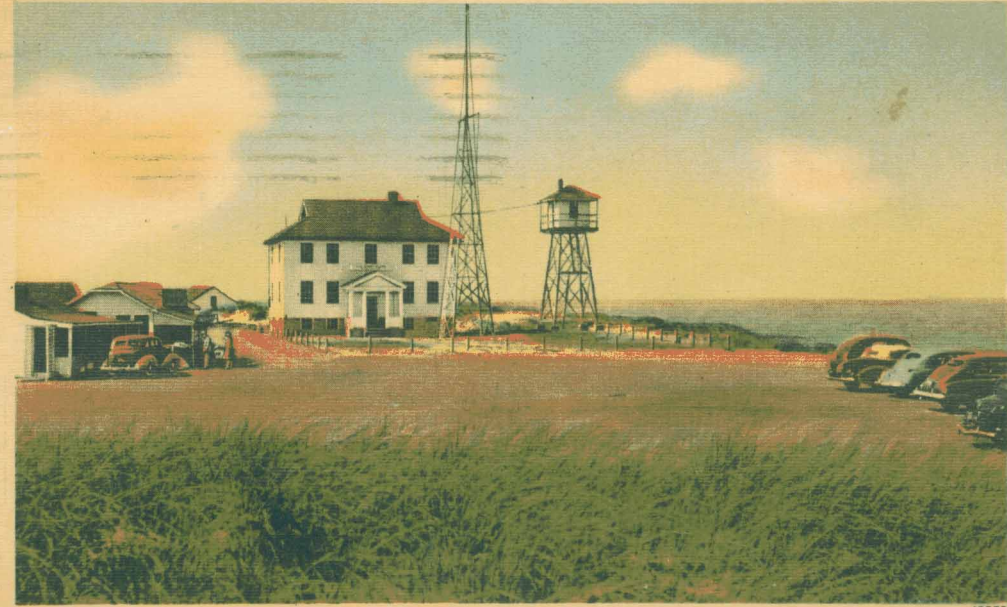
95246



RACE POINT COAST GUARD STATION. RACE POINT, CAPE COD, MASS.

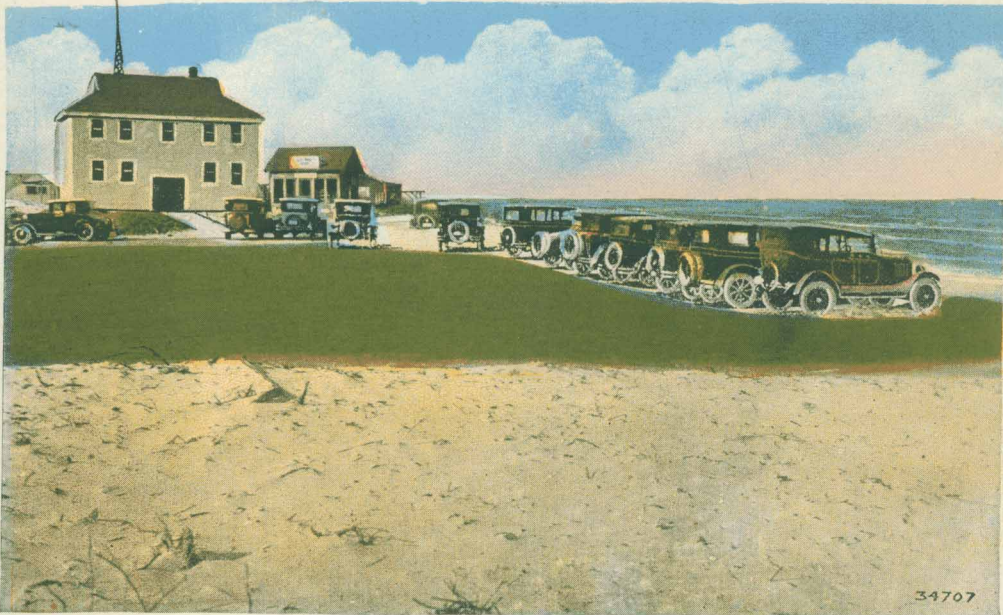


LIFE SAVING STATION AT RACE POINT, PROVINCETOWN, CAPE COD



49572

Race Point Coast Guard Station, Provincetown, Cape Cod, Mass.



34707

U. S. Coast Guard Station, Race Point, Provincetown, Mass.

17







Indian Trail. Road to Race Point Light,
Provincetown, Mass.

View from Town Hall looking East,
Provincetown, Mass.



View from Town Hill showing Town Hall,
Provincetown, Mass.



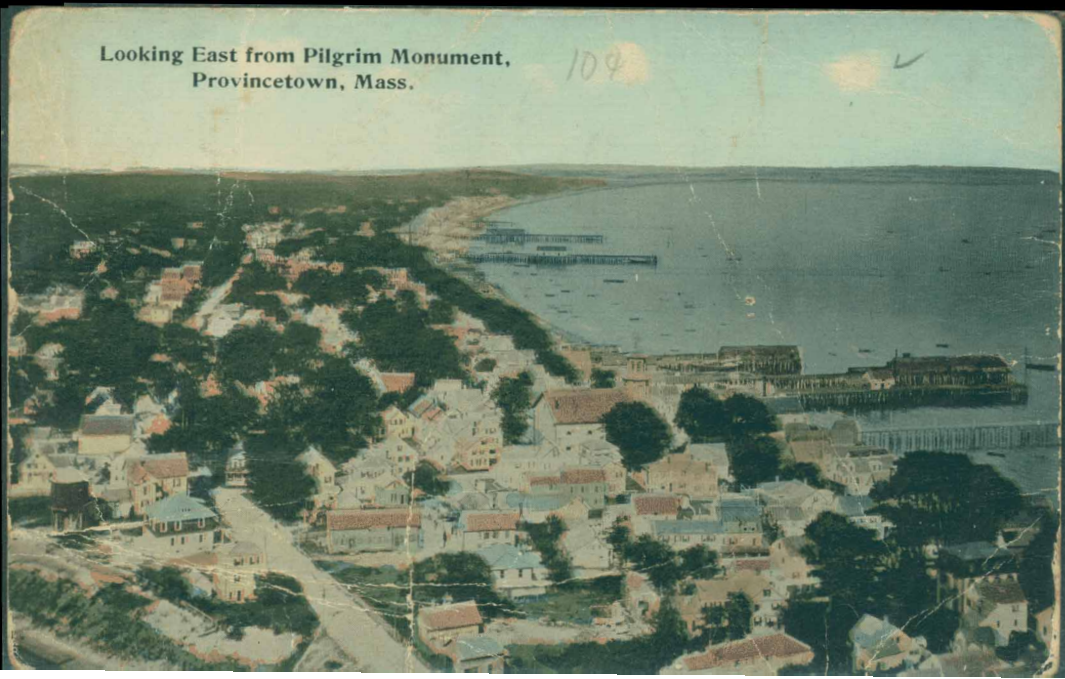
Harbor from Town Hill, Provincetown, Mass.



BIRDS-EYE-VIEW OF PROVINCETOWN, SHOWING PIER, PROVINCETOWN, MASS.

Looking East from Pilgrim Monument,
Provincetown, Mass.

109



Harbor View, Provincetown, Mass.



c. 1885 - Provincetown from Centre Church



Harbor and Wharf, from Pilgrim Memorial Monument,
Provincetown, Mass.



BIRD'S EYE VIEW LOOKING WEST FROM PILGRIM MEMORIAL MONUMENT, PROVINCETOWN, MASS.





Copyright 1906 by the Rotograph Co.

A 6855 The Harbor, Provincetown, Mass.

7/21, 06. Dear ma went sailing this morning very calm. Do not think I'd like Rain R.P.



Harbor View from Gifford House, Provincetown, Mass.



1920

VIEW FROM PILGRIM MEMORIAL MONUMENT, PROVINCETOWN, MASS.







Looking West, from Pilgrim Memorial Monument, Provincetown, Mass.



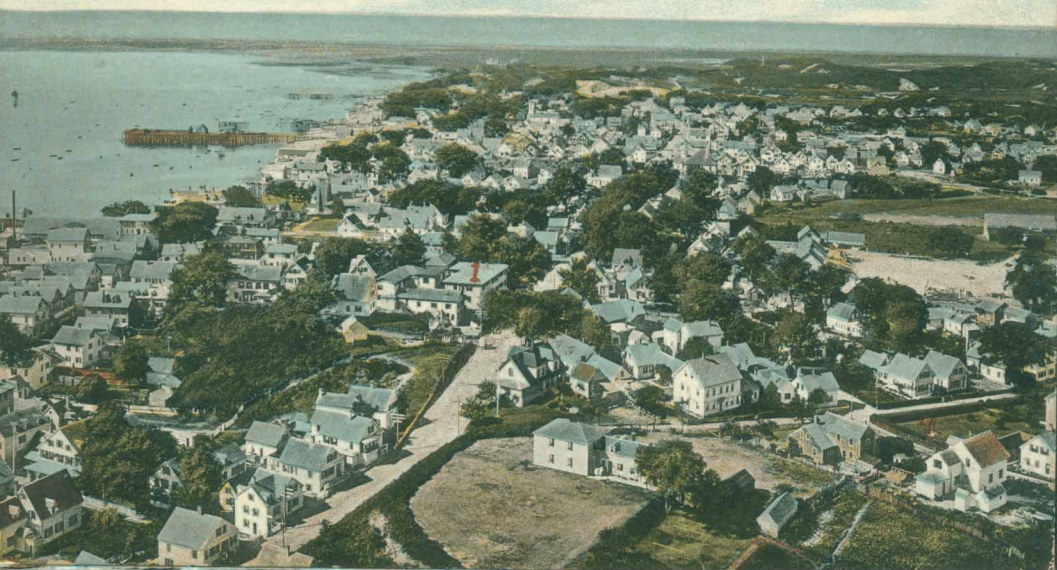
LOOKING EAST FROM PILGRIM MEMORIAL MONUMENT, PROVINCETOWN, MASS.

PROVINCETOWN HARBOR. FROM PILGRIM MEMORIAL MONUMENT. PROVINCETOWN, MASS.



Provincetown, Mass., East End.

Bird's Eye View West from Pilgrim Memorial Monument, Provincetown, Mass.



VIEW FROM PILGRIM MEMORIAL MONUMENT, PROVINCETOWN, MASS.



BIRDS-EYE-VIEW, WEST FROM PILGRIM MEMORIAL MONUMENT. PROVINCETOWN, MASS





COURT ST. HURRICANE Sept. 18. 1944



Near Ark. Assoc. Building Sept. 14. 1944



MELLEY'S CORNER

SEPT 14-1944





Center St. Conn.

Sept 19 - 1944





Max's Logging Station



Fuller's -

9-14-44



Max's Logging Sta













1. Castle - "Murchisons"
2. Red Inn







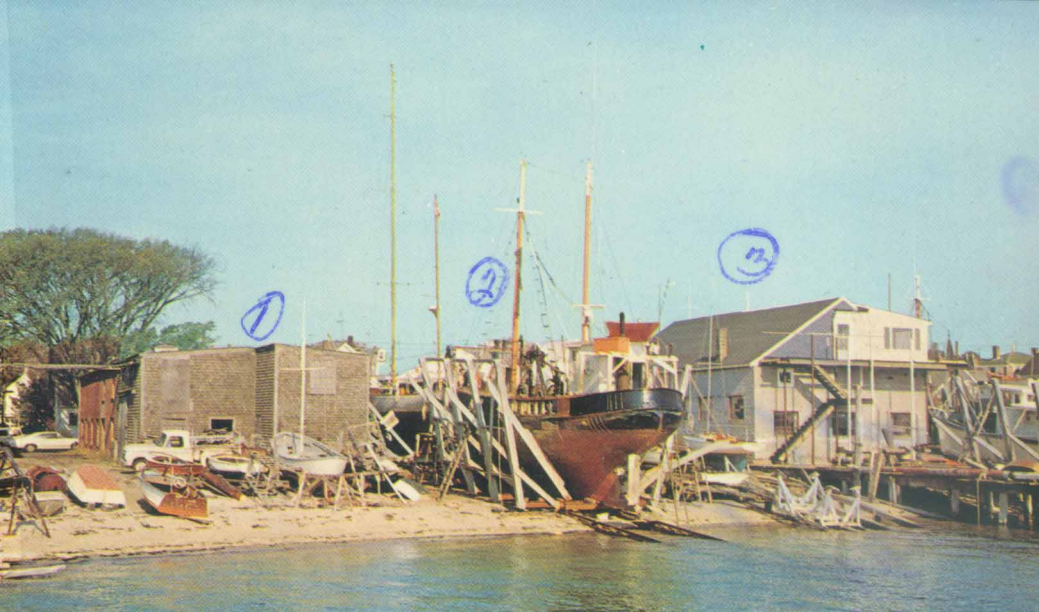




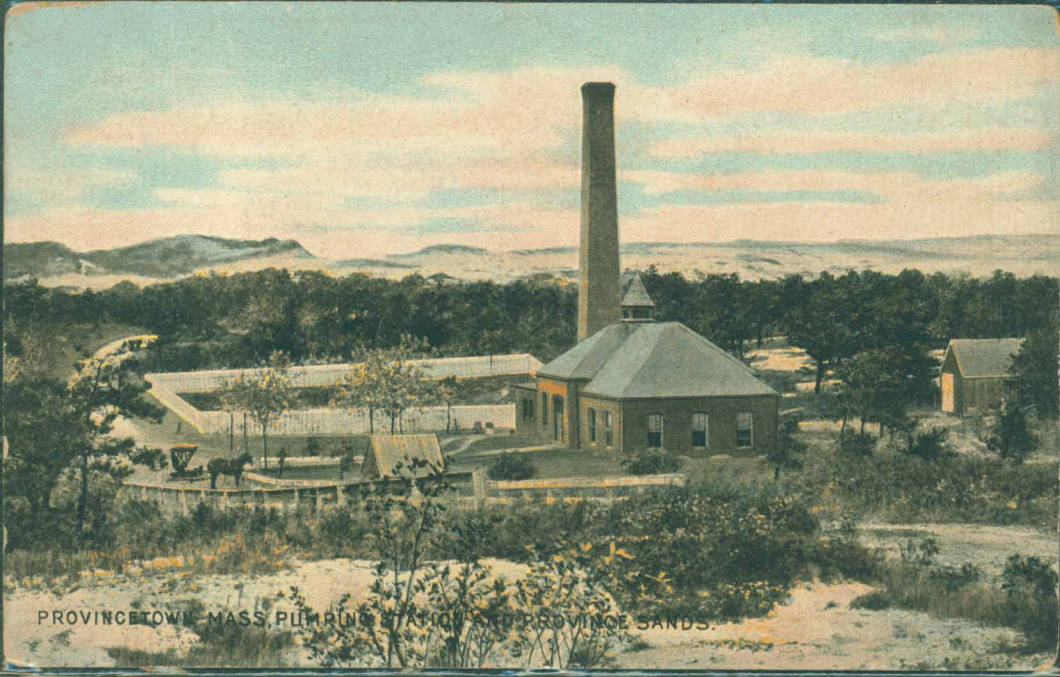
Cape Cod Cold
Storage Co.,
Provincetown,
Mass.











PROVINCETOWN, MASS. PUMPING STATION AND PROVINCE SANDS.



7949. WATER FRONT, PROVINCETOWN, MASS.

DETROIT PHOTOGRAPHIC CO., PUBLISHERS

I thank you for the postal. It was very
pretty indeed. This is a
reminder of P'town.
M.A.M.



Ship Yard, Provincetown, Mass.

