

Picturesque Cape Cod

A
Souvenir
Book



CAPE COD.

Cape Cod has its attractions for fisherman, yachtman, bather, hiker, golfer, horseman, farmer, artist, hunter, motorist and one desiring complete rest. The Cape is now severed from the mainland by the Cape Cod Canal, crossing the head of Buzzards Bay to Cape Cod Bay.

The Bay Shore Highway runs from Sagamore, across the Canal to Orleans. Wooded hills are seen after leaving Sagamore; farms and villages pass in rapid succession, with stately elms adding to their quaintness. Occasionally a picturesque windmill is seen, for these are still used on old Cape Cod farms.

A trip off the highway displays some of New England's finest farms. Cape Cod has the largest single farm east of the Mississippi River. This surprises many who imagined Cape Cod to have sandy, barren soil.

From Orleans to the tip of the Cape is one of New England's most fascinating sections. Here the Cape is less than six miles in width. Nearby is Eastham, which town the Pilgrims honored by considering an immigration from Plymouth to Eastham.

Near Eastham is the Nauset Beach Life Saving Station, starting point for hiking up that wild Atlantic coast. Thirty miles from here, over slopes of sand, is the Race Point Station, beyond Provincetown.

At the tip of the Cape we find the sand dunes, and quaint historic Provincetown with its old wharves, narrow streets, weather-beaten houses and groups of artists. A view from Pilgrim Tower is worth the trip to Provincetown. Here the Pilgrims first dropped anchor in the New World, and aboard the Mayflower the Compact was signed.

To return to the Canal we go back to Orleans, and then over the South Shore road, passing forests, fresh water ponds, and arriving on Pleasant Bay, near Chatham. Reaching South Harwich, Harwichport and West Harwich we notice the lack of shade trees. Yarmouth and Hyannis are then visited. Hyannis' main street is called "Cape Cod's Fifth Avenue."

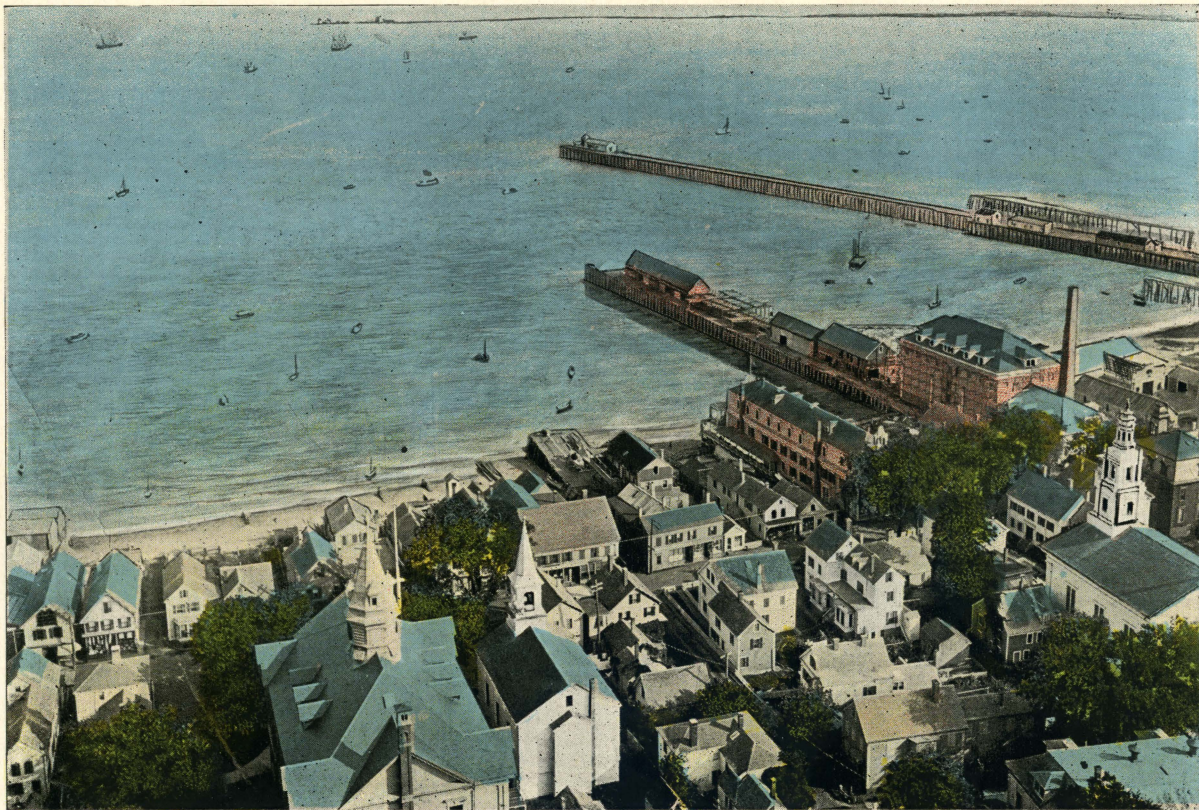
Following the road through Falmouth we reach Woods Hole, whose harbor is the busiest on the Cape, with its railroad terminal, which connects with Marthas Vineyard, and Nantucket Steamers, U. S. Naval Station and U. S. Marine Laboratory. North of Falmouth the road leads to the Canal and Buzzards Bay, where the Cape ends.

CAPE COD



NEW CENTRAL HOUSE AND PILGRIM MEMORIAL MONUMENT FROM WATERFRONT,
PROVINCETOWN, MASS.

CAPE COD



BIRD'S-EYE VIEW OF PROVINCETOWN, MASS., FROM PILGRIM MEMORIAL MONUMENT,

CAPE COD



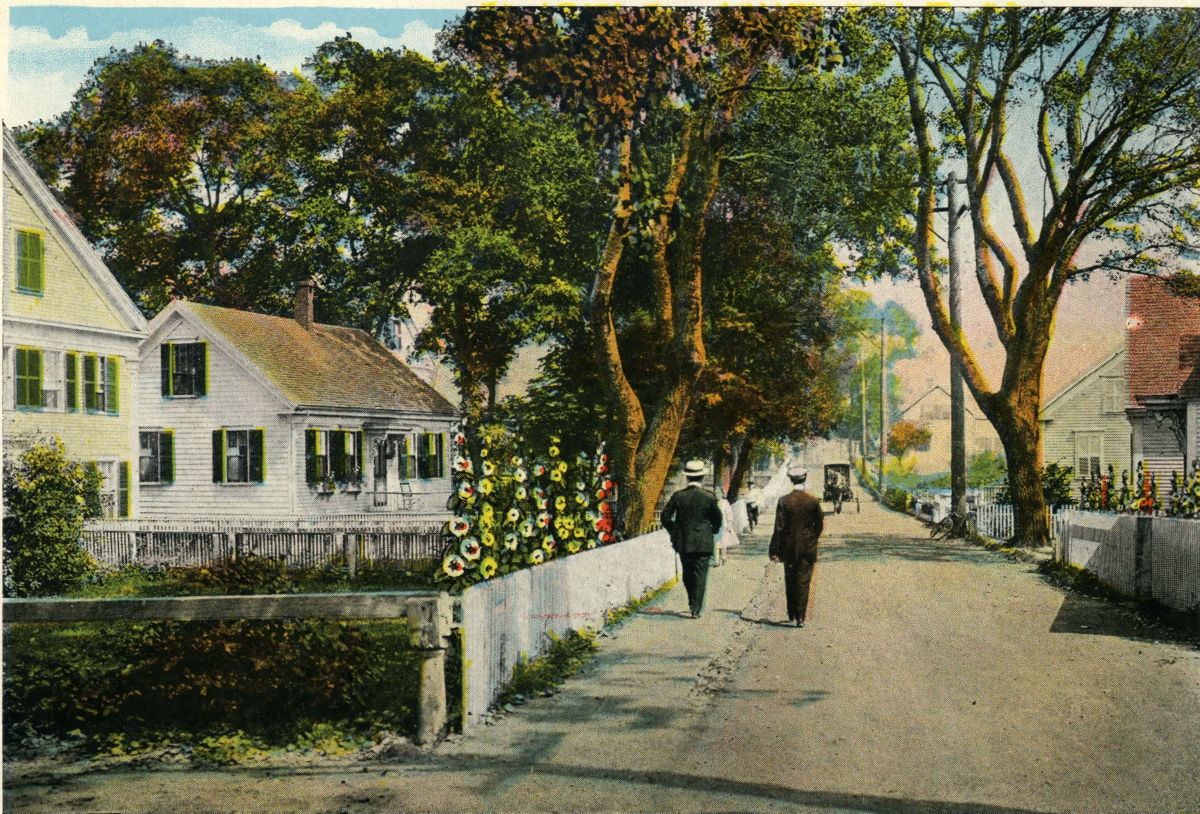
PILGRIMS SIGNING THE COMPACT IN CABIN OF THE MAYFLOWER.
PROVINCETOWN, MASS.

CAPE COD



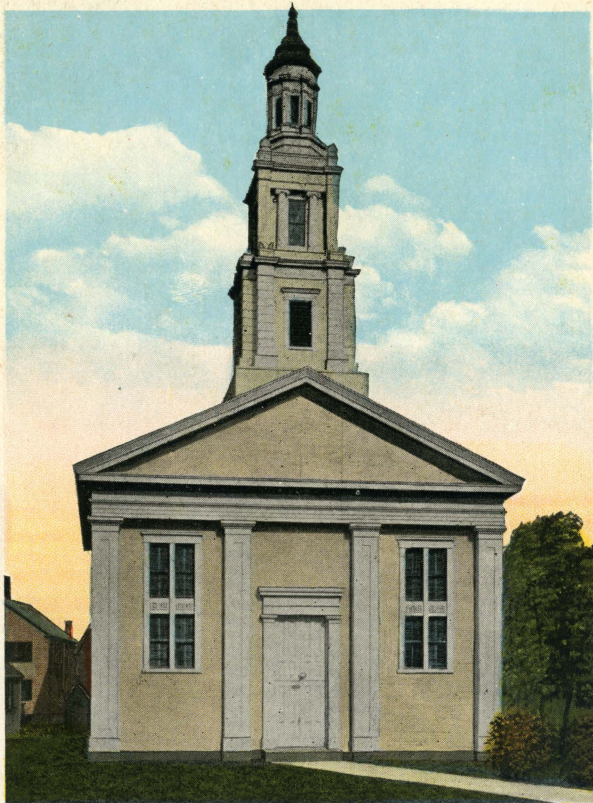
SAND DUNES, PROVINCETOWN, MASS.

CAPE COD

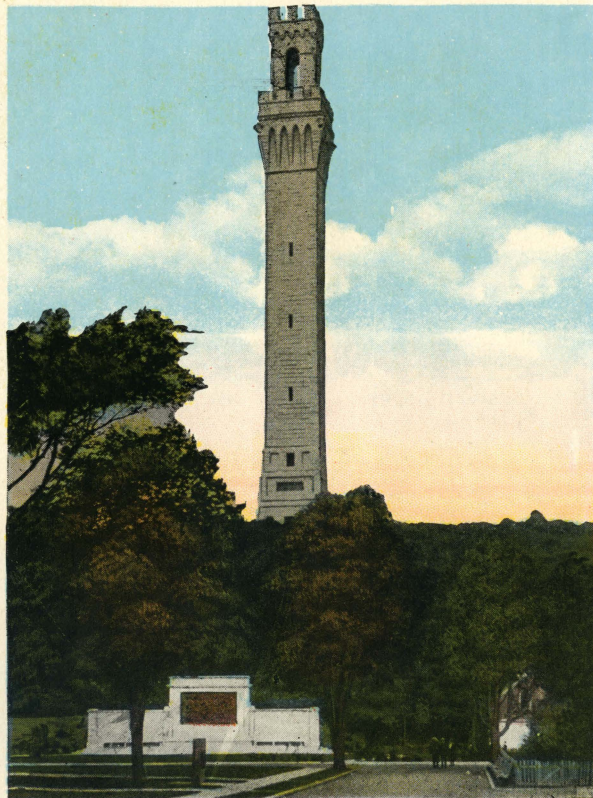


'WAY UP ALONG WEST END, PROVINCETOWN, MASS.

CAPE COD

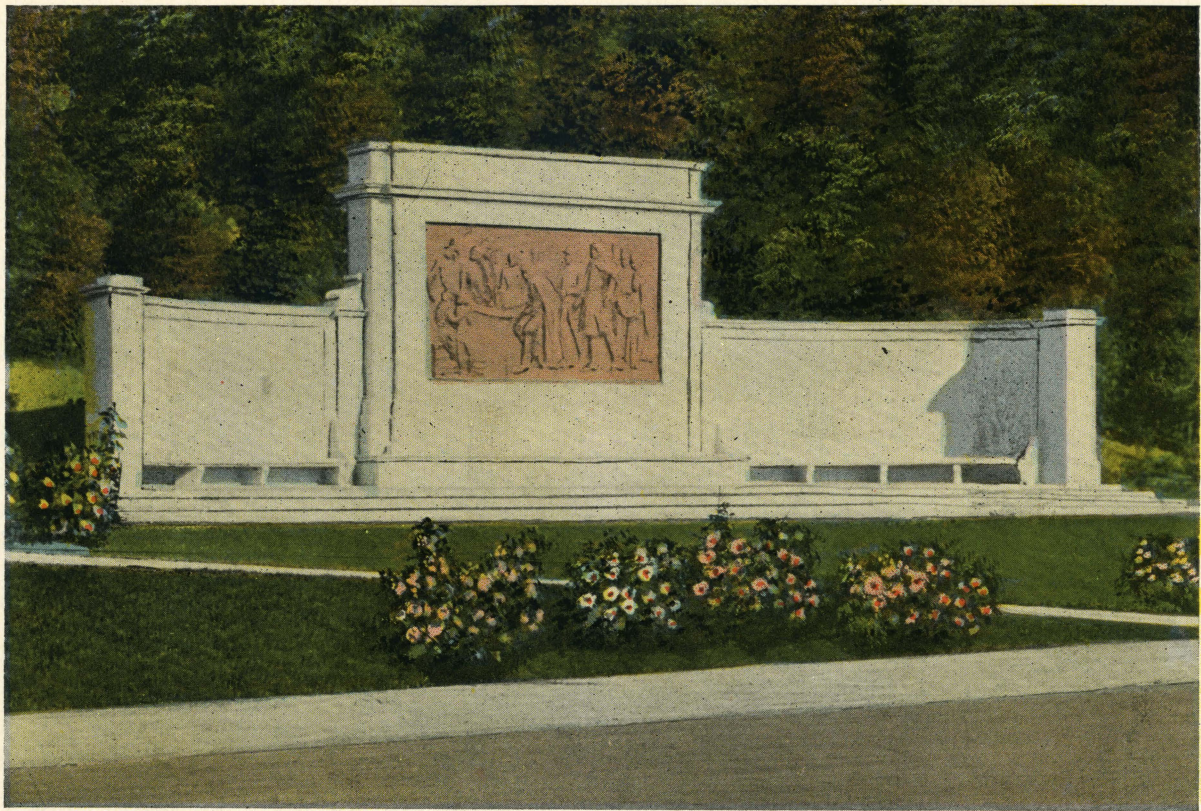


UNIVERSALIST CHURCH, SHOWING
SIR CHRISTOPHER WREN TOWER,
PROVINCETOWN, MASS.



PILGRIM MEMORIAL MONUMENT

CAPE COD



BAS RELIEF TABLET, PROVINCETOWN, MASS.

CAPE COD



WOOD END LIGHT HOUSE, BY MOONLIGHT,
PROVINCETOWN, MASS.



RACE POINT LIGHT, PROVINCETOWN, MASS.

CAPE COD



LONG POINT LIGHT ON TIP END OF CAPE COD,
PROVINCETOWN, MASS.



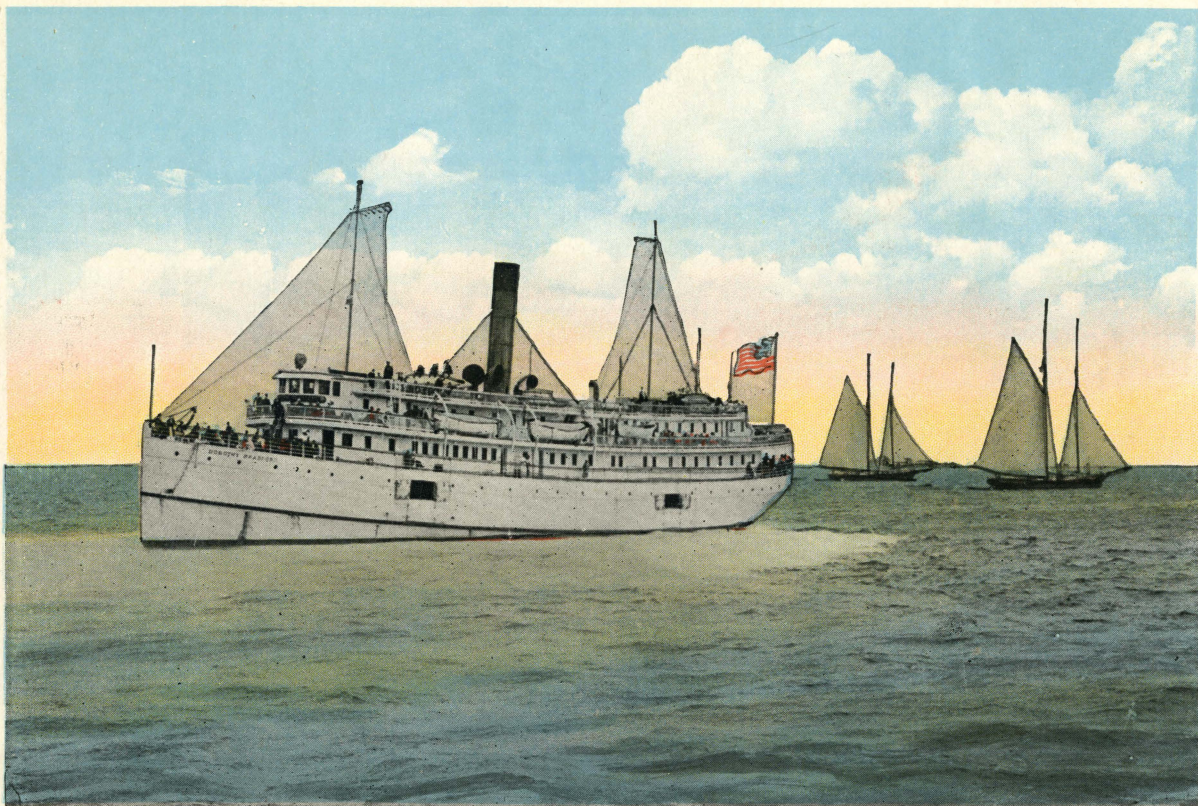
HIGHLAND LIGHT, NORTH TRURO, MASS.

CAPE COD



THE OLDEST WINDMILL ON CAPE COD.

CAPE COD



STEAMER LEAVING FOR BOSTON, PROVINCETOWN, MASS.

CAPE COD



BATHING BEACH, PROVINCETOWN, MASS.

CAPE COD



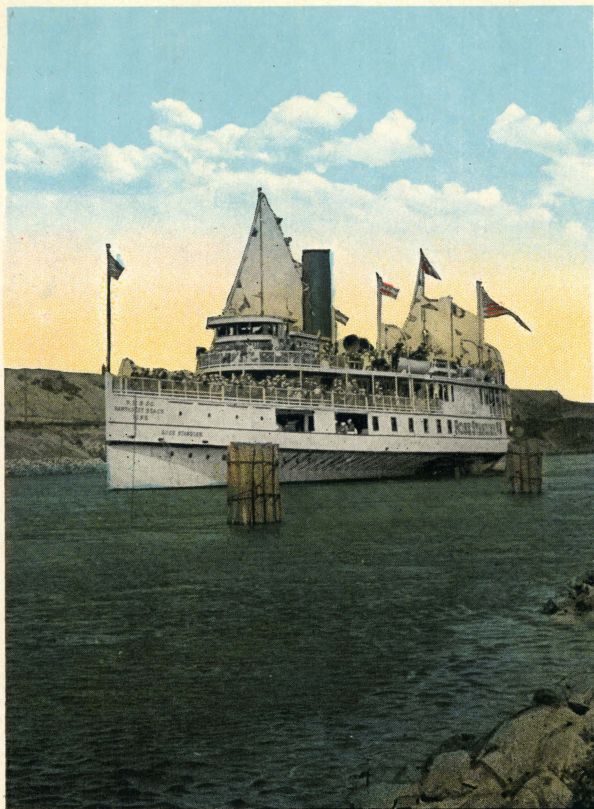
A CLASS OF ARTISTS AT WORK ON THE BEACH, PROVINCETOWN, MASS.

CAPE COD

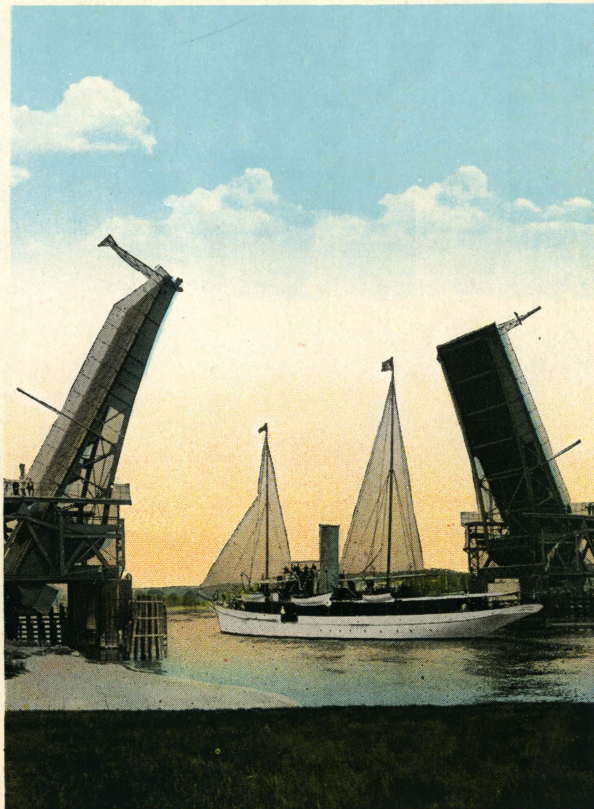


THE BLUFFS AT HIGHLAND LIGHT, NORTH TRURO, MASS.

CAPE COD



NEW YORK BOAT, CAPE COD CANAL.



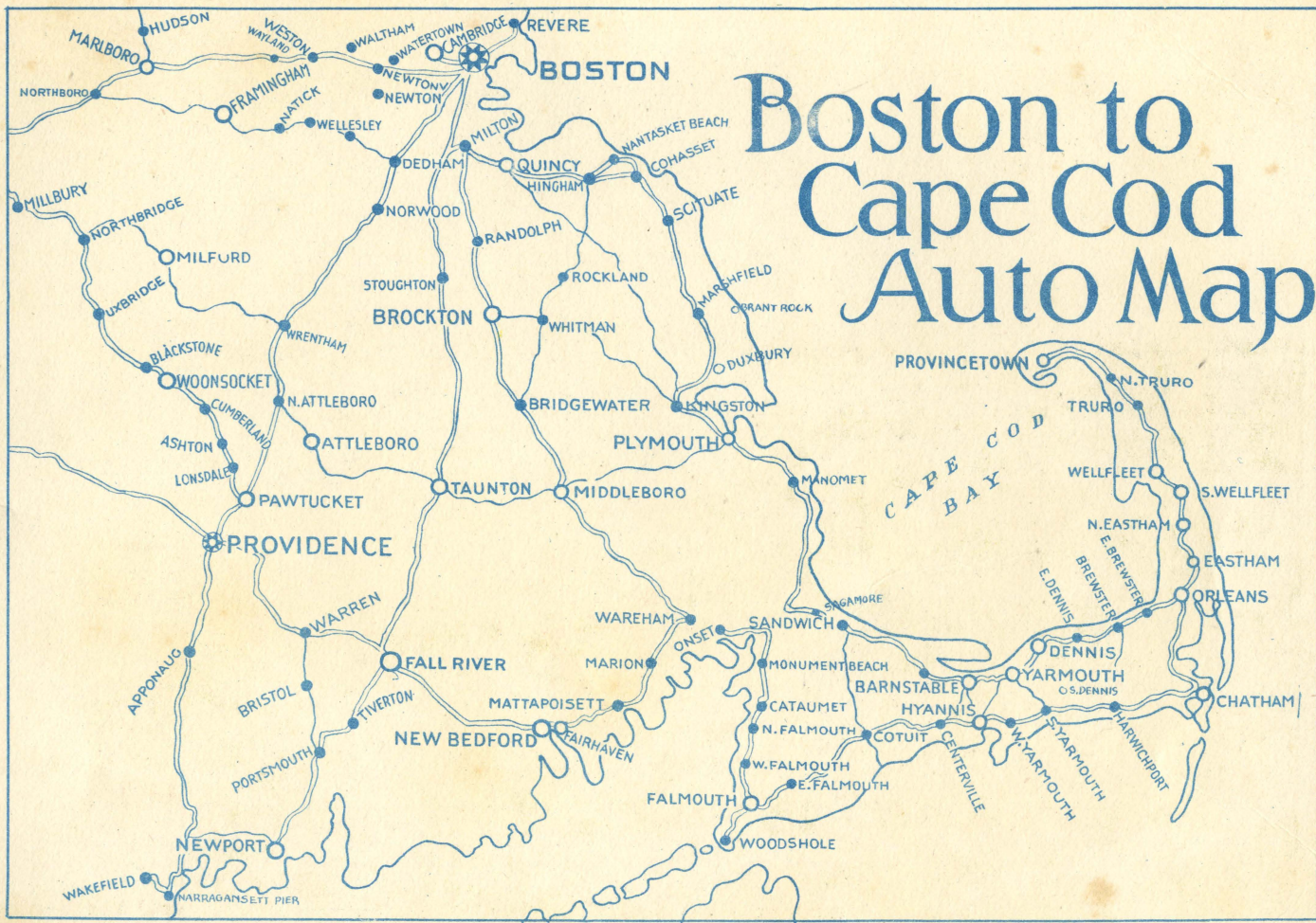
DRAW BRIDGE, CAPE COD CANAL.

CAPE COD



HARBOR VIEW, PROVINCETOWN, MASS.

Boston to Cape Cod Auto Map



Looking East from Pilgrim Monument, Provincetown, Mass.

