

#49

THESE PICTURES WERE MADE AND PRINTED IN  
PROVINCETOWN IN 1901. IT WAS THE STYLE THEN

TO MOUNT THEM ON MUSLIN FOR A SOFA PILLOW  
WITH LACE BEADING BETWEEN, IN WHICH BLUE  
RIBBON WAS RUN, AND A LARGE RUFFLE EDGED WITH

LACE AND RIBBON. IF SOMEONE WOULD MAKE UP  
SUCH A PILLOW I KNOW IT WOULD BE MOST  
INTERESTING. OR THEY CAN BE TRIMMED AND MOUNTED  
ON CARDBOARD.







#41

THESE PICTURES WERE MADE AND PRINTED IN  
PROVINCETOWN IN 1901. IT WAS THE STYLE THEN

TO MOUNT THEM ON MUSLIN FOR A SOFA PILLOW  
WITH LACE BEADING BETWEEN, IN WHICH BLUE  
RIBBON WAS RUN, AND A LARGE RUFFLE EDGED WITH

LACE AND RIBBON. IF SOMEONE WOULD MAKE UP

SUCH A PILLOW I KNOW IT WOULD BE MOST  
INTERESTING. OR THEY CAN BE TRIMMED AND MOUNTED  
ON CARDBOARD.





#44

THESE PICTURES WERE MADE AND PRINTED IN  
PROVINCETOWN IN 1901. IT WAS THE STYLE THEN

TO MOUNT THEM ON MUSLIN FOR A SOFA PILLOW  
WITH LACE BEADING BETWEEN, IN WHICH BLUE  
RIBBON WAS RUN, AND A LARGE RUFFLE EDGED WITH

LACE AND RIBBON. IF SOMEONE WOULD MAKE UP

SUCH A PILLOW I KNOW IT WOULD BE MOST  
INTERESTING. OR THEY CAN BE TRIMMED AND MOUNTED  
ON CARDBOARD.





#41

THESE PICTURES WERE MADE AND PRINTED IN  
PROVINCETOWN IN 1901. IT WAS THE STYLE THEN

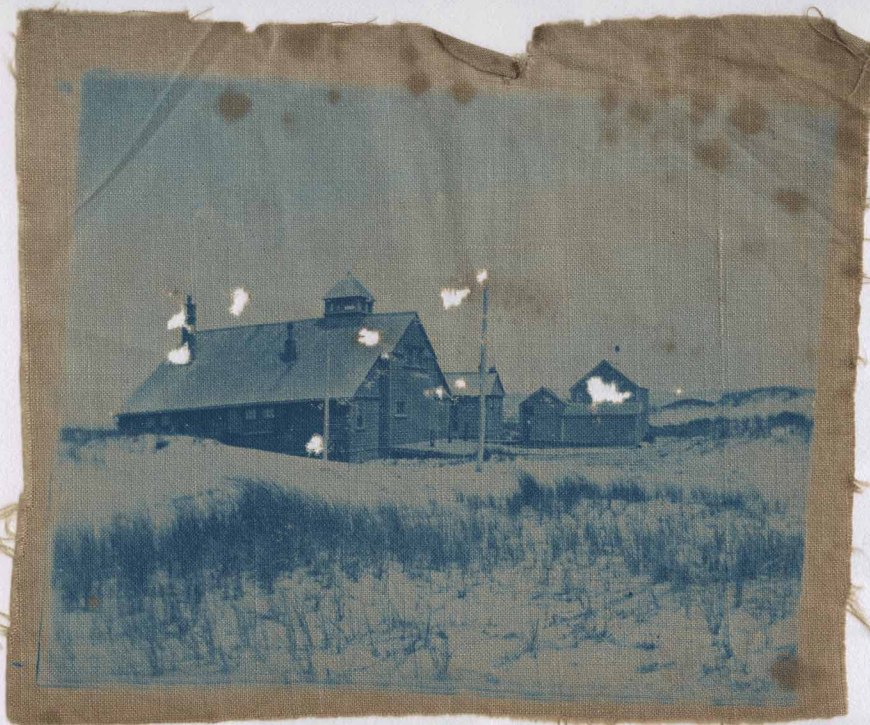
TO MOUNT THEM ON MUSLIN FOR A SOFA PILLOW  
WITH LACE BEADING BETWEEN, IN WHICH BLUE  
RIBBON WAS RUN, AND A LARGE RUFFLE EDGED WITH

LACE AND RIBBON. IF SOMEONE WOULD MAKE UP

SUCH A PILLOW I KNOW IT WOULD BE MOST  
INTERESTING. OR THEY CAN BE TRIMMED AND MOUNTED  
ON CARDBOARD.







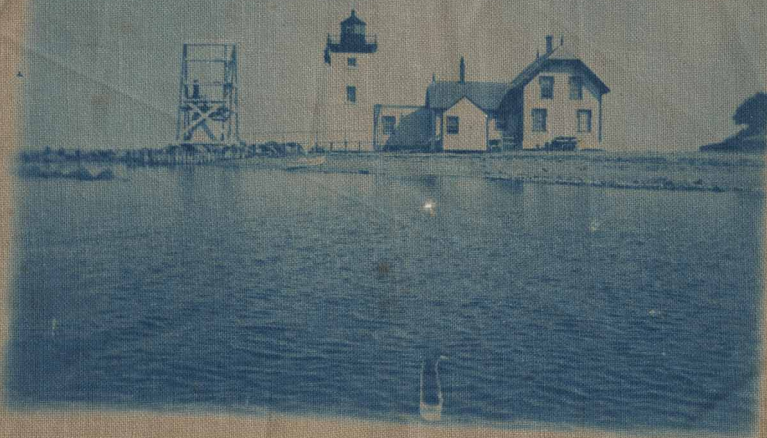
#4

THESE PICTURES WERE MADE AND PRINTED IN  
PROVINCETOWN IN 1901. IT WAS THE STYLE THEN

TO MOUNT THEM ON MUSLIN FOR A SOFA PILLOW  
WITH LACE BEADING BETWEEN, IN WHICH BLUE  
RIBBON WAS RUN, AND A LARGE RUFFLE EDGED WITH

LACE AND RIBBON. IF SOMEONE WOULD MAKE UP  
SUCH A PILLOW I KNOW IT WOULD BE MOST  
INTERESTING. OR THEY CAN BE TRIMMED AND MOUNTED  
ON CARDBOARD.





#44

THESE PICTURES WERE MADE AND PRINTED IN  
PROVINCETOWN IN 1901. IT WAS THE STYLE THEN

TO MOUNT THEM ON MUSLIN FOR A SOFA PILLOW  
WITH LACE BEADING BETWEEN, IN WHICH BLUE  
RIBBON WAS RUN, AND A LARGE RUFFLE EDGED WITH

LACE AND RIBBON. IF SOMEONE WOULD MAKE UP

SUCH A PILLOW I KNOW IT WOULD BE MOST  
INTERESTING. OR THEY CAN BE TRIMMED AND MOUNTED  
ON CARDBOARD.





#4

THESE PICTURES WERE MADE AND PRINTED IN  
PROVINCETOWN IN 1901. IT WAS THE STYLE THEN

TO MOUNT THEM ON MUSLIN FOR A SOFA PILLOW  
WITH LACE BEADING BETWEEN, IN WHICH BLUE  
RIBBON WAS RUN, AND A LARGE RUFFLE EDGED WITH

LACE AND RIBBON. IF SOMEONE WOULD MAKE UP

SUCH A PILLOW I KNOW IT WOULD BE MOST  
INTERESTING. OR THEY CAN BE TRIMMED AND MOUNTED  
ON CARDBOARD.





#19

THESE PICTURES WERE MADE AND PRINTED IN  
PROVINCETOWN IN 1901. IT WAS THE STYLE THEN

TO MOUNT THEM ON MUSLIN FOR A SOFA PILLOW  
WITH LACE BEADING BETWEEN, IN WHICH BLUE  
RIBBON WAS RUN, AND A LARGE RUFFLE EDGED WITH

LACE AND RIBBON. IF SOMEONE WOULD MAKE UP  
SUCH A PILLOW I KNOW IT WOULD BE MOST  
INTERESTING. OR THEY CAN BE TRIMMED AND MOUNTED  
ON CARDBOARD.





#49

THESE PICTURES WERE MADE AND PRINTED IN  
PROVINCETOWN IN 1901. IT WAS THE STYLE THEN

TO MOUNT THEM ON MUSLIN FOR A SOFA PILLOW  
WITH LACE BEADING BETWEEN, IN WHICH BLUE  
RIBBON WAS RUN, AND A LARGE RUFFLE EDGED WITH

LACE AND RIBBON. IF SOMEONE WOULD MAKE UP

SUCH A PILLOW I KNOW IT WOULD BE MOST  
INTERESTING. OR THEY CAN BE TRIMMED AND MOUNTED  
ON CARDBOARD.





#44

THESE PICTURES WERE MADE AND PRINTED IN  
PROVINCETOWN IN 1901. IT WAS THE STYLE THEN

TO MOUNT THEM ON MUSLIN FOR A SOFA PILLOW  
WITH LACE BEADING BETWEEN, IN WHICH BLUE  
RIBBON WAS RUN, AND A LARGE RUFFLE EDGED WITH

LACE AND RIBBON. IF SOMEONE WOULD MAKE UP  
SUCH A PILLOW I KNOW IT WOULD BE MOST  
INTERESTING. OR THEY CAN BE TRIMMED AND MOUNTED  
ON CARDBOARD.





#4

THESE PICTURES WERE MADE AND PRINTED IN  
PROVINCETOWN IN 1901. IT WAS THE STYLE THEN

TO MOUNT THEM ON MUSLIN FOR A SOFA PILLOW  
WITH LACE BEADING BETWEEN, IN WHICH BLUE  
RIBBON WAS RUN, AND A LARGE RUFFLE EDGED WITH

LACE AND RIBBON. IF SOMEONE WOULD MAKE UP

SUCH A PILLOW I KNOW IT WOULD BE MOST  
INTERESTING. OR THEY CAN BE TRIMMED AND MOUNTED  
ON CARDBOARD.



#41

THESE PICTURES WERE MADE AND PRINTED IN  
PROVINCETOWN IN 1901. IT WAS THE STYLE THEN

TO MOUNT THEM ON MUSLIN FOR A SOFA PILLOW  
WITH LACE BEADING BETWEEN, IN WHICH BLUE  
RIBBON WAS RUN, AND A LARGE RUFFLE EDGED WITH

LACE AND RIBBON. IF SOMEONE WOULD MAKE UP

SUCH A PILLOW I KNOW IT WOULD BE MOST  
INTERESTING. OR THEY CAN BE TRIMMED AND MOUNTED  
ON CARDBOARD.







#41

THESE PICTURES WERE MADE AND PRINTED IN  
PROVINCETOWN IN 1901. IT WAS THE STYLE THEN

TO MOUNT THEM ON MUSLIN FOR A SOFA PILLOW  
WITH LACE BEADING BETWEEN, IN WHICH BLUE  
RIBBON WAS RUN, AND A LARGE RUFFLE EDGED WITH

LACE AND RIBBON. IF SOMEONE WOULD MAKE UP

SUCH A PILLOW I KNOW IT WOULD BE MOST  
INTERESTING. OR THEY CAN BE TRIMMED AND MOUNTED  
ON CARDBOARD.





#1A

THESE PICTURES WERE MADE AND PRINTED IN  
PROVINCETOWN IN 1901. IT WAS THE STYLE THEN

TO MOUNT THEM ON MUSLIN FOR A SOFA PILLOW  
WITH LACE BEADING BETWEEN, IN WHICH BLUE  
RIBBON WAS RUN, AND A LARGE RUFFLE EDGED WITH

LACE AND RIBBON. IF SOMEONE WOULD MAKE UP  
SUCH A PILLOW I KNOW IT WOULD BE MOST  
INTERESTING. OR THEY CAN BE TRIMMED AND MOUNTED  
ON CARDBOARD.

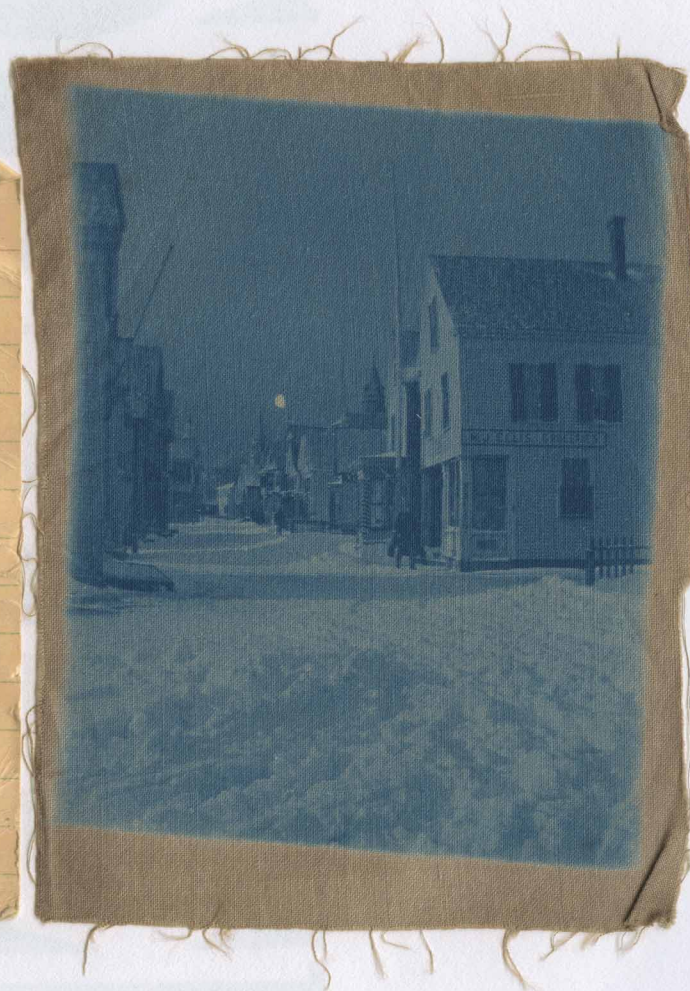


#44

THESE PICTURES WERE MADE AND PRINTED IN  
PROVINCETOWN IN 1901. IT WAS THE STYLE THEN

TO MOUNT THEM ON MUSLIN FOR A SOFA PILLOW  
WITH LACE BEADING BETWEEN, IN WHICH BLUE  
RIBBON WAS RUN, AND A LARGE RUFFLE EDGED WITH

LACE AND RIBBON. IF SOMEONE WOULD MAKE UP  
SUCH A PILLOW I KNOW IT WOULD BE MOST  
INTERESTING. OR THEY CAN BE TRIMMED AND MOUNTED  
ON CARDBOARD.







#41

THESE PICTURES WERE MADE AND PRINTED IN  
PROVINCETOWN IN 1901. IT WAS THE STYLE THEN

TO MOUNT THEM ON MUSLIN FOR A SOFA PILLOW  
WITH LACE BEADING BETWEEN, IN WHICH BLUE  
RIBBON WAS RUN, AND A LARGE RUFFLE EDGED WITH

LACE AND RIBBON. IF SOMEONE WOULD MAKE UP

SUCH A PILLOW I KNOW IT WOULD BE MOST  
INTERESTING. OR THEY CAN BE TRIMMED AND MOUNTED  
ON CARDBOARD.