



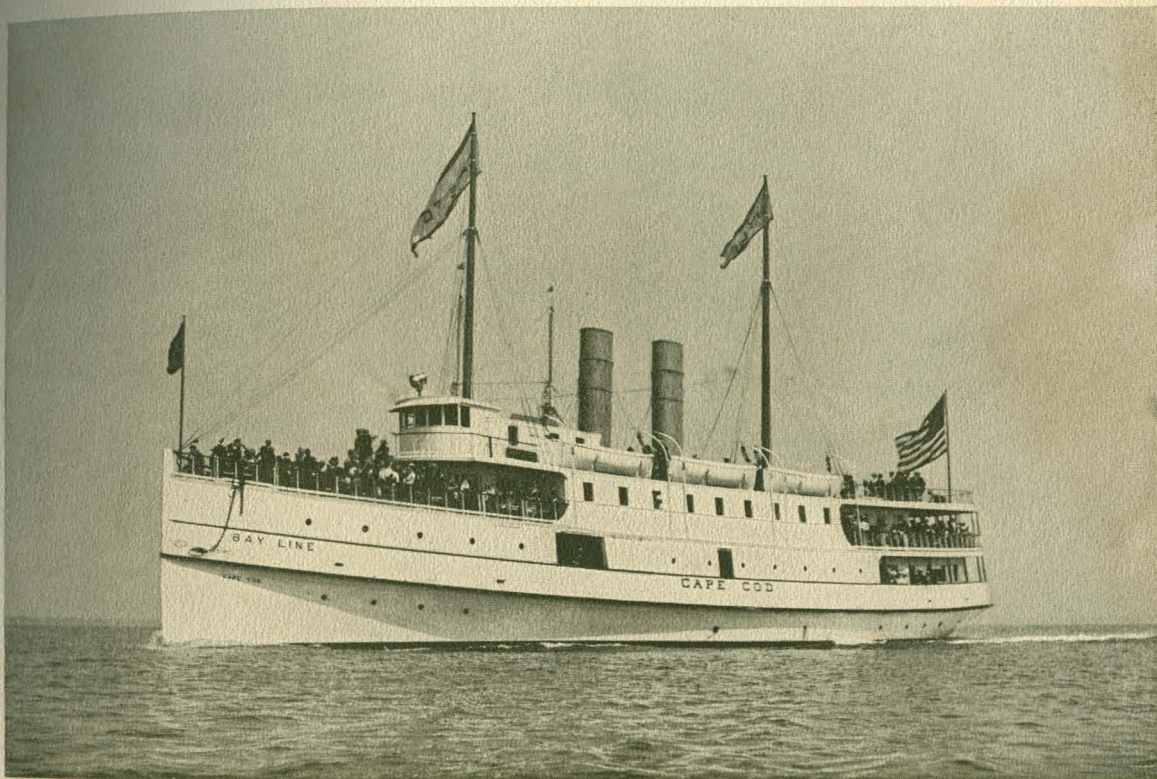
PROVINCETOWN
at the Tip End
of CAPE GOD



PROVINCETOWN *at the*
TIP END *of* CAPE COD

Copyright 1902, by THE PERRY PICTURES COMPANY

THE PERRY PICTURES COMPANY
BOSTON, MASSACHUSETTS



COPYRIGHT, 1902, BY E. A. PERRY.

THE "CAPE COD."

The excursion steamboat between Boston and Provincetown.



RACE POINT LIGHTHOUSE, CAPE COD.

In approaching Provincetown from Boston this lighthouse is passed first.



LONG POINT LIGHT.

The structure at the left of the lighthouse supports the bell used as a signal in the dense fogs which sometimes make it impossible to see the Light.



V I E W F R O M T H E H A R B O R .

In the background is seen Town Hill, on which is to be erected the monument commemorative of the first landing of the Pilgrims on this coast.



COPYRIGHT, 1902, BY E. A. PERRY.

THE SAN FRANCISCO.

THE PRAIRIE.

PROVINCETOWN HARBOR.

Its deep water and sheltered location make it a refuge for vessels in storms.



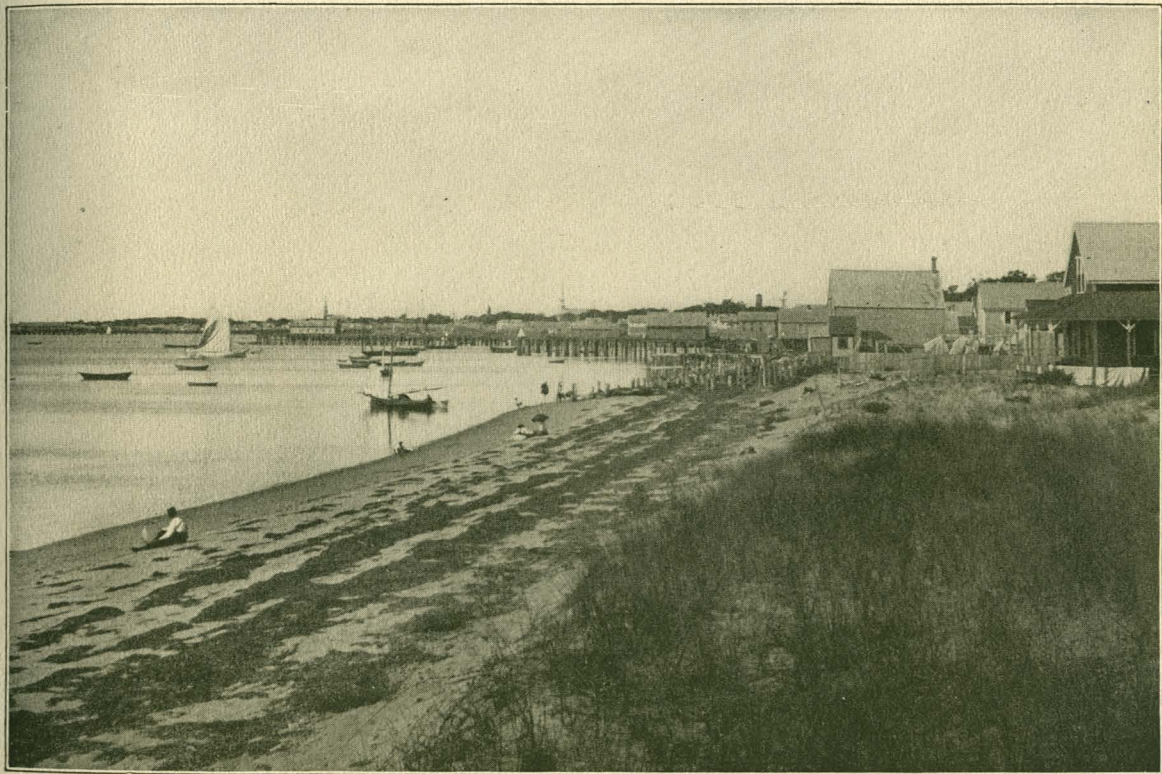
HARBOR, SHOWING BOAT LANDING.

The real "tip end" of Cape Cod is the point of land seen in the distance, on which is the Long Point Light.

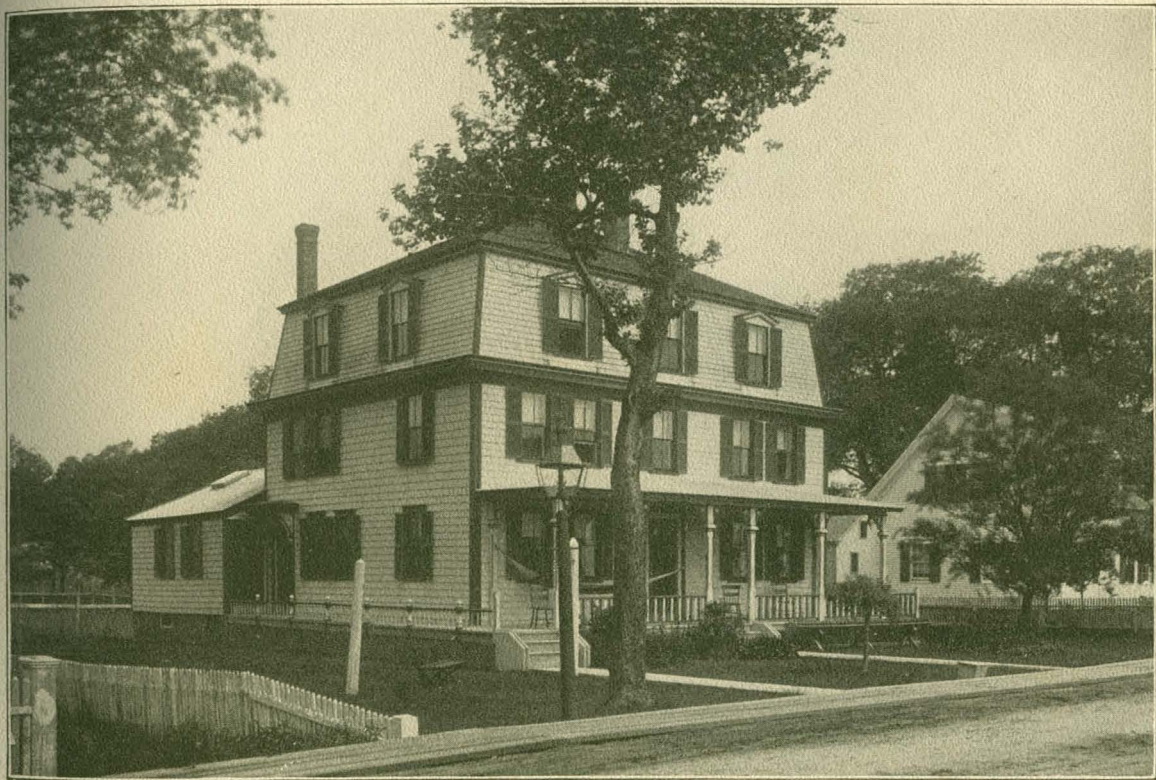


EAST END.

Showing the nearness of the houses to one another. Long ago the street ran along the shore between the houses and the water.



VIEW OF BEACH FROM EAST END, PROVINCETOWN.



Copyright, 1902, by E. A. Perry.

MAYO COTTAGE.



COPYRIGHT, 1905, BY E. A. PERRY.

COMMERCIAL STREET.

In the central part of the town.



COMMERCIAL STREET AND NEW YORK, NEW HAVEN & HARTFORD RAILROAD CROSSING,
PROVINCETOWN.



YACHT LAUNCHING.



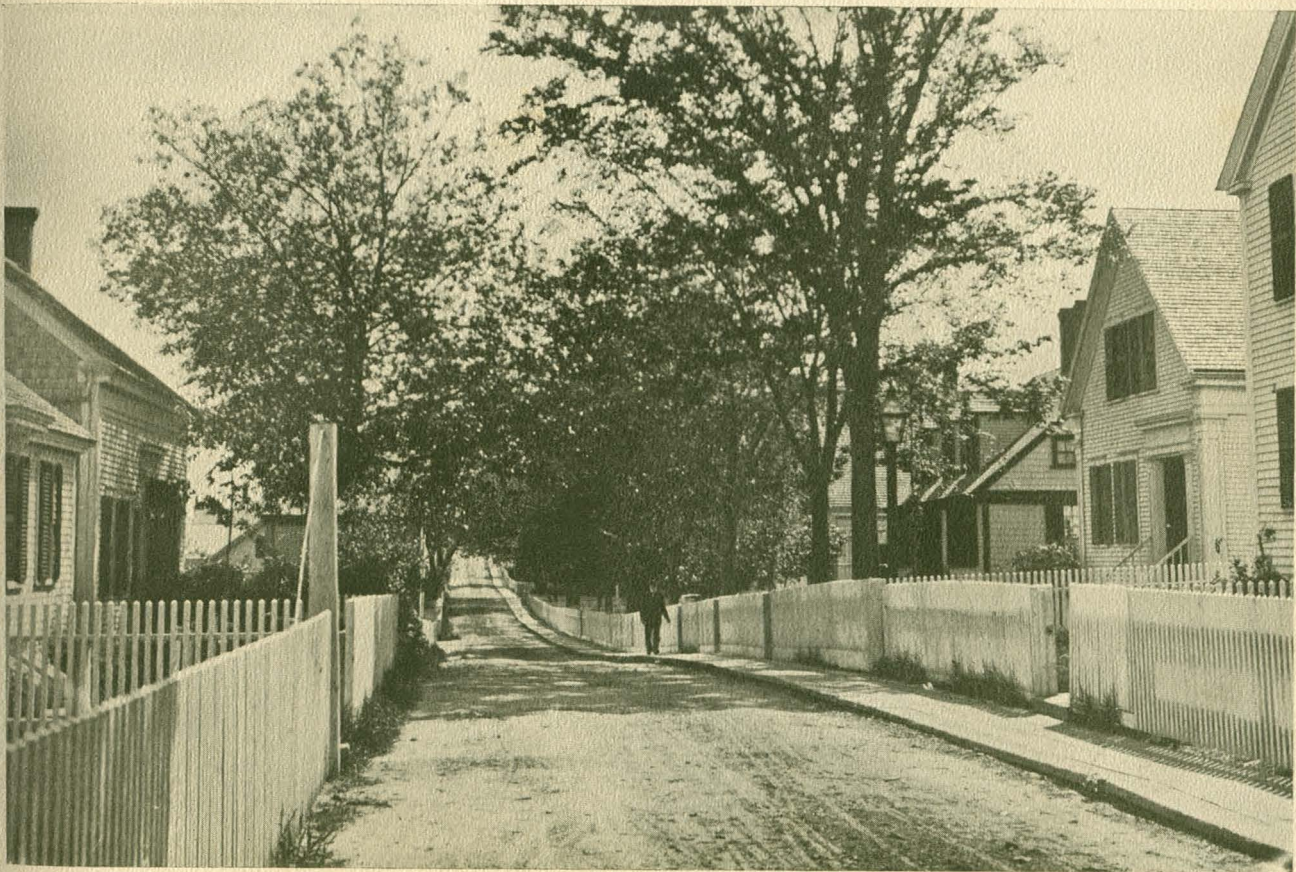
STREET VIEW, WEST END.

This part of Commercial street is called "The Turn." This is the only turn in the street in the three miles it extends.



FISH HOUSES, FISH FLAKES, AND WHARF.

To this wharf come vessels from the Grand Banks every year, bringing codfish. The fish are spread on the flakes to dry.



COMMERCIAL STREET, WEST END.

A typical narrow street, with the plank walk that extends the whole length of the town. Commercial street is the main street of the town.



HIGHLAND LIGHT AND THE CLIFFS.

One of the principal lights on the Atlantic coast, from which all passing vessels are reported.
The action of the waves against the cliffs has compelled the government to move back the lighthouse from time to time.



COPYRIGHT, 1902, BY E. A. PERRY.

PEAKED HILL BAR LIFE-SAVING STATION.

On the ocean side of the Cape. Peaked Hill Bar is one of the most dangerous reefs on this part of the coast. The ocean is seen beyond the station.



OFF TO THE RESCUE.



OUTSIDE THE CAPE.