



PROVINCETOWN
by the Sea



COPYRIGHT, 1900, BY E. A. PERRY.

RACE POINT LIGHT HOUSE.



LONG POINT LIGHT.





COPYRIGHT, 1898, BY E. A. PERRY.

THE SAN FRANCISCO

THE PRAIRIE

PROVINCETOWN HARBOR.



VIEW FROM THE HARBOR.



VIEW FROM THE HARBOR.



STEAMBOAT "LONGFELLOW" APPROACHING THE WHARF.



COPYRIGHT, 1898, BY E. A. PERRY.

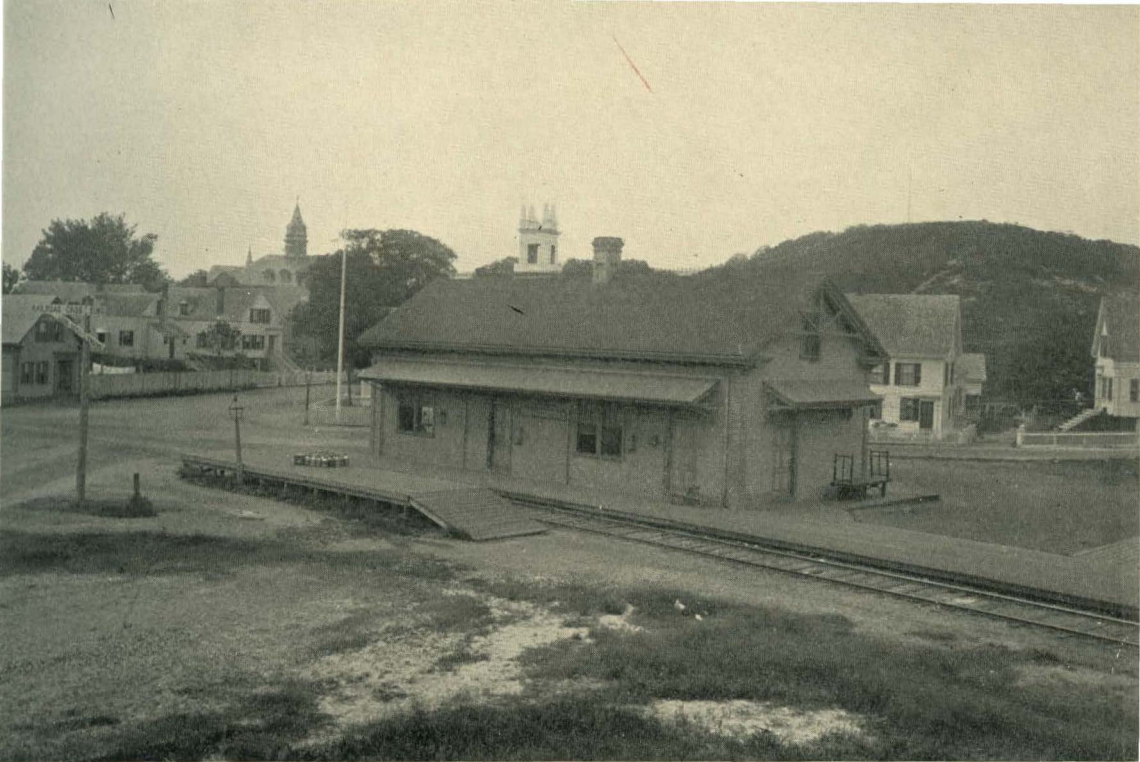
COMMERCIAL STREET.





COPYRIGHT, 1898, BY E. A. PERRY.

ATLANTIC HOUSE.



COPYRIGHT, 1898, BY E. A. PERRY.

RAILROAD STATION AND TOWN HILL.



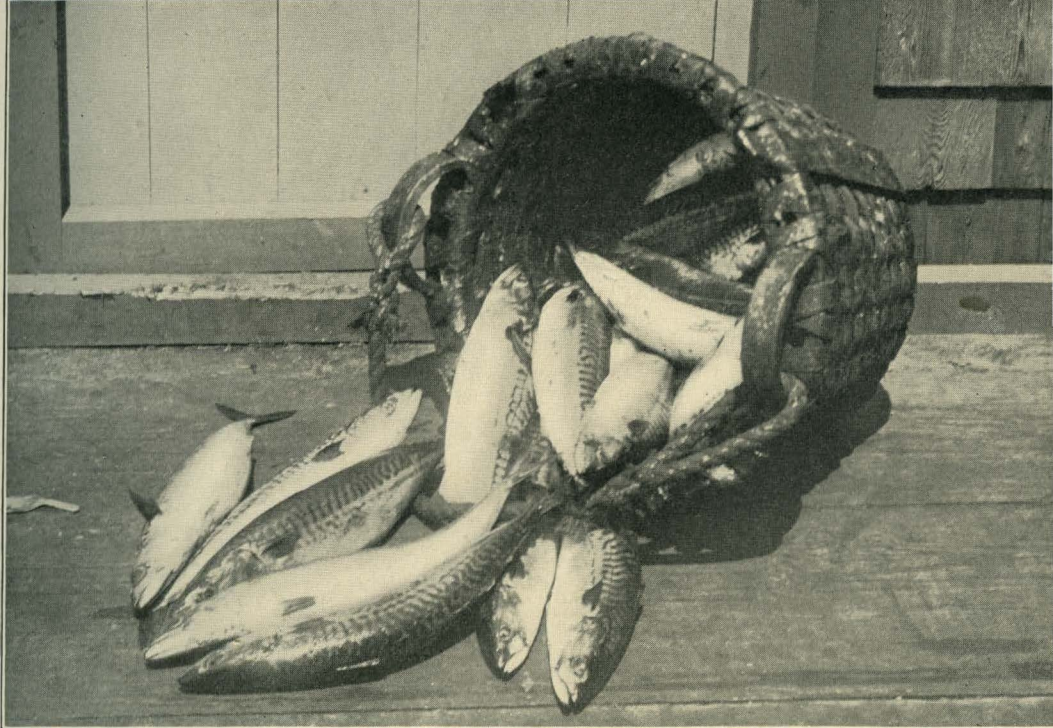
COPYRIGHT, 1998, BY E. A. PERRY.

TOWN CRIER.



COPYRIGHT, 1898. BY E. A. PERRY.

GIFFORD HOUSE.



COPYRIGHT, 1899, BY E. A. PERRY.

A CATCH OF MACKEREL.



PILGRIM HOUSE.

PILGRIM HOUSE.





COPYRIGHT, 1898, BY E. A. PERRY.

CONGREGATIONAL CHURCH AND TOWN HALL.



ALONG SHORE.



COPYRIGHT, 1898, BY E. A. PERRY.

MAYO COTTAGE.



HARBOR AND TOWN, FROM EAST END.



COPYRIGHT, 1898, BY E. A. PERRY.

ATKINS COTTAGE.

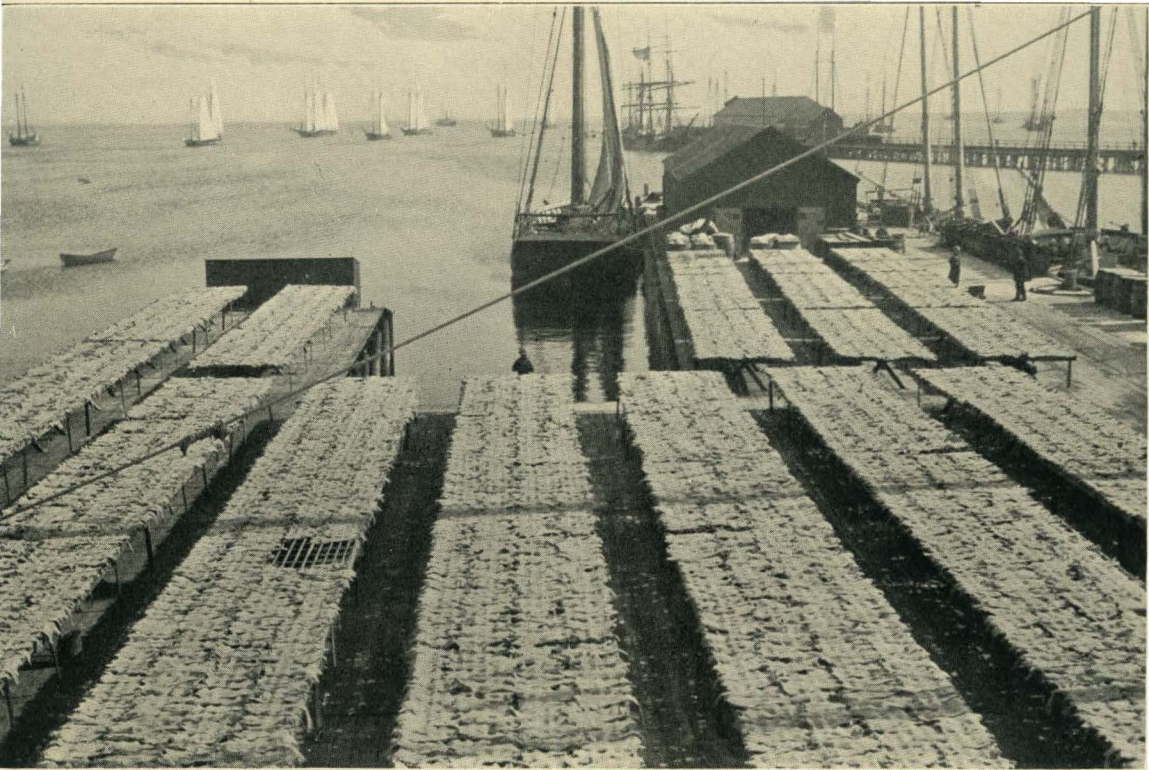


VIEW OF BEACH, FROM EAST END.



COPYRIGHT, 1898, BY E. A. PERRY.

FISH HOUSES, FISH FLAKES, AND WHARF.



COPYRIGHT, 1898, BY E. A. PERRY.

DRYING CODFISH.



COPYRIGHT, 1898, BY E. A. PERRY.

COTTAGES, EAST END.



COPYRIGHT, 1898, BY E. A. PERRY.

SAND DUNES.



COPYRIGHT, 1898, BY E. A. PERRY

PEAKED HILL BAR LIFE-SAVING STATION.



COPYRIGHT, 1898, BY E. A. PERRY.

AN OLD WRECK.



COPYRIGHT, 1898, BY E. A. PERRY.

USING THE BREECHES BUOY



HIGHLAND LIGHT AND THE CLIFFS.