



1959 Provincetown

Provincetown 1958



WELLFLEET



TO PROVINCETOWN

12 M —————>

TO PLYMOUTH

<————— 65 M

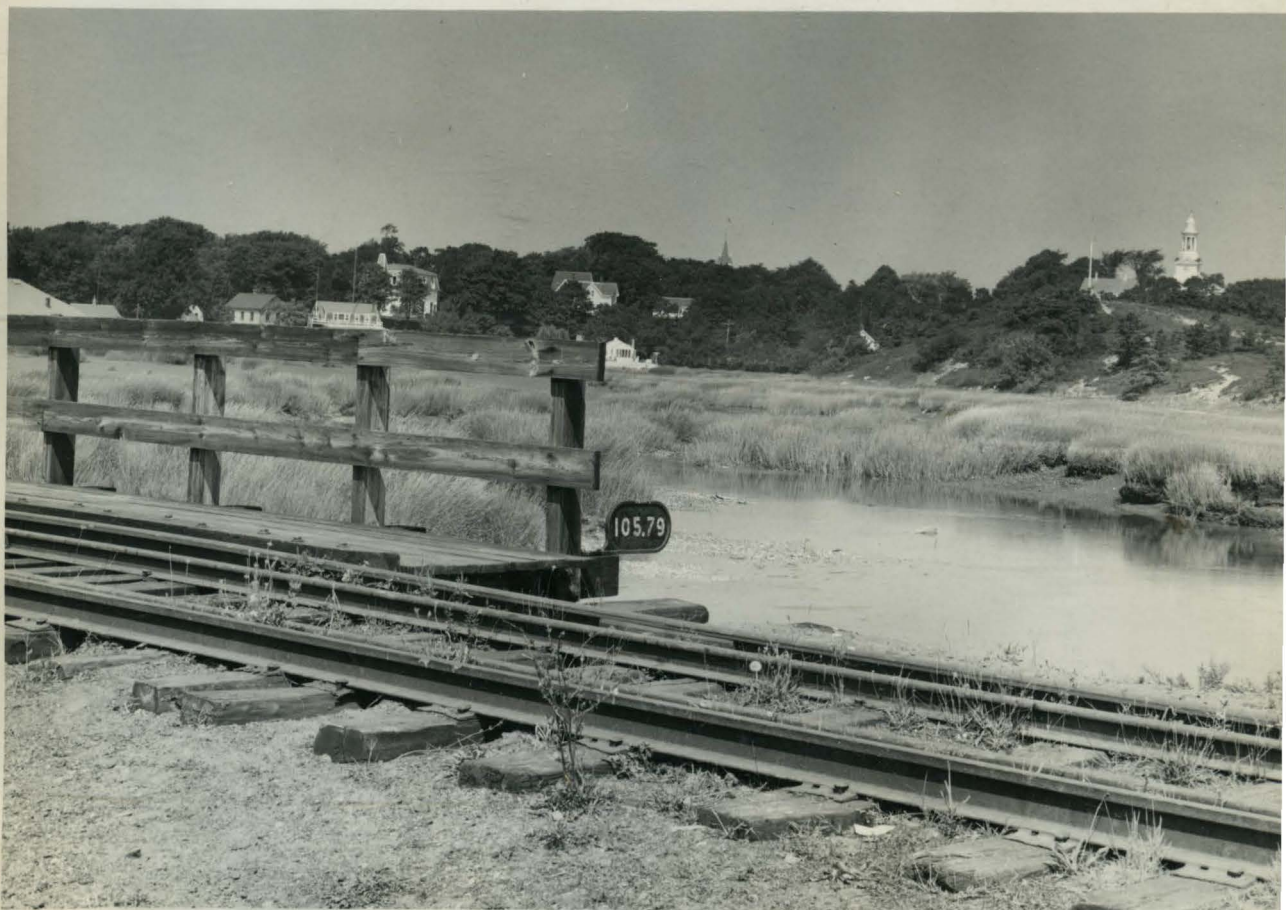
1959



Provincetown, Cape Cod, Mass. from the top of the Monument 195



Antiques on Cape Cod, July 1958.



Cape Cod, Wellfleet. Oyster Shack. Railroad now being dismantled. 1960