



Lands Ind Inn @ 1972



Lands End Inn fireplace mantle



"The Castle" in background before burning in early 1950's



Interior - Lands End Inn

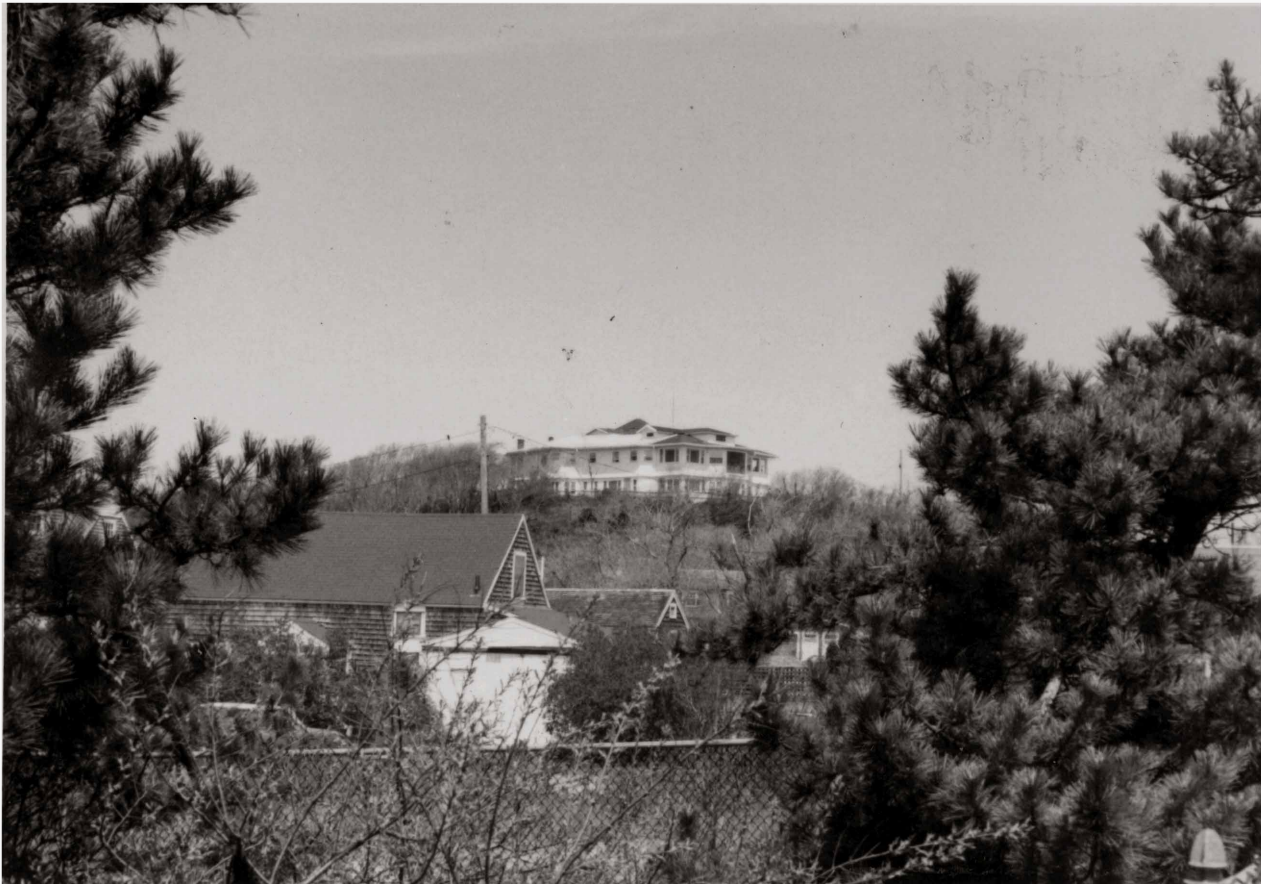




View from Land End Inn before waterside houses were built.



Lands End Inn from Point Street - the "Castle" in the distant right



Lands End Inn @ 1960's from Pilgrim Landing Park



Lands End Inn - 1972 - right after David Schoolman purchased it



Lands End Inn garden





Interior shot - Lands End Inn



Breakfast Porch - Lands End Inn







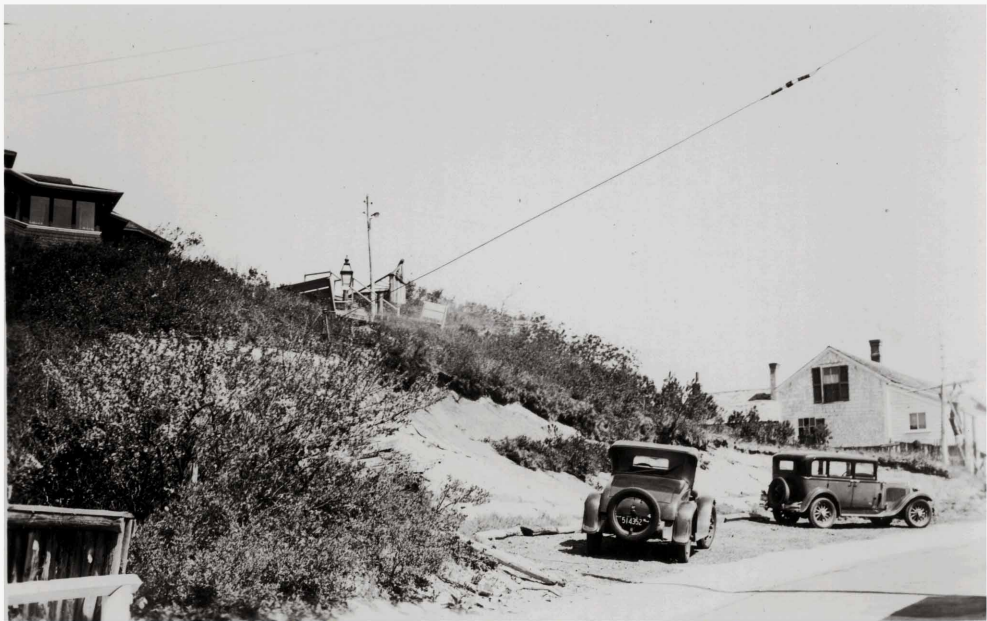
Fireplace Lands End Inn



Lands End Inn from Point Street - the "Castle" in distant right

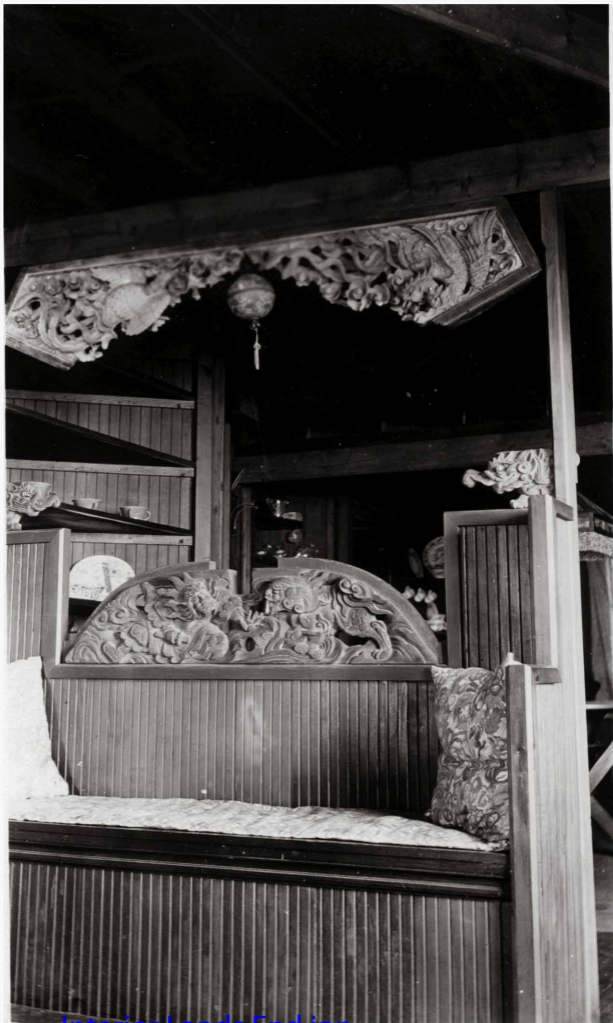


Lands End Inn from the "Castle" part of which is on the left



Street view looking at Lands End Inn up on left





Interior Lands End inn

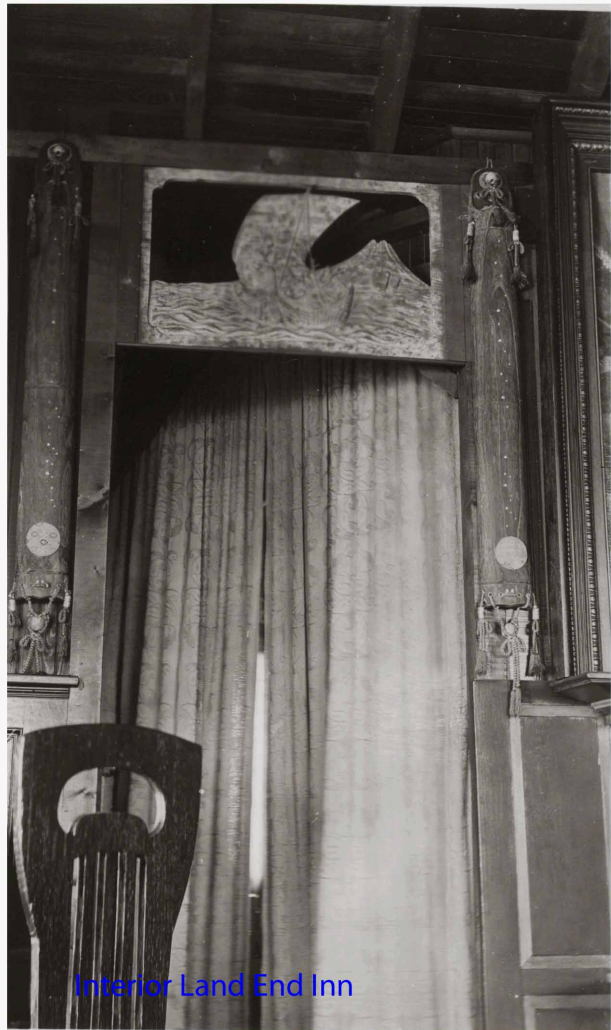




Interior Lands End Inn



Interior Lands End Inn



Interior Land End Inn



Interior Lands End Inn

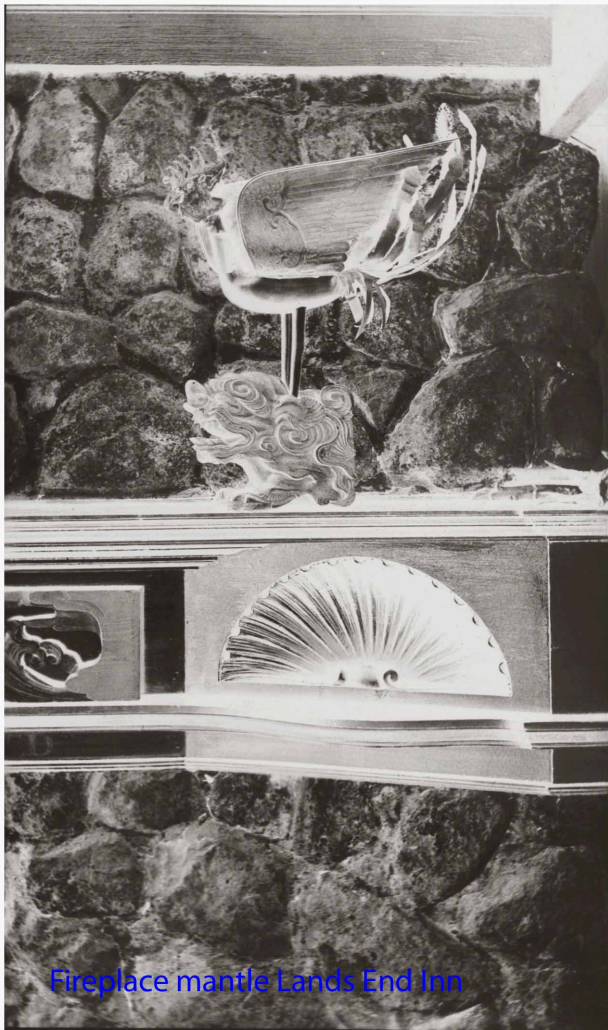


Interior Land End Inn



Fireplace Mantle Lands End Inn





Fireplace mantle Lands End Inn





Living Room Lands End Inn



Living Room Lands End Inn



Whale bones Lands End Inn garden



Living Room Lands End Inn @1960's



Lands End Inn @ 1950's



Solarium view - Red Inn on right





Lands End Inn @ 1960's



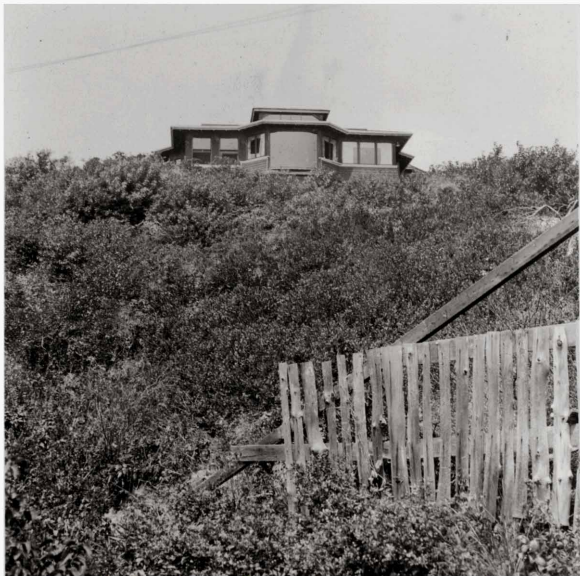




Living Room Lands End Inn



Fireplace Lands End Inn



Lands End Inn from Street @1920's

















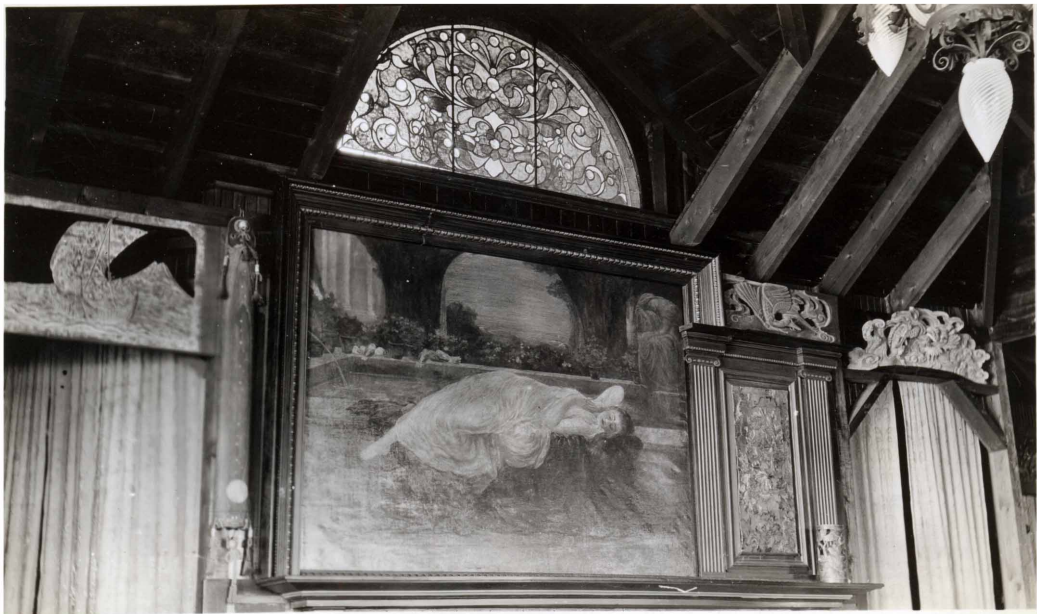




Charles Higgins Office now Moroccan Tower Lands End Inn













WHILE I WAS MUSING THE FIRE BURNED

**"WHILE I WAS MUSING THE FIRE BURNED"**



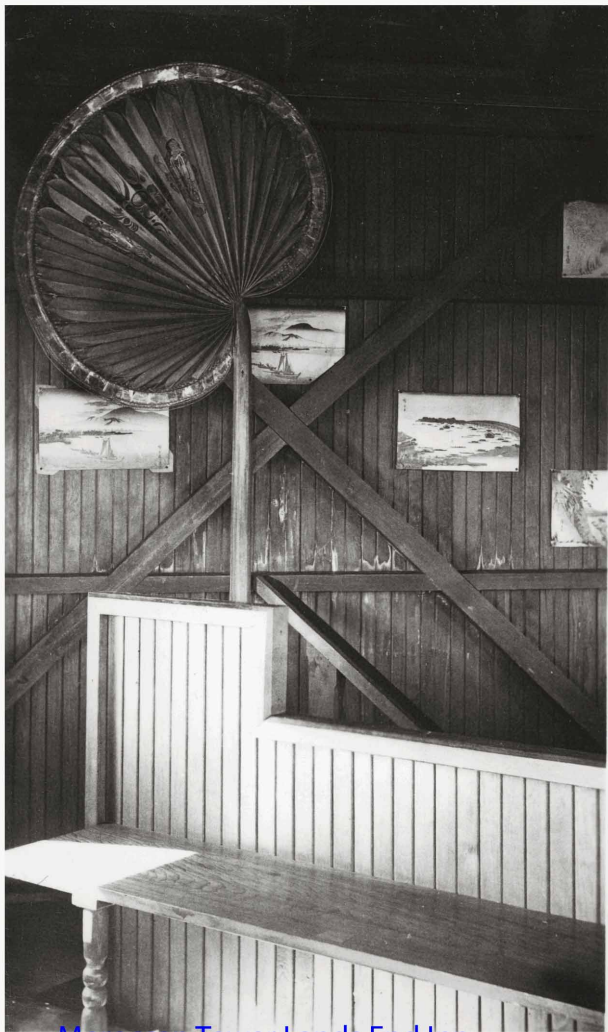
Breakfast Porch Lands End Inn











Moroccan Tower Lands End Inn



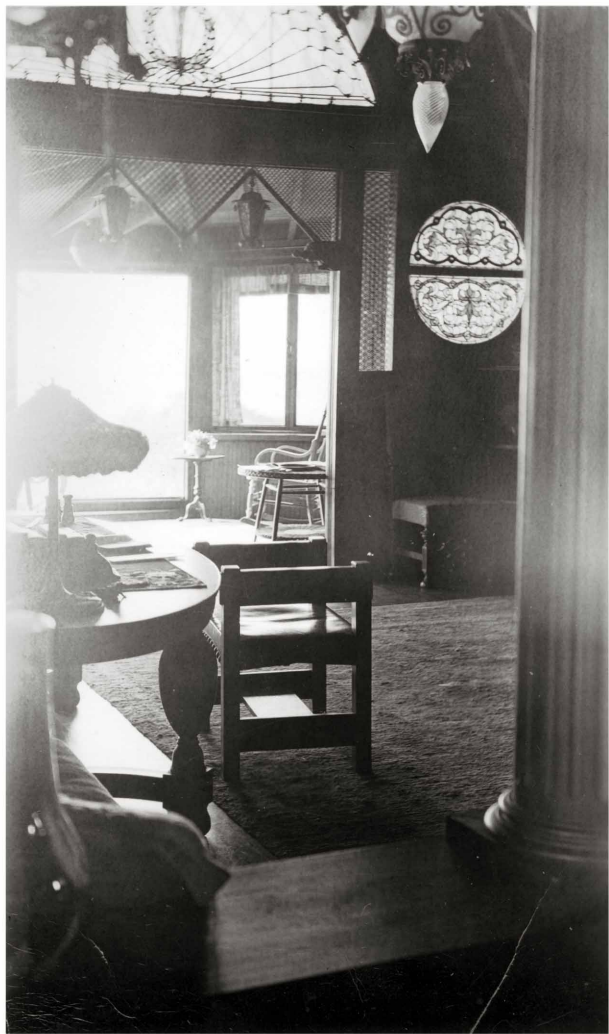




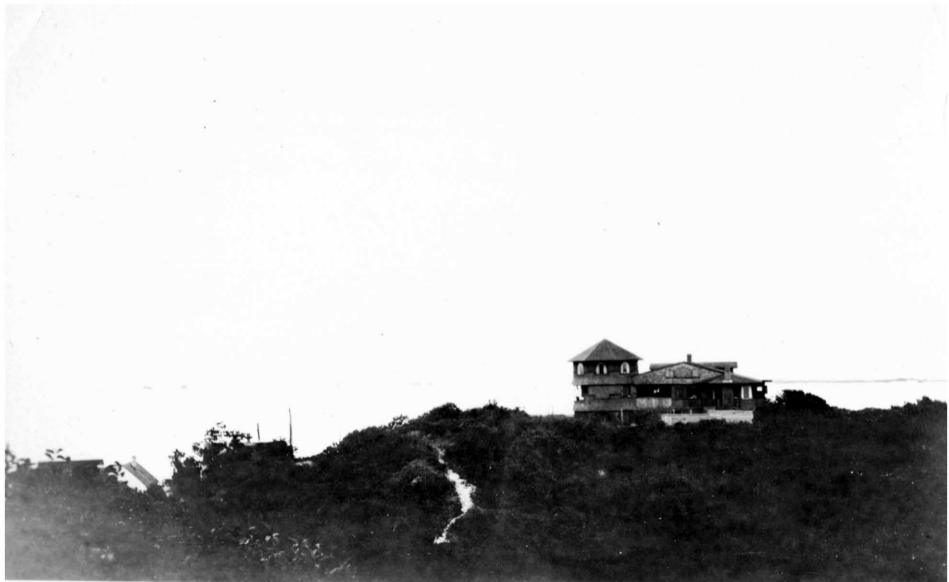
Guest Room Lans End Inn











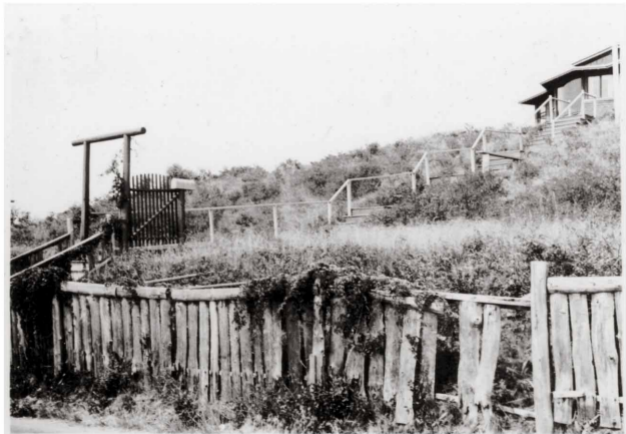
LANDS  
END  
INN  
Luncheon  
Tea  
Dinner  
Supper









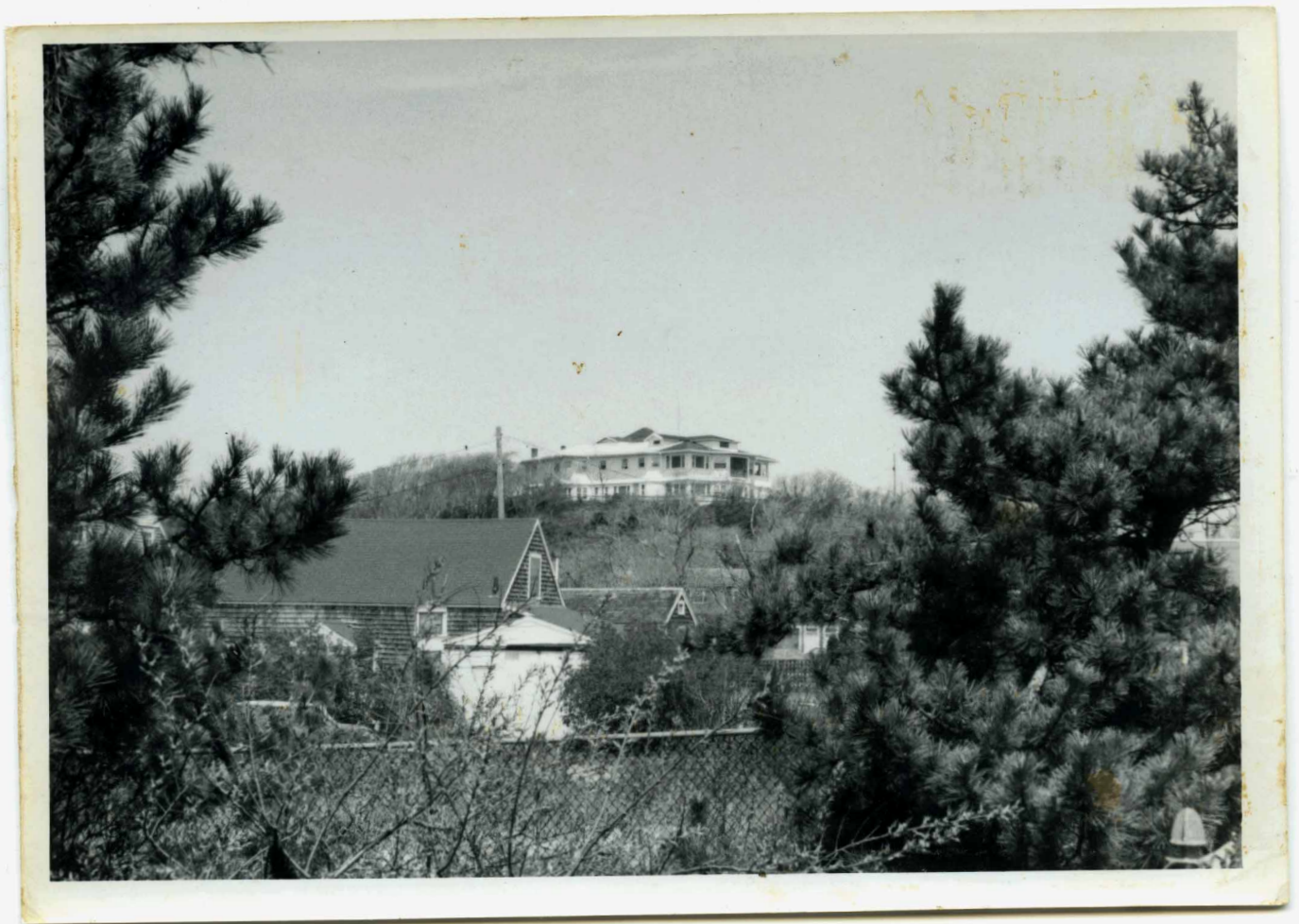








Land's End Inn ca. 1937









In 1926,  
these  
summer  
neighbors  
from  
Springfield  
bought  
the  
Land's  
End  
Inn

Appears to be the house just east of the Red Inn



June 1947









BEPPIC (102127)

16442

FUJI







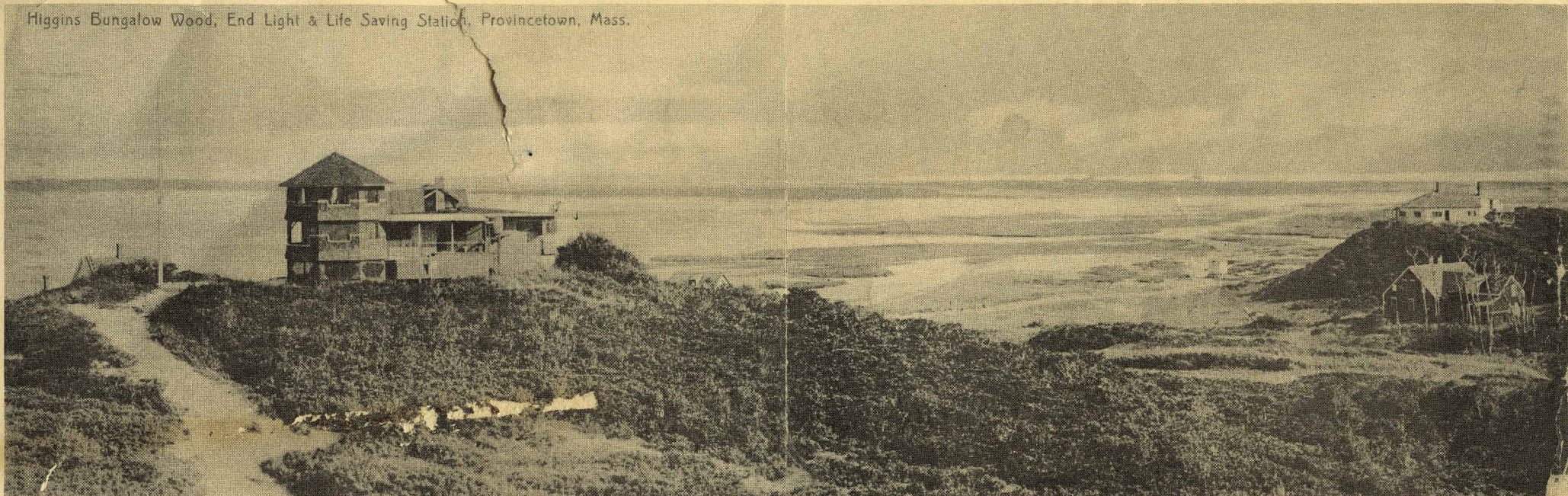




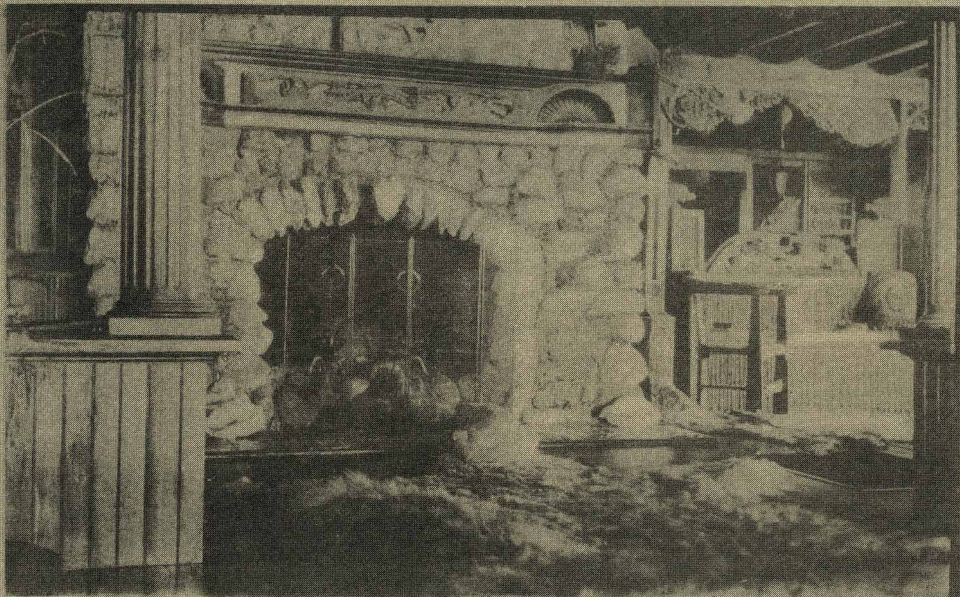
INTERIOR OF HIGGINS' BUNGLOW,  
PROVINCETOWN,  
MASS.



Higgins Bungalow Wood, End Light & Life Saving Station, Provincetown, Mass.







FIREPLACE, LANDS END INN, PROVINCETOWN, CAPE COD, MASSACHUSETTS