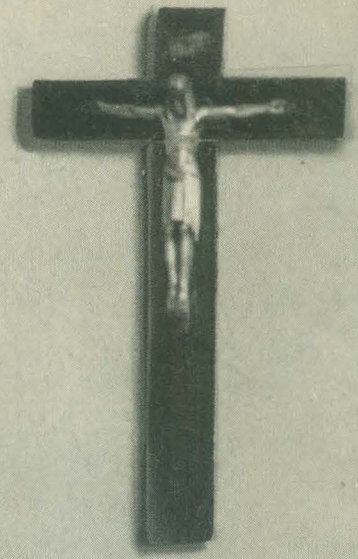


# LIFE



"PRAISE THE LORD AND  
PASS THE AMMUNITION"

NOVEMBER 2, 1942 **10** CENTS  
YEARLY SUBSCRIPTION \$4.50  
OVER 4,000,000 CIRCULATION

# MADE-OVER JUNK

Provincetown artist shows how to transform dark ugly furniture into gay modern pieces

**M**aking something out of nothing is one of the great minor satisfactions. A genius at this sort of magic is Peter Hunt, lanky, olive-skinned scenic artist who, in the affluent 1920's, traded in antiques but for the past ten years has been prospering on made-over junk. Mr. Hunt has a house and workshop at Provincetown, Mass. With the help of four apprentices he transforms a mess of items, such as those shown below, into gay, useful pieces of furniture. Anyone can do as much, says Mr. Hunt. Here are some tricks for those who wish to try.

Beginners should start with furniture which is in good condition but has been discarded because it is scratched, stained or plain ugly. If lines are unpleasant, cutting down the legs, sawing bits off tops or chiseling off gingerbread will help. Sandpaper wooden surfaces thoroughly. Paint with two coats of flat oil paint, preferably white or light pastel. For decoration ideas, turn to old china, seed catalogs, fans, old wallpaper, valentines and books on peasant design. Try drawing the design on paper first, then draw with soft pencil on furniture. For painting design, use tubes of oil paint. Squeeze a pinch of paint onto a palette. First dip brush into a mixture of half turpentine, half varnish, then into paint. Try to fill in penciled design with single bold blobs. Many small blobs of bright color are better than one large blob. For antique finish, first rub in raw umber then coat with clear varnish.



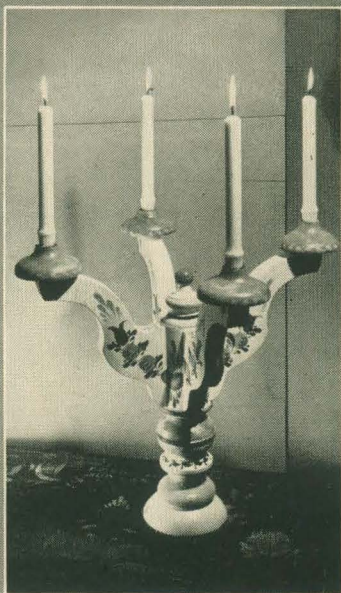
PETER HUNT DEMONSTRATES BORDER DESIGN OF PERIODS AND COMMAS, LARGE, SMALL, INVERTED



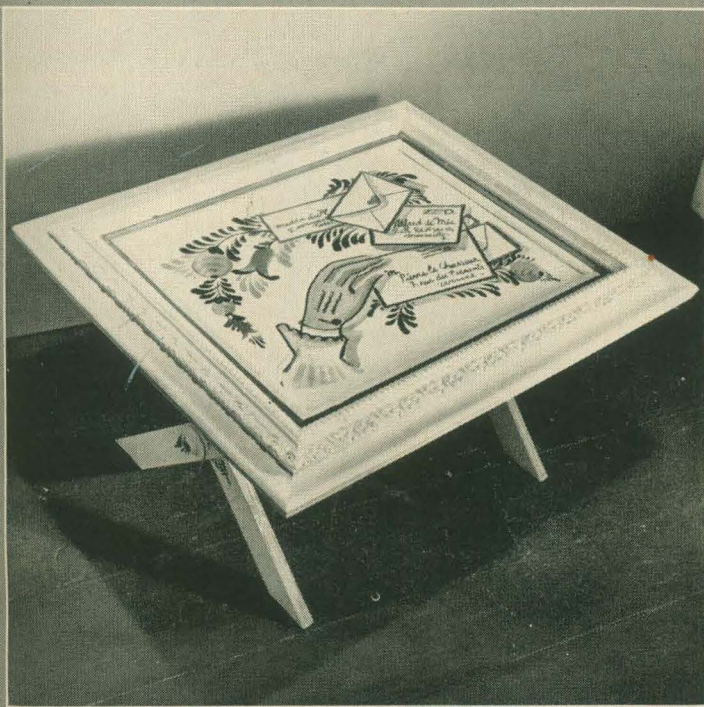
This truckload of junk, bought from the Salvation Army for \$120, was transformed by Artist Peter Hunt into more than a thousand dollars worth of attractive and practical furniture.

Second-hand dealers, storage warehouses or attics are excellent hunting grounds for horrid but sturdy pieces of furniture. With the aid of hammer, nails, saw, paint and imagina-

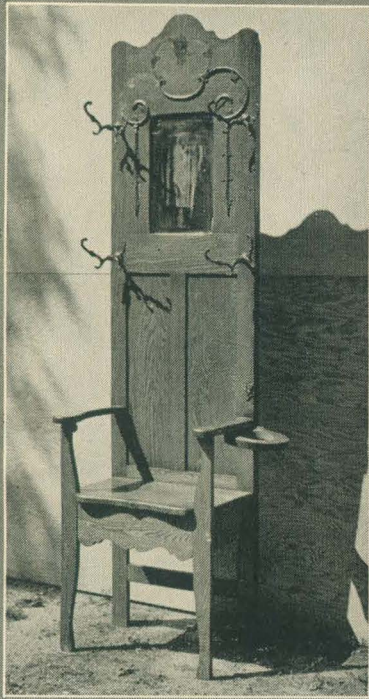
tion, these can be made into usable articles with a fresh, modern look. The average cost of second-hand chest is about \$5; chair \$2; picture frames 25¢ to 50¢; small tables \$1, large \$5.



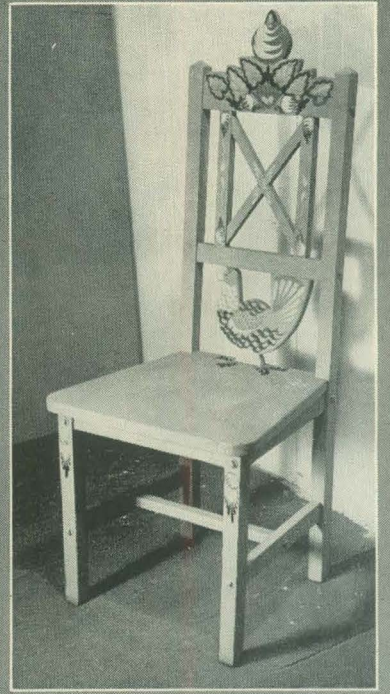
**Musty piano stool** becomes decorative candelabra by removing old upholstery, turning stool upside down, and adding base and four wooden discs pilfered from an old sideboard as candle holders. White paint and colorful hearts and flowers complete job.



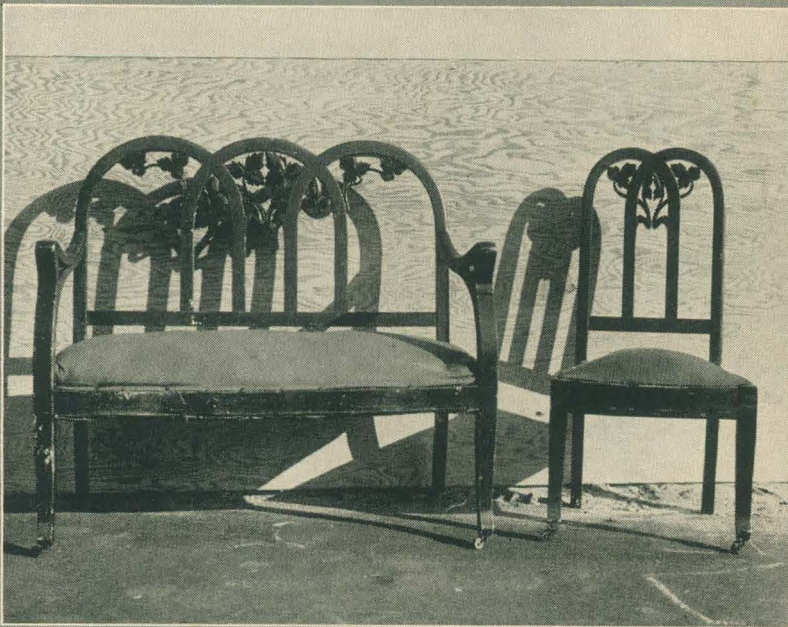
**Tarnished gilt frame** becomes a modern coffee table. Plywood, glued and nailed to frame, takes place of old painting. Sawbuck legs are added. Old, discarded sewing-machine legs could also be used. White paint and fanciful design add modern touch.



**Mission-style hat rack**, eyesore in any hall, becomes a bright peasant chair. The metamorphosis is achieved by sawing off the top, cutting an inch off back legs, painting.



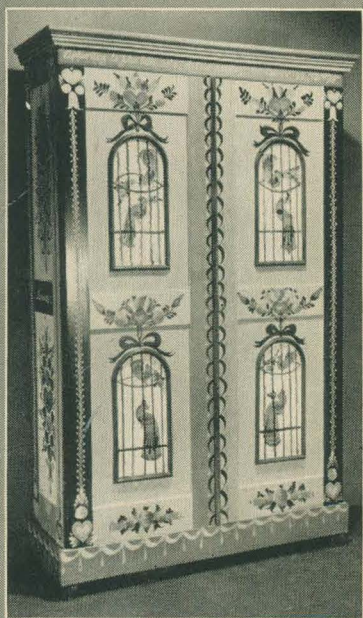
**Run-of-the-mill chair** becomes a decorator's item by painting it in a light color and adding simple carved piece at the top and child's toy rooster to the severe straight back.



**Drab settee and chair** with weary springs is transformed into garden furniture. The springs and upholstery are ripped out and new seats are made by nailing on ply-



wood. Set is painted first with waterproof enamel. Seats are painted to look like upholstery fabric. Arches are pink, white and blue. Note tassel effect painted along front.



**Dark wardrobe** was painted to make cheery piece at right. Arched carving on original inspired the bird-cage design. Adapting new design to old shape is good practice.



**Borax chest** acquires a distinctive look with fool-the-eye paintings. Top molding and legs have been taken off and wooden knobs substituted for outmoded fancy metal ones.

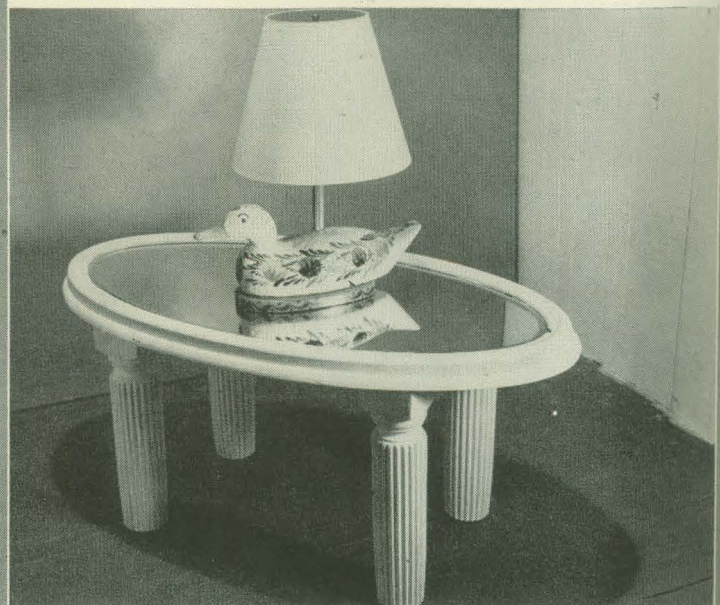
**Made-Over Junk** (continued)



**FROM THIS BURL-MAPLE DRESSER CAME TWO PIECES SHOWN BELOW**



**CHEST PART IS MODERNIZED WITH PAINT AND FOOL-THE-EYE DESIGN**



**MIRROR, PAINTED AND SET ON OLD TABLE LEGS, BECOMES TABLE**