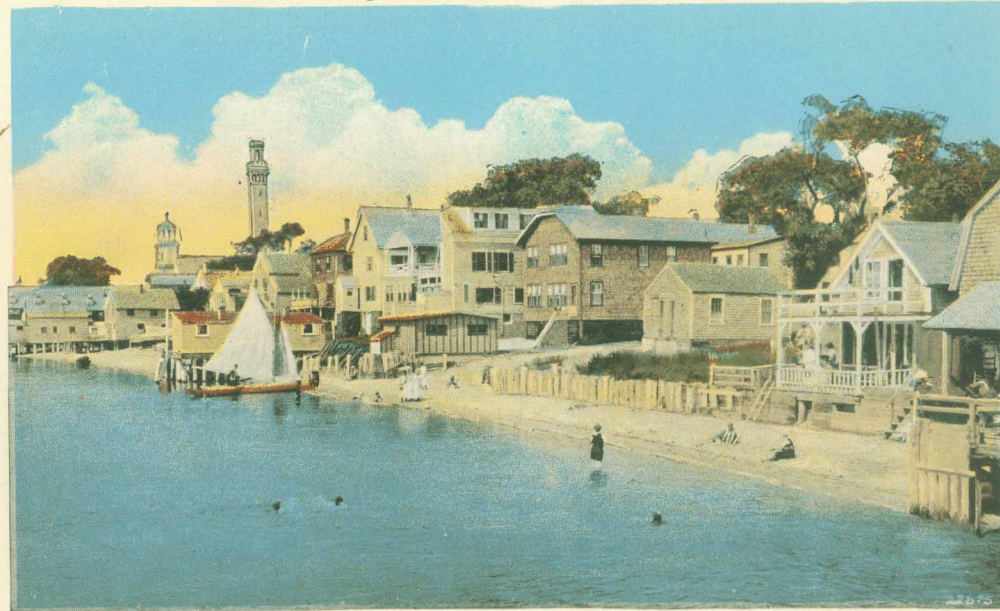


Children on the Beach, Provincetown, Mass.



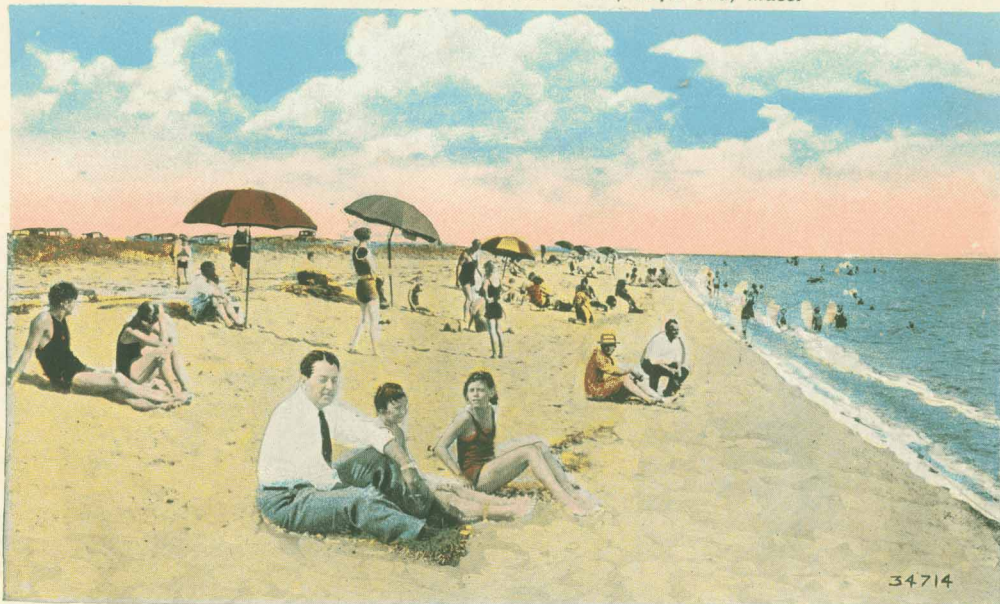
2160-5 (11)

Smith Bathing Beach, Provincetown, Mass.



22575

Provincetown Beach on the Dunes Road, Cape Cod, Mass.



34714



65 SCHOOL OF ARTISTS ON BEACH AT PROVINCETOWN, CAPE COD, MASS.

243-29





12106—Bird's eye  
View of  
Provincetown,  
Mass.

Printed in Germany.

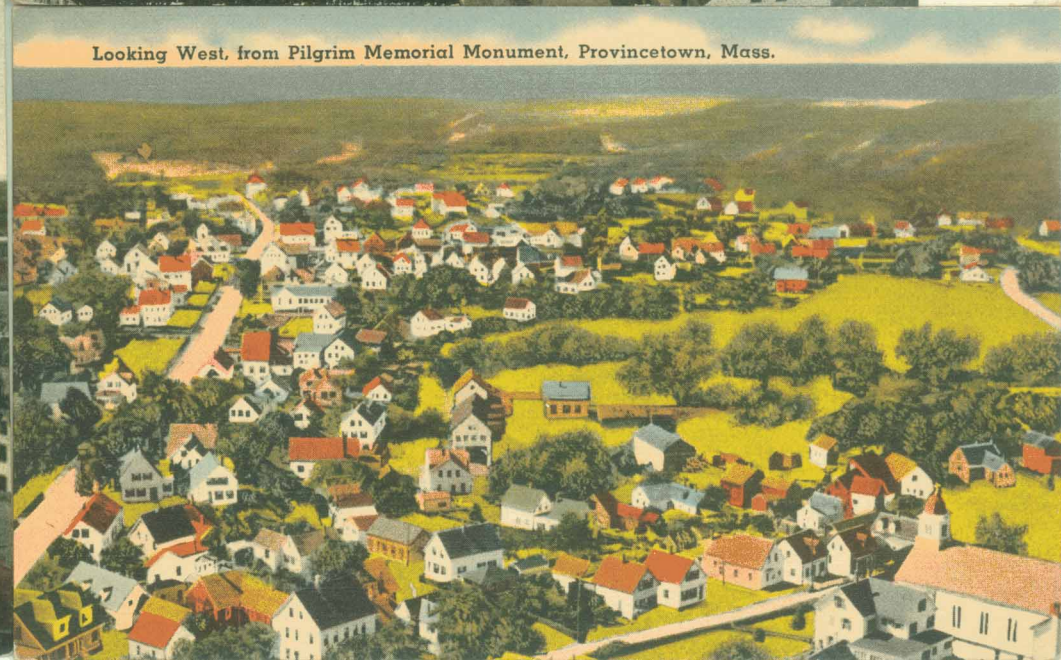


Provincetown, Mass., East End.

Aug. 13, 1906  
G. A.



12135 Provincetown from Centre Church



Looking West, from Pilgrim Memorial Monument, Provincetown, Mass.





18 THE HARBOR FROM TOWN HILL, PROVINCETOWN, CAPE COD, MASS.

95257



32347

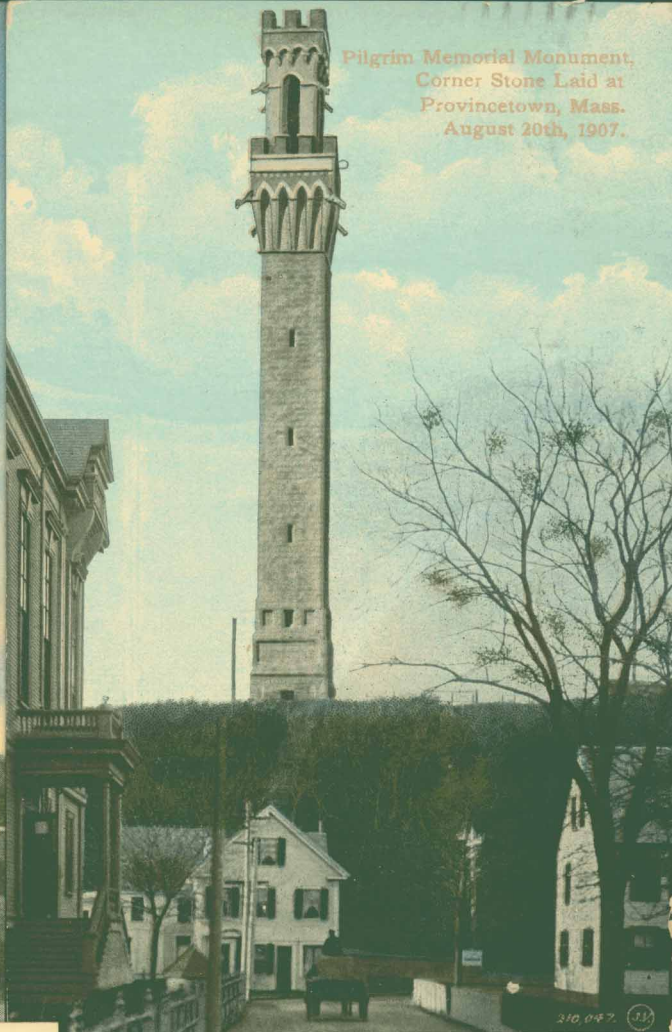


From the Pilgrim Memorial Monument

14 Bird's-Eye View from Pilgrim Memorial Monument, Provincetown, Cape Cod, Mass.



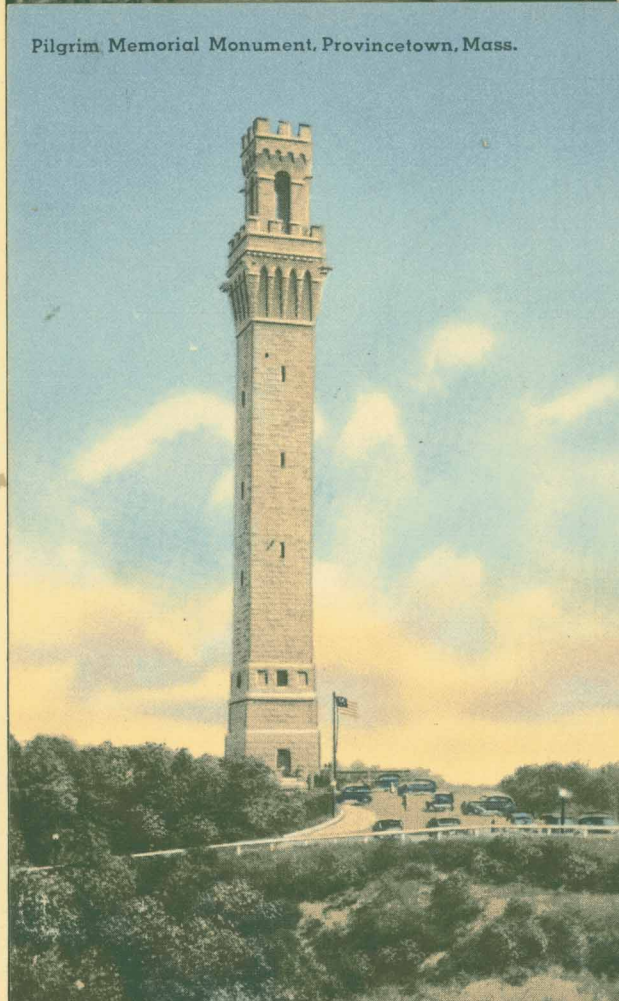
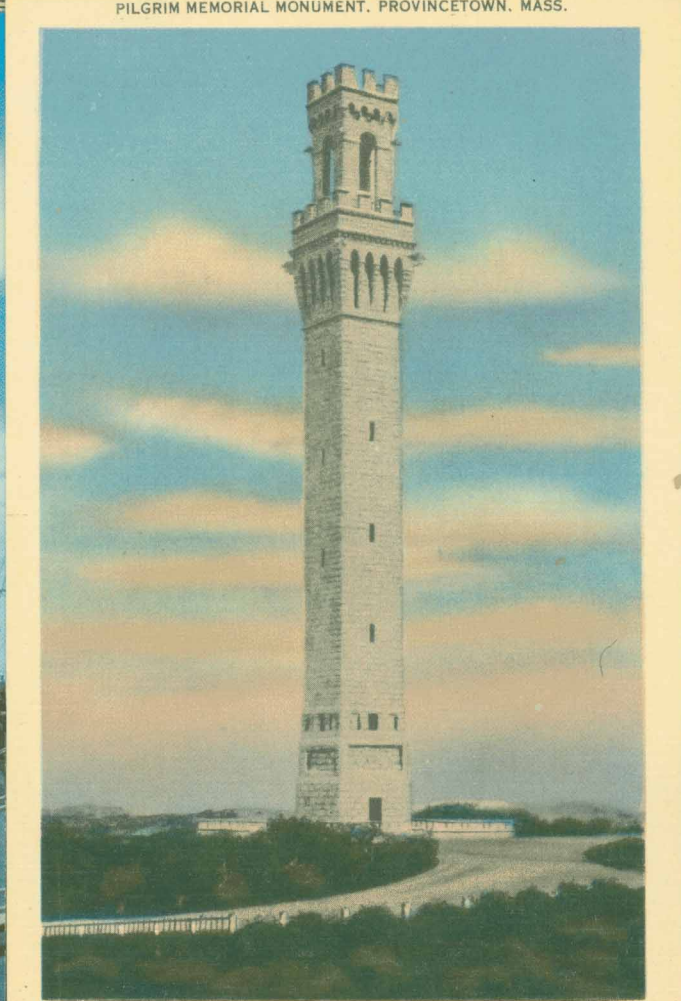




Pilgrim Memorial Monument At Night, Provincetown, Mass.

PILGRIM MEMORIAL MONUMENT. PROVINCETOWN, MASS.

Pilgrim Memorial Monument, Provincetown, Mass.



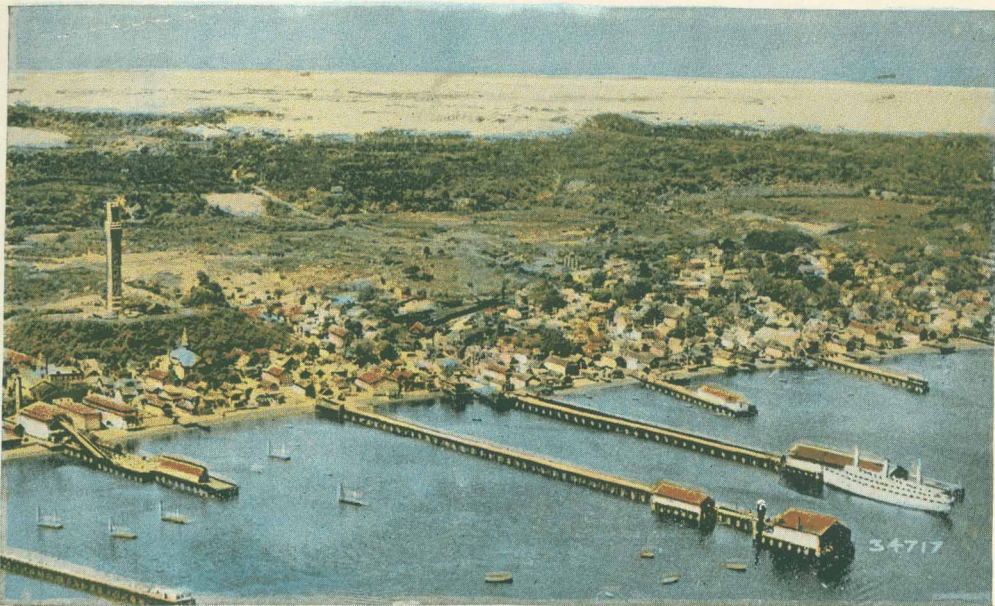
HEIGHT 252 FEET COST \$90,000.00. 42730



M 1410 - Water Front and Pilgrim Memorial Monument, Provincetown, Mass.



Provincetown from the Air.



48 THE WATER FRONT, PROVINCETOWN, CAPE COD, MASS.

5103-29



45 RAILROAD WHARF AND PILGRIM MEMORIAL MONUMENT, PROVINCETOWN, CAPE COD, MASS.



191 Waterfront, Provincetown, Cape Cod, Mass.

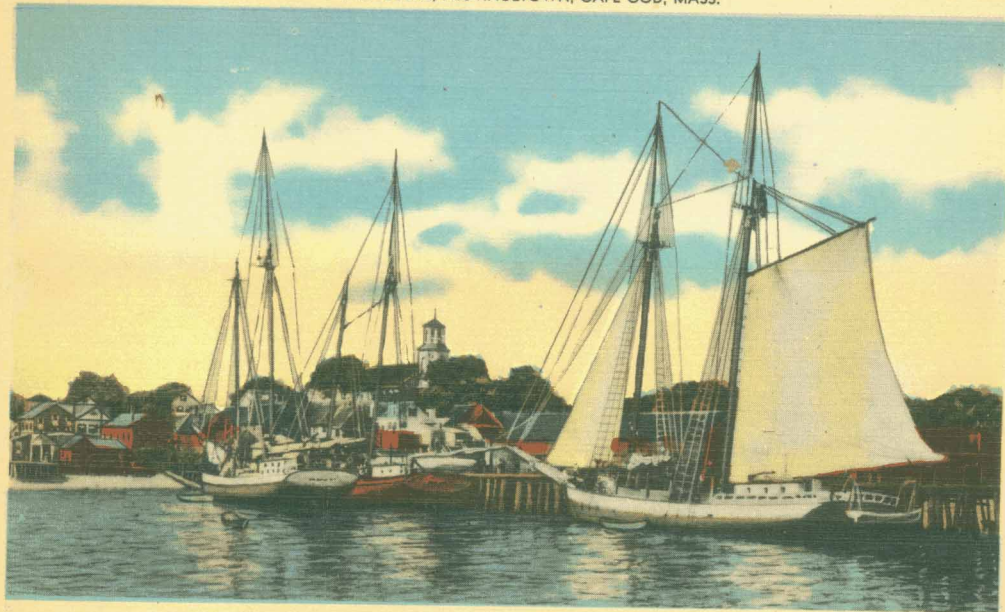


5B-H868





WHARF SCENE, PROVINCETOWN, CAPE COD, MASS.



49573

© 1911 - Drying Codfish,  
Provincetown, Mass.



DRYING FISHING NETS ALONG THE SHORE OF PROVINCETOWN, CAPE COD, MASS.

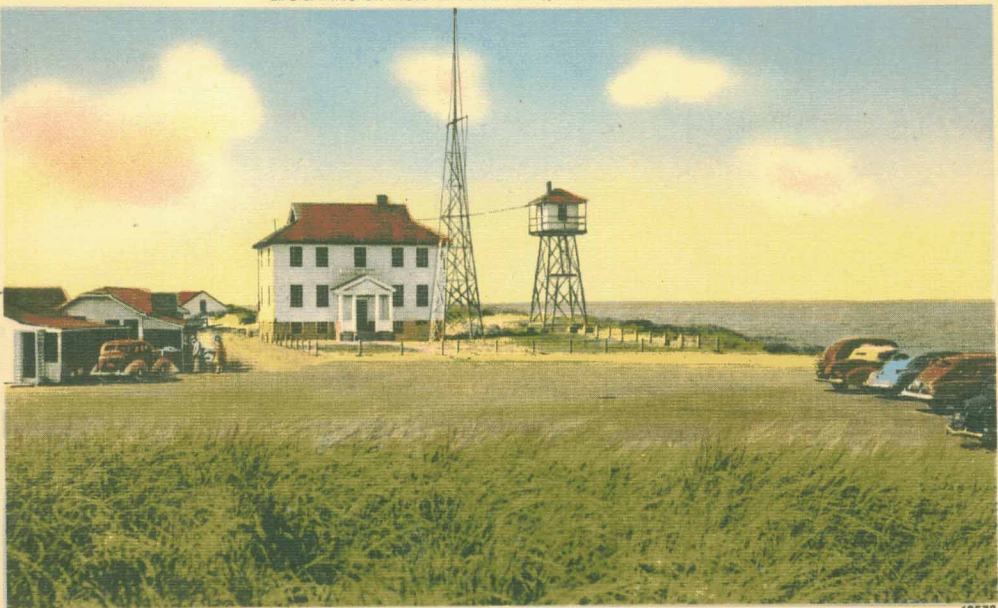


FISHING FLEET IN THE HARBOR, PROVINCETOWN, MASS.

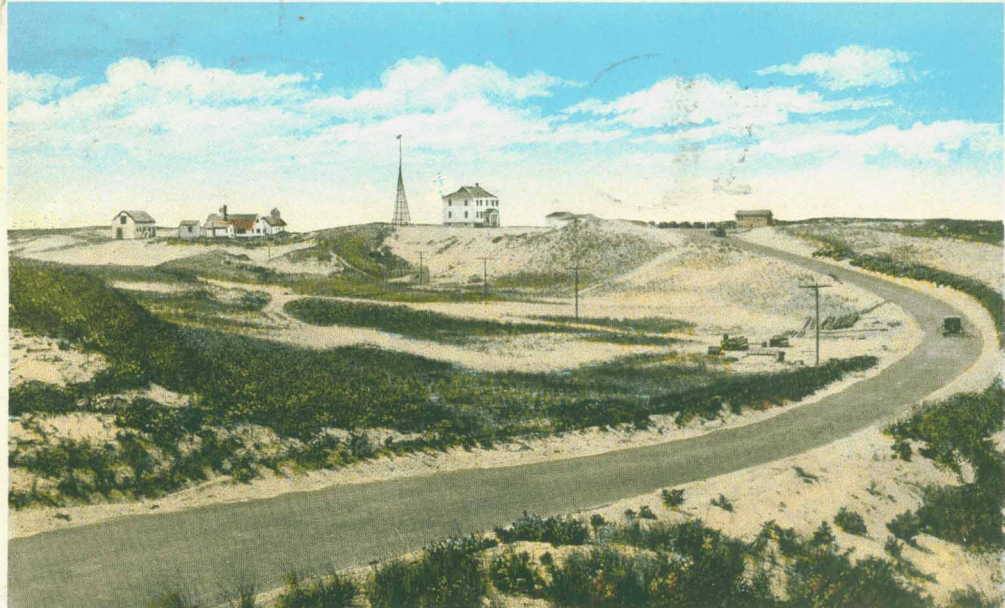




LIFE SAVING STATION AT RACE POINT, PROVINCETOWN, CAPE COD



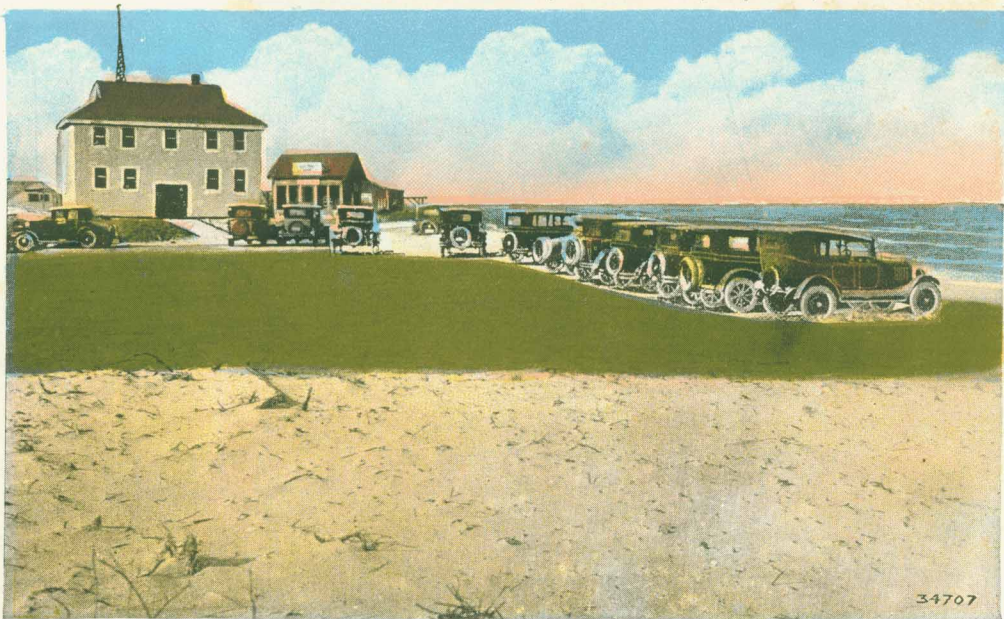
49572



1A35A0

THE NEW STATE HIGHWAY APPROACHING RACE POINT COAST GUARD STATION, PROVINCETOWN, CAPE COD, MASS.

Race Point Coast Guard Station, Provincetown, Cape Cod, Mass.



34707

New State Road through the Dunes at the Tip End of Cape Cod, Provincetown, Mass.



34726



178—"Way Up Along," West End, Provincetown, Cape Cod, Mass.



1B654-N

73:—The Oldest House, Provincetown, Mass.



32367

WAY UP ALONG WEST END, PROVINCETOWN, MASS.

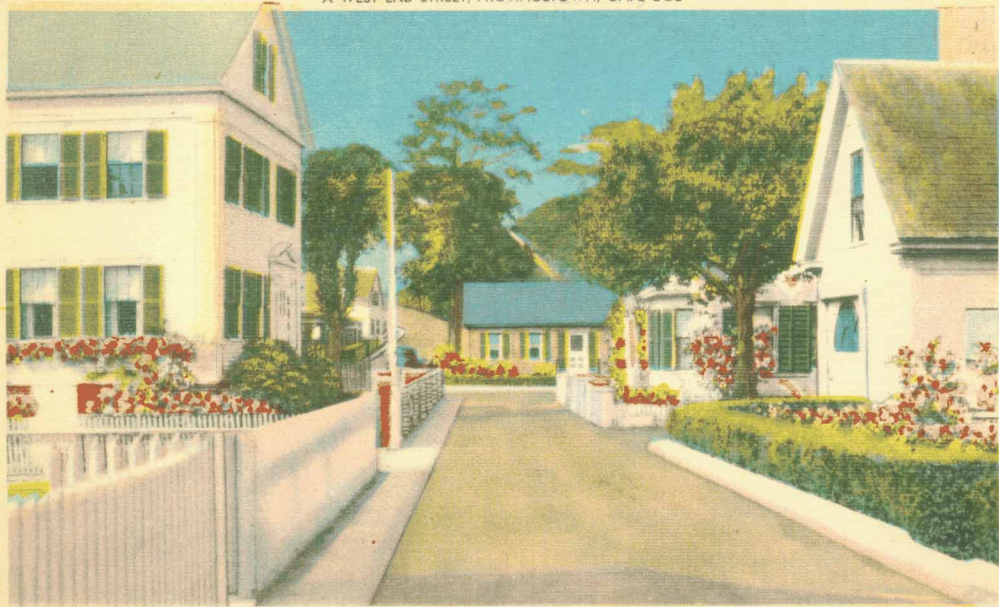


Commercial Street, Provincetown, Mass.

*It is fine here.*



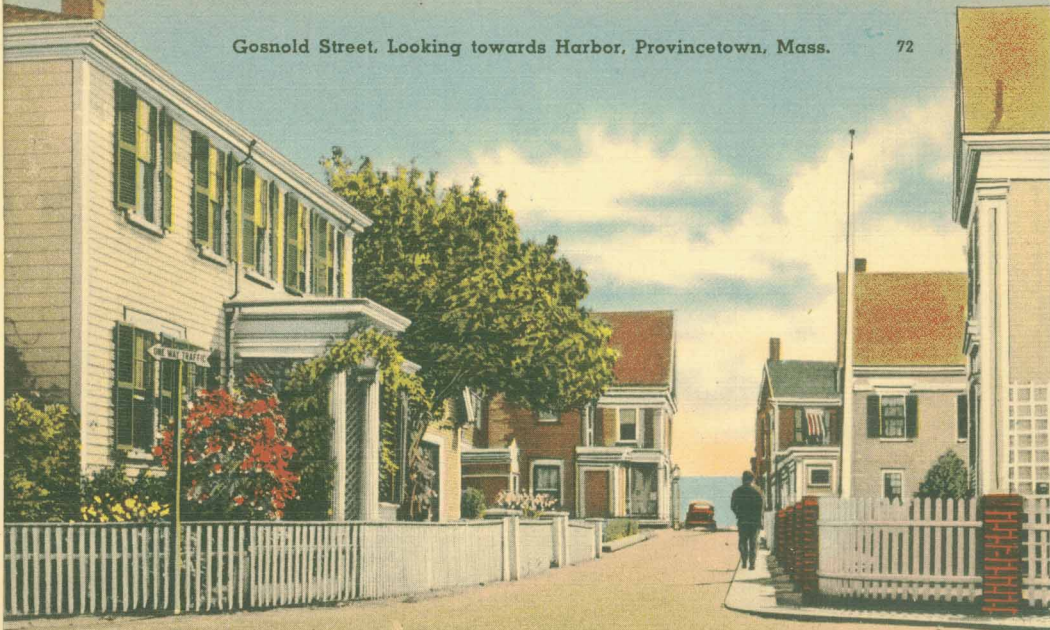
A WEST END STREET, PROVINCETOWN, CAPE COD



49568

Gosnold Street, Looking towards Harbor, Provincetown, Mass.

72



STREET SCENE. "WAY UP ALONG." PROVINCETOWN, CAPE COD, MASS.

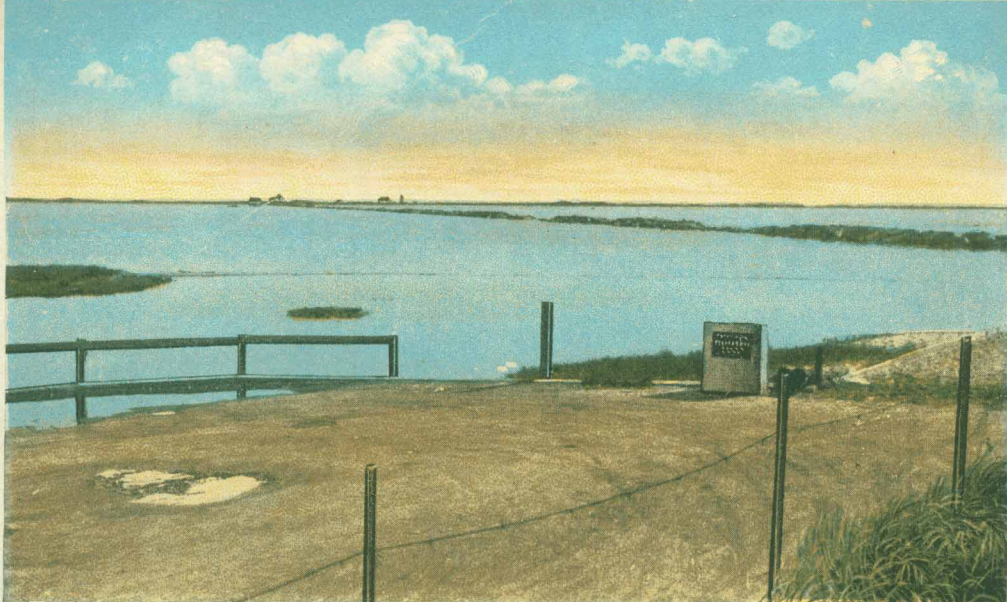


BRADFORD STREET, "THE BACK STREET," LOOKING EAST, PROVINCETOWN, MASS.

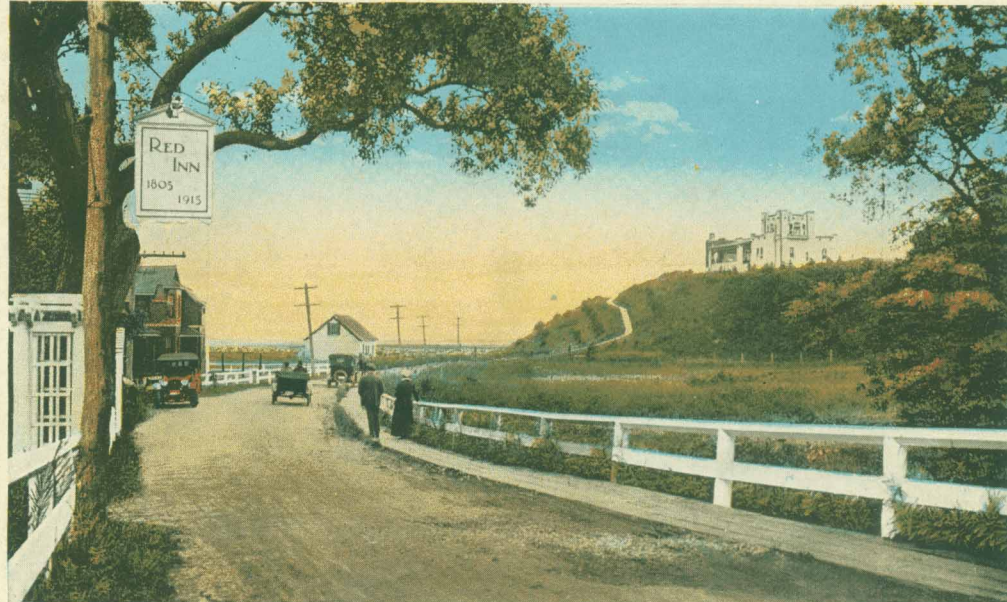




END OF STATE HIGHWAY, PROVINCETOWN, MASS. THE FIRST LANDING PLACE OF THE PILGRIMS, NOV. 11, 1620, O. S.



THE MAP IN MOURT'S RELATION SHOWS THAT NEAR THIS SPOT THE PILGRIMS FIRST TOUCHED FOOT ON AMERICAN SOIL.



"WAY UP ALONG," PROVINCETOWN, MASS.



46 THE BEACH AT THE WEST END, PROVINCETOWN, CAPE COD, MASS.

5104-28

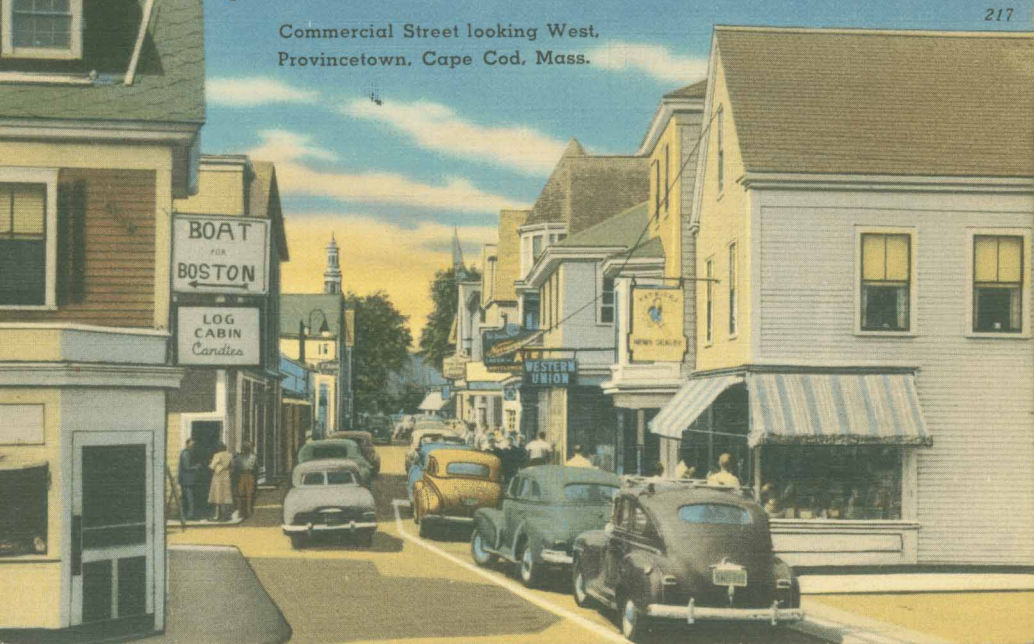


ANCHOR AND ARK CLUB, PROVINCETOWN, MASS.

107994



Commercial Street looking West,  
Provincetown, Cape Cod, Mass.



Scene at Steamboat Wharf,  
Provincetown, Mass.



NEW CENTRAL HOUSE, PROVINCETOWN, MASS.





A 6824 Pilgrim House, Provincetown, Mass.



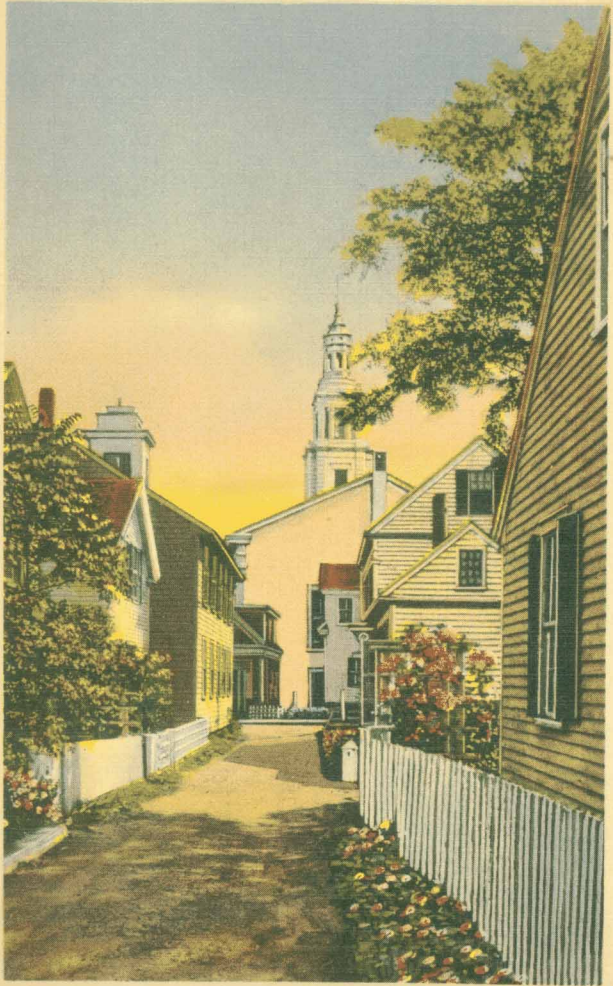
Mayo Cottage,  
Provincetown, Mass.



The "Town Home"  
"The Home", Provincetown, Mass.





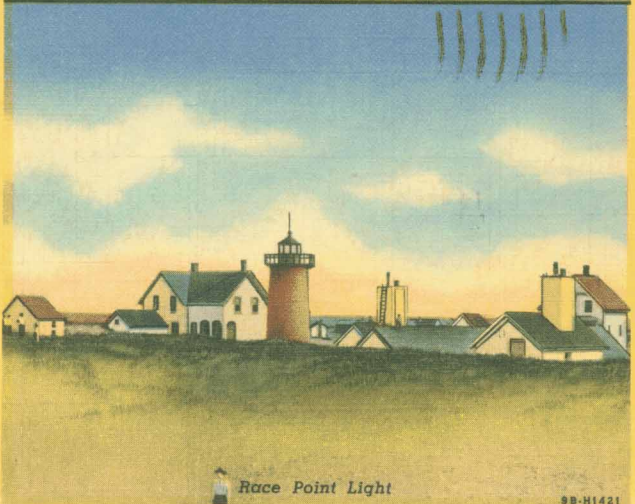


UNIVERSALIST CHURCH TOWER, DESIGNED BY CHRISTOPHER WREN.

198—Lighthouses at Provincetown, Cape Cod, Mass.

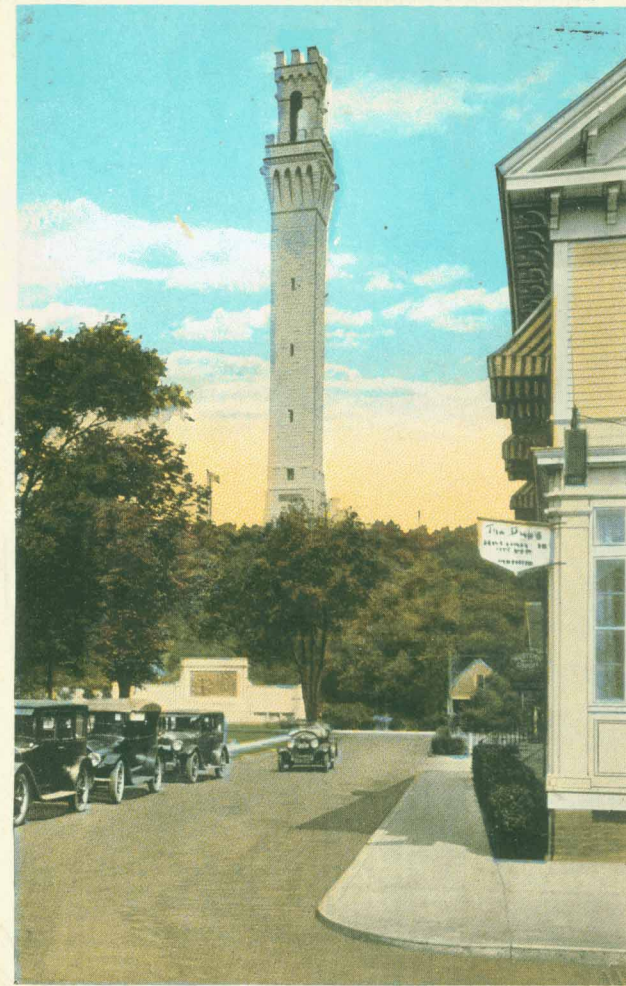


Wood End Light



Race Point Light

9B-H1421

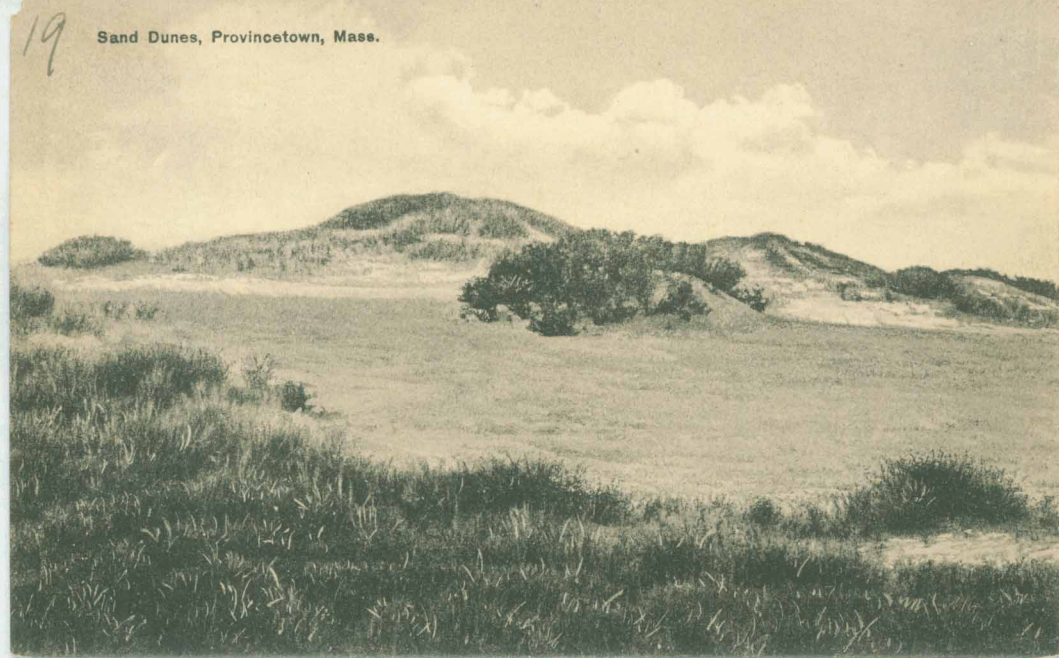


AND BAS-RELIEF TABLET, PROVINCETOWN, MASS.

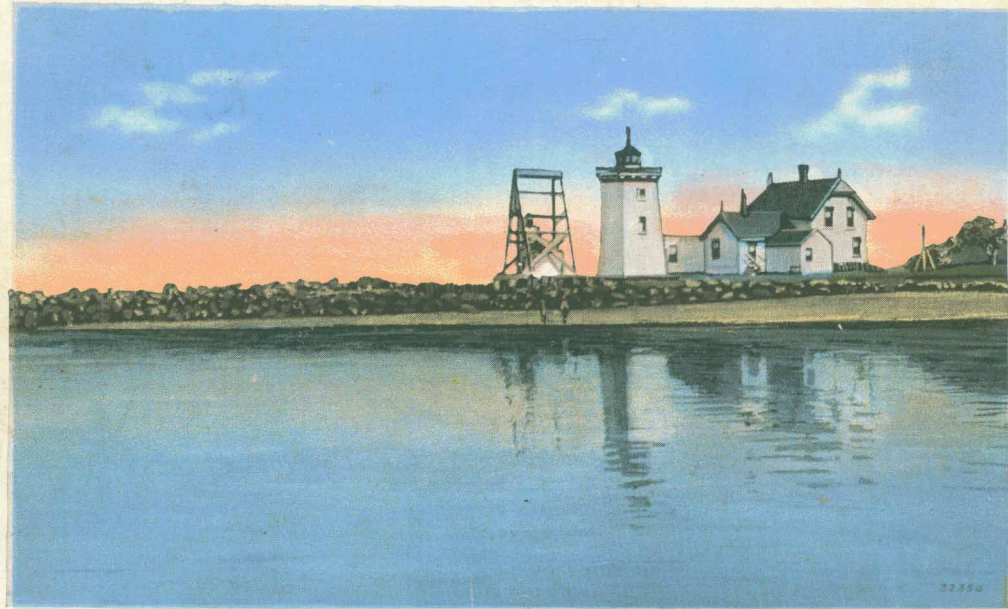
108009



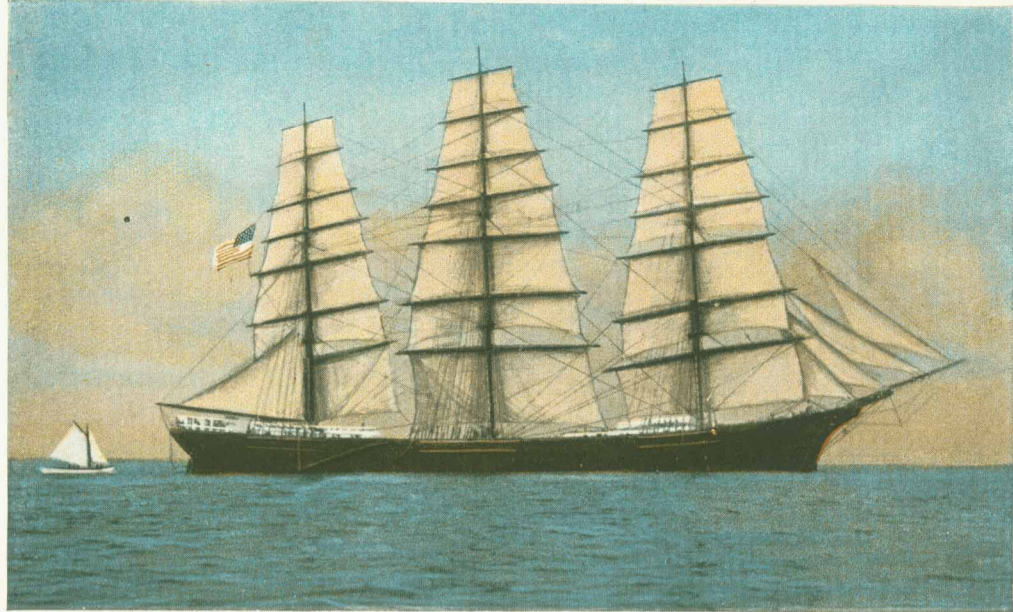
19 Sand Dunes, Provincetown, Mass.



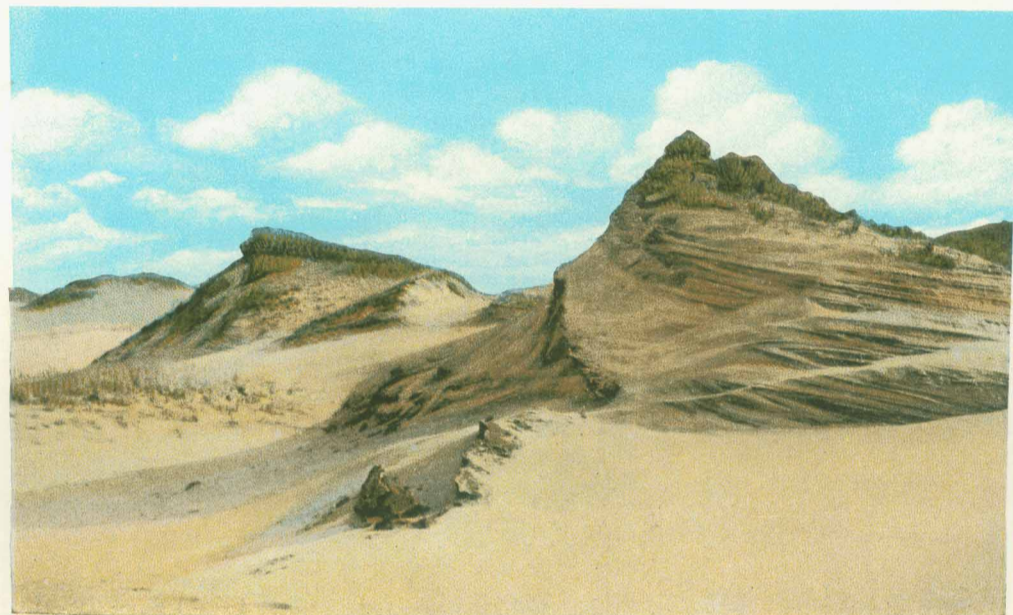
Long Point Light, Tip End of Cape Cod, Provincetown, Mass.







SHIP A. G. ROPES LEAVING PROVINCETOWN HARBOR



CAPE COD SAND DUNES

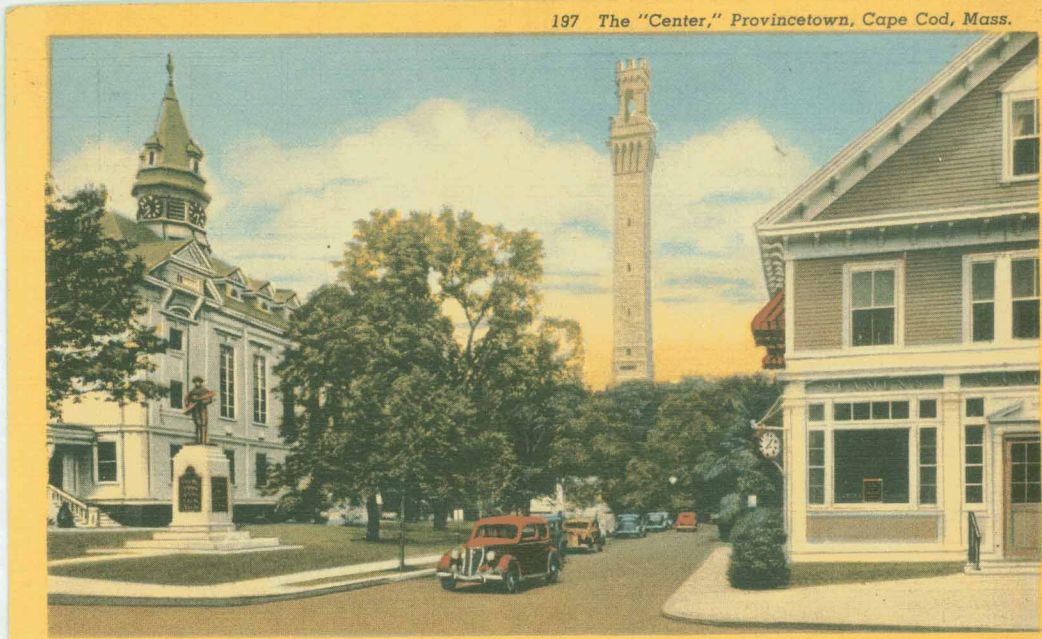


THE FIRST LANDING PLACE OF THE PILGRIMS, NOV. 11TH, 1620 O. S.



"OFF DUTY" FISHING BOATS





197 The "Center," Provincetown, Cape Cod, Mass.