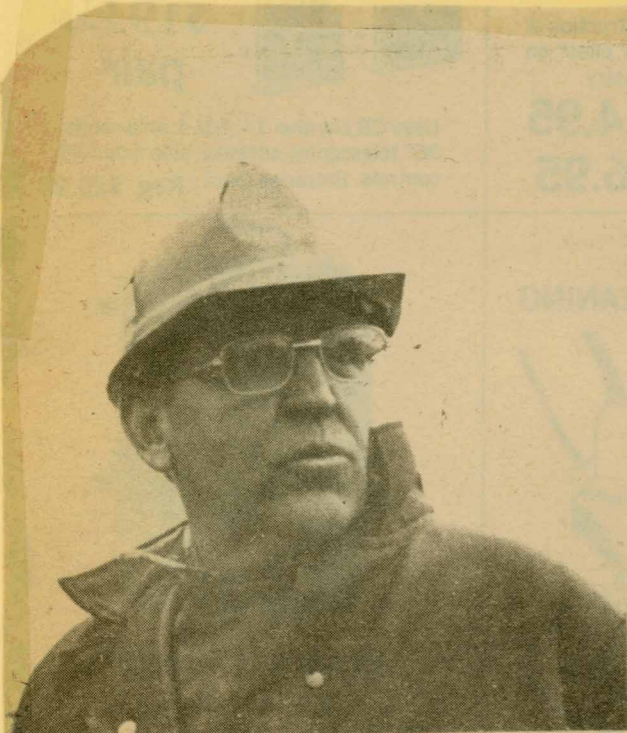
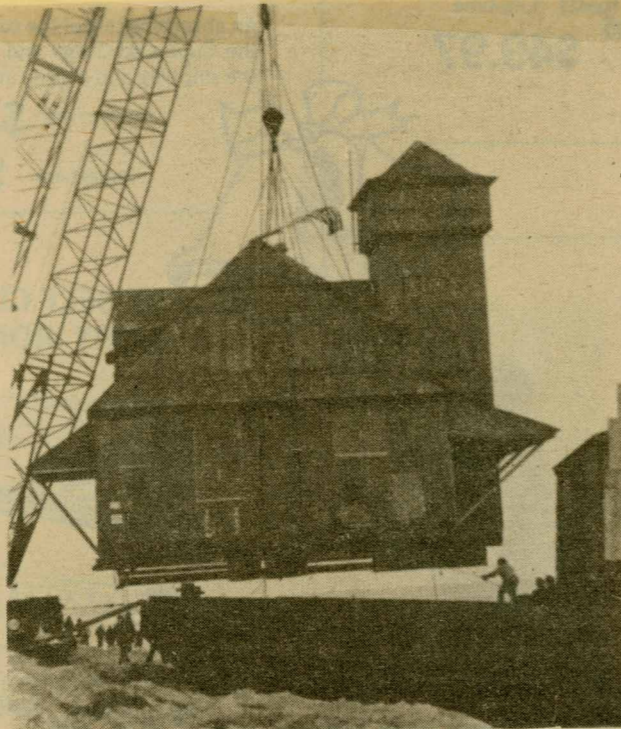


MOVING DAY AT NORTH BEACH (CHATHAM) Continued



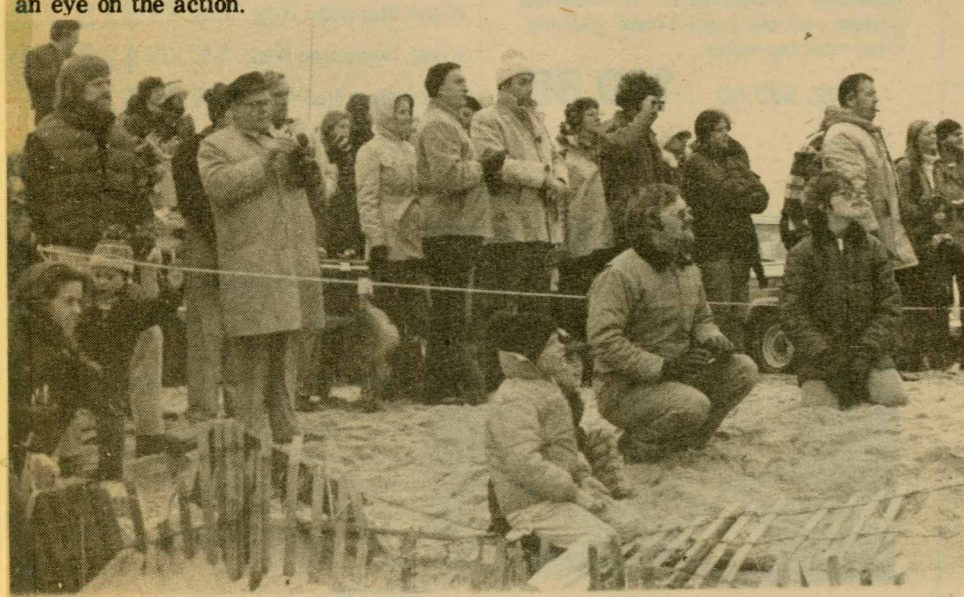
Jack Corey, whose company did the moving job, keeps an eye on the action.



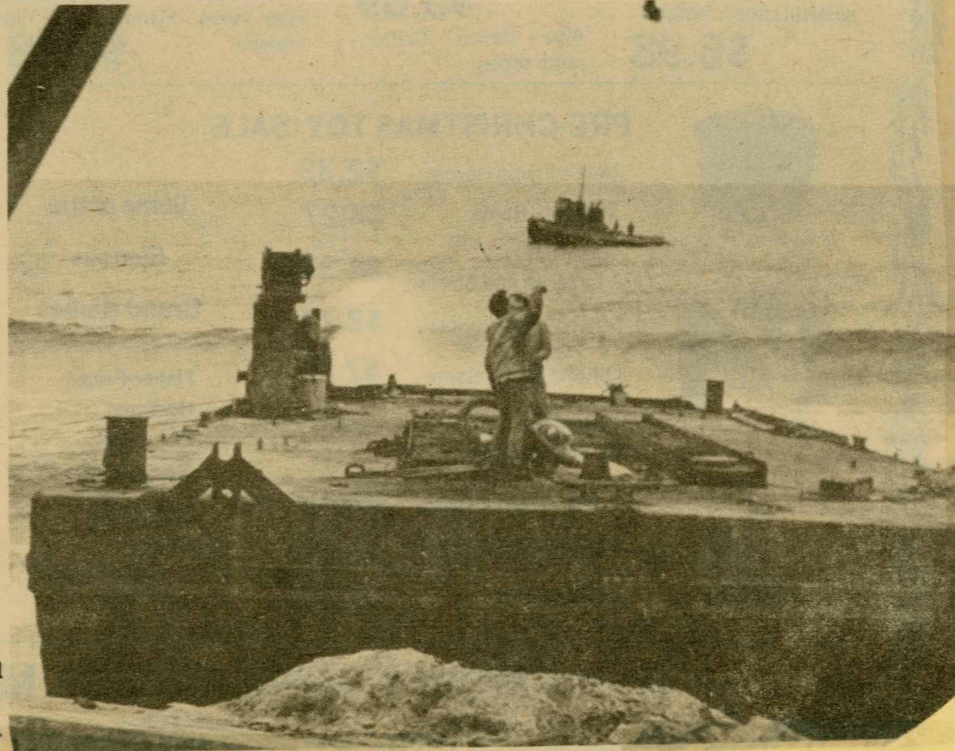
The station is positioned over the barge.



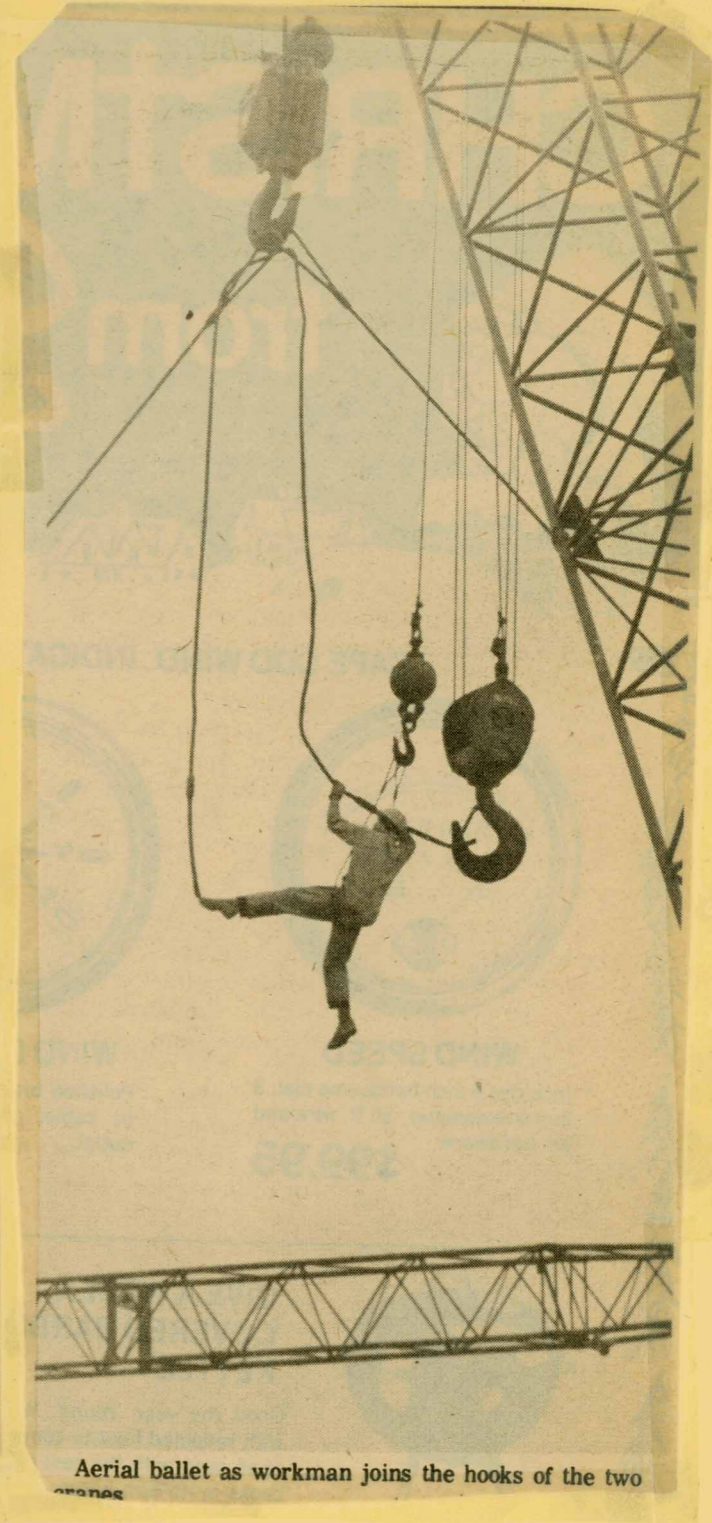
Historian Marcia Fader was the project supervisor for the National Park Service.



Part of the crowd that showed up to get a last look at the station before it left Chatham.



Right, the barge as seen through the front door of the station. The tug used to tow the barge to Provincetown waits just offshore.



Aerial ballet as workman joins the hooks of the two cranes