

1391



SHACK ON THE DUNES WITH WILD ROSES
Cape Cod, Massachusetts
(To right of Parking Area)
- 1957 -

- NEW BEACON -

DECEMBER 16, 1964

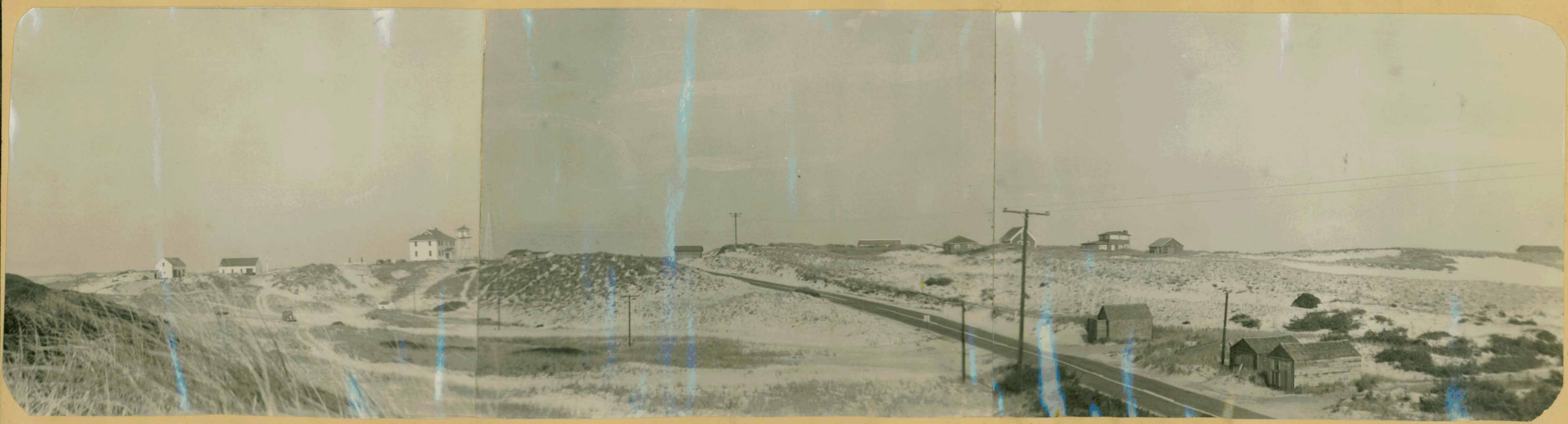
Change Of Command At Race Point Station

Boatswain's Mate First Class Ralph Morris of North Truro is now in charge of the Race Point Coast Guard Station, following a change of command ceremony December 10. He replaces Chief Boatswain's Mate Louis Laney, who has left for a new assignment.

Chief Morris, former executive officer at the station, has been in the Coast Guard for 12 years, many of them spent on the Lower Cape. His first assignment after leaving boot camp was at Race Point.

Chief Laney, whose home is in New Bedford, has been in charge at the station since June, 1962. He reported Monday aboard the cutter Yakutat, a weather ship operating out of New Bedford.

It was also announced that the station's 36-foot lifeboat had been transferred to Point Allerton for the winter



Race Point Coast Guard Station

----- September 1952