

September 21, 1950

No Honky-Tonk

A bathhouse is to be constructed by the State on the New Beach at Provincetown. Steps are already being taken to prevent the "honky tonk" influence from creeping in via mobile hawkers or any catch-penny device. Selectman Irving Rogers spoke up against this at the recent meeting of the Provincetown Civic Association. He also discussed ways of handling the parking of cars, and sanitation facilities.



THURSDAY, NOVEMBER 9, 1961

Longest Highway Starts At Cape-Tip

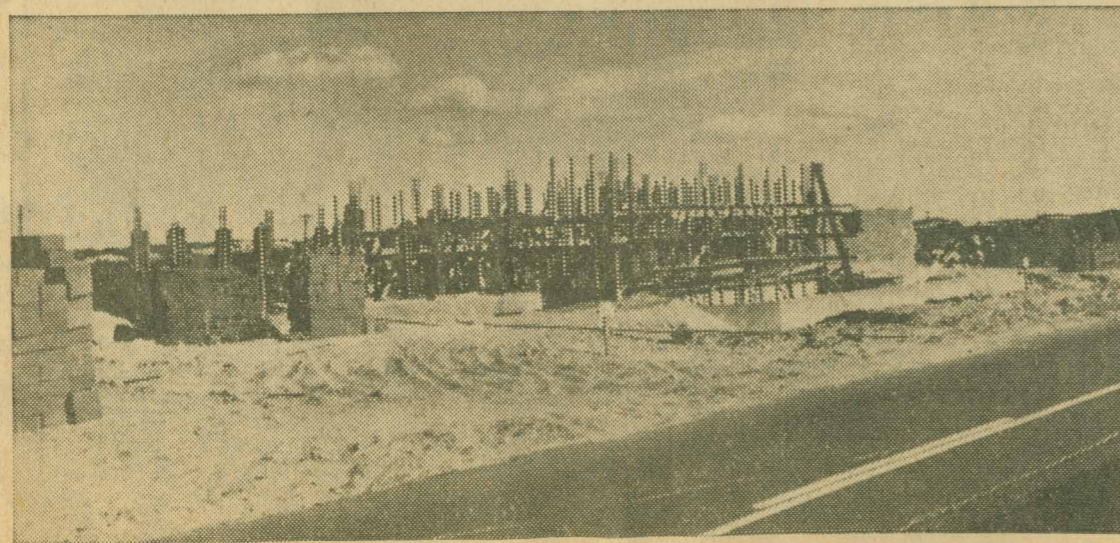
Beginning at Provincetown, where the Pilgrims first landed, stretches the longest highway under one name in the United States. Known as the Grand Army Highway, it runs 3,654 miles, across the continent to Long Beach, Cal. It took 25 years to build and 16 years to enact legislation in 14 states to give the GAR Highway its official name.

New Beacon-April 20, 1960

The Provincetown Civic Association is wondering what ever became of the large wooden sign which used to tell motorists arriving at the New Beach traffic circle that they were at the extreme east end of Route 6, on which they can travel 3,000 miles to California. The group voted to write the DPW requesting that the sign be found and replaced.

CAPE COD STANDARD-TIMES, THURSDAY, SEPT. 11, 1952

Bathhouse Being Built at Cape-tip



(Cape Cod Standard-Times Photo)

Under construction is the large State-owned public bathhouse at New Beach, which is expected to be completed this Fall and ready for use next season. General contractor is M. F. Roach Construction Company, Bridgewater. The site of the bathhouse is to be the terminus of the Mid-Cape Highway.

CAPE COD STANDARD-TIMES, TUESDAY, AUGUST 28, 1962

Cape-end Road Sign Is Removed

PROVINCETOWN, Aug. 28 — A sign, which had been posted at the New Beach Bathhouse end of Route 6 declaring it to be the eastern terminus of the trans-continental highway, will not be replaced at this time, the Provincetown Civic Association was notified today.

In a letter from Joseph R. Kyrouz, acting District Highway Engineer, answering a letter of inquiry as to why the sign had been taken down, Mr. Kyrouz said the "sign in question was removed due to deterioration of legend and stock."

The State official continued that "due to the work load on billboard signs, only necessary directional signs are being constructed by our Wellesley shop. Therefore, this sign will not be replaced at this time."

The sign declares Provincetown to be the eastern terminus of the trans-continental highway, and also states mileage to the western-most point in California.



New sign on the New Beach Road. Road to the left of road marker goes to bathhouse

- October 13, 1957 -