

- February 6, 1958 -
Bids for the sale and removal of
the Coast Guard boat house at Long
Point will be opened Friday,
February 8th.

Floated Homes

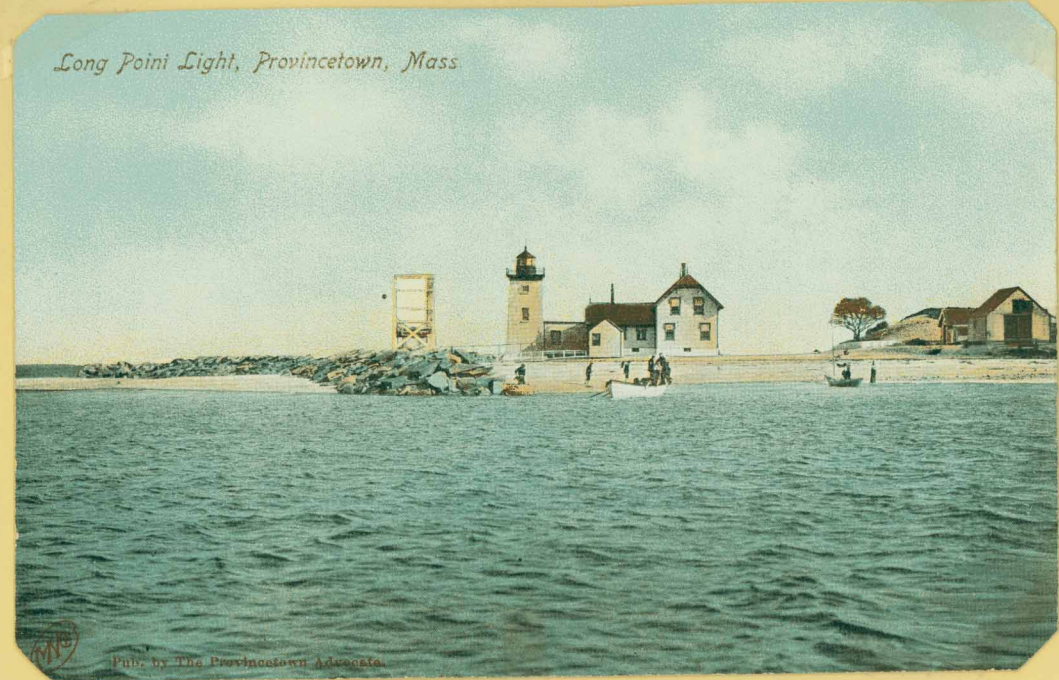
Long Point Light is a fixed
beacon light in a square brick
tower, guarding Provincetown
Harbor entrance. At one time, a
settlement of houses was at Long
Point, but the inhabitants moved,
house and household, to Province-
town proper by floating homes on
scows across the harbor.

Also a harbor facility is Wood
End Light, which is closer to
Provincetown, beyond the end of
the jetty which extends out from
near the Pilgrim Landing site.

It was near Wood End in 1927
that the Submarine S4 sunk after
a collision. Messages were tapped
out by the trapped men but all
rescue attempts failed and 40 men
died. Wood End, a white, brick
towered light, built in 1872, is
Cape Cod's only flashing red
beacon.

Race Point Light can be seen
in the distance from the scenic
highway that rounds the Cape. It
is Provincetown's third light. Cape
Coddors call the stretch of beach
that extends from it to Peaked
Hill Bars, "The Race" and it has
a notorious record for ship-wrecks.
Built in 1816, rebuilt in 1878, Race
Point is a white conical steel
towered light that guides ships
after they pass Highland Light.

Long Point Light, Provincetown, Mass



Pub. by The Provincetown Advertiser

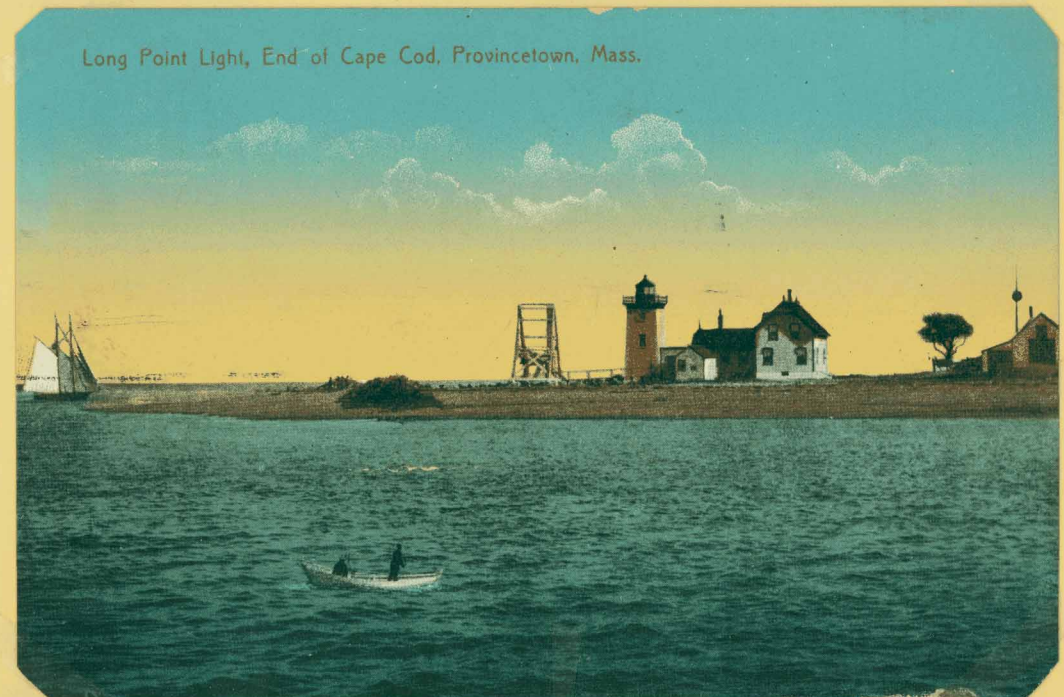
* 1907 *

Long Point Light, Provincetown, Mass.



- 1908 -

Long Point Light, End of Cape Cod, Provincetown, Mass.



- 1921 -