

1259

The Wood End station's importance to the lower Cape and Provincetown is due to its location, close to the heaviest shipping. Its crew, picket boat, is usually called on to perform most of the rescue, towing and emergency work of the Cape tip. Race Point station is the nerve center with its radio equipment, and telephone station, including stations as far as Nauset at Eastham.
June 1937

Wood End Coast Guard station, built in the '90's, is the newest on the Lower Cape. 1939

First Coast Guard Cutter was launched in 1791. It was the 50-foot schooner Massachusetts.

The U. S. Coast Guard has participated in every war fought by the United States since 1790.

July 17, 1937
The crew of the Wood End Coast Guard Station was called out at 5 o'clock Tuesday morning to tow the gasoline dory of Samuel Atkins in to the beach here. The dory had sunk at anchor during Monday night's rough west breeze. The Coast Guard boat brought her into the flats where she could be reached at ebb tide.

October 14, 1937

Coast Guard Saves Four Fishermen

Take Disabled Boston Trawler In Tow In Heavy Sea

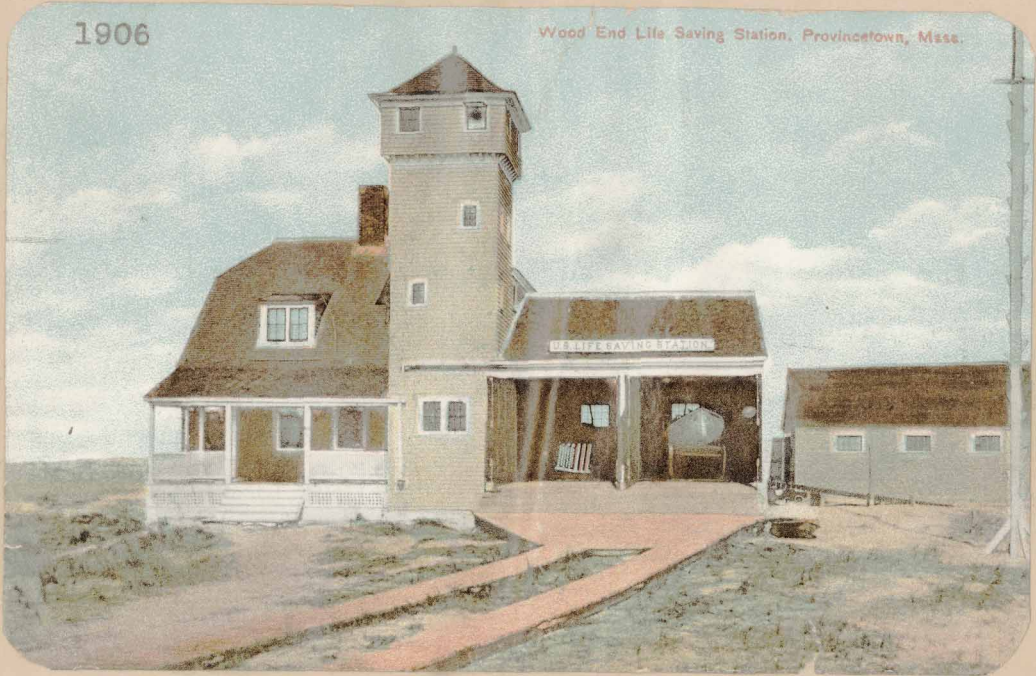
Four men on the Boston motor trawler, skippered by Captain Vincent Marino, 279 North Street, Boston, and loaded with 2,000 pounds of ground fish, narrowly escaped disaster in a raging sea off Race Point Monday night, when their distress signals, four miles out over turbulent waves, were picked up by the Race Point and Wood End Coast Guard Stations.

A Wood End surf boat with Chief Boatswains Mate Joseph A. White in charge took the disabled craft in tow an hour and a half after flares of gasoline soaked rags had first been sighted. A motor break-down earlier in the afternoon left the 40-foot boat drifting at the mercy of the sea. After attempting for two hours to repair the engine Captain Marino dropped two anchors to avoid drifting into the rip tides of Race Point.

"It was so rough a 75-pound sand bag in our dory was tossed right out of the boat" he said.

Surfman Edmund Silva was doused when a big comber filled the after cockpit on the return trip.

No difficulty was encountered in making contact with the disabled craft, the Wood End boat coming alongside and tossing a line aboard. Chief White ordered the St. Michael's anchor ropes cut when it became apparent that the crew could not haul them aboard. The trawler was anchored inside Long Point for the night and brought into Sklar-off's this morning. Captain Marino had 2,000 pounds of ground fish aboard.



1906

Wood End Life Saving Station, Provincetown, Mass.

January 1938
Both the Wood End and the Race Point stations now have 15 men crews.

They Made Out Hunkey-Dory

ON December 17, 1903, two Portuguese trawlers of Provincetown had a chilling if not thrilling experience. They were fishing just off Provincetown, one mile south of Wood End, when suddenly their dory capsized. The sea was running rough, the wind was strong and cold. Down into the cold sea went the dory, and the two men went down with her. She sank because of her ballast, but near the bottom the ballast fell out. Up she came, and up came the two men. They clung to her, and surfacing, yelled for help. After twenty minutes of immersion in the near-freezing water, their cries were heard, and two fellow trawlers managed to pull them, all wet and all but frozen to death, and unconscious, into their boat. The men were rushed to the Wood End lifesaving station and soon brought to consciousness and recovery.

Wood End Aids Yacht on Sand

Sept. 9, 1937

Coast Guardsmen of Wood End station helped the yacht Wyvern of Harwichport off the sands of Long Point outside Provincetown early Monday morning.

The 24-foot craft, in charge of P. C. Putnam of Brookline and an unidentified companion was en route on the first leg of a voyage from Boston to Shelburne, Nova Scotia, which prompted Coast Guards to remark that the yachtsmen were taking a long chance in venturing into Nova Scotia waters in such a craft at this time of year.