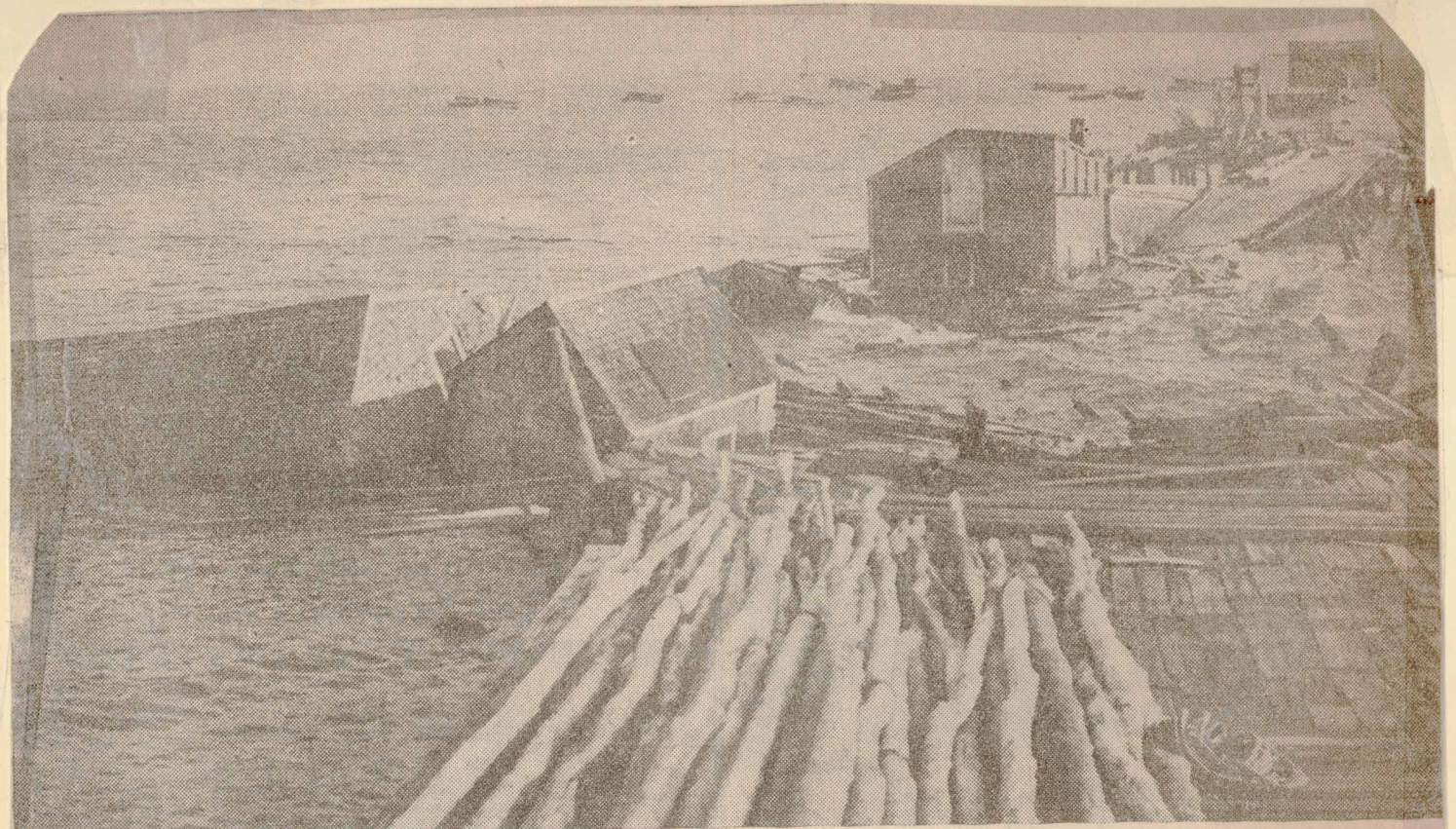
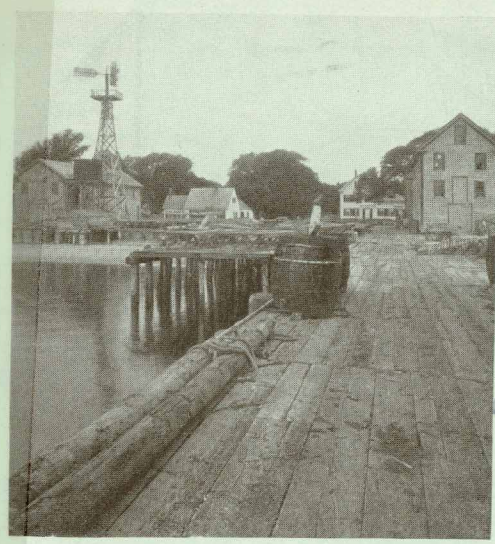


Lobster Traps on Hilliard's Wharf - - 1964



Dec. 9, 1937 WHEN WINTER COMES TO PROVINCETOWN

This long cold storage wharf and its half dozen buildings collapsed into the sea at Provincetown yesterday after an all night pounding by a 70-mile-an-hour gale. Loss was estimated at \$40,000 as Provincetown fishermen began salvaging operations. (Associated Press Photo)



FISH FLAKES, FISH HOUSES AND WHARF, PROVINCETOWN.

The Perry Pictures Company, Boston, Mass.

Oh John, -  
it's no nothing  
but fish! fish!  
fish! fish all  
the time -  
Best regards  
for all - Paul

Phd  
Wharf's ->

Hilliard's Wharf in 1898. Turn over carefully