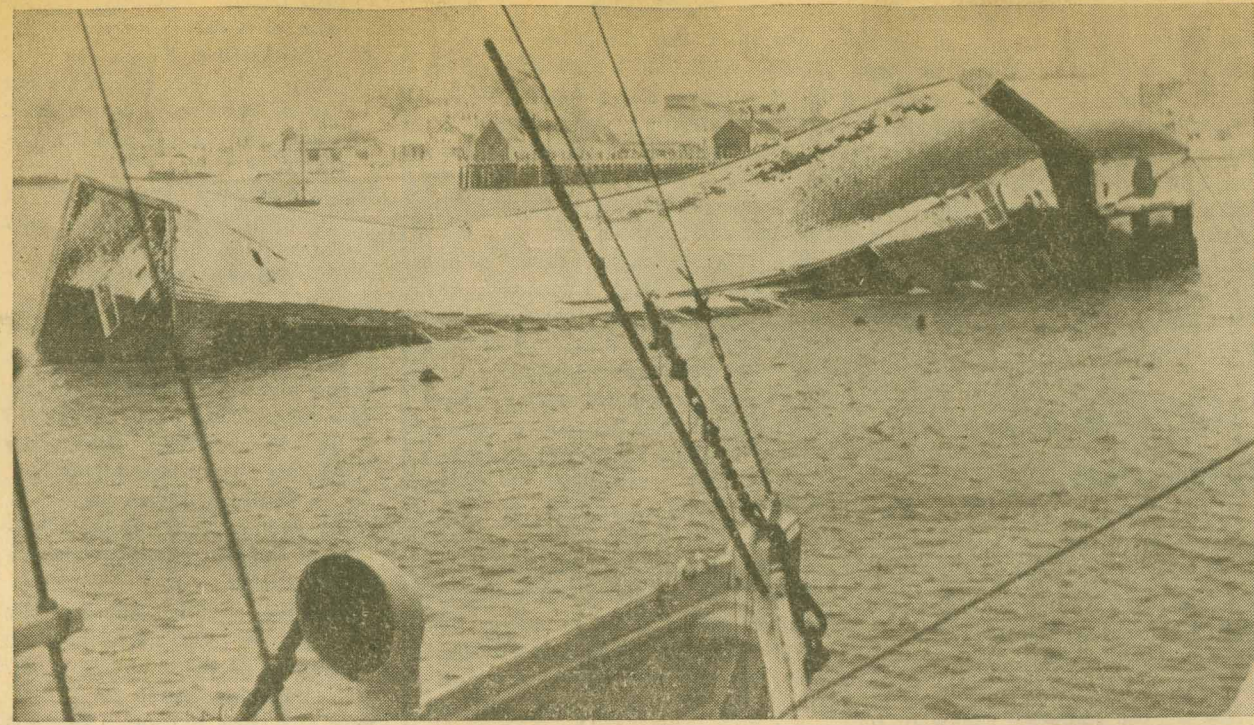


### 80 MPH. GUST LIFTS WAREHOUSE FROM MONUMENT WHARF



A gust of wind clocked at 80 mph. lifted this 60-foot long storage building from Monument Wharf and dumped it on the sand at the west side of the pier. A tuna seine valued at \$40,000, owned by the Silver Mink was retrieved from the building early this week by the crew of the boat, who used the Silver Mink's winches to lift sections from the partially collapsed warehouse. The high winds on Thursday night were part of a storm which left about two feet of snow on Provincetown.

New Beacon - March 4, 1960