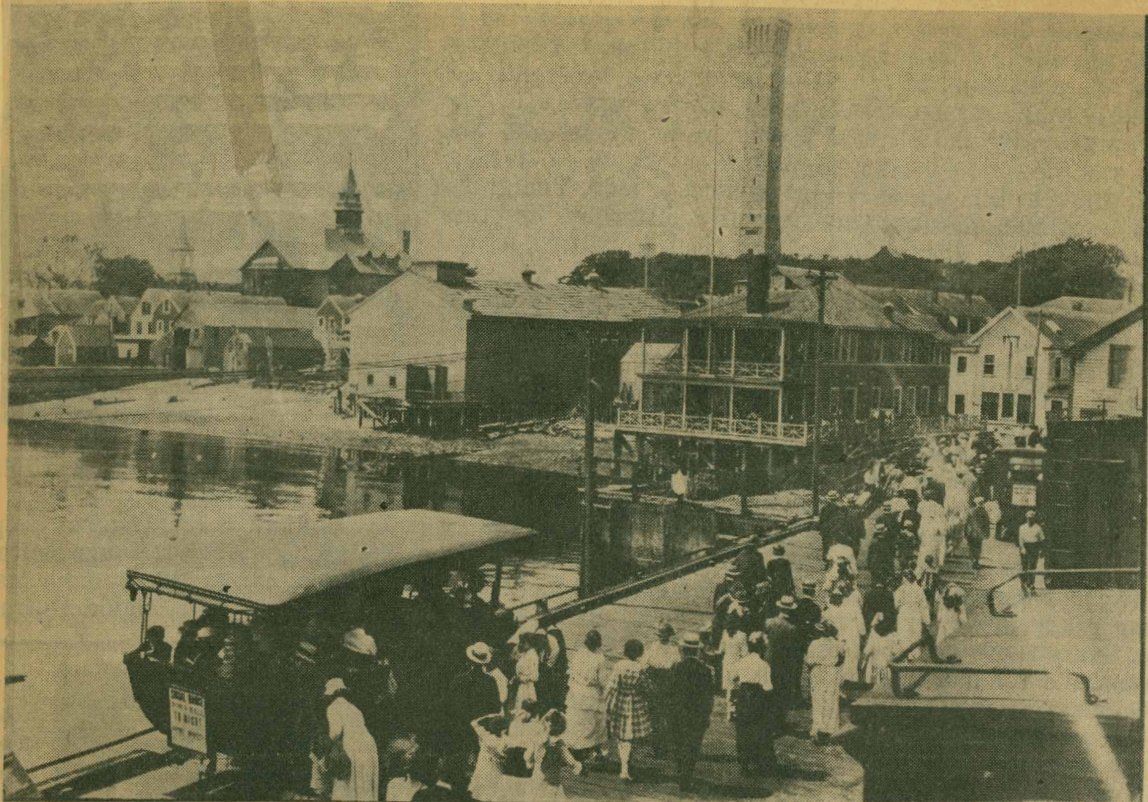
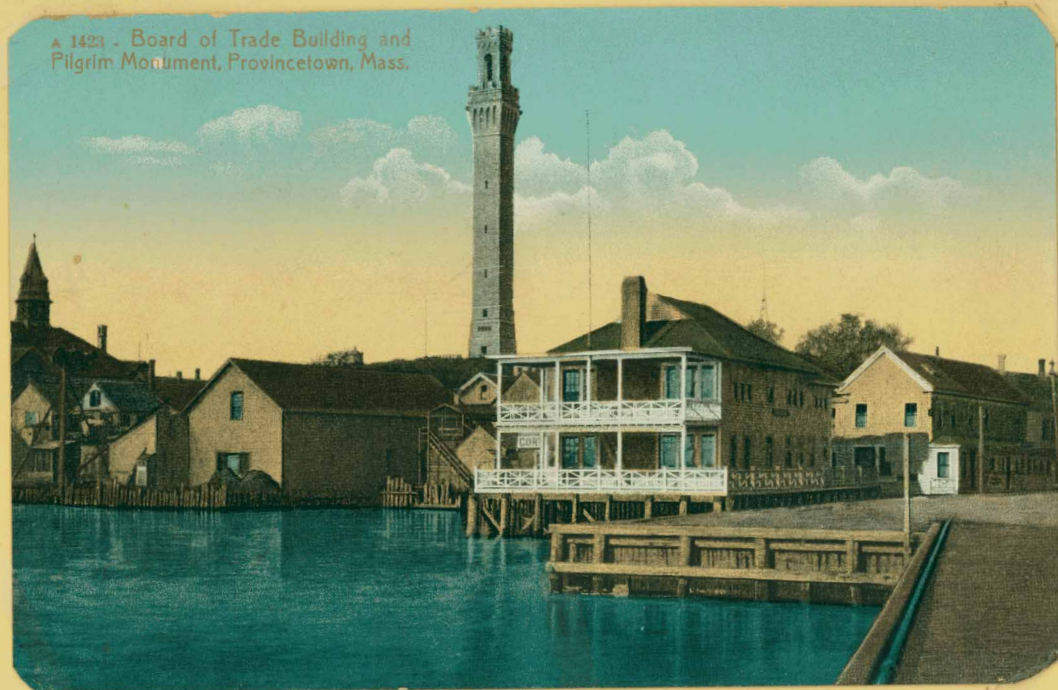


PROVINCETOWN, MASS.

THURSDAY, JUNE 12, 1969



. . . It's a calm summer day about 50 years ago . . . passengers off the steamer Dorothy Bradford saunter up Railroad Wharf or ride in William "Billy Nick" Nickerson's chain-driven accommodation . . . past photographer Irving Rosenthal standing on top of a New Haven Railroad boxcar . . . toward the Chamber of Commerce building with its wide porches. Some of them visited the relatively new Pilgrim Monument. Others may have gone to the "moving pictures" at Frank Atkins' theatre (center). One or two may even have visited the Congregational Church, whose spire rises at the left of Town Hall's imposing cupola. Courtesy Cyril Patrick



A 1423 - Board of Trade Building and Pilgrim Monument, Provincetown, Mass.

\*1912\*

917 View from Railroad Wharf at Boat Time, Provincetown, Mass.



8603

176—Railroad Wharf and Pilgrim Memorial Monument, Provincetown, Cape Cod, Mass.



5106-29-N

- 1935 -

1912 - Board of Trade with the Piazza, right.