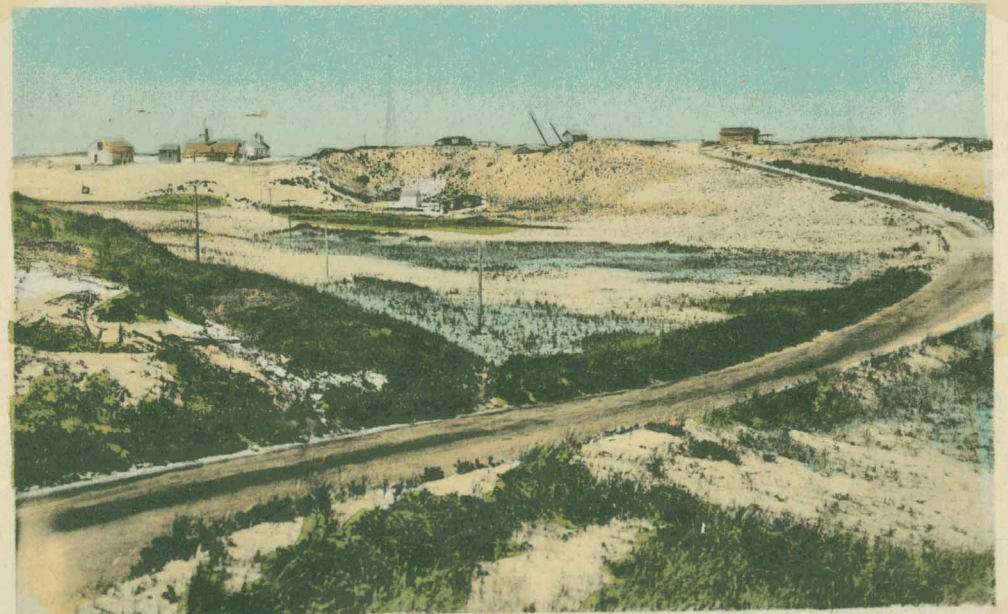


STATE HIGHWAY TO COAST GUARD STATION, PROVINCETOWN, MASS. CAPE COD.

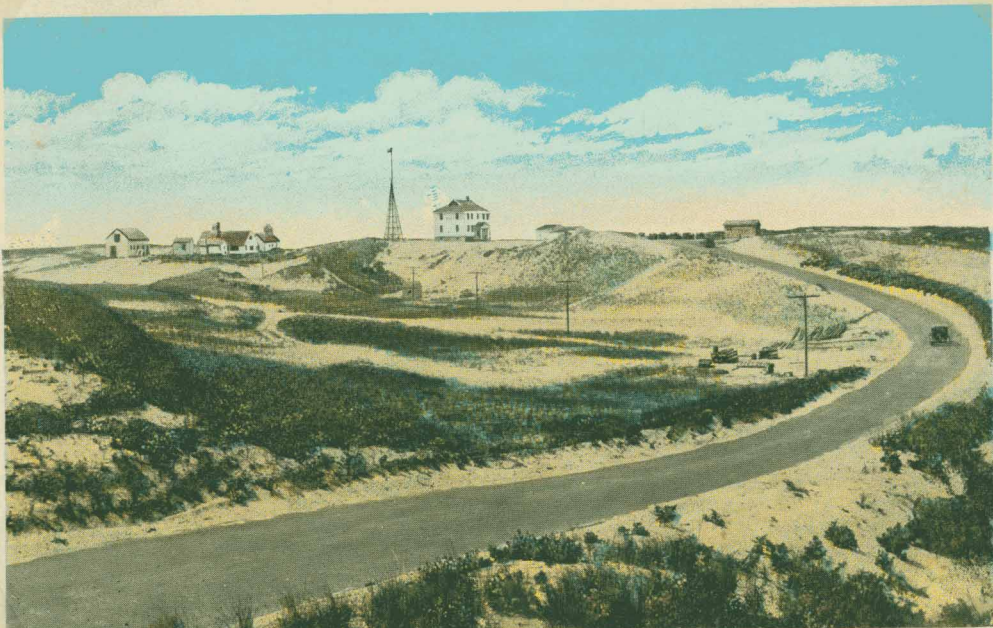
107985

From the top of the Grand View - - - - 1931



ROAD TO RACE POINT COAST GUARD STATION.

Closer view. Note the 2 masts of the Annie Spindler, Rum Runner aground in 1922 - - 1928



THE NEW STATE HIGHWAY APPROACHING RACE POINT COAST GUARD STATION, PROVINCETOWN, CAPE COD, MASS.

- About 1922 -

Note the old Life Saving Station on the left  
White bldg is the second Race Point Station (See  
Commercial St, Lancy's Corner for the Third Station)



The new Visitors Center where the wooden observa-  
tion platform was (preceding Page ) .... 1975