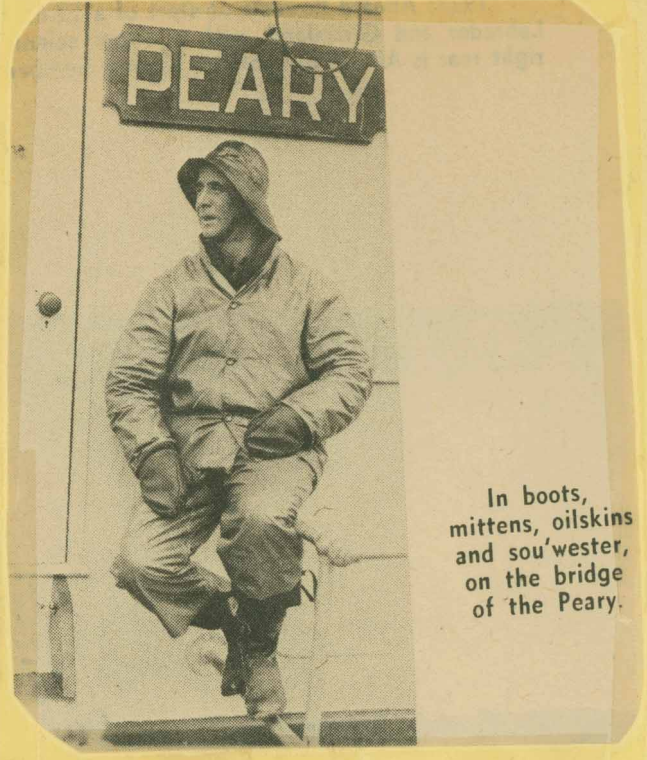


PEARY

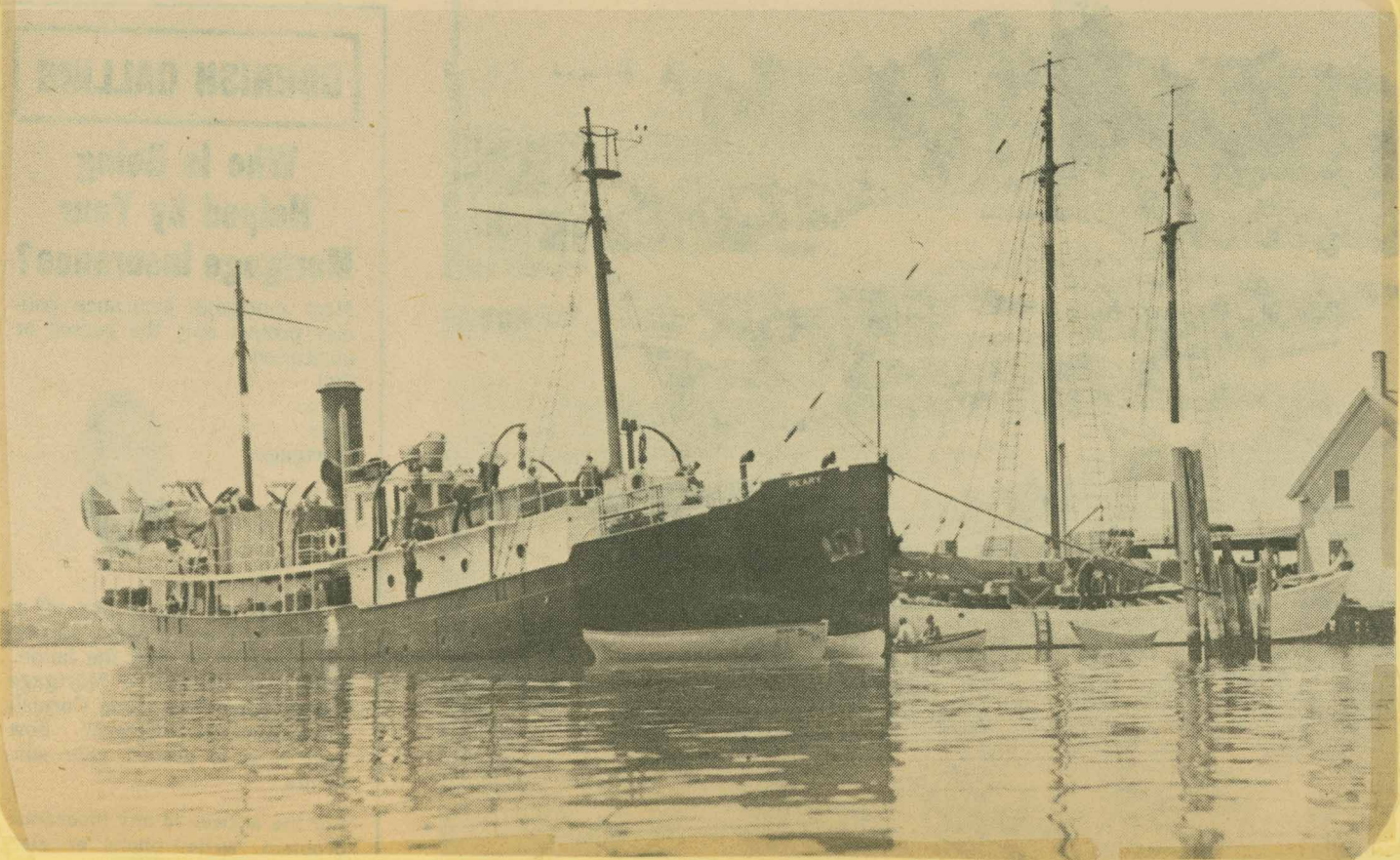


In boots, mittens, oilskins and sou'wester, on the bridge of the Peary.

1925: Steamer Peary and schooner Bowdoin, at Wiscasset, Maine, ready to sail for an Arctic expedition under MacMillan's command.



1949: At 75, MacMillan, shown here on the porch of his harborfront home in Provincetown with a model of Bowdoin, was planning his 29th cruise to the North.



1954: In his living room, explaining the intricacies of an Eskimo boat made of skins. Bowdoin is in the painting in the background, characteristically, with ice in the foreground and a glacier foot astern.