

340

181-1900



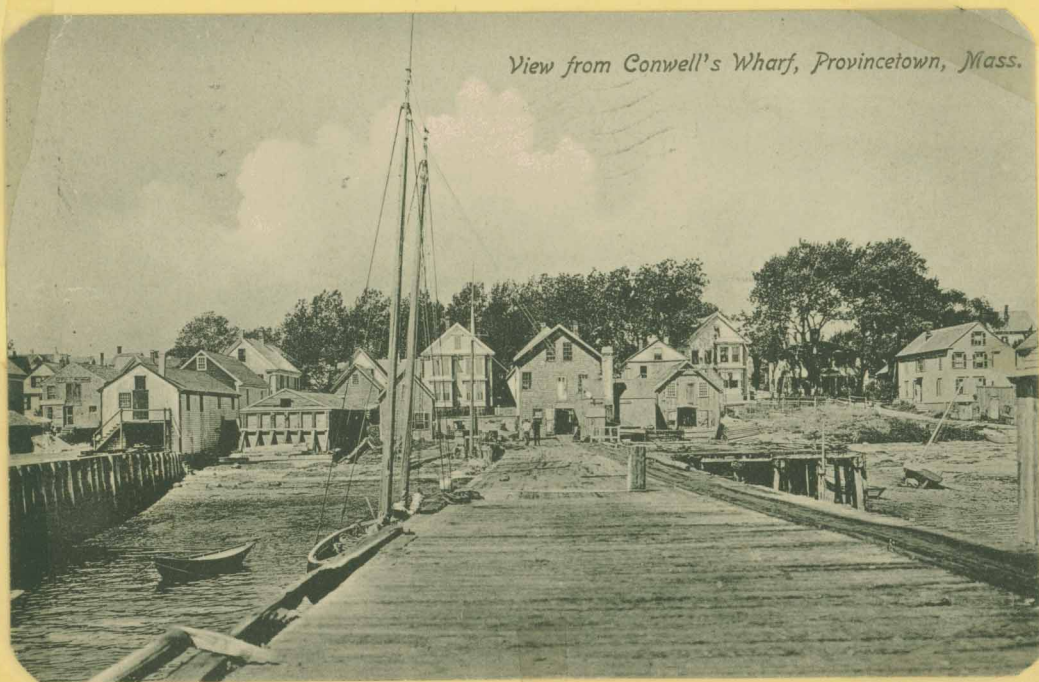
10323 Main Street Looking East, Provincetown, Mass.

Commercial Street facing East - 1908 - The Art Museum on left with the old Kibbe Cook house next (Mary Heaton Vorse); right, part of Burch's Market. Next was the lot of the Kibbe Cook Shipyard and the 2nd bldg on right (High roof), is the MacMillan House  
 The "Silver Leaf" House is right next to the Museum out of sight & before Kibbe Cook House



Commercial Street, East End, Provincetown, Mass.

Commercial Street facing East showing the Kibbe Cook shipyard on right with Pile-driver masts. Now shows a house next to the shipyard with the MacMillan house next to it. Note boardwalk and the "barge" going "down-a-long". - About 1907



View from Conwell's Wharf, Provincetown, Mass.

View from Conwell's Wharf - 1907 - Small Wharf at right: Charley Austen Cook's. White building on right, old H.S. Cook & Son's opposite Figure-head House (under tree) Ed Small Wharf on left

-- 1951 --

**BRYANT'S**  
**SELF-SERVICE MARKET**  
 PHONE 134 DELIVERY SERVICE

Broilers, 2 1/2 lb. average	lb. 45c
Fowl, 5 to 5 1/2 lb. average	lb. 45c
Rib Roast of Beef, choice	lb. 69c
<hr/>	
Frosted Spinach	pkg. 29c
Frosted French Fried Potatoes	pkg. 29c
<hr/>	
Oranges, Juicy, medium sized	Doz. 39c
Pears, Bartlett	6 for 29c
Seedless Grapes, Large Sweet	lb. 29c
Boston Lettuce	head 21c
Cucumbers	lb. 15c
Green Peppers	lb. 19c
<hr/>	
Sunshine Krispy Crackers	lb. box 28c
<hr/>	
Sugar	5 lbs. 45c
Clifton Pantry Flour	5 lb. bag 49c
Friends Beef with Gravy	16 oz. tin 59c
Nation-wide Coffee	2 lbs 95c

CHOICE LIQUORS, WINES BEERS, ALE  
 AMPLE PARKING FOR OUR PATRONS ON OUR  
 OWN LOT NEXT TO STORE