



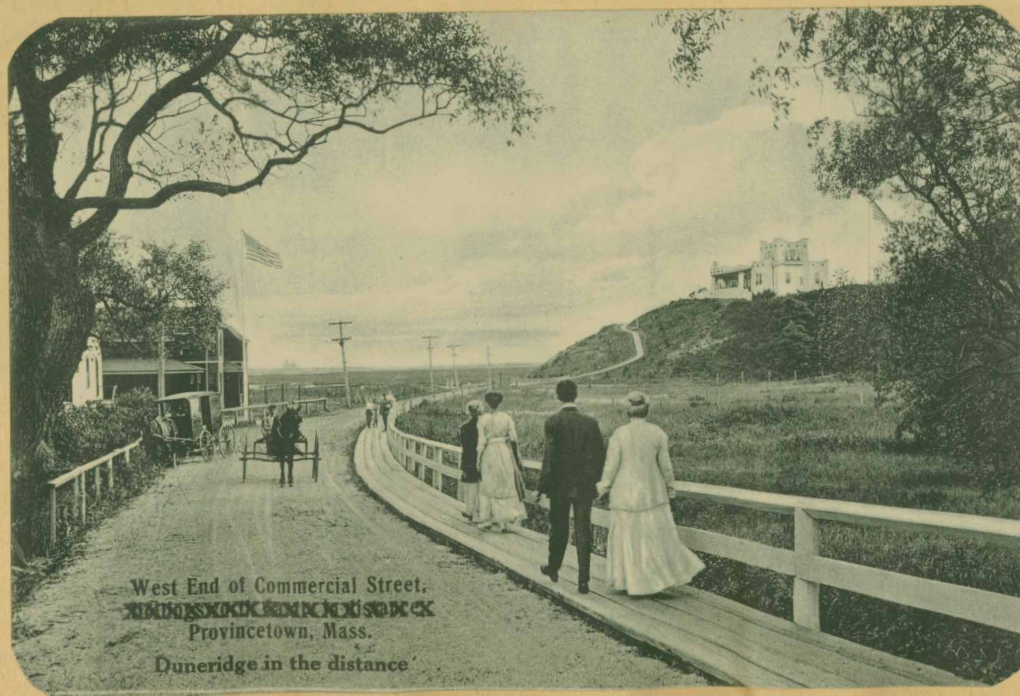
Moonlight behind Red Inn. - 1908 - Wood End Lighthouse in background.



-- 1905 --  
Facing Gull Hill, east. The old Long Point Bakeshop, left.



Same scene as above, right. Bakeshop, left. 1905



And now facing West. Sandhurst Cottage, left where flag is. The Castle, or Duneridge, right. 1905/