

(See postcard below)

NEW BEACON - April 9, 1958

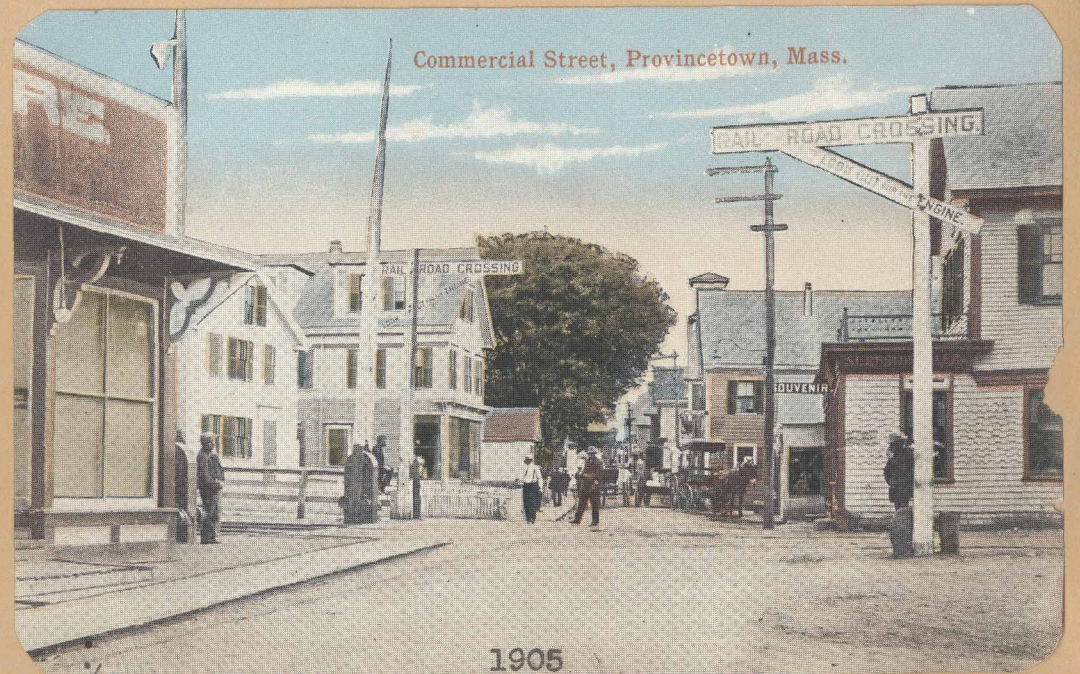
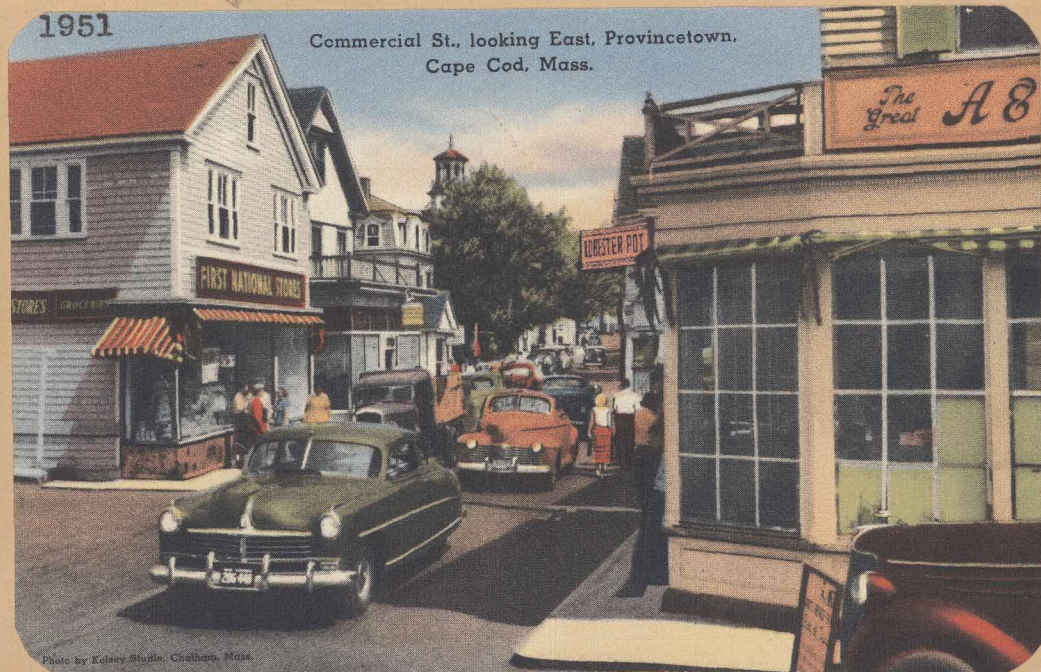
Changes are going on all the time in our little town. There will be no First National Store in Provincetown after this week. The one on the corner of Commercial and Standish Streets is closing permanently on Saturday. The little store at the West End closed sometime ago. The nearest one will be the Super Market which is now under construction in Wellfleet. Many who have been shopping there for years are going to miss the store in the center of town, which was within easy walking distance. It was a friendly store at which to do your weekly marketing. The clerks all seem to try extra hard to give the best service and with a smile, too. A First National just isn't a First National to us without George Ross. We think that when we first came to Provincetown, George was the first clerk to wait on us. Then there is Frankie Henrique, also at the grocery counter, who always did his bit to give good service. Over at the meat counter there is Manny Cabral, Manuel "Rabbit" Coelho and Manuel "Wells" Rego, all very patient and pleasant—we don't think it's always easy to be patient at a meat counter. Then there is Lionel Medeiros who sells the vegetables. That job must require a bit of patience, too. Too many customers always want to pinch the tomatoes. We hope that all these good clerks will have good jobs elsewhere. Now is the time to get acquainted with Nelson's market on Bradford Street, Bryant's Market at the East End, Commercial Street, Perry's Market at West End Commercial Street, Fisherman's Market and Cabral's Market, both on Bradford Street. They all have pleasant accomodating clerks, too, and you can even get special service from the proprietors.

*Lewis' Store is after wharf pictures*



A 1962 postcard of Railroad Square Building on left marked "Restaurant" used to be the First National Store mentioned in article at left.

Center Methodist Steeple (now Chrysler Museum) can be seen in the background.



Lewis's New York Store