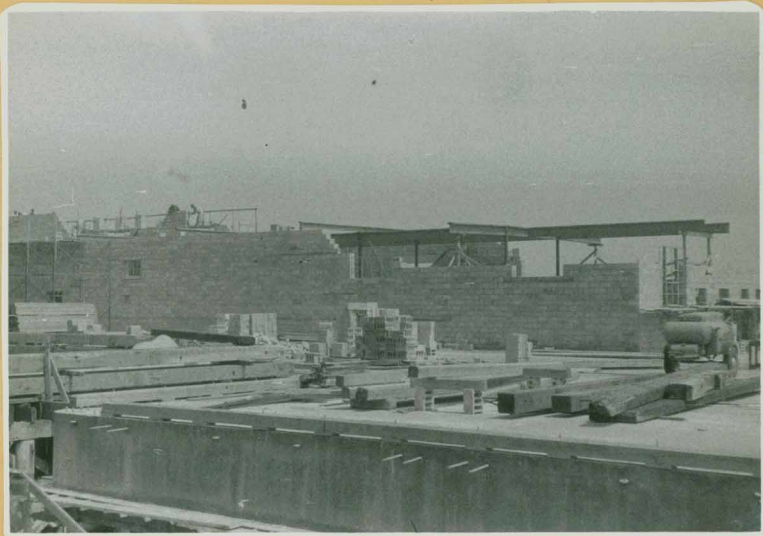




Old Wharf, left; new one, right. June 1956

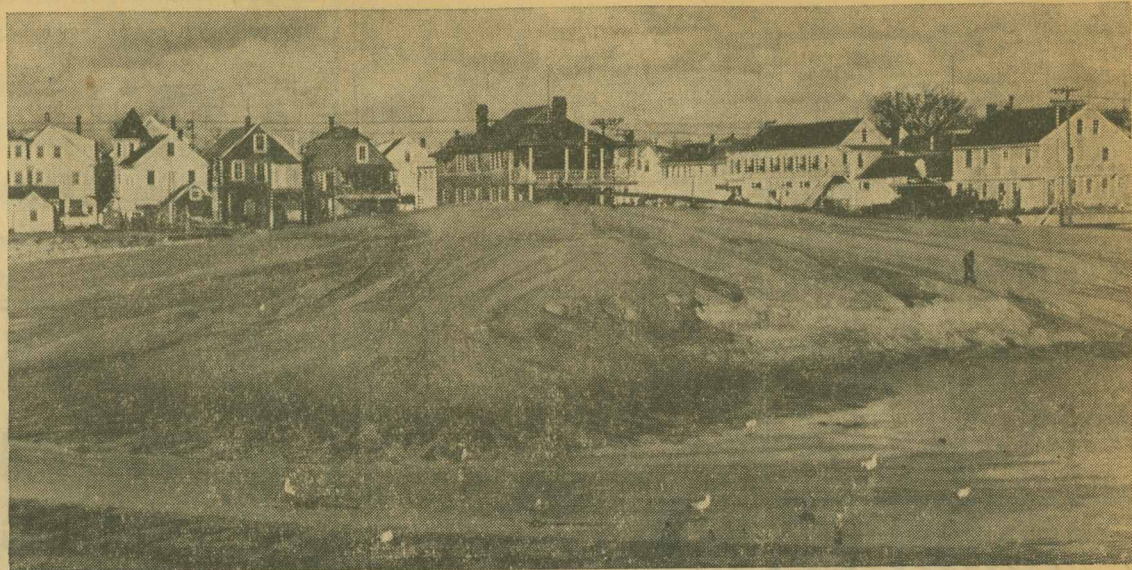


\* June 1, 1956 \*



\* June 1, 1956 \*

### Huge Sand Mound Grows Daily As Dredging Goes On



- November 29, 1956 -

John D. Bell Photo

Despite the fact that the dredging operation around the new municipal pier has been seriously hampered by storms, a huge pile of sand has been deposited already between the new pier and Monument Wharf. The top of this pile is about on level with the second floor of the Chamber of Commerce Building beyond. This picture was taken about mid-way along Monument Wharf. This is only a small part of the sand that will be pumped into this area.

On Tuesday night members of the Provincetown Board of Selectmen met with Joseph E. Macara, chairman of the Harbor Improvement Committee to determine what might be done to persuade the State Department of Public Works to take action in meeting its expected share in the cost of erecting a bulkhead between the two wharves to retain the fill that is being pumped into the area now and which storms might remove again, in large measure. State Senator Edward C. Stone was contacted and he told the local officials that he has an appointment with the new Department of Public Works Commissioner on Monday and that he will then take up with the Department officials the question as to their next move on the Cape End bulkhead. Senator Stone, who inspected the growing pile of sand between the two wharves when he was in Provincetown Sunday, said that he would let the local officials know on Monday just how the situation is developing.

### - November 8, 1956 -

### Dredge Arrives

The dredge "Gomeril" of the New England Dredge and Dock Co., which will remove 150,000 cubic yards of sand around the new Provincetown Municipal Pier arrived today and is berthed at the east end of the pier T.

Aboard was a large crew of workmen and operations on the dredging will begin soon to continue around the clock, 24 hours a day. A long string of pontoons to carry the sluice pipe is anchored near the dredge.



The Comeril Dredge - Dec. 27, 1956