

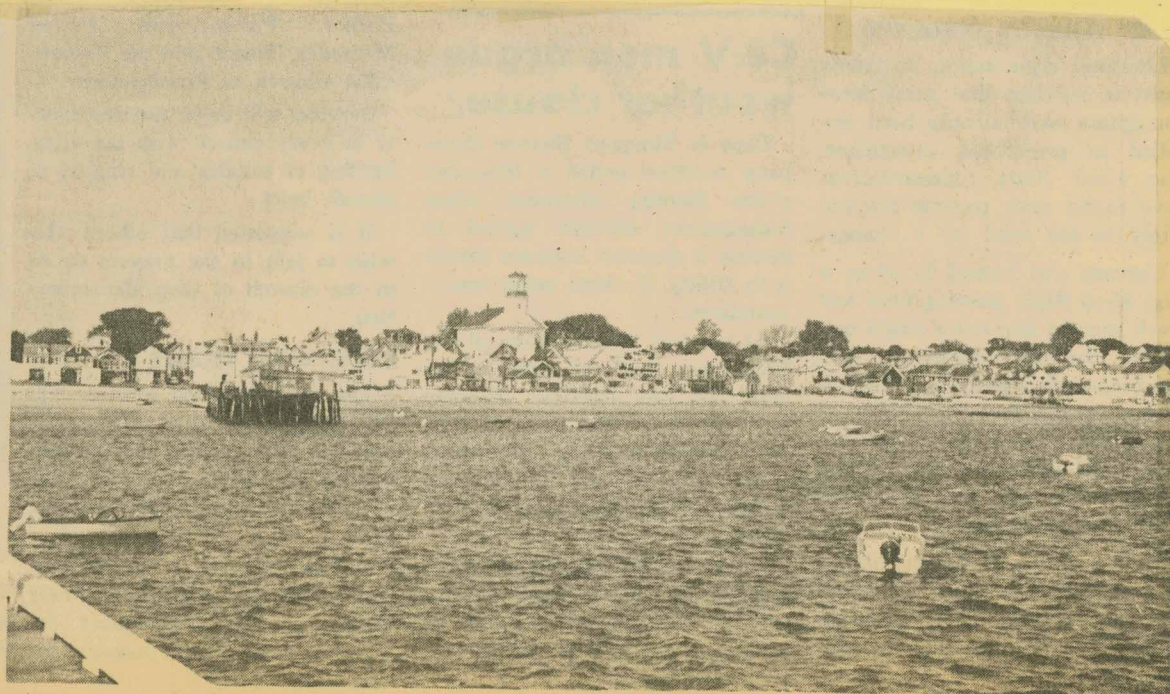
. . . In 1908 there was no Pilgrim Monument on Town Hill, no crowded parking lot between the main wharf and Sklaroff's — in fact, no Sklaroff's wharf yet. The Chamber of Commerce was studying the advisability of erecting its own building. Frank Atkins' stable is about where the new comfort station will be built. Win Dearborn's meat market is now the Provincetown Liquor Mart. At center,

slanting poles mark where Theodore Nickerson landed granite from barges and cut grave markers. Far left, the smaller steeple on the Congregational Church (now the Art Cinema) stands beside the higher one on the "new" Town Hall. Louis Snow photo courtesy of the Provincetown Museum.



FROM RAILROAD WHARF, as it was before 1899, Louis Snow caught these reflections. Center Methodist Church's tall steeple was taken down after the Portland Gale of 1898.

- Before 1899 -



FROM MACMILLAN PIER in 1968, at almost the same angle, the camera shows 70 years of change. The church is now the Chrysler Art Museum, the wharves mostly gone.

- November 13, 1969 -