

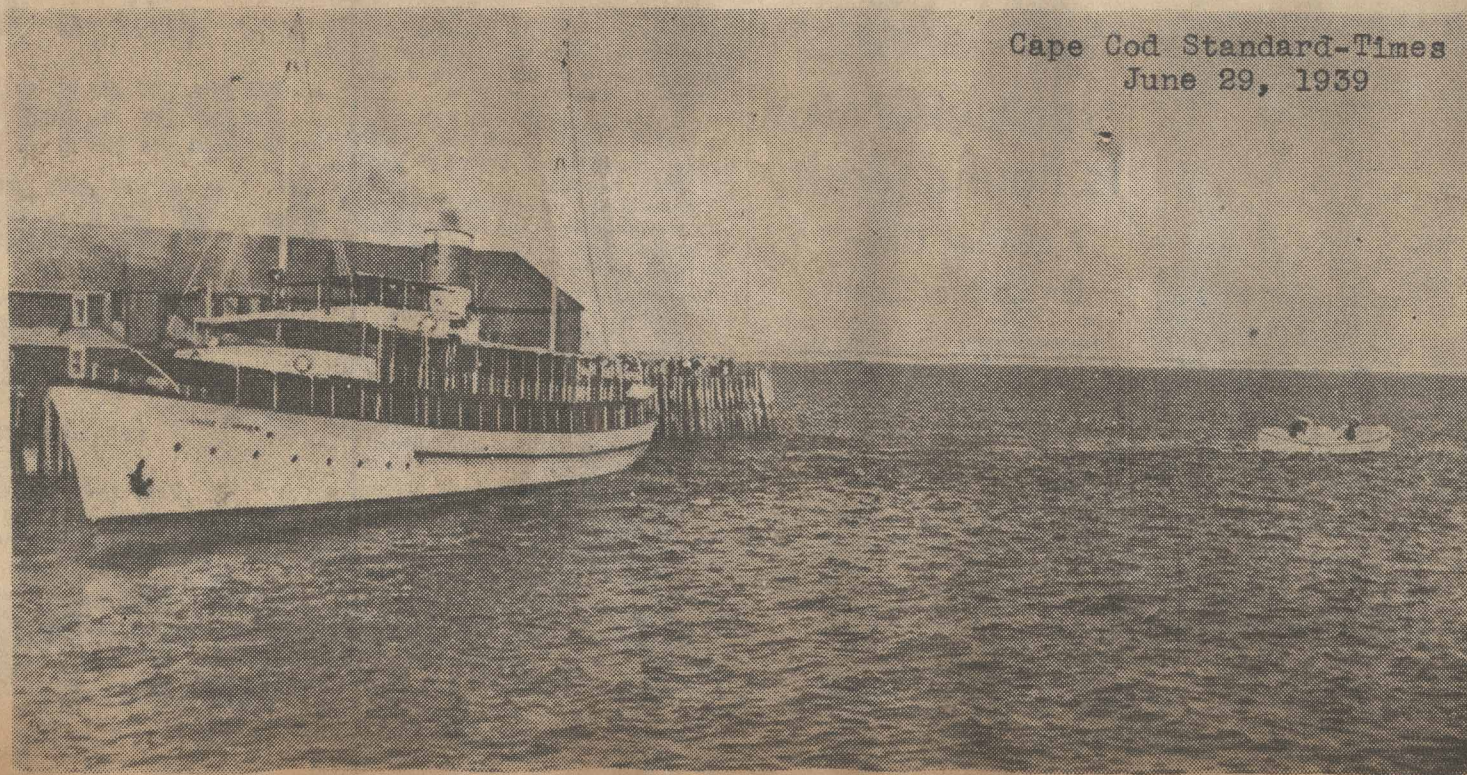


- August 1940 -

Mopsy on end of Railroad Wharf. S.S. Steel Pier making for Sklaroff's Wharf (or Green Wharf), the next dock. Long Point in the distance.

## Surfboat Helps to Pull Excursion Craft Free

Cape Cod Standard-Times  
June 29, 1939



With its own Diesel engines furnishing most of the power and the new Wood End surfboat exerting pressure on a stern line to prevent the craft from backing into Town Pier, the excursion steamer Yankee Clipper came off the sand bar where it grounded for three hours yesterday on its trip to Provincetown. Rescue efforts are shown above.

## Yankee Clipper Stops Service

Ship Discontinues  
Trips to Provincetown '40

PROVINCETOWN, Aug. 21—The excursion steamer Yankee Clipper docked at Provincetown today en-route from Boston to Philadelphia and almost simultaneously selectmen received a telegram from Captain Robert Burt stating that "because of conditions over which we have no control we will be unable to operate any longer this season."

Interviewed aboard the Clipper when it docked at the Town Pier to take aboard supplies, Captain Burt declined to amplify the statement sent to town officials. However, he denied rumors currently circulated to the effect that labor or engine trouble forced cancellation of trips here. He said he had no knowledge of any sale of the Yankee Clipper to this or any other government.

Captain Burt said he had received orders from the directors of the company to discontinue the Provincetown run and sail the Clipper to Philadelphia to be docked at the North Delaware Street Pier 3.

The Yankee Clipper is a Diesel-powered craft, and engines and pumps are installed in "dual" arrangement so that one set will continue to work in case the other goes wrong. Two-way radio equipment capable of reaching 3,000 miles will be available when the ship begins her season. Special pumps are set in operation in rough weather and they are capable of cutting down the roll of the vessel by half, Captain Burt said.

The vessel, now berthed at Pussey and Jones Shipyard at Wilmington, Del., was built in 1913 as a private yacht and was acquired and rebuilt completely about 12 years ago by Henry Ford. Named the Sialia, she has cruised domestic and foreign waters.

Passenger capacity of the boat will be approximately 1,000, Captain Burt said. She has a steel hull 221 feet overall and is 27 feet in the beam, and of 726 tons' burden. The vessel's hull is painted white. She has double deck awnings for use on sunny days and is fitted with mahogany housings. Captain Burt estimated that his operating crew will number about 26.