

THE

PROVINCETOWN

NEWS

VOL. I

SUMMER EDITION

NO. 1



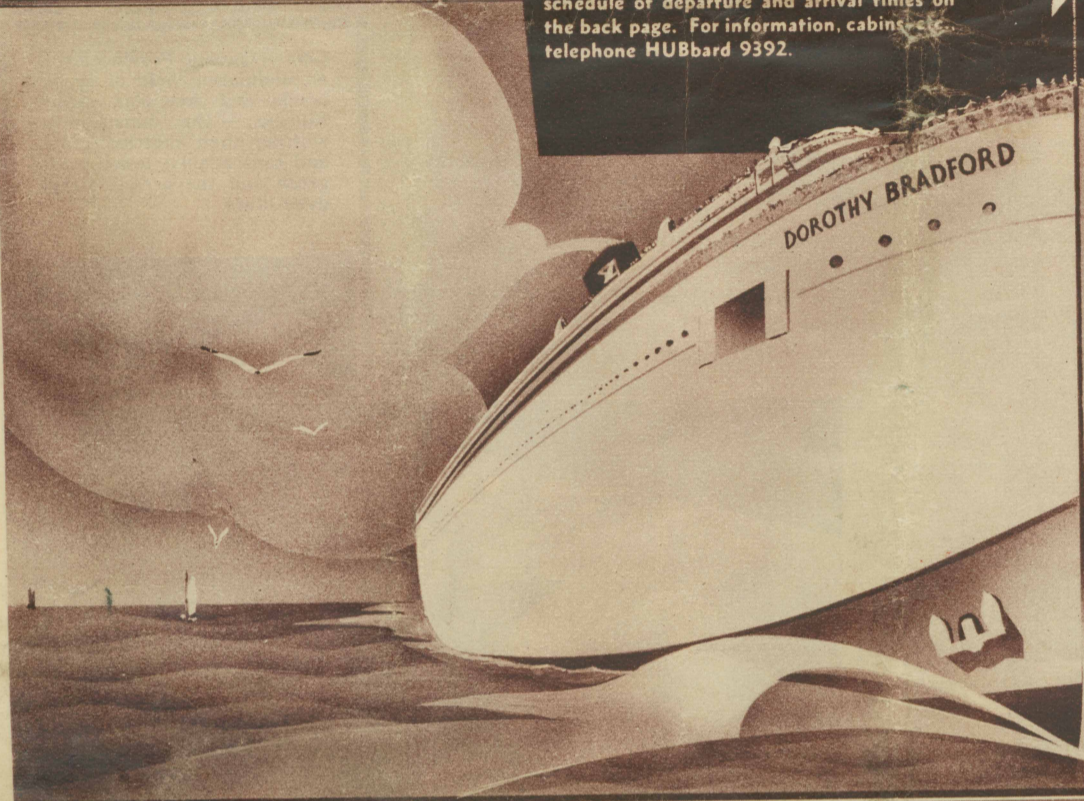
Above — MID-TRIP: S.S. Dorothy Bradford's passengers debark, eager to taste the novel joys of Ancient, Bohemian, Sea-faring Provincetown

100-mile sea voyage on the PROVINCETOWN BOAT sailing daily and Sunday BOSTON to PROVINCETOWN and return

Starting from LONG WHARF, Atlantic Avenue, foot of State Street, Boston. See schedule of departure and arrival times on the back page. For information, cabins, telephone HUBbard 9392.



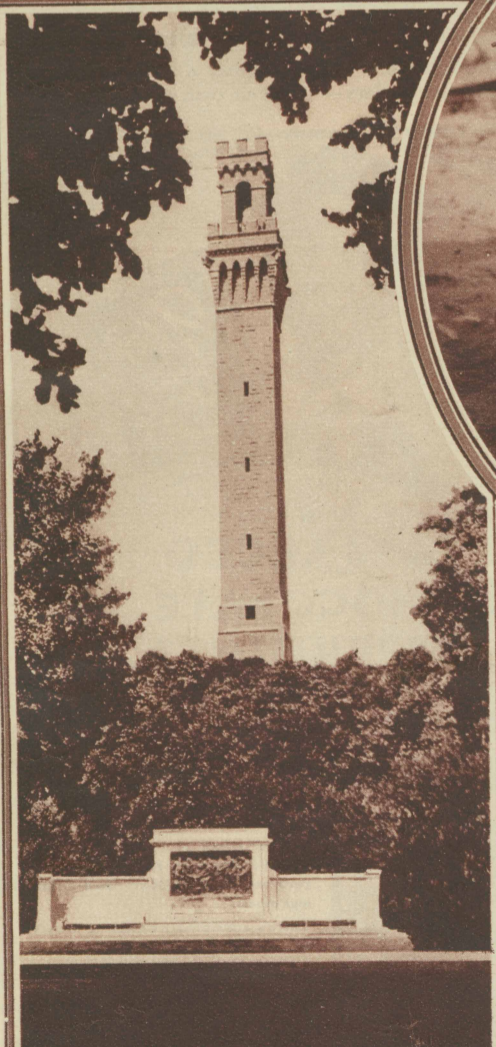
Above — THE FINISH . . . Against a darkening twilight sky, Boston's majestic Custom House Tower welcomes the "Dorothy Bradford" home.



Above — The S.S. Dorothy Bradford, luxurious recreation liner, outward bound on her daily 100-mile sea voyage from Boston to Provincetown and back. No better-equipped ship of her type passes Boston Light.

Above — On the newly-reconditioned S.S. Dorothy Bradford, you'll find deck-games, card-rooms, dancing, private cabins, luncheon bar, and a brand-new tap-room . . . costly pleasures of an expensive liner at a price that everyone can afford!

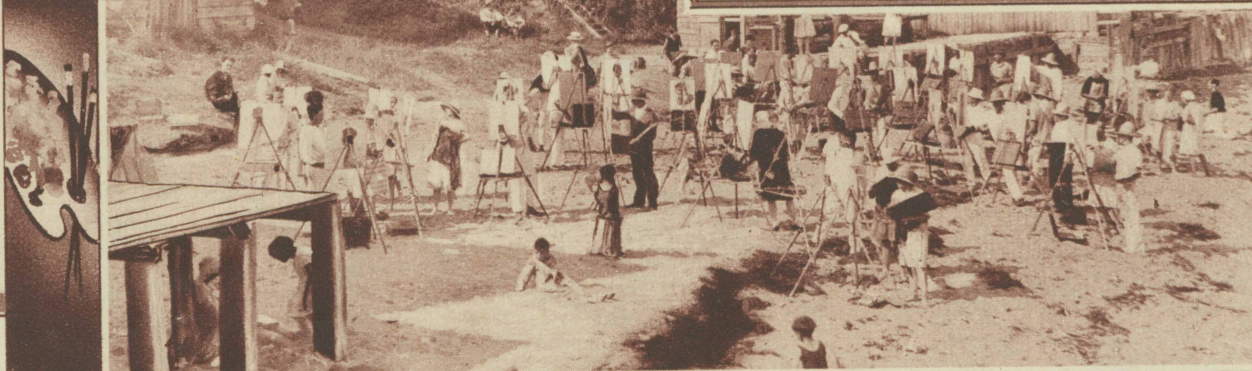
Below — All the joys of a trans-atlantic voyage are delightfully combined in a "Bradford" sailing: dancing, deck-games, private cabins for relaxation.



PILGRIM MEMORIAL MONUMENT
No Provincetown trip is complete without an ascent to the lofty, embrasured summit of the Pilgrim monument, which can be attained with ease. Admission: adults, 25c; children with adults, 10c. Daily 8 a.m. to 5 p.m.



"THREE'S COMPANY" IF THE THIRD IS "C. J." Above — Curran & Joyce beverages were chosen before all other brands for exclusive use on the S.S. Dorothy Bradford. Sip your favorite flavor at the refreshment bar and understand why.



Above — To Provincetown annually, lured by charm of town and dune and bay, America's largest summer art colony comes to work and play — to act their dramas, to show their pictures, and to revel at costume balls.