

PILGRIM MEMORIAL  
PROVINCETOWN, MASS

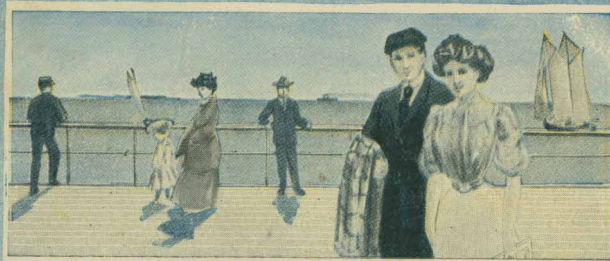


Season 1911. June 15 to Sept. 10

Steamship "Dorothy Bradford" leaves Bay Line Wharf, 400 Atlantic Ave. (one-half a block south of Rowe's Wharf, Elevated Station), **weather permitting**, week days at 9 A. M., Sundays and holidays at 9.30 A. M., returning from Provincetown at 2.30 P.M. week days and arriving at Boston at 6.30 P.M. Sundays and holidays the steamer leaves Provincetown at 3 P.M. and arrives at Boston at 7 P.M. Round trip tickets, \$1.00. One way 75 Cents.

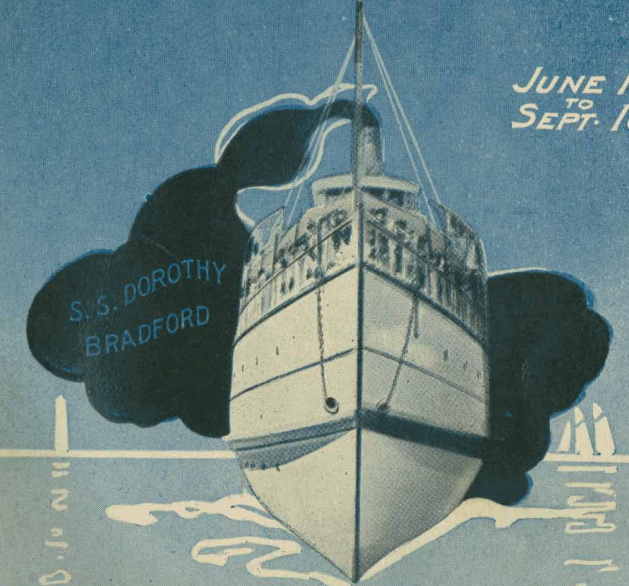
Telephones } Office, Main 6455  
                  } Wharf, Main 1411

(Subject to Change without Notice)



\$1.00 **BOSTON TO** \$1.00  
**PROVINCETOWN**  
**AND RETURN**  
**DAILY**

JUNE 15  
TO  
SEPT. 10



THE PILGRIM'S FIRST LANDING PLACE

BAY LINE CAPE COD

**CAPE COD S.S. Co**

400 ATLANTIC AVE.  
S. MOODY MGR.

ROUND  
TRIP

ONE  
DOLLAR