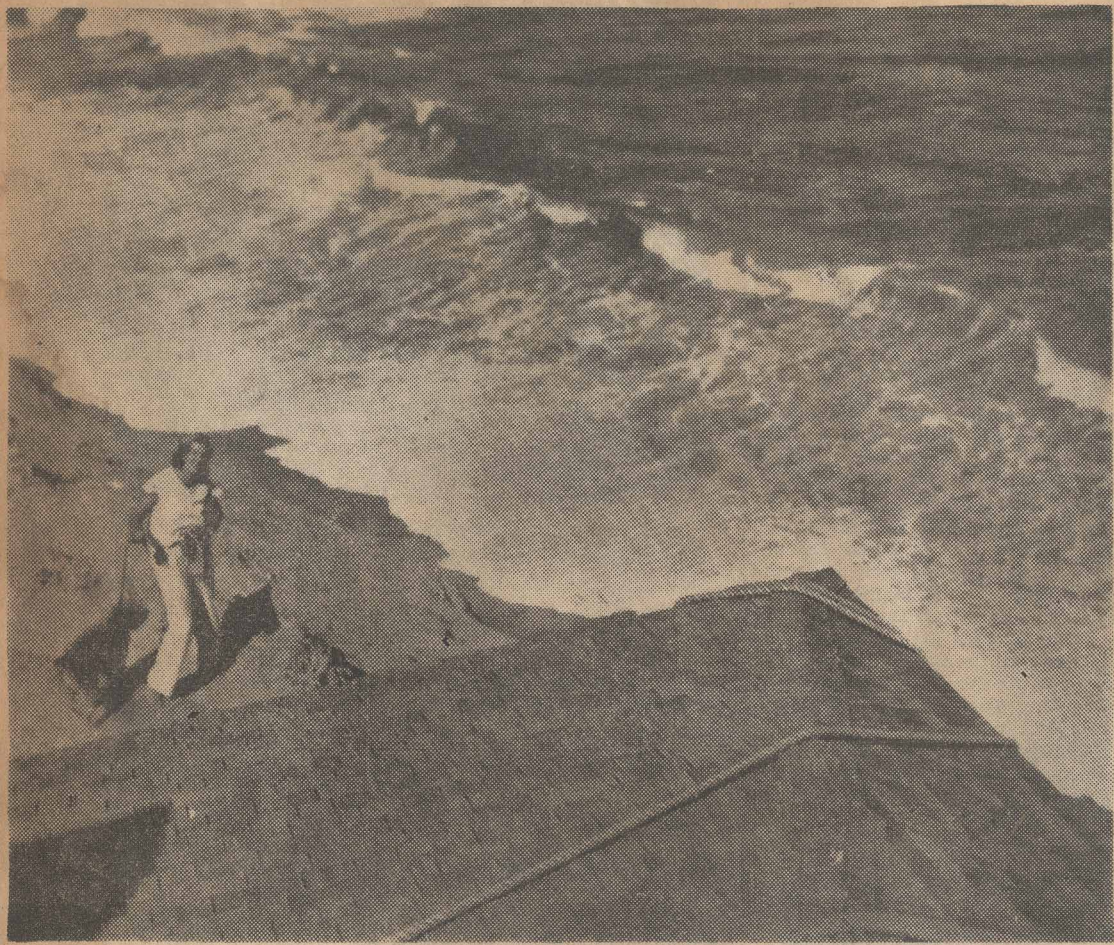


It's 100 Feet From Roof to Sea Below



FRIDAY, SEPT. 1, 1939 Cape Cod Standard-Times

Seas Recede, Leave Truro Home In Precarious Position on Bluff

TRURO, Sept. 1—Receding seas today left the home of Mrs. Katherine Gelofyen here still in a precarious position on a bluff at the head of Pamet, but the structure is in no immediate danger.

Coast Guards from the Highland Station were at the scene two hours early today, but the winds abated and the water did not reach the high levels of the previous 48 hours when nine feet of the bluff was washed away.

Also averted for the present is the possibility that the sea may break through a dangerously narrow section of the bluff near the Gelofyen residence. Had this occurred, Coast Guards said, the Atlantic Ocean and Pamet River would have joined, making an Island of the lower Cape.

This situation develops almost annually and is not considered as more serious now than upon several occasions in the past.

Yesterday, a number of guests at the Gelofyen cottage packed up

their belongings and left, but Mrs. Gelofyen still occupies the home, Coast Guards reported. The large hawser was secured around the building and tied to a sea anchor, and probably will prevent the structure from falling over the cliff, but the building must be moved before the next severe storm.



Pamet - About 1925

1873

Seventy-Five Years Ago

Travelling through Truro, a gentleman, noting the bareness of the country, asked a native, "What do you live on here?" "Live on?" replied the native, "why, we live on fish and strangers."

April 28, 1938

Wind Fans Smoke From Forest Fire

Carried Here From Raging Conflagration in Sandwich

All afternoon yesterday and into the evening a strong wind blew into Provincetown the smoke of the forest fire raging in Sandwich, far up the Cape and motorists returning here from a trip through that section reported the fierceness and the wide extent of the fire.

With the forest fire headed directly for Ballston Heights, Osborn Ball and Francis Joseph kept full pressure tanks up in case the stiff northwesterly wind carried the fire across Longnook road. **Truro**

Truro Will Open Pamet Channel

August 12, 1937

In an effort to save several thousands of dollars worth of clams at Truro, a narrow channel will be dug through the sand bar which now closes the mouth of Pamet harbor at Corn Hill, Truro selectmen have decided.

Action of wind and waves over a period of years has gradually thrown a bar of sand across the mouth of the harbor, preventing any tide water from ascending Pamet River at the usual entrance. The water, which has been coming up the creek through the new channel, forms a small bay over the harbor clam flats, which have been covered with a layer of mud washed back from the head of the river.

The ditch, which will probably be dug out with a tractor and scoop at the next lowest tide, is expected to carry away the sluggish water and mud which threatens to kill the clams. It will probably be up to scoop width at first, but it is hoped the action of the outgoing current will widen it and eventually wear away the bar.