

During the years the Mattakeesett drifted up to Wellfleet, off Gull Pond, and was buried in the sand until 1925, when this picture was taken.

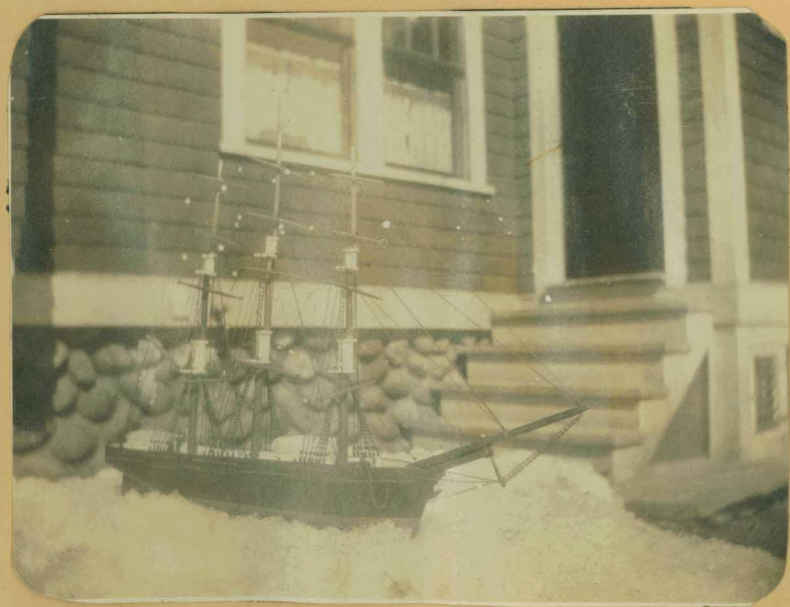


ANOTHER McMANUS DESIGN WAS THE 77-TON MATTAKEESETT which James & Tarr built in 1898. She was the first round bow Gloucester schooner. The Mattakeesett was lost on Peaked Hill Bar, Cape Cod in 1911.

Wrecked March 5, 1911. Capt. Ernest Parsons & Crew of 16 were saved. Was bound to Boston with logs. Built in Essex, Mass.



(Althea's father) cut a piece from her hull from which the square rigger in the picture below was made- 1925



The ship model with its hull cut from the wreck of the Mattakeesett - 1926



Althea's father with his ship model- 1926
Caesar is the dog.
Picture: Auburn, Mass.