

This is the first time since 1918 the Harbor has been as ice-filled as this. Note postcard views of the 1918 bergs a few pages ahead.

537

-- February 1948 --

Vast Provincetown Ice Floe Menaces Piers and Homes

The Standard-Times Cape Cod Bureau

PROVINCETOWN, Feb. 17—A vast ice field hovered off Provincetown today menacing piers, fishing boats and Summer beachfront homes. Stretching for approximately 10 miles south of here, the ice floe remained more than 500 feet off Town Pier early today during the ebbing tide. William Costa, watchman on the long Cape Cod Fisheries pier, said the 5-mile-wide floe had not gathered around any of the town piers and no damage has been suffered.

Soaring temperatures and high winds Saturday split the ice and sent it floating shoreward. It was estimated \$1,000,000 worth of waterfront establishments are threatened by the ice, which is piled up in chunks 4 and 5 feet high.

"Unless the southwest wind breezes up a good deal more there will not be any danger to the piers," Mr. Costa said. "Low water is expected about 9:30 and then the tide will come in again. If the wind increases at the same time we might have trouble."

"However, up to this morning," he continued, "no ice has come against the piers and no damage has been done."

Mr. Costa added that a fishing boat made her way through the ice early today to reach the pier undamaged.

The Weather Bureau in Boston forecast diminishing winds and temperatures as high as 50 degrees.

Propelled Toward Shore

Ice had formed over the shoal waters along the inner arm of Cape Cod during the past week's near-zero temperatures. It was propelled toward the shore yesterday by a 12-mile-an-hour wind.

"The ice leveled off a lot on the trip across the bay," Mr. Costa said. "It sure looked bad out in the bay off Dennis and Brewster yesterday but we got a lucky break in the weather. The outgoing tide early this morning helped a lot."

Ice has already hit the beach in some isolated sections of the Lower Cape, causing no damage.

Last Saturday the same ice field crushed a North Truro cold storage plant pier causing an estimated \$10,000 damage. Several small boats were pushed onto the beach.

Ice Pack Peril Grows on Cape

Huge Field Threatens Mighty Smash at Shore

The Standard-Times Cape Cod Bureau

PROVINCETOWN, Feb. 18 —

Terrifying threat of a gigantic shore smash by the huge ice pack hovering off Cape Cod increased here today.

Only 500 yards off Provincetown, the immense field, measur-

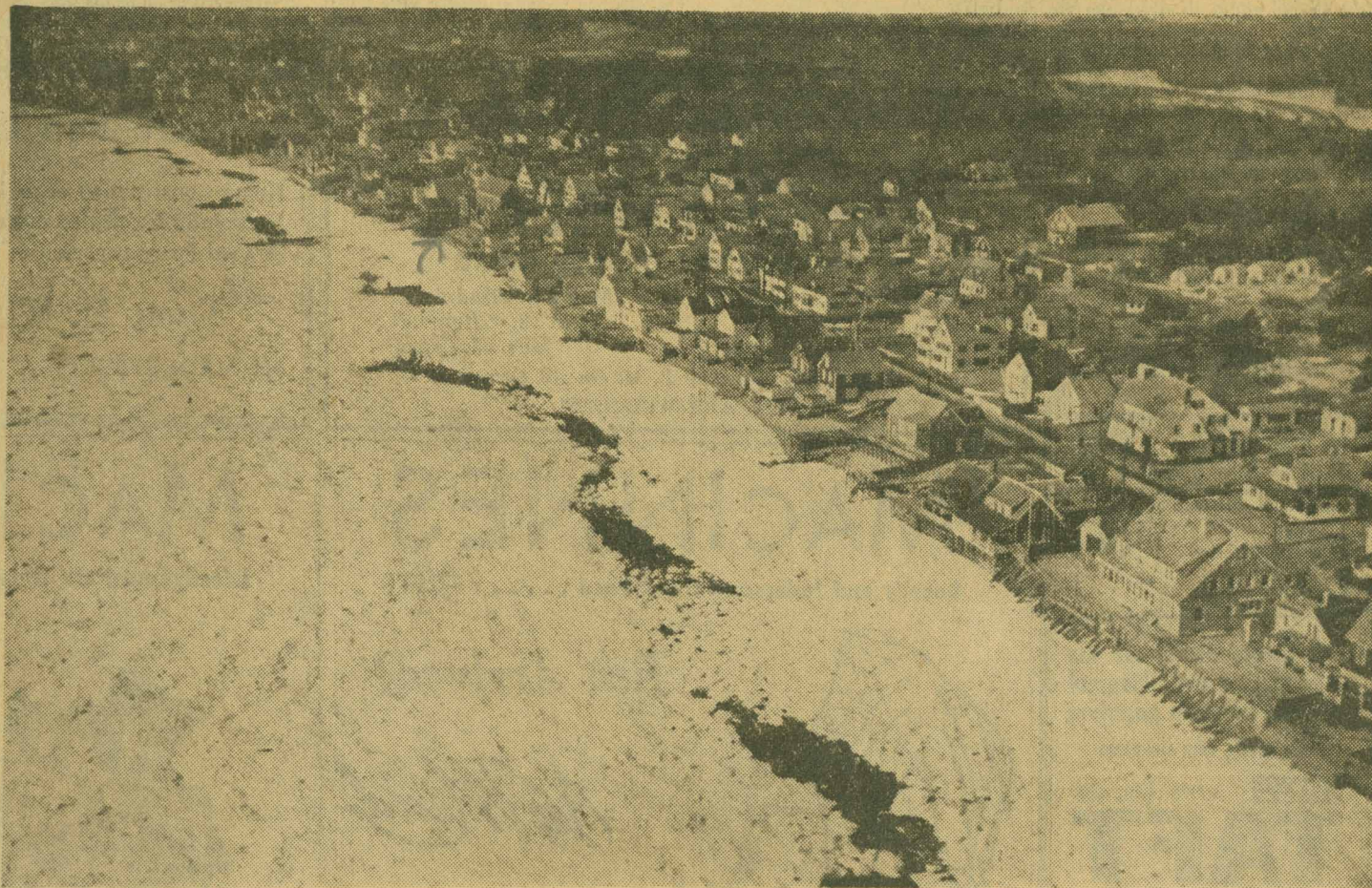
ing 4 by 30 miles and piled 4 and 5 feet high in some spots, threatens \$1,000,000 damage to piers, fishing vessels and beachfront homes.

Shrouded by fog yesterday, the ice field was seen clearly today. A long finger of ice ominously points directly at the west shore harbor property.

Fleet Flees Danger

The Provincetown fleet left the channel today to head for the fishing grounds. The vessels grabbed the chance to get out of the harbor through the narrow strip left open, fearing the ice might suddenly begin to close in on them and crush the entire fleet.

From Wellfleet to Provincetown, the ice field remains a menace with no signs of abatement.



ICE JAM AT PROVINCETOWN

Air view yesterday of the vast ice jam at Provincetown, which threatened damage to fishing vessels and wharfs of the village at the tip of Cape Cod. This view was made from a Coast Guard PBV plane. (Associated Press Photo)

Allerton Street, first right. Arrow: John Francis' "White House", with Nell Lewis, Charlie Mayo, and Bill Mayo's in back of it.