

Monument to The Pilgrim Fathers, Provincetown, Cape Cod, Mass.

Copyright 1910 by the Pictorial News Co., N. Y.

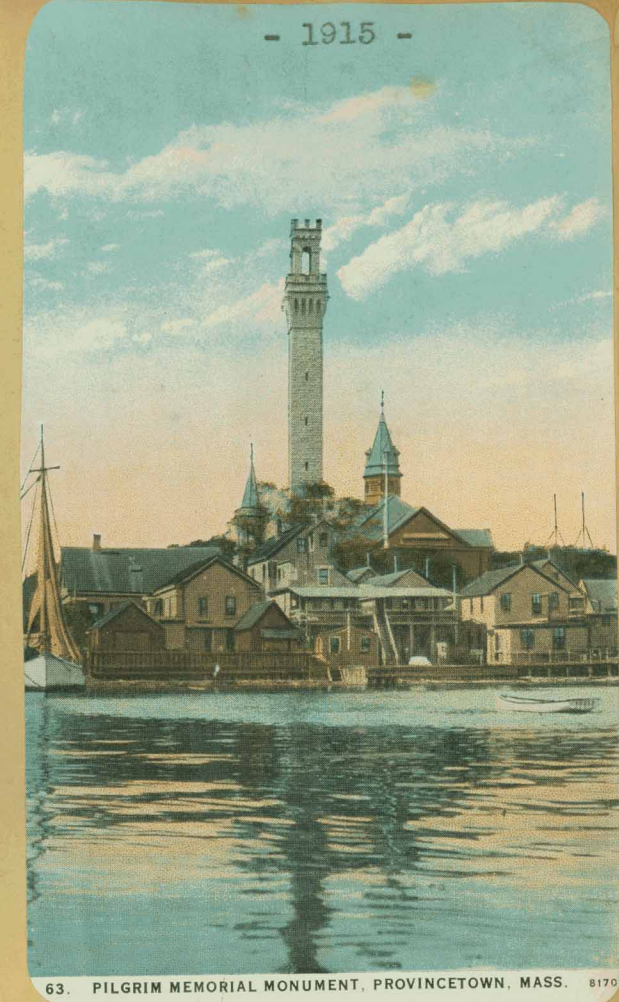


1552

- 1915 -

TO THE PILGRIM MONUMENT
AT PROVINCETOWN

Straight toward Heaven it points
Like a finger.
Alone upon a hill but majestic.
" 'Tis barren" do I hear you say?
Nay, beneath the shadow of that
hill
First trod they their adopted
strand.
And in that harbor, formed
A nation.
O! pile of granite,
For what principles you stand!
God grant we ne'er forget but
rather
Keep them.
Point then—and let us follow.
Dean S. Sears in Provincetown
Advocate.



- The Lodge -

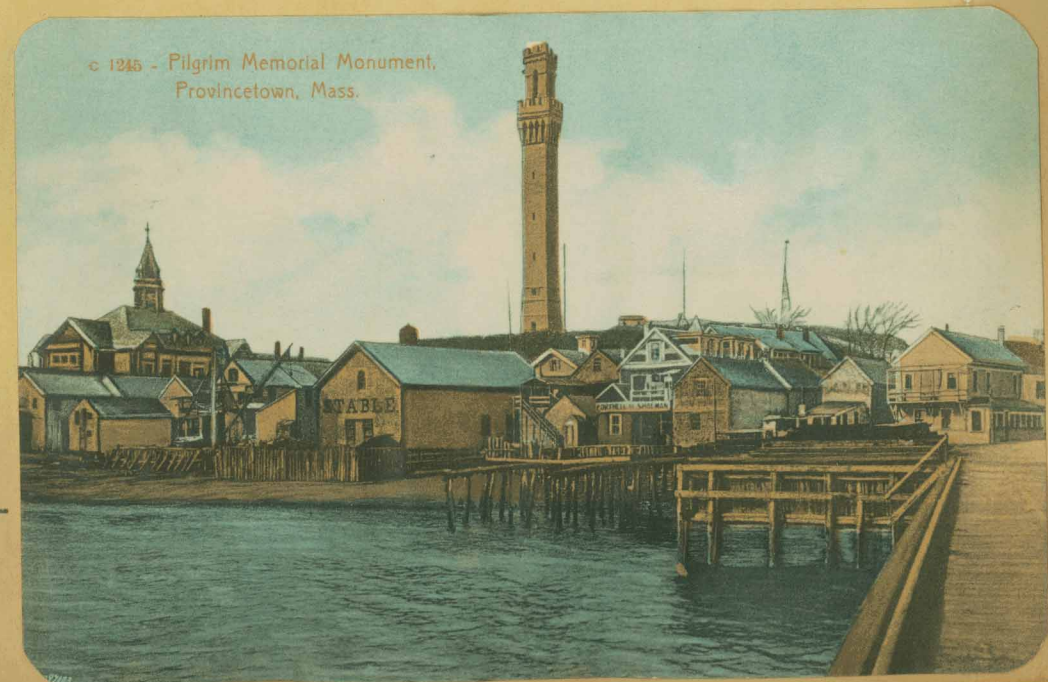
(1910)

In the autumn following the dedication of the monument plans were drawn for a lodge, to be erected on the hill in the vicinity of the structure. The Pilgrim Club of Brewster disbanded and their collection of antiquities was presented to the Monument Association.

It was necessary that some place should be provided in which to house these articles, and a room for meetings of the directors was much needed. Therefore, plans were drawn and the Lodge was completed in the month of December 1910.

It is colonial in design, built wholly of concrete to the plates, the gables being of wood, unpainted which soon assumes a tone of silvery gray in the strong salt air of Cape Cod. The windows are colonial with diamond-shaped window panes, and a heavy chimney built against the western wall adds greatly to the beauty of the structure. The building is in dimensions about 20' x 25'. A broad fireplace gives an ornamental finish to the whole and completes the colonial effect.

You will notice from the picture on the preceding page that this building is not quite completed.



The steel framework standing on the hill, near the Monument, is one of the storm-signal towers maintained by the United States Weather Bureau. Flags by day and lanterns by night warn mariners of "weather of marked violence."