

# Easter Morning Service Opens New Methodist Church



Photo by Dan Bernstein

This impressive photograph was taken toward the rear, showing the large hand-hewn cross which hangs above the entrance door. Shown also are the steep struts which support the roof.

## Easter Service Opens New Methodist Church

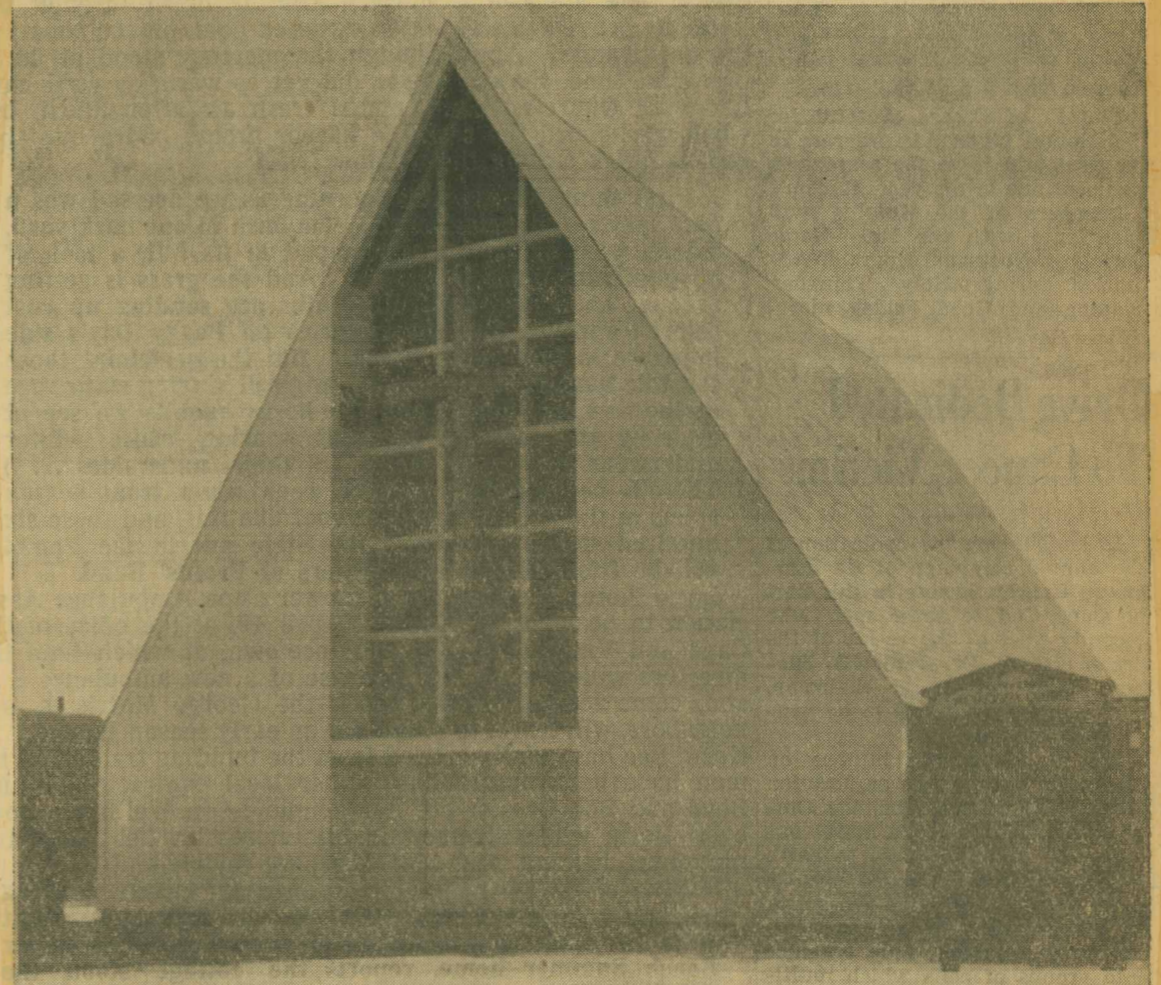


Photo by John D. Bell

Easter Sunday will be the first time the new Provincetown Methodist Church nave will be used. Last minute details are being worked out for the opening of the new church to worship. Services will be held at the 11 a.m. hour preceded by fifteen minutes of organ meditations. For the first time in over two years the chimes again will be used. Both the Junior and Adult Choirs will be furnishing the music for the special morning service. From Easter Sunday on both choirs will be singing each week. Reception of new members will feature the opening service in the new church. Persons interested in joining the church at this service should contact the church office. Included in the service will be parts of the ritual of the church pertaining to the opening of a church for worship. Expected to arrive for the church's opening is a new carpet runner for the center aisle of the church leading to the altar. This carpet runner has been given by the Woman's Society of Christian Service. A large congregation is expected to participate in this historic event.

### Throngs Crowd New Methodist Church For Opening Here On Easter Morning

Easter Sunday, 1960, may well be a day which will be long remembered by members and friends of the Provincetown Methodist Church, as over 300 of them crowded into the newly completed church nave for the first time to participate in ceremonies offi-

cially declaring the church open for worship. It was standing room only as the impressive 11 o'clock ceremonies began with the traditional long processional for bringing the chancel furnishings.

Entering to the strains of "Christ the Lord Is Risen Today" the forty in the procession were led by David Gonsalves carrying the cross, Donald Stark and Christopher Silva carrying the American and Christian flags, Francis Baker and John Crave, candlebearers, and Thomas Fisk carrying the Bible. District Superintendent J. Manley Shaw, visiting for the ceremonies, was followed by the Junior and Adult choirs respec-

tively, and the pastor, Rev. Gilman L. Lane. The chancel was decorated with lilies and tulips and other flowers.

The anthem "Lilies" was sung by the Junior Choir under the direction of Mrs. Mildred Felton, and the Adult Choir under the direction of Mrs. Isabelle Benson, rendered as their anthem "The Legend of the Garden" and "As It Began To Dawn" during the of-

factory.

Rev. Shaw then officially declared the church open for worship saying he was proud to participate in this event, and also commenting "the town has a right to

factory.

Rev. Shaw then officially declared the church open for worship saying he was proud to participate in this event, and also commenting "the town has a right to