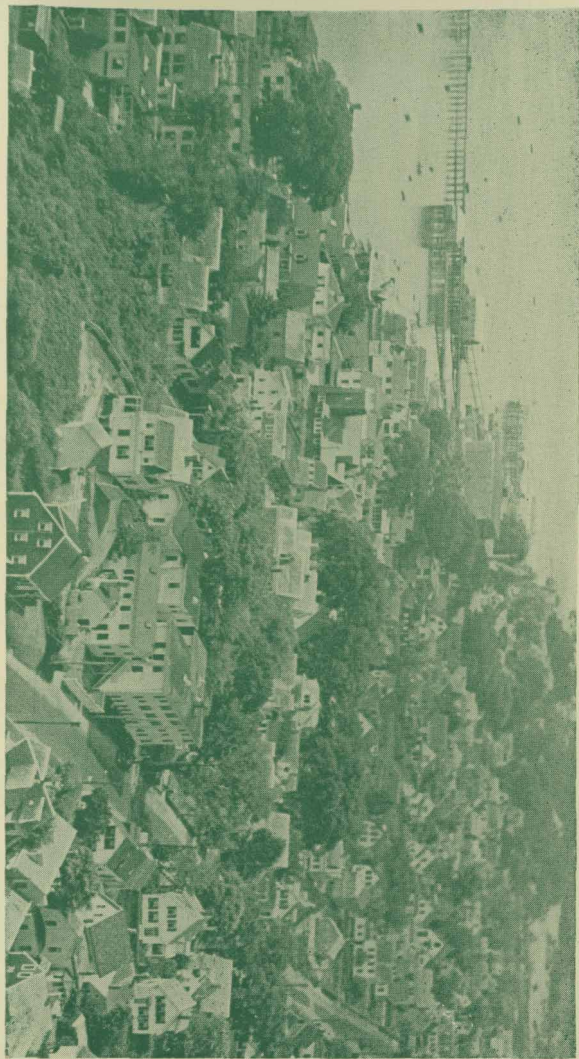


The Gifford House
Provincetown
Massachusetts

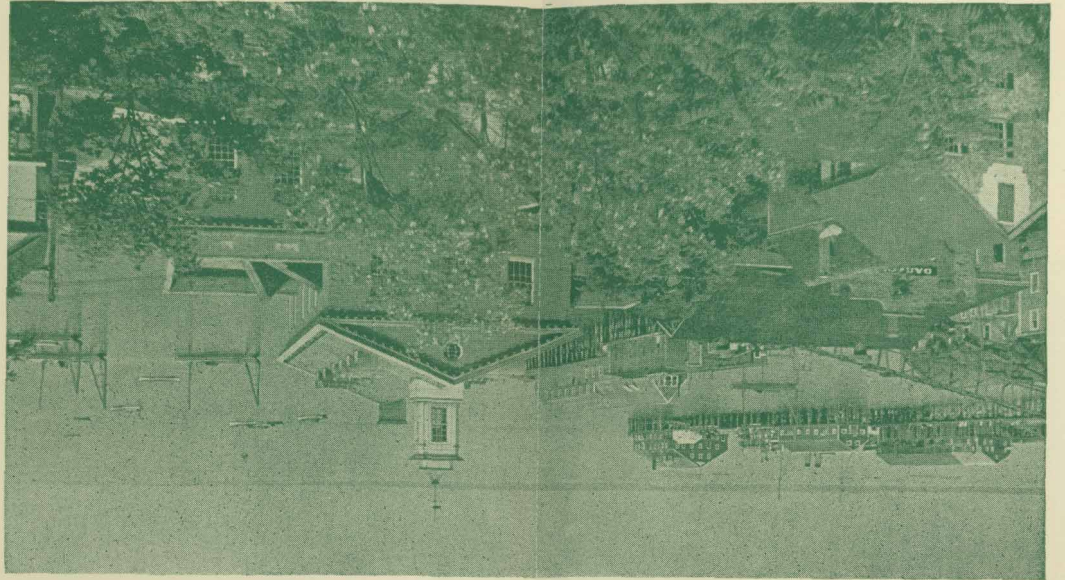
- 1930 -

From the Pilgrim Monument showing Gifford House in foreground



Provincetown, the eastern terminus of U. S. Highway 6, is approximately 300 miles from New York, 120 miles from Boston, and 110 miles from Providence. Perfect roads winding through quaint and interesting towns, attract many motorists. Cape Cod extends from the Cape Cod Canal a distance of fifty miles out to sea, terminating at Provincetown. There are several Cape Cod trains daily from the South Station, Boston, and The Grand Central Terminal, New York, with bus connection at Yarmouth for Provincetown. It is a pleasant four hour trip from Boston to Provincetown by boat, leaving Boston at 9.30 A.M.

View of harbor from Gifford House out-look



The Gifford House

The Gifford House is situated on a hill, in a quiet attractive section of the town; yet it is only a block from the water front and the shops along the main street.

It is within easy walking distance of churches, movies, wharves, boat landing.

The hotel's large lobby, recreation room, and extensive verandas are always cool. So is the dining room. The hotel look-out with two landings, offers a view of the town and harbor.

Gifford House meals have had the cordial approval of thousands of guests during the 45 years the hotel has been under the present management. Sea food, a specialty.

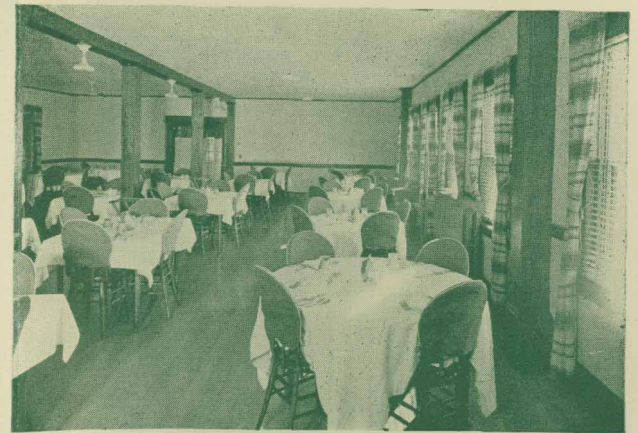
Rooms with or without baths; all with running water.

We believe you will find comfort and satisfaction in the home-like atmosphere of the Gifford House.

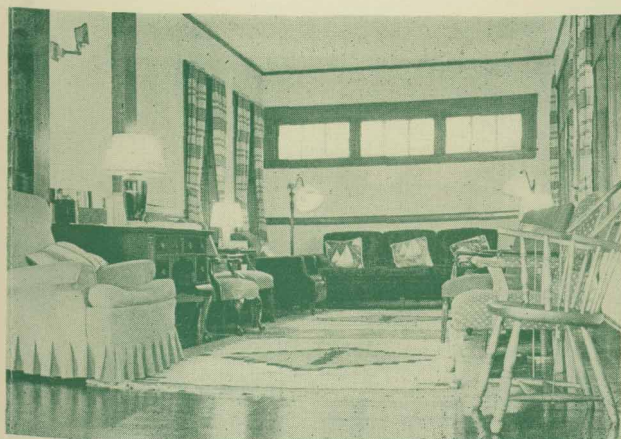
George A. and D. C. Merrill



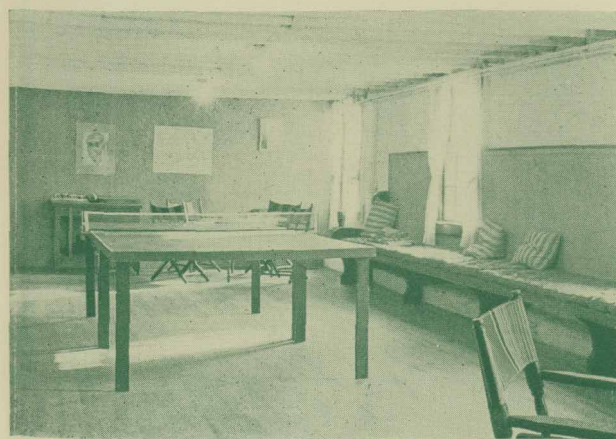
View of the Hotel



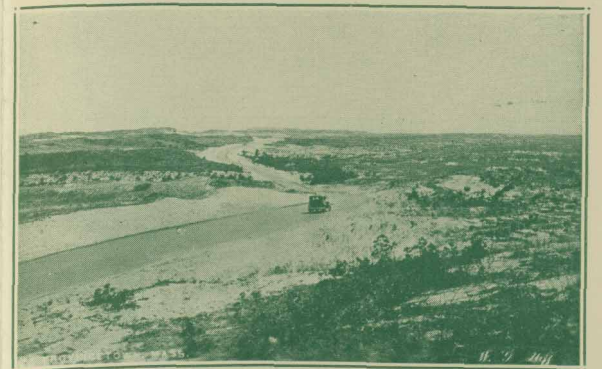
Dining room



Corner of the lobby



Recreation room



View of Ocean Highway to Race Point