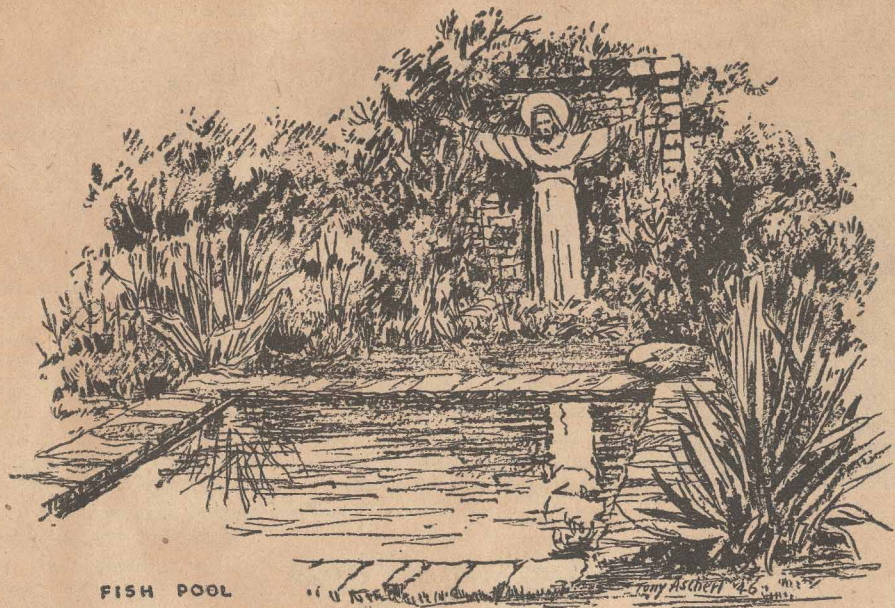


002-121

In Garden of Church of St. Mary of the Harbor



FISH POOL

The reflection pool with its bright-colored gold fish delights every visitor, particularly the little people, to the churchyard of St. Mary of the Harbor (Episcopal) at the foot of Anthony Street on the bay side of Commercial Street in the east end of town. The general design for the pool and sculpture-embedded brick wall was made by the late Frederick Waugh, N.A. The spouting whale of lead was molded and cast by William Boogar, Jr. The statue "Christ, the Gardener" was created and cast in concrete by Robert W. Nicholson.



The Wooden Cross Commemorating the Loss of the Submarine S-4 off Wood End, December 17, 1927. (see pictures in Wood End section). Taken July 1941

"ST. MARY'S OF THE HARBOR" EPISCOPAL CHURCH, PROVINCETOWN, MASS.



ST. MARY'S OF THE HARBOR (EPISCOPAL)
Provincetown, Cape Cod, Mass.
(The outermost Shrine of the American Church)
Eastward view looking toward the High Altar. Pulpit
Crucifix carved in Oberammergau by Anton Lang. Rood
figures by Arnold Geissbuhler. 1955