

1363

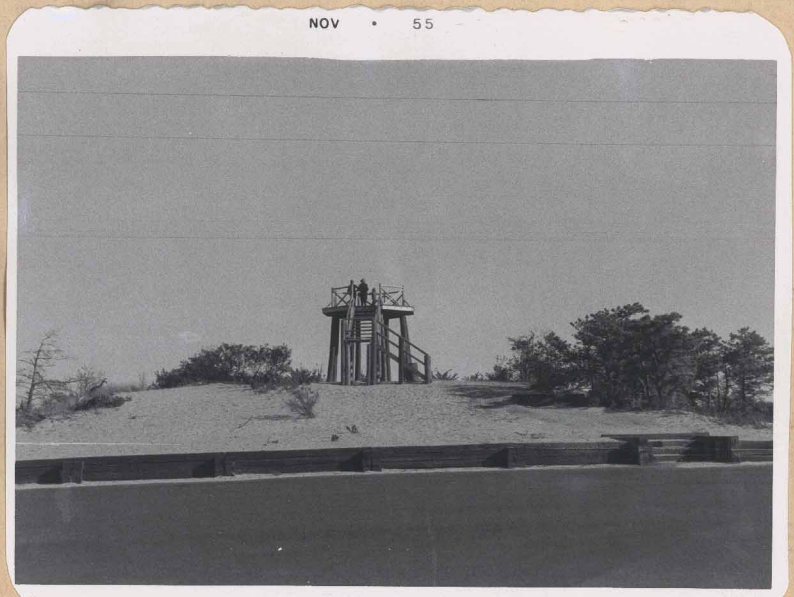


Another view of the Race Point Coast Guard Station from Sunset Hill. Taken by Althea, September 1945.



Only change in Sept. 1953 is Airport, left

*airport - there is
a way back
see page ahead*



YOUR WEEKLY GUIDE TO CAPE COD - 1955

**A Grand View
In Store for You**

THE newly erected observation tower, constructed by the Commonwealth's Department of Public Works, stands atop a high dune, at Provincetown. The dune is known to many as "Grand View," a name well justified by

the site. The tower stands at the intersection of New Beach Highway and Conwell Street extension highway. The spot commands one of the finest views of the dune country, the tip of Cape Cod, and the surrounding expanses of water to be found anywhere along the coast. Be sure to visit this observation tower and feast your eyes on the magnificent views from it.