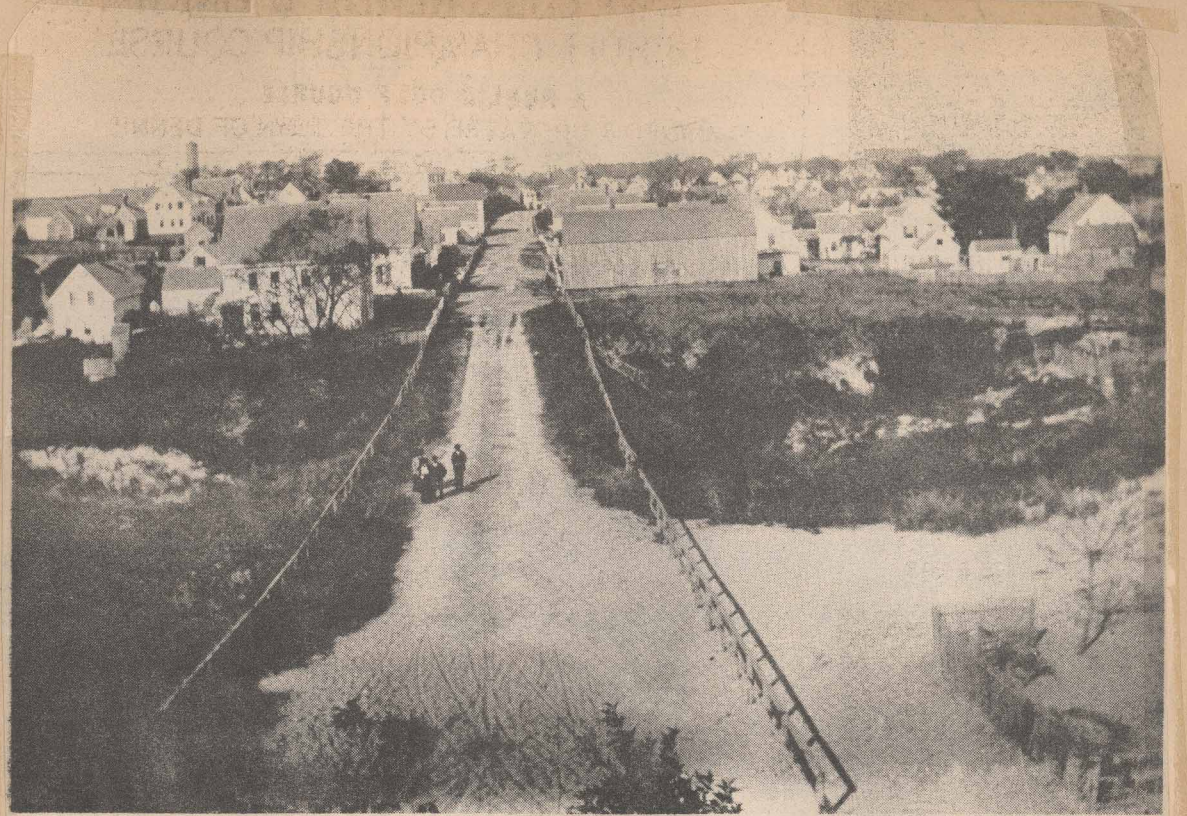




Here are our new type "Motels"  
 Corner of West Vine and  
 Bradford Streets.  
 Facing West - September 1953



Same scene as photograph below, about 1890.  
 From: Yarmouth Register - June 27, 1968



W. M. SMITH, PHOTO. \* PROVINCE TOWN. 50¢

.... Bradford Street, facing East, from WestVine Street - 1880  
 The Western Schoolhouse (cupola) is on the extreme right.  
 Next is the Centenary Church with the Center Methodist  
 Steeple directly behind the roof, and the Universalist  
 Church in the center.  
 Nickerson Street is on other side of long barn in center,  
 on right side of Bradford Street.  
 Town Hill in the background.

(see next page .....)