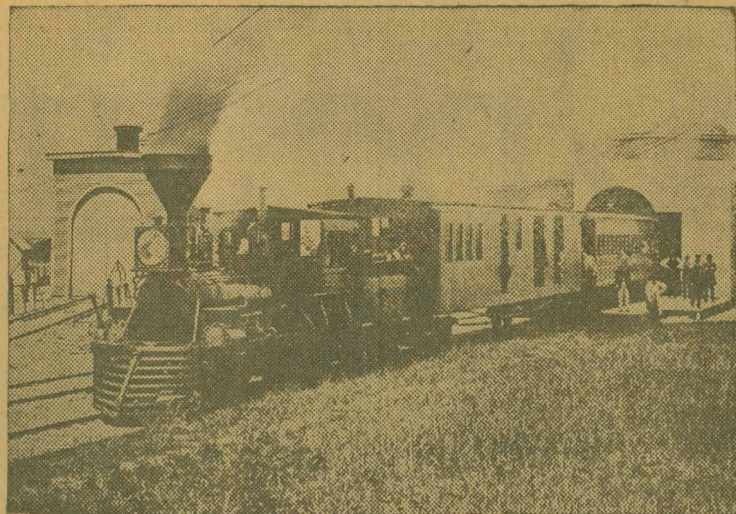


When First Train Reached Cape



When the Old Colony Railroad reached Orleans in 1863, the railroad station boasted a porte-cochere, and the roundhouse, at left, was equipped with a turn table 'n' everythin', Orleans was the terminus in those days. The rails didn't reach Provincetown until ten years later. Charles E. Small, who died in Waltham in 1931, at the age of 96, was engineer of the train shown here and is probably the man standing by the engine. He was the brother-in-law of Mrs. Emma Percival of East Orleans. Whether or not the smoke from the ancient engine comes from pitch pine or cannell coal is a matter of opinion. Inspection of the tender fails to answer the question.

Provincetown Depot, The Tip End of Cape Cod, PROVINCETOWN, Mass.

1908



--- 1890 ---

May 1899

Depot To Be Improved

The visit to this town of the Railroad officials Friday of last week is to result in a marked improvement to their property. The depot is to be much altered and more convenient facilities provided. Travelers will be enabled to consult the ticket and telegraph offices from the outside of a large window which according to the architect's plans,

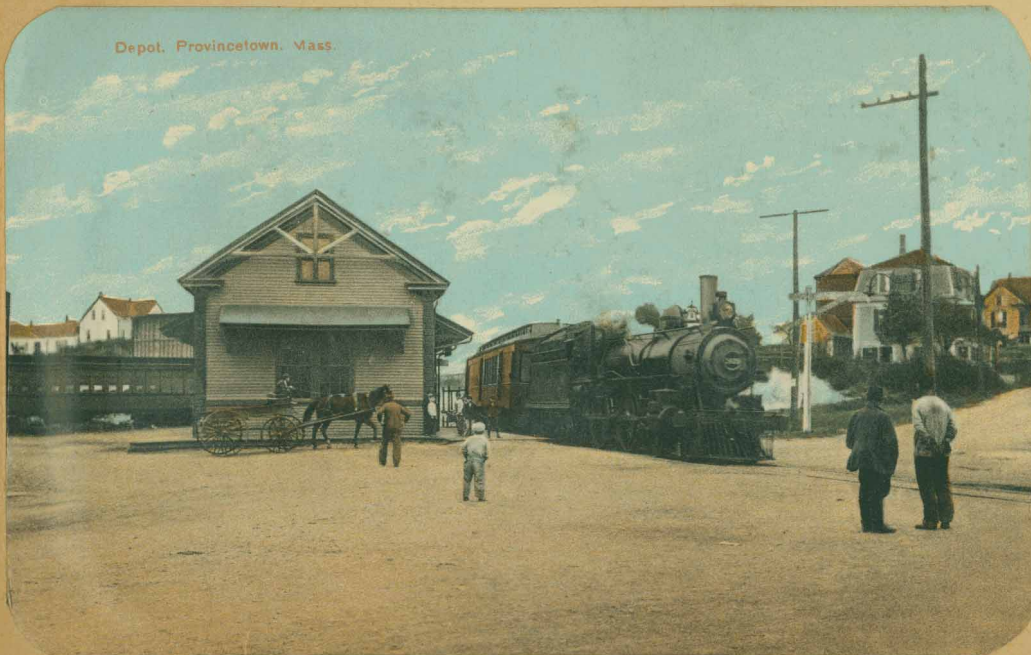
will be placed where the main entrance now stands.

Modern heating and lighting will be used. A covered way leads direct from the cars thus protecting passengers from exposure to the weather.

It is authentically stated that a boat will be in service between this port and Boston in connection with the road.

In January 1910, fifty years ago, a very severe storm accompanied by the highest tides of record prevailed over the Cape. The tides were so high that they swept across the road at the bridge between John Busley's and Benjamin Blossom's in West Barnstable. During the storm the railroad was so washed out that Provincetown was without train service for nearly a week. —Dennis-Yarmouth Register.

Depot, Provincetown, Mass.



Here she is just pulling in. - 1890

Railroad Station and Pilgrims Memorial Monument, Provincetown, Mass.



-- 1911 --

Note no Railway Express building in foreground (see next page. Center School, corner Alden Street, left.