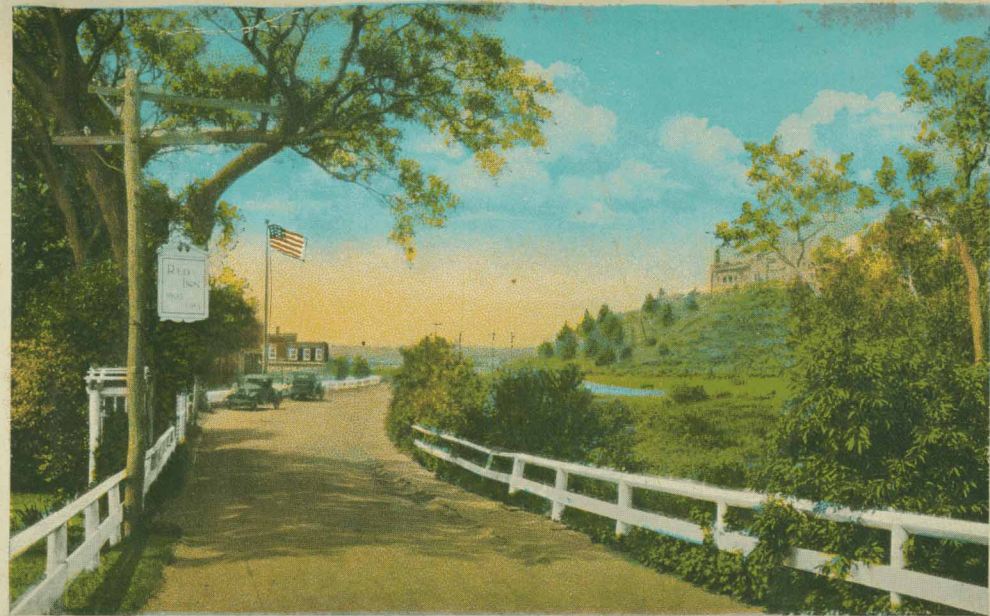




WAY UP ALONG, WEST END, PROVINCETOWN, MASS.

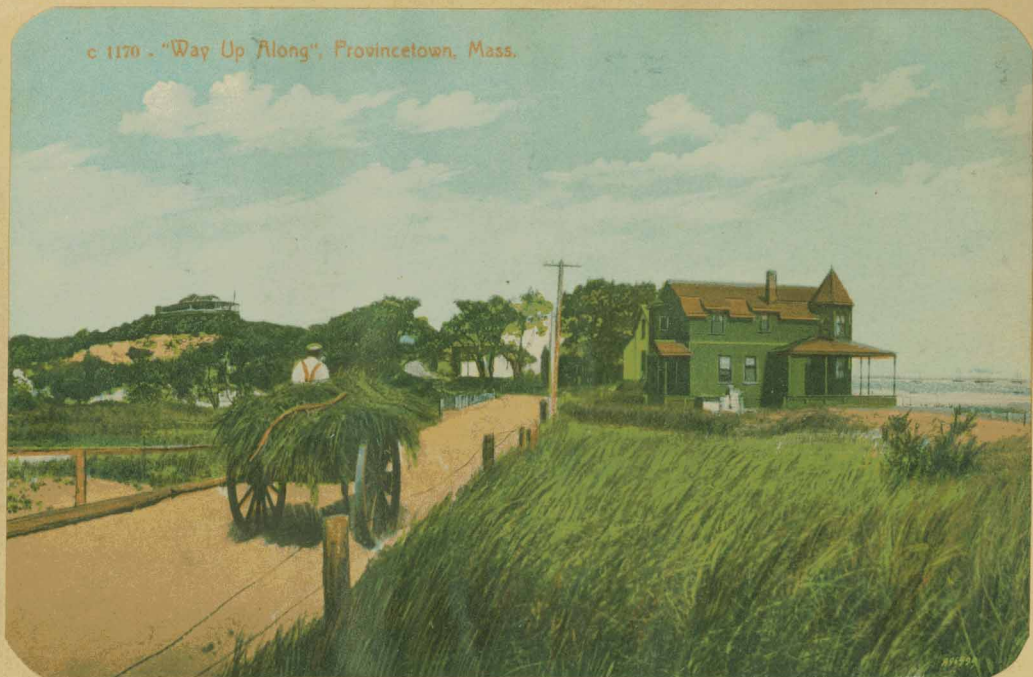
Facing West from Red Inn. - 1911 - West End Breakwater ahead, before Provincetown Inn was built. (See picture on right) The Castle, right.



"WAY UP ALONG" WEST END, PROVINCETOWN, MASS.

108024

Same scene about 1915. Note Provincetown Inn now beyond the Sandhurst Cottage flag. Land on the right has many houses on it now.



c 1170 - "Way Up Along", Provincetown, Mass.

Facing east. Sandhurst Cottage, right. - 1909
Tip cart with salt hay.



The Beach and Sandhurst Cottage, West End, Provincetown, Mass.

About 1911 --- Pilgrim Monument on the right.