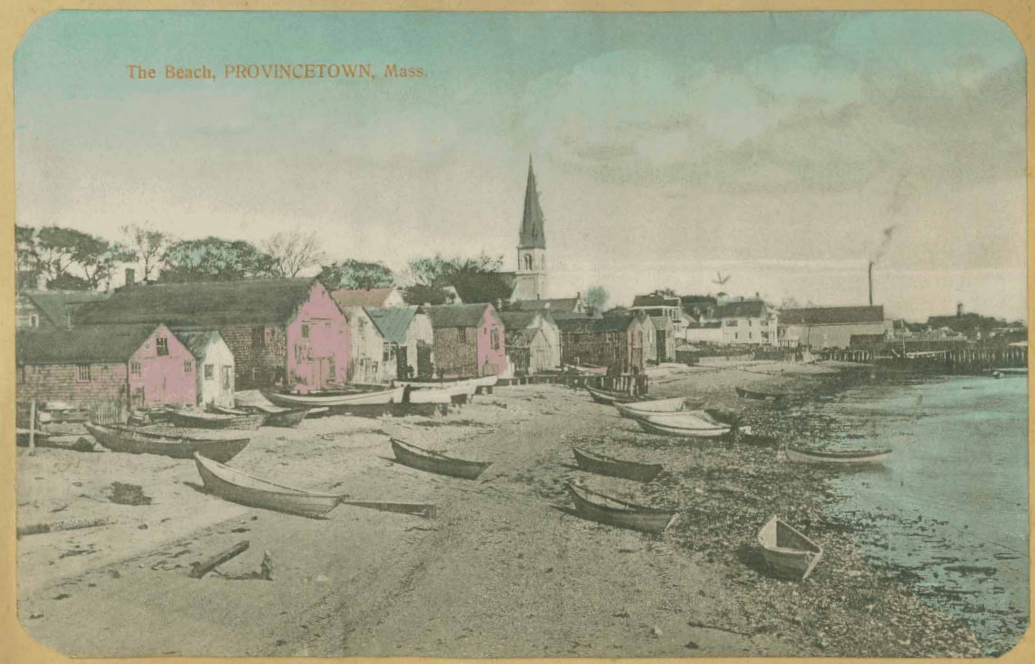


Central Wharf building, opposite Central Street. -- About 1890.



Old Central Wharf, Provincetown, Mass.

About 1880. Ezra Ewell, Ship carpenter and Spar maker; F.A.Paine, Sail and Tent Maker; and Wm. H. Herbolt, Blacksmith were located on this wharf. The little building at the right is a coal shed.



The Beach, PROVINCETOWN, Mass.

Facing East, 1890. Centenary Church Steeple Dyer's Store, arrow. Matheson's Wharf, and the Unitarian Church, right.