



FISHING DORIES ON BEACH

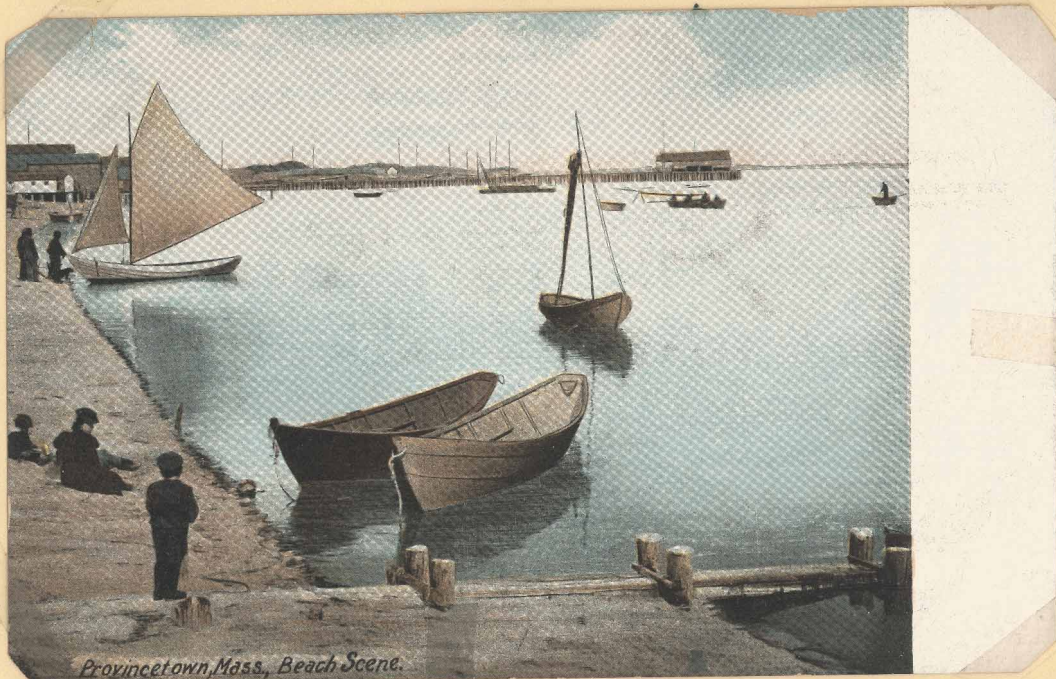
Behind the New Post Office - 1910



FISHERMEN'S BEACH, PROVINCETOWN, MASS.

- 1912 -

Center Methodist Church can be seen in background, both cards  
Also Railroad Wharf.



Same location as above - 1906



Center Methodist Church Steeple in background.  
- 1912 -