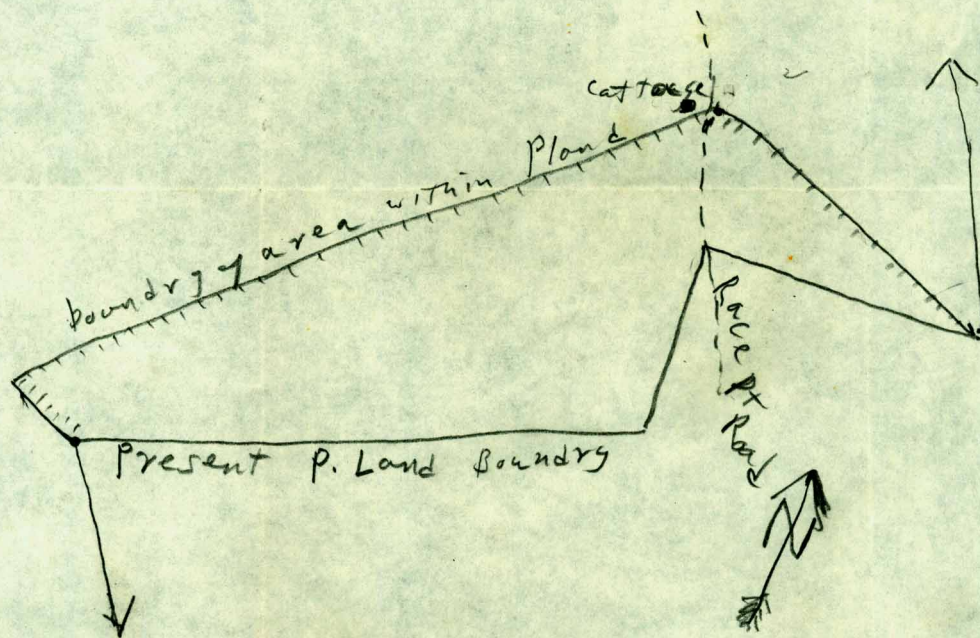


Boundaries of the portion of the Provincelands to be excluded from the National Sea Shore, as given me by Miriam DeWitte:

From the most Easterly point of the present boundary of the Provincelands, (just to the North of Route 6,) Follow the present boundary in a saw toothed westerly direction to a point in Clapps Pond where the Provincelands Boundary turns in a Southeasterly direction. From this point 1,000 ft. due west. Thence in a Northeasterly direction to a cottage now occupied by the State Care taker of the Provinceland, which is at a point on Race Point Road approx 1600 ft from where said road enters the Provincelands. Thence Southeasterly to start.

On the Provincetown Quadrangle Map issued by the US Geological Survey, which you saw here, the shape and area of the land described above is aprox below



Though we will go ahead here as planned, if the above is to be rammed down our throats, as it were, (and as Miriam implies,) it might be well to bank fires here and be ready to open up on the legislative end of things.

Will keep in touch

best

*Wentson*