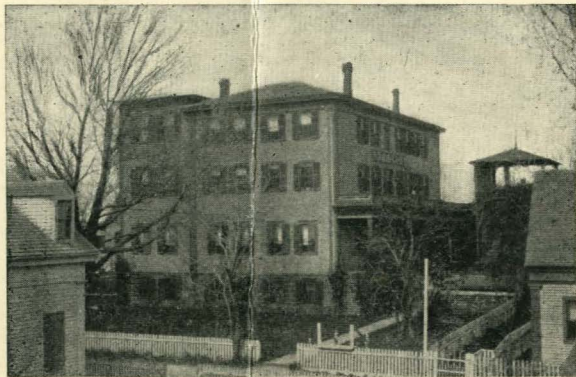


GIFFORD HOUSE,

PROVINCETOWN, MASS.



GEORGE A. MERRILL, PROP'R.



Gifford House, Provincetown, Mass. Geo. A. Merrill, Prop'r.

Gifford House, Provincetown, Mass.

As a summer resort Provincetown possesses such a combination of attractions as are seldom found united in any one place. Its location on a narrow neck of land where it is constantly swept by sea breezes insures a cool and comfortable atmosphere where sultry nights are unknown and sleep is always possible. At the same time there is no danger of stagnation and every moment of the day may be pleasantly employed.

Provincetown has a population of nearly 5000 people. Vessels of every sort mostly those engaged in the coast wise trade and the fisheries lie at anchor at all times in her beautiful and commodious harbor. Stores of every kind, where almost every want may be gratified, line the main street of the town which extends along the water front for a distance of three



Harbor View from Gifford House.

miles. The coming and going of the excursion steamer which plies between this port and the city of Boston each day keeps the place in touch with the outer world and serves to break what might otherwise be the monotony of life in a somewhat secluded place at the seashore. Provincetown may also be reached by the Old Colony Division of the N. Y., N. H. & H. R. R., arriving in Boston at the South Terminal Station. This road runs two trains daily to Provincetown.

The visitor to Provincetown will find interesting drives in various directions. The lighthouses and life saving stations which abound along the coast are visited by large numbers of people during the season. The celebrated Highland Light at North Truro which has no superior in brilliancy and penetrating power among those along the coast is an object of great interest to visitors and lies only a few miles distant from this place. Fishing parties are made up every day and are conducted to the fishing grounds by experienced yachtsmen. Parties who prefer sailing can also be accommodated



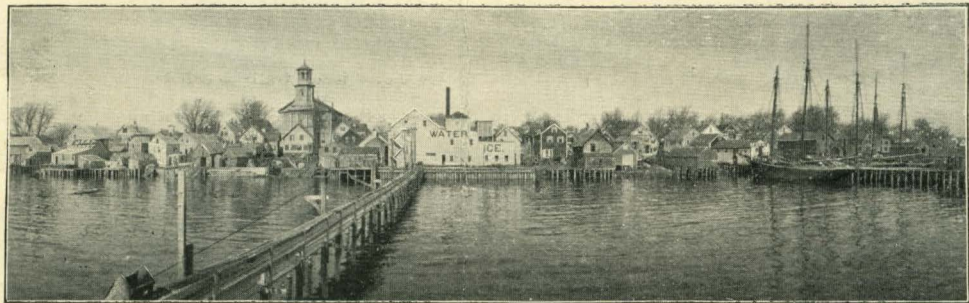
Shore Scene.

and the prices are always moderate. Bathing facilities are abundant, and one can have his choice between the quiet waters of the harbor and the surf upon the ocean side of the Cape two miles distant from the town.

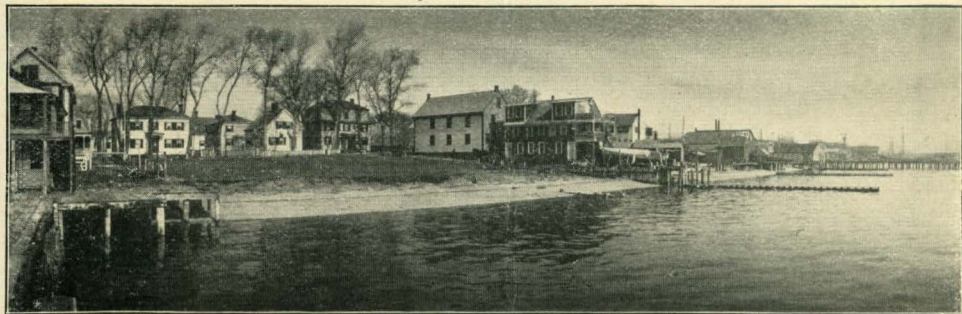
The Gifford House, a long established and leading hotel is centrally located on high ground overlooking the harbor. Sanitary plumbing makes the drainage of the best and the drinking water is always pure. The house is lighted by electricity and furnished with telephone. A good lawn offers facilities for croquet, etc., while an amusement room furnishes opportunities for indoor games. The proprietor intends that the table and service shall be first class and in addition to the best the market affords the great variety of fish is a special feature.

For terms and other information, address

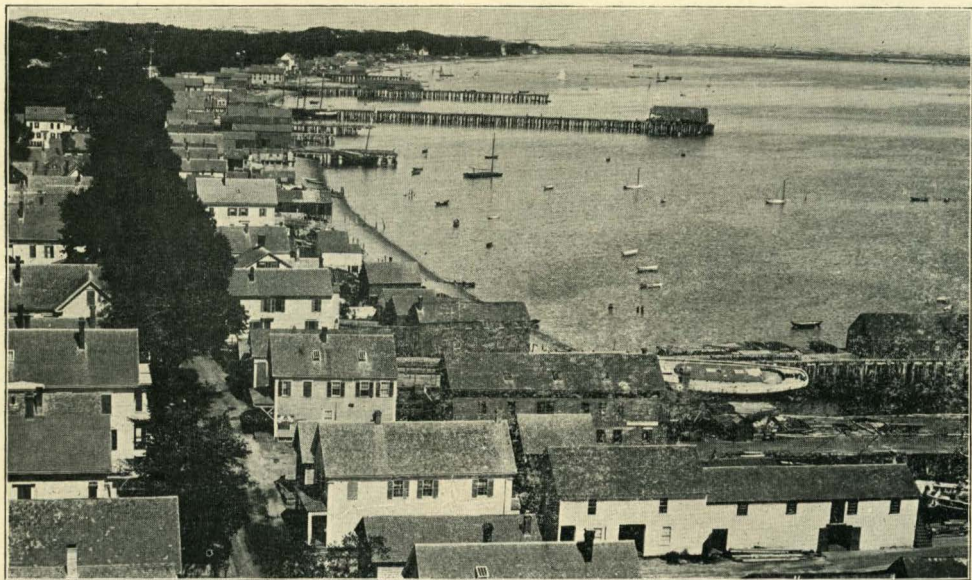
GEORGE A. MERRILL,
Provincetown, Mass.



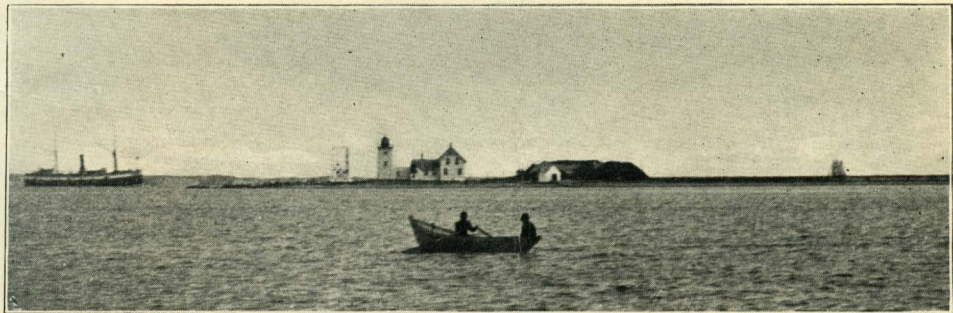
Water Front.



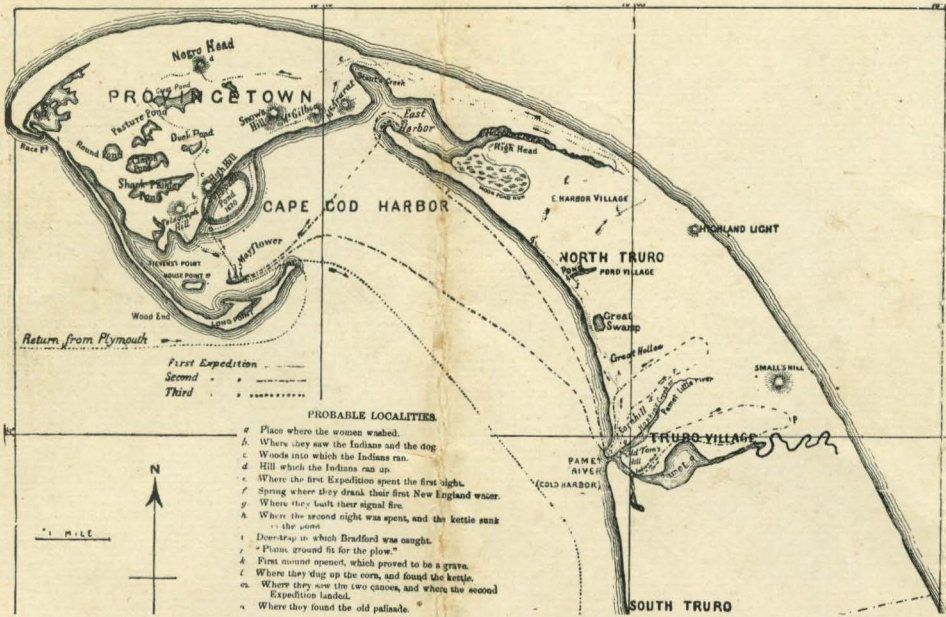
Water Front, East End.



Looking East from Center M. E. Church.



Long Point, Provincetown, the Tip End of Cape Cod.



Return from Plymouth

First Expedition - - - - -
 Second - - - - -
 Third - - - - -

PROBABLE LOCALITIES

- a Place where the women washed.
- b Where they saw the Indians and the dog
- c Woods into which the Indians ran.
- d Hill which the Indians ran up.
- e Where the first Expedition spent the first night.
- f Spring where they drank their first New England water.
- g Where they built their signal fire.
- A Where the second night was spent, and the kettle sunk in the pond.
- i Deer-trap in which Bradford was caught.
- j "Plains ground fit for the plow."
- k First mound opened, which proved to be a grave.
- l Where they dug up the corn, and found the kettle.
- m Where they saw the two canoes, and where the second Expedition landed.
- n Where they found the old palisade.