



In the Path of the Moon

by George Elmer Browne, N.A.

THE BROWNE ART CLASS

PROVINCETOWN
MASSACHUSETTS

Instructor

George Elmer Browne, N.A.

SPECIAL CLASS IN PICTORIAL ILLUSTRATION

By MEAD SCHAEFFER

GEORGE ELMER BROWNE, N.A.

MR. BROWNE'S WORK is to be found in the permanent collections of The National Gallery at Washington, D. C.; The Chicago Art Institute and The Union League Club, Chicago; The Luxembourg Galleries, Paris; The Montpellier Museum, Montpellier, France; The Montclair Museum of Art, Montclair, N. J.; The Toledo Museum of Art, Toledo, Ohio; The Art Association and The University Club, Milwaukee, Wis.; The Erie Art Club, Erie, Pa.; The Los Angeles Art Museum, Los Angeles, Cal.; The Omaha Public Library, Omaha, Neb.; The Atlanta Museum, Atlanta, Ga.; The New York Public Library, The National Arts Club, The Salamagundi Club and the Lotos Club of New York City. His painting, "Bait Sellers of Cape Cod," was purchased from the Paris Salon of 1904 by the French Government. He has received numerous prize awards at various important exhibitions of art, and is a member of The National Arts Club and The Lotos Club, New York, a member of The National Academy of Design, and a member of The Salamagundi Club, The Allied Artists of America, The New York Water Color Club, The American Water Color Society, The Painter Gravers of America, The Brooklyn Society of Etchers, The Century Club, The Architectural League, The National Institute of Arts and Letters, New York, The Aquarellists Society, the Artists Fund Society, and The American Art Association, Paris. He studied Art at The School of Drawing and Painting connected with The Boston Museum of Fine Arts, and at The Academy Julian, Paris, under Jules Le Febvre and Tony Robert Fleury.

Mr. Browne was decorated by the French government in 1925 and is an officer of Public Instruction and Fine Arts, France.

THE CLIMATE of Provincetown is ideal for a summer outing, the location of the town on the extreme point of the Cape giving it the benefit of sea breezes from all directions, and making it free from periods of debilitating heat, common to places less fortunately situated.

There is no finer sea bathing on the Atlantic Coast, as the water is never cold, and with the long stretches of clean, white sand, bathing becomes an exhilarating and enjoyable element in the life of this interesting summer colony.

For the lovers of fishing, boating and all summer sports and forms of recreation, Provincetown is unsurpassed. There is a good golf course about eight miles from town, easily reached by train or by automobile.

THE TRIP TO PROVINCETOWN

HOW TO GET THERE

PROVINCETOWN may be reached from New York by the New York, New Haven and Hartford Railroad, Grand Central Station. Or by the Fall River Line boats, leaving New York at five p.m. and arriving at Fall River at seven a.m., where passengers will find a train waiting on the dock for the trip down the Cape. Provincetown is reached at twelve-thirty. From Boston one may journey all the way to Provincetown by rail, or may take the delightful sail down Boston Harbor and across Cape Cod Bay, on the steamer "Dorothy Bradford," which leaves Atlantic Avenue, daily at nine a.m., arriving at Provincetown at one-thirty p.m. The steamer season begins about June fifteenth.

ACCOMODATIONS

BOARD AND ROOM may be had from Ten to Twelve Dollars per week and upwards, and students may find accommodations for light housekeeping at a very moderate rate. Cottages and bungalows may be rented, furnished for the season. Furnished Rooms from Five Dollars up per week.

LIST OF HOTELS and BOARDING HOUSES

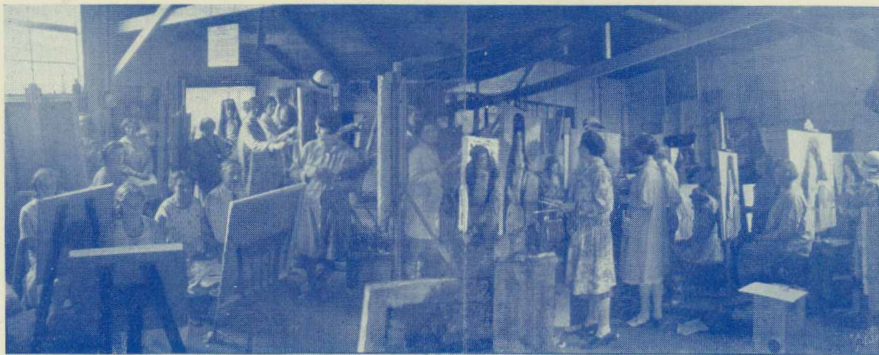
Gifford House
New Central House

Pilgrim House
Atlantic House

Provincetown Inn
The Red Inn

THERE ARE a number of excellent Boarding Houses. We will gladly recommend on application.

FOR FURTHER INFORMATION regarding addresses at Hotels, Boarding Houses and Cottages, write to The Browne Art Class, West End School of Art, P.O. Box 453, Provincetown, Mass.



THE BROWNE ART CLASS

WEST END
SCHOOL OF ART

PROVINCETOWN, MASS.

Instructor

George Elmer Browne, N. A.

Assistant Instructor

Miss Mildred C. Green

SEASON OF 1932

THE STUDIO

Housed in a greatly enlarged and improved Studio, the Browne Art Class will begin its fifteenth season in Drawing and Painting at Provincetown, Massachusetts.

This splendid large studio, is fully equipped with easels and chairs, has a most excellent unobstructed north light, and is so arranged that models can be posed either in the studio itself or out of doors, in the latter case while the model may be posed in the open air the class will be working under cover, it is the only class studio so constructed in the town.

The studio is situated in a grove of shade trees, which tends to make it a cool and agreeable place in which to work.

THE CLASSES

Instruction for both men and women in Drawing and in Painting, from Nature, Landscape, Figure, Marine and in Composition and Portraiture. Special instruction will be given in the handling of Water Color pigment, as well as in Oil, the Technique of Color, and a thorough course in Artistic Anatomy and in Perspective.

A Regular Model will be engaged to pose before the Class both for the figure and in costume.

STILL LIFE

THOSE wishing to work from still life, will find a collection of objects in the studio, such as antique brasses and coppers, porcelains, draperies, etc.

CRITICISM

TUESDAY AND SATURDAY

MR. BROWNE will criticise the work of each student individually on Tuesdays and Thursdays of each week. Students will be instructed in design, in color relations, and in the essentials of composition—how to compose a picture from sketches. Special attention will be given to those working from the model, and in the study of portraiture and in the arrangement of figure composition.

INSTRUCTION will also be given in the technique of Oil and Water Color painting, the handling of the color pigments.

ON SATURDAY FORENOONS a general criticism will be given by Mr. Browne of all the work that has been done during the week. All work will be placed on a large screen, and the students will thus have the opportunity of comparing their work with that of others in the class.

MR. BROWNE WILL PAINT before the Class on certain days during the course.

TERMS

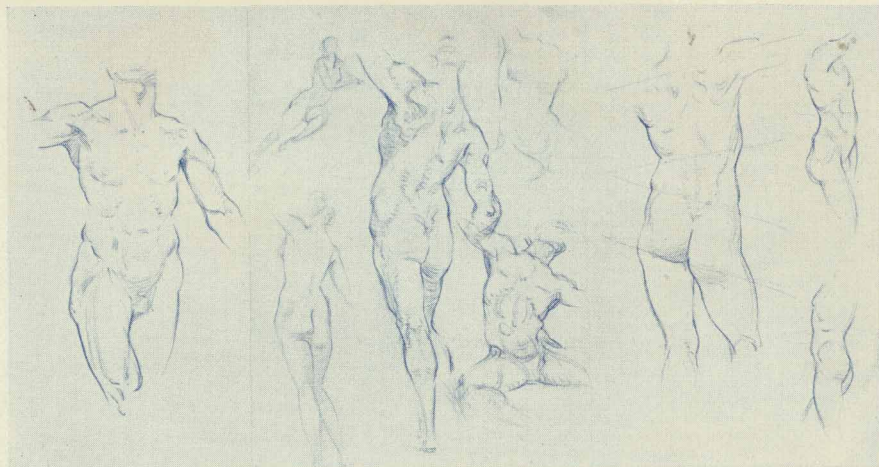
TUITION is payable in advance, the rates being sixty dollars for eight weeks or thirty-five dollars for four weeks, for study in both morning or afternoon classes. A student may begin at any time, but no student will be received for less than one month. Single criticisms are five dollars each.

ART MATERIALS

ARTISTS' MATERIALS and supplies can be purchased in the town at regular city prices.

ART EXHIBITION

THE PROVINCETOWN ART ASSOCIATION holds annually, during the summer months, an interesting exhibition of paintings by members of the art colony.



Drawings in artistic anatomy

Assistant Instructor
Miss Mildred C. Green

The Browne Art Class has secured this season the services of Miss Mildred C. Green of Buffalo, N. Y. an artist and instructor of distinction and reputation.

Miss Greene is Instructor of Life Drawing and Painting at the Fine Art School of the Albright Gallery, Buffalo, N. Y. She will herself work in the Class, painting from the model, and will assist those who feel that they need extra instruction. She will lay special stress on the construction of the figure, and her talks and demonstration on the study of artistic anatomy will be found most valuable.

PROVINCETOWN

THE SOUTHEASTERLY PART of Massachusetts stretches a great sandy arm out into the blue Atlantic, and forms what is known as Cape Cod. At its very end lies Provincetown, the first landing place of the Pilgrims. It was in the wide and land-locked harbor of Provincetown that the historic Mayflower first dropped anchor.

ABOUNDING IN HISTORIC INTEREST, Provincetown, with its quaint old streets, its picturesque houses and crumbling wharves, is a reminder of a once prosperous sea-faring life. The splendid harbor, surrounded by its glistening belt of sand dunes, the groups of yachts and fishing craft, the wooded dunes back of the town, the great shade trees hanging over the narrow streets, the fisher life, and the picturesque Portuguese fisher folk, go to make this one of the most paintable spots in America.

THE OLD TOWN stretches along the water's edge for over three miles, from East to West, and although one will find much to sketch and paint in every section of this painters' Mecca, there is no more picturesque section than that part of the town known as the West End—here the characteristic quaintness and beauty of the town seem to have escaped the march of progress, and the old wharves and houses remain as they did when Provincetown was in its prime. It is from this section of the town that The West End School of Art takes its name.